



BENTLEY

Bentayga Range



CO₂ Emissions and fuel consumption data for EU27 is pending, subject to EU Type Approval.

Bentayga Range: Contents

The Bentayga range 03

- The Bentayga range 04
- Four exquisite models 05
- Bentayga 06
- Bentayga Azure 07
- Bentayga Speed 08

Design 09

- The big picture 10
- Exquisite details 11
- Design: Bentayga 12
- Design: Bentayga Azure 13
- Design: Bentayga Speed 14

Interior 15

- A space like no other 16
- A new standard for comfort 17
- A breath of fresh air 18
- Bentley Diamond Illumination 19
- Digital details 20
- Interior: Bentayga 21
- Interior: Bentayga Azure 22
- Interior: Bentayga Speed 23

Technology 24

- Intuitive technology 25
- Effortless manoeuvres 26
- Embrace the open road 27
- Connect to more 28
- Wireless by design 29
- Incredible audio systems 30
- Charging and driving your hybrid 31
- Rear Seat Entertainment 32

Performance 33

- The ultimate drive 34
- The V8 petrol engine 35
- The V6 hybrid powertrain 36
- Bentley Dynamic Ride and all-wheel steering 37
- Sports exhaust 38
- Driving beyond the road 39
- Choose your mode 40
- Towing and storage 41

Personalisation 42

- Express yourself 43
- Exterior colours 44
- Wheels and brake callipers 45
- Veneers 48
- Hide colours 50
- Bespoke commissioning with Mulliner 52
- Styling and Blackline Specifications 53
- Specification packages 54
- Accessories, servicing and maintenance 55
- Financing your Bentayga 56
- The Bentley Collection 57
- The Bentley Experience 58

Legend (for above icons)

-  BentleyMotors.com
-  Configure your Bentley
-  Find a Retailer
-  Request test drive

Specifications + Options . . . 59

- Bentayga 60
- Bentayga Azure 62
- Bentayga Speed 62
- Hybrid powertrain 63
- V8 engine 64
- Performance-tuned V8 engine 65
- Tyre applicability 66



THE BENTAYGA RANGE



The Bentayga range

A showcase of Bentley's latest automotive technology, the Bentayga fuses luxury and performance to inspire exploration without limits. Modern, distinctive and commanding, it unites cutting-edge design and innovation, resulting in an unsurpassed driving experience.

The Bentayga range includes a choice of three powertrains: a serene, efficient V6 hybrid, a muscular V8 petrol engine or, if you opt for the Bentayga Speed, a higher-powered, performance-tuned version of the V8. Whichever you choose, you will enjoy the same unique combination of all-road performance, unrivalled ride comfort and incomparable on-road handling that you expect from a Bentley SUV.

The Bentayga has the power to take you and your passengers wherever you want to go, from the city to the open road and beyond. So what are you waiting for?

Bentayga Azure (V8) WLTP drive cycle: fuel consumption, mpg (l/100 km) – Combined 22.1 (13). Combined CO₂ – 296 g/km.



Three exquisite models

Incredibly powerful, exquisitely luxurious and packed with the latest lifestyle-enhancing technology, the Bentayga can be commissioned in your choice of three stunning models.




Bentayga

Luxury, performance, practicality and go-anywhere capability in perfect balance.

V8 or V6 hybrid.

DISCOVER



Bentayga Azure

Craft and technology come together to maximise the wellbeing of you and your passengers.

V8 or V6 hybrid.

DISCOVER



Bentayga Speed

Sporting luxury meets exhilarating performance in the most powerful Bentayga ever built.

High-powered V8.

DISCOVER

Bentayga (V8) WLTP drive cycle: fuel consumption, mpg (l/100 km) – Combined 22.1 (13). Combined CO₂ – 296 g/km.



Bentayga

The Bentayga model represents a unique balance of luxurious craftsmanship, exhilarating performance and all-round versatility.

Featuring a chrome surround and centre bar, its black matrix grille sits between two cut crystal-style LED matrix headlamps. A gleaming wing vent, sleek sills and eye-catching 21" wheels ensure it turns heads as it drives past, while jewelled 3D tail-lamps can be seen on the sculpted tailgate.

Inside, meanwhile, natural hides and veneers come together with intricate detailing, in a cabin that can be configured with a choice of three seating options: four seats, five seats, or a 4+1 configuration. So wherever you need to go and whoever you need to take with you, there is no vehicle better equipped to make every journey a joy.

TO DESIGN

Please refer to Specifications and Options pages for standard and optional features. Not all options are available on all models and within all markets.





Bentayga Azure

The Bentayga Azure elevates the SUV experience even further, with a remarkable array of features designed to boost the comfort and wellbeing of everyone on board.

The Harmony Diamond Quilt stitching pattern, for example, adorns the insides of the doors and selected sections of the seats. Sustainable features include open pore veneers, carpets made entirely from recycled nylon and overmats made with 100% wool. Subtle additions such as mood lighting and a duo-tone heated steering wheel, make the cabin feel truly complete.

This is a vehicle in which artisan craft comes together with the latest innovations, from groundbreaking seating technology to options that include the stunning Animated Welcome Lights by Mulliner. In short, the Bentayga Azure is an incredible demonstration of what a Bentley can be.

TO DESIGN

Please refer to Specifications and Options pages for standard and optional features. Not all options are available on all models and within all markets.





Bentayga Speed

The new Bentayga Speed is the most powerful Bentayga ever built. An exclusively performance-tuned 4.0 litre V8 engine delivers an unprecedented 850 Nm (627 lb ft) of torque and 650 PS (641 bhp). With chassis technology including a more engaging Electronic Stability Control system, it offers a truly unrivalled SUV driving experience.

You can expect a unique showcase of sporting luxury, design and craftsmanship – from the dark tint exterior detailing to the Precision Diamond Quilt upholstery inside. Unique optional features include a sleek black roof and stunning new 23" wheels – the largest ever made by Bentley – in a choice of three eye-catching finishes.

A magnificent fusion of power, style and unmatched attention to detail, the new Bentayga Speed is an SUV unlike any other.

TO DESIGN

Available with V8 engine only. Please refer to Specifications and Options pages for standard and optional features. Not all options are available on all models and within all markets.





DESIGN

The big picture

A supreme example of Bentley's design language, the Bentayga is a sight to behold.

From the beautifully crafted grille of each model to the large intakes and sculpted surfaces of the bold lower bumper design, this is a vehicle that makes its presence felt, wherever it goes.

The roof spoiler adds a sleek flourish to the car's profile, as does the 'power line' that runs from the headlamps to the rear haunch – long an important hallmark of Bentley's visual style. Fender vents draw the eye, complementing the lower door mouldings and imposing wheels.

At the rear, jewel-like elliptical tail lamps are set into the tailgate panel, which also features a prominent 'Bentley' badge. Echoing the design of the rear lamps, the bold bumper features oval-shaped split tailpipes.

Please refer to Specifications and Options pages for standard and optional features. Not all options are available on all models and within all markets.





Exquisite details

The Bentayga is designed to excite at first sight. Yet the closer you look, the more you see.

Echoing the oval shape of the exquisitely jewelled rear lamps, for example, are the oval-shaped split tailpipes. At the front, the three-dimensional interior edges of the LED matrix-beam headlamps evoke a cut-crystal effect. The intricate detailing on the chrome fender vents, meanwhile, has been crafted to gleam brightly in the sunlight, turning onlooker's heads as you drive by.

On entry, you will step over treadplates inscribed with the words, 'Handcrafted in Crewe, England'. You can choose from a wealth of options to enhance your Bentayga even further, including the incredible Animated Welcome Lamps by Mulliner, which project a beautiful swirling light show onto the ground as you open the door. Consider it one more example of the unrivalled attention to detail that makes the Bentayga unique.

Please refer to Specifications and Options pages for standard and optional features. Not all options are available on all models and within all markets.



Design: Bentayga

Unique to the Bentayga model is a black matrix grille with a chrome surround and centre bar. Bold 21" wheels give the model a strong, imposing stance, countered by the intricate details of the cut crystal-style headlamps and jewelled 3D tail-lamps. This is a vehicle designed specifically to catch the eye, wherever you drive it.

TO INTERIOR

Please refer to Specifications and Options pages for standard and optional features. Not all options are available on all models and within all markets.



Design: Bentayga Azure

The exterior of the Bentayga Azure exudes an effortless elegance, from the polished chrome, vertical-vaned front grille to the polished 'Azure' badges. The wheels are available in a variety of designs and finishes, in both 21" and 22" sizes, including a stunning Pale Brodgar Satin painted 22" five-spoke option. Illuminated treadplates light your way as you step inside, where a cabin like no other awaits.

TO INTERIOR

Please refer to Specifications and Options pages for standard and optional features. Not all options are available on all models and within all markets.



Design: Bentayga Speed

Designed to stop onlookers in their tracks, the Bentayga Speed features dark tint detailing across its sleek exterior, from the imposing matrix grille at the front to the large oval tailpipes at the rear.

22" Speed wheels are fitted as standard, with new 23" wheels – the biggest on any Bentley – available as an option, in grey satin, black gloss or a black painted and bright machined finish. All three look incredible, especially when paired with one of the eye-catching new brake calliper colours.

Magnificent examples of sports styling abound, including dark tint headlamps, a black rear diffuser, a body-coloured Styling Specification, an optional black roof and grey lenses in the tail lamps. And when you open the door, the Illuminated Welcome Lamps project a striking light show onto the ground at your feet.

[TO INTERIOR](#)

Please refer to Specifications and Options pages for standard and optional features. Not all options are available on all models and within all markets.



INTERIOR



A space like no other

Light floods in from above to illuminate a truly luxurious interior, courtesy of the tilt and slide panoramic roof. Beneath it, the famous Bentley wings marque has once again inspired the architecture of the cockpit. Clad in your choice of handcrafted veneers, the centre console flows upwards via the 10.9" central touchscreen into a fascia that reaches out to the doors, emphasising the cabin's generous width.

But space and light are not the only things that influence comfort. Technology has a role to play too – as it does in the seats, the lighting and even the air conditioning system. Air ionisers in both the front and rear reduce the number of harmful airborne particles, while an enhanced air conditioning system monitors and optimises interior air quality. It's all part of a truly holistic approach to driver and passenger wellbeing.

Please refer to Specifications and Options pages for standard and optional features. Not all options are available on all models and within all markets.



A new standard for comfort

The luxurious Front Seat Comfort Specification is included with the Bentayga Azure. It offers a six-setting massage function and 20 different types of adjustments, including headrests, cushions and backrest bolsters, to offer both driver and passengers a truly indulgent and relaxing experience. It also includes Seat Auto Climate, which monitors the humidity and temperature at the surface of each front seat and uses a combination of heating and ventilation to respond automatically, keeping you comfortable at all times. And it includes Postural Adjust, which uses a series of air cushions inside each front seat to vary the pressure on your muscles throughout your journey. Although the effect is imperceptible on the lowest settings, it reduces fatigue significantly, especially when you are in the vehicle for a long time.

If you choose the Five Seat Comfort Specification, Seat Auto Climate and Postural Adjust are available in the front seats. These features become available in the rear as well if you choose the Four Seat Comfort Specification or the new 4+1 Comfort Specification.

The 4+1 Comfort Specification enables you to seat three people in the rear when necessary, without compromising on the comfort available in the two main rear seats. It features a third seat between them, which houses a ski hatch for stowing long loads in the boot. It can also be folded down to form a central armrest, with USB chargers, cup holders and additional stowage space.

Please refer to Specifications and Options pages for standard and optional features. Not all options are available on all models and within all markets.

A breath of fresh air

The Bentayga features an intelligent air conditioning system, designed to improve cabin air quality and reduce the number of PM2.5 particles to which you and your passengers are exposed.

The system constantly monitors the atmosphere, both inside and outside the cabin, then filters out the pollutants. The interior and exterior readings can be seen at any time on the 'Air Quality' panel on the central touchscreen. It also models the CO₂ concentration in your car. Provided levels are judged to be low outside the vehicle, clean fresh air is drawn in. If not, the air inside will be recirculated instead.

The system can even detect tunnels as you approach, switching to recirculation mode before you enter, to avoid air pollution inside the tunnel being drawn inside. The moment you exit the tunnel, the system switches back, drawing in fresh air from outside once again. To save energy, it can even detect whether anyone is sitting in the rear seats. If not, performance in the back of the cabin is automatically reduced.

Please refer to Specifications and Options pages for standard and optional features. Not all options are available on all models and within all markets.



Bentley Diamond Illumination

Controlled from the main infotainment panel or the Touch Screen Remote, Bentley Diamond Illumination allows a series of LEDs built into the upholstery to shine through tiny perforations in the leather, to stunning effect – especially when travelling at night. With varying degrees of intensity and 30 different colours to choose from, it can be synchronised with the cabin's mood lighting or adjusted independently.

Please refer to Specifications and Options pages for standard and optional features. Not all options are available on all models and within all markets.

Digital details.

The digital driver's information panel behind the steering wheel can be displayed with a choice of different graphic design schemes to match your taste, with three options on the Bentayga model and four on all others. They include designs that reflect the character of the car you choose, be it performance or comfort-focused.

Please refer to Specifications and Options pages for standard and optional features. Not all options are available on all models and within all markets.



Interior: Bentayga

The handcrafted cabin of the Bentayga sets the standard for modern luxury SUVs. It is a showcase of Bentley interior design, where the latest automotive technology meets traditional craftsmanship and sustainable materials, such as the recycled Nylon used for the carpets.

The cabin itself can be configured with four seats, five seats, or a 4+1 Comfort Specification, which combines two full-featured individual rear seats with the option to deploy a third rear-seat between them. So wherever you need to go and whoever you need to take with you, the Bentayga makes every journey a joy.

SPECIFICATIONS AND OPTIONS

Please refer to Specifications and Options pages for standard and optional features. Not all options are available on all models and within all markets.





Interior: Bentayga Azure

Illuminated treadplates invite you to step inside the Bentayga Azure, where the beautiful Harmony Diamond Quilt features throughout. Mood lighting enhances the unique ambience even further.

The Front Seat Comfort Specification includes both Postural Adjust and Seat Auto Climate – and with ventilation, six massage programmes and a wide range of electrical seat adjustments, you can expect unprecedented levels of comfort.

‘Azure’ emblems can be seen on the seats and fascia, while the duo-tone heated steering wheel and gear lever feature leather trim. The Colour Specification gives you a choice of fifteen hide colours, so you can create a cabin you won’t want to leave.

SPECIFICATIONS AND OPTIONS

Please refer to Specifications and Options pages for standard and optional features. Not all options are available on all models and within all markets.





Interior: Bentayga Speed

Stepping over the illuminated Speed treadplates, you will enter a cabin upholstered in your choice of hide colours, featuring a contemporary Precision Diamond Quilt pattern created specifically for Bentley's Speed models.

A new, exclusive Speed colour layout combines your choice of primary hide colour with selected areas of the cabin clad in tactile Dinamica, while the optional Dark Chrome Interior Specification gives prominent areas of the interior a darker tint. The 'Speed' emblem, meanwhile, is prominently visible on the fascia and on the seats.

You can toggle between numerous styles for the graphics in the driver's information panel, including an option designed specifically for this model. It's just another example of the attention to detail on display in the Bentayga Speed.

SPECIFICATIONS AND OPTIONS

Please refer to Specifications and Options pages for standard and optional features. Not all options are available on all models and within all markets.



TECHNOLOGY

Intuitive technology

Every Bentley is equipped with the latest driver assistance technology, alongside a suite of Connected Car services, accessible both in-car and remotely, via the My Bentley app. The vehicle can harness infrastructure data to deliver services including real-time traffic information, green traffic light prediction and swarm services from other road users to warn you of potential hazards.

Inside, you can now use the new My Bentley App Studio to download your personal choice of applications – which means you don't have to worry about your phone battery draining while you use it for music or navigation, for example. And if you do choose to use a third party navigation app, it will have access to your vehicle's fuel and/or charge levels, for more accurate journey planning.

You can even assign certain frequently-used functions – for example switching navigation announcements on or off – to a custom switch on the steering wheel, for easier access while driving.

Please refer to Specifications and Options pages for standard and optional features. Not all options are available on all models and within all markets.

Effortless manoeuvres

A suite of driver assistance systems makes the Bentayga easier to drive than ever – especially when parking and manoeuvring at low speeds.

Parking made even easier

The Intelligent Park Assist* function can identify a suitable parking space, then take control of the steering, pedals and gears while it parks your Bentayga. And for occasions when the space is so tight that it would be hard to get in or out of the vehicle once parked, you can use My Bentley Remote Park Assist*, a feature accessed via the My Bentley smartphone app. Simply step out of the car before it parks and tap the button in the app that activates remote parking. Then hold the button down until your Bentayga has safely parked itself. Your car will stop moving straight away if you stop holding the button for any reason. When you return to your car, you can also use Remote Park Assist* to drive it out of the parking space, so you can comfortably get back in.

Assistance when you need it most

When manoeuvring in extremely tight spots or crowded locations, 3D Surround View allows you to choose the best view available from the four different cameras on the car or, alternatively, see a 3D view of the overall environment around the vehicle.

Manoeuvre Assist provides an extra layer of safety for you and your car, by monitoring the environment in hard-to-navigate spaces and braking automatically if your Bentayga looks likely to collide with anything.

Trailer Assist*

Reversing can become a little more difficult when you have a trailer in tow, which is why you can now commission a Bentayga with Trailer Assist*. As soon as you put the car into reverse, the view from the rear camera is projected on the main infotainment screen. You then tell the car where you want your trailer to go, using the Drive Dynamics Control rotary knob on the front console. Then all that remains is to let go of the steering wheel and let your Bentayga do the rest.

*The driver must constantly supervise the manoeuvre and be able to intervene at any time to maintain safety. Please refer to Specifications and Options pages for standard and optional features. Not all options are available on all models and within all markets.

Embrace the open road

Every Bentayga is equipped with a number of driving assistance features that make driving long distances more comfortable, such as Adaptive Cruise Control, Lane Departure Warning and matrix headlamps with High Beam Assist. The optional Touring Specification (standard on the Azure model) provides even more intuitive assistance for long-distance touring.

More comfortable cruising

The specification includes Adaptive Cruise Control with Lane Guidance, which enables you to take your feet off the pedals when driving on the highway. As long as you keep your hands on the wheel, it will ensure you stay in the centre of your lane and maintain a safe gap between your Bentayga and the car in front – even if traffic slows to a stop and starts again.

Going beyond the highway

Predictive Adaptive Cruise Control takes these functions further, by offering the same convenience when you leave the highway. Using data from the

navigation system, the front camera and the Traffic Sign Recognition system, it can continue to safely control your speed, accelerating or braking as necessary to account for speed limit changes, bends in the road, junctions and roundabouts.

Safer driving at night

The night vision camera makes driving in darkness safer – especially in situations where obstacles could be present outside or beyond the headlamp beams. The view from the camera is shown on the driver's information display, highlighting the presence of people or animals in your car's path.

Key information at eye-level

The Touring Specification also includes a Head-Up Display, which projects key driving information into your line of sight, so you never need to take your eyes away from the road.

Please refer to Specifications and Options pages for standard and optional features. Not all options are available on all models and within all markets.



Connect to more

Every Bentayga is equipped with a wide range of Connected Car services*, accessed in-car or remotely via the My Bentley app.

Seamless integration

You can input a destination into the navigation system via the My Bentley smartphone app when you're away from your car, so you're ready to go the moment you get behind the wheel. Real-time traffic information can then dynamically re-route your journey if there is congestion, while Green Traffic Light Prediction will aid smooth passage through junctions.

Your choice of apps

With the new My Bentley App Studio, you can opt to download and use many third party apps for navigation, music, video and more, all within the Bentley infotainment system, accessed via the central touchscreen. This means you can use your preferred navigation system, for example, complete with integrated information from your vehicle, such as fuel and/or charge levels.

A personal experience

In the majority of markets*, your Bentayga is connected to the cloud, enabling all your personal settings to be stored remotely and accessed by the car as required. This means that even if you move between compatible Bentleys or to a new one, all navigation system destinations, light settings, seat settings and even your favourite radio stations can be downloaded immediately, making them available from the moment you get in.

A warm welcome

You can use the My Bentley app to remotely check the status of your locks, lights, mileage and fuel. If you have a hybrid model, you can also check your EV range. Hybrid models also allow you to remotely pre-heat or pre-cool the cabin with My Cabin Comfort. Just select your desired temperature and let the car's climate control system do the rest. You can also opt to heat individual seats, armrests and the steering wheel. You can even defrost the windows remotely, before your journey begins.

Leading the charge

Other hybrid features include E-charging, which allows you to plug your car into a charger and activate the charging process remotely via the app. Just enter the time you plan to set off, and the charging system calculates a charge rate that will give you the highest possible level of charge, just in time for your departure.

You're in safe hands

Emergency features include Private eCall and Roadside Assistance, which automatically connect you to a Bentley Emergency Call Centre or the Bentley Roadside Assistance team in the event of an accident. Furthermore, Theft Alert will notify you if the alarm is activated, giving you complete peace of mind.



Please refer to Specifications and Options pages for standard and optional features. Not all options are available on all models and within all markets.
*Vehicle connectivity and service availability varies by market. Please confirm specification with your local certified Bentley Retailer.
** With additional data plan purchased through a mobile network operator.
Android is a trademark of Google LLC.
Apple CarPlay is a registered trademark of Apple Inc.



Wireless by design

Internet connectivity is available for all occupants throughout, thanks to a built-in Wi-Fi hotspot.*

Content on your phone can be accessed in your car wirelessly, through Android™ Auto or Apple CarPlay. Phone content is shown on the section of the screen furthest from the driver, so no driving information is obscured. Online natural speech interaction, meanwhile, lets you activate over 200 car functions by voice, so your hands needn't leave the wheel.

Wireless phone charging is integrated in the stowage area forward of the gear lever, while the Touch Screen Remote, a wireless tablet included with every Bentayga, enables rear-seat passengers to control features including seat massage, heating and ventilation, climate control and sound.

*With additional data plan purchased through a mobile network operator. Please refer to Specifications and Options pages for standard and optional features. Not all options are available on all models and within all markets.



Incredible audio systems

Every Bentayga can be commissioned with your choice of three audio systems. The Bentley system offers exceptional sound, while audiophiles can upgrade to either the visually striking Bang & Olufsen for Bentley, complete with its stunning illuminated speaker grilles, or Naim for Bentley, for truly unrivalled sound quality.

If you choose to stream your music through either the Tidal or Amazon Music apps that are included in the My Bentley Apps Studio, you will enjoy your music with Dolby Atmos, providing an unrivalled, immersive experience.



Rear Seat Entertainment

For the ultimate in passenger entertainment, choose the optional Bentley Rear Entertainment System. Two 10.1" screens sit behind the front seat headrests providing access to a world of online content. Netflix comes pre-installed, while other streaming apps can also be used, via your passengers' mobile devices.

The sound can be enjoyed as an immersive experience through the supplied Bluetooth headphones, your passenger's own headset or earbuds, or even the speakers of the car's audio system.

Please refer to Specifications and Options pages for standard and optional features. Not all options are available on all models and within all markets.

Charging and driving your hybrid

Vehicles equipped with the hybrid powertrain benefit from a number of additional features to enhance your driving experience.

There are three driving modes. The all-electric EV Drive mode is optimised for short journeys and city driving, while Hold is designed to preserve battery charge. In Hybrid mode, the intelligent navigation system maximises range and efficiency from the outset by choosing the most appropriate power source for each stage of your journey. If your route takes you through a city with an electric-only zone, it will even account for this in its planning, making sure the battery keeps enough power in reserve during the earlier stages of your journey.

Back at home, the Bentley charging dock enables you to recharge your Bentayga between drives, with two programmable timers, helping you plan

ahead. A convenient charging time of two hours 40 minutes* can be achieved when using an industrial socket, while domestic sockets yield a full charge time of just six hours 35 minutes*. Charging cables for both types of connection are supplied, and the charging process can be controlled via your smartphone or the onboard charging point.

Accessed via the My Bentley app, the My Battery Charge feature allows you to start charging, while the E-Charging service helps you find nearby charging stations, however far you've travelled from home.

CO₂ Emissions and fuel consumption data for EU27 is pending, subject to EU Type Approval.

*Charging times for EU/UK markets. Figures will vary by country. Please refer to Specifications and Options pages for standard and optional features. Not all options are available on all models and within all markets.





PERFORMANCE



The ultimate SUV

You can choose from a 3.0 litre V6 hybrid powertrain, a 4.0 litre V8 petrol engine or, if you choose the Bentayga Speed, a high-powered V8 that makes it the fastest Bentayga ever. Whichever option you select, you can expect the driving characteristics that made Bentley famous: phenomenal torque for smooth, surging acceleration that feels like it will never end.

The 8-speed transmission ensures optimum gear selection and irresistible acceleration throughout, while an advanced Torsen All-Wheel Drive (AWD) system delivers constant power to all four wheels, for confident driving, whatever the conditions.

Yet this is a sport utility vehicle, after all – and that means more than just exhilaration. The Bentayga is built to take you anywhere, whatever you need to take with you. It can perform perfectly at lateral and longitudinal angles of up to 35°, for example, and at wading depths of up to 500 mm. It's all part of what makes the Bentayga the ultimate SUV.

Two V8 petrol engines

V8

Available in the Bentayga and Bentayga Azure, the standard Bentayga V8 engine puts 550 PS (542 bhp) at your disposal. It can propel you from 0 to 60 mph in just 4.4 seconds (0 to 100 km/h in 4.5 seconds) and on to a top speed of 180 mph (290 km/h)*.

0 to 60 mph

4.4seconds (0 to 100 km/h: 4.5 seconds)

Top Speed

180 mph (290 km/h)*

Power

550 PS (542 bhp)

Torque

770 Nm (568 lb ft)

High-powered V8

Exclusive to the Bentayga Speed, this high-powered V8 engine delivers a full 650 PS (641 bhp). That's enough to take you from 0 to 60 mph in just 3.4 seconds (0 to 100 km/h in 3.6 seconds), with a maximum speed of 193 mph (310 km/h)*.

0 to 60 mph

3.4seconds (0 to 100 km/h: 3.6 seconds)

Top Speed

193 mph (310 km/h)*

Power

650 PS (641 bhp)

Torque

850 Nm (627 lb ft)



*With carbon ceramic brakes fitted.

The V6 hybrid powertrain

The plug-in hybrid powertrain combines the power you expect from a Bentley with even lower emissions and the potential to drive in electric-only mode, for a serene experience in city streets.

An electric motor works in partnership with a 335 bhp, 3.0 litre V6 petrol engine to deliver 462 PS (456 bhp) in total and 700 Nm (516 lb/ft) of combined torque. This allows you to reach 60 mph in just 5.1 seconds (0 to 100 km/h in 5.3 seconds), before surging on to a top speed of 158 mph (254 km/h).

0 to 60 mph

5.1 seconds (0 to 100 km/h: 5.3 seconds)

Top Speed

158 mph (254 km/h)

Power

462 PS (456 bhp)

Torque

700 Nm (516 lb ft)





Bentley Dynamic Ride and all-wheel steering

All V8 models are fitted with the 48-volt active roll control system known as Bentley Dynamic Ride*, which combines the handling of a sports car with the refinement of a luxury saloon. The system is installed alongside all-wheel steering, which shrinks the car's turning circle at low speeds and improves stability when changing lanes on the highway.

*Not available with hybrid engine. Please refer to Specifications and Options pages for standard and optional features. Not all options are available on all models and within all markets.

Sports exhaust options

If you choose the Bentayga Speed, you will benefit from a sports exhaust, featuring modifications to the muffler and the pipes themselves. Also available as an option on other V8 models, it boosts the volume of the exhaust note and enhances the unique V8 character, both inside and outside the cabin.

The Speed model is also available with an even more extrovert option. The titanium Akrapovic sports exhaust takes the sound of the car's high-performance engine to the extreme, unleashing a truly thrilling roar as you put your foot down.

Please refer to Specifications and Options pages for standard and optional features. Not all options are available on all models and within all markets.

Driving beyond the road

Available for V8 versions of the Bentayga and Bentayga Azure, the All-Terrain Specification* adds four additional Responsive Off-Road Settings, to deliver more drive modes than any other car. The 'Snow & Grass' setting provides grip on low friction surfaces, 'Dirt & Gravel' gives optimum traction on loose debris, 'Mud & Trail' configures the car's systems for muddy, uneven surfaces and 'Sand' gives greater confidence over dunes. And all the while, exhaustively tested underfloor protection ensures all key components are protected.

*Not available with hybrid engine. Please refer to Specifications and Options pages for standard and optional features. Not all options are available on all models and within all markets.

Choose your mode.

Every Bentayga gives you access to four different driving modes – Comfort, Bentley, Custom and Sport – which can be selected using a rotary dial.

While Comfort mode prioritises a smooth ride, the specially calibrated Bentley mode delivers the perfect balance of luxury and exhilaration. Custom mode lets you make your own adjustments to the engine, transmission and suspension and in effect, create your own mode. Sport mode, meanwhile, tailors these variables for a more dynamic drive.

If you choose the Bentayga Speed, you will benefit from an enhanced Sport mode, for the ultimate driving thrill. It adjusts the Bentley Dynamic Ride and Traction Control systems to boost responsiveness even further, while introducing torque vectoring by brake and an entirely new Electronic Stability Control calibration. Designed to appeal to serious drivers, it allows for even more control and confidence when cornering at speed, especially when driving on a track.

Please refer to Specifications and Options pages for standard and optional features. Not all options are available on all models and within all markets.

Towing and storage

There is more to the way an SUV performs than just the way it drives. Whether you are golfing or skiing, heading across continents or just across town, you need a vehicle that is practical as well as powerful.

That's why the Bentayga has been designed to accommodate a wide range of outdoor pursuits. From roof boxes and bicycle carrying racks to a range of tailored storage solutions for skiing, fishing, diving and other active pursuits, there is a huge range of accessories available. The spacious boot provides ample storage space, while the hands-free tailgate, easy-load boot function and load assist tray enable effortless opening, closing and loading.

If you choose either the Bentayga or Bentayga Azure with a V8 engine, you can tow up to 3.5 tonnes – more than ample for speedboats, gliders and horseboxes. The electrically retracting tow bar lies hidden behind the rear bumper when not in use. Even reversing with a trailer attached is made significantly easier, thanks to the Trailer Assist feature. See 'Effortless Manoeuvres' on page 26 to learn more.

Please note that these towing features are not available for the Bentayga Speed. Please refer to Specifications and Options pages for standard and optional features. Not all options are available on all models and within all markets.



PERSONALISATION



Express yourself

With a host of accessories and styling options allowing you to configure your Bentayga to your personal taste, it is highly unlikely you will ever see another one like yours.

You can choose from an extensive palette of exterior paint colours, all of which are designed to maintain their brilliance for many years to come. With numerous different wheel designs, hide options, beautiful natural veneers and distinctive trim options, almost every visible feature of your Bentayga can be customised to your own specification.

Exterior colours

There are seven standard exterior colours. In addition, you can also choose from an extended range and a palette of Mulliner paints that includes a vast range of solid, metallic, satin and pearlescent options. The new Mulliner Legacy range, meanwhile, makes a curated selection of heritage colours available once again.

For the ultimate in personalisation, Personal Commission Paint by Mulliner allows you to match a colour that is as unique as you are.

TO CONFIGURATOR

Please refer to Specifications and Options pages for standard and optional features. Not all options are available on all models and within all markets.



Wheels and brake callipers

There is a wide range of wheels on offer, including designs that are exclusive to the Bentayga Azure and Bentayga Speed – the latter including Bentley's first ever 23" wheel, available in grey satin, black paint or a combination of black paint and bright machined elements.

The entire wheel range has been carefully curated to offer a choice of finishes and styles. The painted finish is elegant and understated, while polished wheels gleam, accentuating the luxury characteristics of your Bentayga. Black painted wheels can evoke a sporty, stealthy aesthetic, while the combination of black and bright machined finishes gives wheels a stunning contrast.

For the ultimate statement, you can elevate your choice of wheels further with brake callipers painted in a range of stunning colours. All brake callipers are now available with both iron and carbon ceramic brakes.

[TO CONFIGURATOR](#)

Please refer to Specifications and Options pages for standard and optional features. Not all options are available on all models and within all markets.

Wheels



22" 5 spoke directional alloy wheel – painted



22" 5 spoke directional alloy wheel – black painted



22" 5 spoke directional alloy wheel – Pale Brodgar Satin



22" 10 spoke alloy wheel – painted



22" 10 spoke alloy wheel – black painted and bright machined



22" 10 spoke alloy wheel – polished



21" multi-spoke alloy wheel – silver painted



21" multi-spoke alloy wheel – black painted and bright machined



22" Speed alloy wheel – silver painted



22" Speed alloy wheel – dark tint



23" Speed alloy wheel – grey satin



23" Speed alloy wheel – black painted



23" Speed alloy wheel – black painted and bright machined

Brake callipers

All colours are available with both iron and carbon ceramic brakes.



Beluga



Pillar Box Red by Mulliner



Mandarin by Mulliner



Hyper Green by Mulliner



Ice by Mulliner



Signal Yellow by Mulliner



Klein Blue by Mulliner



Veneers

Wood veneers are sanded and lacquered five times, taking a full ten days to reach the Bentley standard of finish. Sustainably sourced from forests around the world, each leaf of veneer can be traced to the very tree it came from. The choice of wood species is detailed overleaf, including several open pore veneers and six gloss painted finishes: Imperial Blue, Cricket Ball, Burnt Oak, Gravity Grey, Piano Black and Piano Linen by Mulliner.

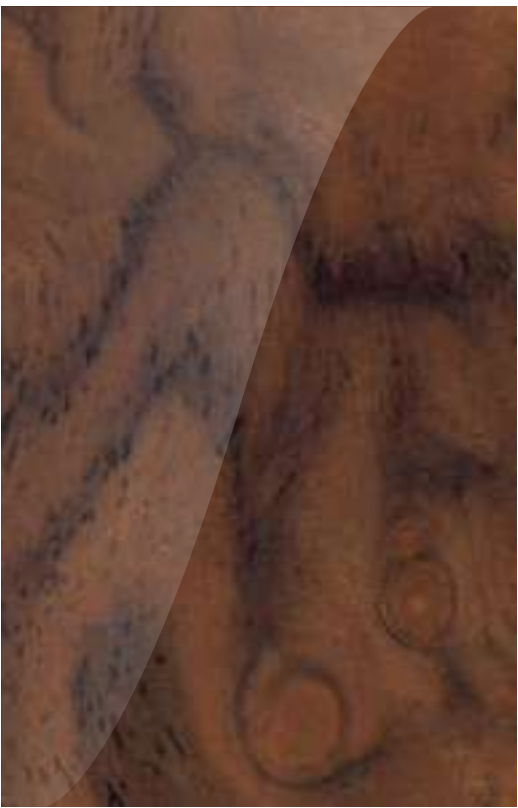
Eye-catching technical finishes include high-gloss Carbon Fibre and Dark Tint Diamond Brushed Aluminium, where each diamond shape is brushed in one of three directions for a textured, three-dimensional effect.

You can also opt for metal overlays in the veneer itself. This stunning, handcrafted finish adds an intricately designed layer of metal to the veneer during construction, which gleams as it catches the light. Less than 0.1 millimetre thick, these overlays sit virtually flush to the veneer’s surface.

TO CONFIGURATOR

Please refer to Specifications and Options pages for standard and optional features. Not all options are available on all models and within all markets.

Veneers



Burr Walnut
by Mulliner



Crown Cut Walnut



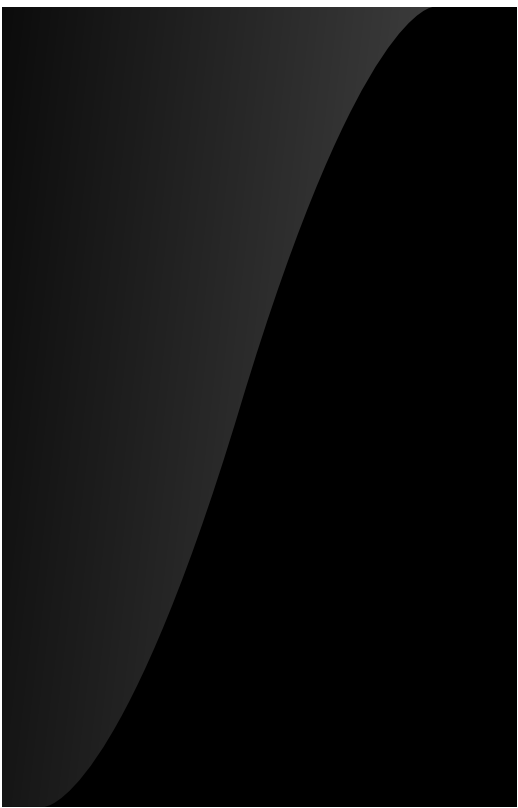
Dark Fiddleback
Eucalyptus



Dark Burr Walnut



Liquid Amber



Piano Black



Piano Linen by Mulliner*



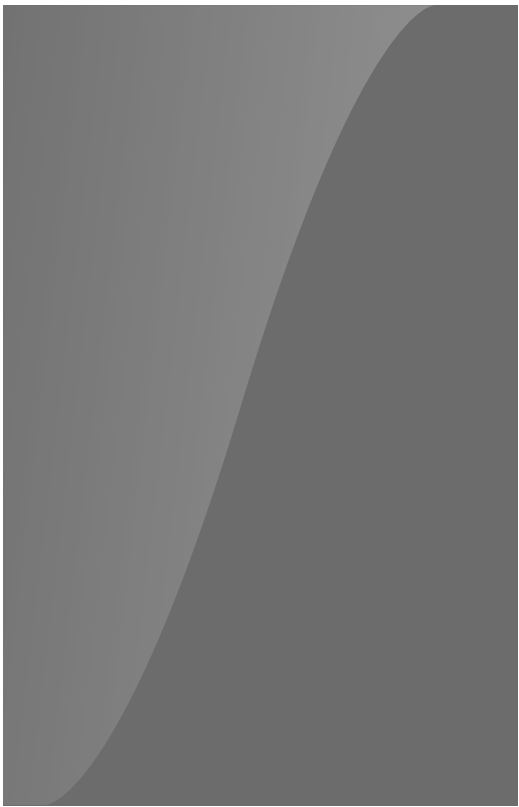
Piano Cricket Ball
by Mulliner



Piano Imperial Blue
by Mulliner



Piano Burnt Oak
by Mulliner



Piano Gravity Grey
by Mulliner



Open pore
Dark Burr Walnut



Open pore
Crown Cut Walnut



Open pore
Koa



Carbon Fibre



Diamond Brushed
Aluminium – Dark
Tint**

Please refer to Specifications and Options pages for standard and optional veneers.
*Applied to fascias and waistrails. Customer choice of veneer or technical finish down the centre line of the car.
**Applied to fascia and door waistrail. Piano Black to centre console and picnic tables (if selected).



Hide colours

From the fascia to the blind stitching, every inch of the cabin requires a specialised approach. Sections of the hide with high natural elasticity are reserved for curved surfaces like the seats, rather than for piping or flatter areas such as door inserts. The steering wheel, meanwhile, is covered in a highly resistant leather to ensure the natural chemicals from the driver's skin are not absorbed, optimising grip, comfort and longevity.

The Bentley design team have selected a wide range of leather colours. Add the Mulliner Colour Specification and you can choose from 12 accents for an additional burst of colour.

The Bentayga Azure and Bentayga Speed come with the exclusive Colour Specification included as standard, allowing you to choose any hide colour and colour combination in the range.

TO CONFIGURATOR

Please refer to Specifications and Options pages for standard and optional features. Not all options are available on all models and within all markets.

Azure

Hide colours



Burnt Oak



Damson



Cricket Ball



Hotspur



Saddle



Newmarket Tan



Camel



Magnolia



Linen



Portland



Gravity Grey



Brunel



Beluga



Cumbrian Green



Imperial Blue

Mulliner Colour Specification accent colours*



Pillar Box Red



Mandarin



Magenta



Cherry Blossom



White



Ice



Cyber Yellow



Signal Yellow



Hyper Green



Light Blue



Kingfisher



Klein Blue



Bespoke commissioning with Mulliner

In the early days of motoring, a new car would consist of an engine, drivetrain, four wheels and a set of controls – nothing more. Everything else was created by a coachbuilder, such as Mulliner.

Today, Mulliner works within Bentley to offer a variety of premium features and optional finishes, alongside bespoke customisation services.

For example, the team can colour-match any object you provide to create a unique paint colour. The same is true for your hides – any colour you can supply can be perfectly matched and made for you.

Further examples include personalised embroidery for your seats and exquisite marquetry inlays to your veneers. You can even work with them to design truly bespoke features for your car.

To learn more, visit the website or ask your Retailer about the Mulliner Personal Commissioning Guide.

Please refer to Specifications and Options pages for standard and optional features. Not all options are available on all models and within all markets.

Styling and Blackline Specifications.

The Styling Specification enhances the Bentayga exterior with a carbon fibre tailgate spoiler, front bumper splitter and side sills. If you choose to add the Styling Specification to the Bentayga Speed, you also have the option of adding a pinstripe in the same colour as your brake callipers.

The optional Blackline Specification replaces the standard exterior detailing – whether the bright chrome of the Bentayga and Bentayga Azure or the darker tint details on the Bentayga Speed – with fully black-painted components. It includes a black matrix grille and surround, black exhaust tailpipe trims, roof rails, window surrounds, wing vents, door trim, door handles and lamp bezels. Even the Bentley badges and wordmark turn black, for a significantly darker, more starkly defined appearance.

[TO CONFIGURATOR](#)

2023 model shown opposite. Please refer to Specifications and Options pages for standard and optional features. Not all options are available on all models and within all markets.





Specification Packages.

To make it even easier to specify your Bentayga, our engineers and designers have created groups of features, from technology packages that make driving easier to collections of exquisitely crafted styling enhancements that suit your lifestyle.

FRONT SEAT COMFORT SPECIFICATION

- 20-way movement for front seats
- Ventilation and massage
- Comfort headrests
- Postural Adjust
- Seat Auto Climate
- Electric front headrests

FIVE SEAT COMFORT SPECIFICATION

- Front Seat Comfort Specification
- Comfort headrests to rear outer seats
- Ventilation to outer seats

4+1 SEAT COMFORT SPECIFICATION

- Front Seat Comfort Specification
- Individual rear seats with 16-way movement
- Ventilation and massage
- Foldable centre armrest to create third seat
- Armrest includes storage, cupholders and x2 USB-C sockets
- Comfort headrests to rear outer seats
- Ski hatch

QUILTING SPECIFICATION

- Harmony Diamond Quilt to seats and doors (Azure)
- Precision Diamond Quilt to seats and doors (Speed)

FOUR SEAT COMFORT SPECIFICATION

- Front Seat Comfort Specification
- Individual rear seats with 16-way movement
- Ventilation and massage
- Centre console with storage and USB-C charging
- Comfort headrests to rear outer seats
- Ski hatch
- Seat Auto Climate and Postural Adjust
- Adjustable cushion and backrest bolsters
- Rolling nose
- Electric headrests

BENTLEY DIAMOND ILLUMINATION

- Illumination through perforation pattern in doors in up to 30 colours
- Mood lighting

BENTAYGA BLACKLINE SPECIFICATION

All exterior brightware changes from bright to black, including BENTLEY lettering and wing badges

BENTAYGA STYLING SPECIFICATION

- Carbon fibre tailgate spoiler, front bumper splitter and side sills
- Unique front and rear bumper design

BENTAYGA STYLING SPECIFICATION WITH ACCENT PINSTRIPE (SPEED ONLY)

COLOUR SPECIFICATION

- Choice of all interior colour combinations
- Extended choice of hide colours

LEATHER SPECIFICATION – UPPER CABIN

Headlining and upper trim changes from Dinamica to leather

LEATHER SPECIFICATION (SPEED)

- Seats and all cabin Dinamica changes to leather

BLACK DESIGN SPECIFICATION

- Blackline Specification
- 22" Five Spoke Directional Wheel – Black Painted
- Self levelling wheel badge by Mulliner
- Jewel oil & fuel filler caps
- Sports pedals
- Dark Interior Chrome Specification
- Mood lighting
- Black mirror caps
- Free choice of any coloured calliper
- Contrast stitching & seat piping
- Colour Specification
- Mulliner Colour Specification
- Free choice of any veneer / technical finish
- Contrast Gear Lever and Steering Wheel Spokes by Mulliner

BRIGHT CHROME SPECIFICATION (SPEED ONLY)

Changes all the exterior brightware apart from bumper grilles and main matrix grille to bright chrome

DARK INTERIOR CHROME SPECIFICATION (SPEED ONLY)

- Dark tint to bulls eyes, organ stops, and centre air vents

SPEED DYNAMIC SPECIFICATION

- 23" Speed Wheel and carbon ceramic brakes

MULLINER COLOUR SPECIFICATION

12 new colours available for

- Contrast steering wheel spokes and gear lever by Mulliner
- All stitching options
- Accent colour (main hide) - Speed only

TOURING SPECIFICATION

- Adaptive Cruise Control with Lane Guidance
- Predictive Adaptive Cruise Control
- Head-Up Display
- Night Vision

ALL TERRAIN SPECIFICATION

- Drive Dynamics Control
- Luggage Management
- Underfloor Protection

SMOKER'S SPECIFICATION

- Front and rear ashtrays

Please refer to Specifications and Options pages for standard and optional features. Not all options are available on all models and within all markets. Please contact your local Retailer for more information.



Accessories, servicing and maintenance

Genuine Bentley accessories represent an opportunity to personalise your Bentayga even further. From Fixed Sill Steps that make entry and exit easier to Paint Protection Film that will preserve its looks for years to come, there are numerous options available, to suit a vast array of lifestyles and pastimes. Moreover, they are all designed specifically by Bentley to work seamlessly with your Bentayga.

Consider this just one reason to bring your vehicle back to an official Bentley retailer. No one else has the same expertise, the Bentley-trained technicians or access to genuine Bentley parts – not to mention Service and Maintenance products that can give you complete peace of mind, throughout your vehicle's lifetime. There is no better way to keep your Bentayga close to the impeccable condition it was in, the day it left the factory.

Financing your Bentayga

Our finance agreements are tailored to ensure you make the most of your investment. While other financiers look only at the circumstances of the customer, Bentley Financial Services creates bespoke packages, based not just on your needs and income, but also on the vehicle you have in mind.

To discover more, please talk to your local Bentley Retailer or visit the finance page on the Bentley website.

TO FINANCIAL SERVICES

The Bentley Collection

The Bentley Collection is a selection of lifestyle products inspired by the distinctive design of our cars. With many items lovingly crafted by highly skilled artisans, the Bentley Collection takes our exciting heritage and vision for the future, and seamlessly weaves it into extraordinary statement pieces.

From unique pieces for the home that elevate your everyday life, to lovingly crafted clothing and accessories designed with a distinctive eye for detail, you can bring Bentley's unrivalled refinement to every aspect of your life.

To view the complete range, please contact your local Bentley Retailer or visit the online store at **[BentleyCollection.com](https://www.bentleycollection.com)**

The Bentley Experience

Exclusive to customers, these unique tours offer unrivalled opportunities to explore behind the scenes at the Home of Bentley in Crewe and visit the flagship showroom, CW1 House.

Our knowledgeable hosts will share rare insights into the design and engineering process. You will meet the craftspeople who build your car and discover the innovations and techniques they're using to craft a sustainable vision of the future.

Available as an on-site, real-world experience or as a virtual tour, the Bentley Experience offers a truly tailored journey, with your questions answered by our experts along the way. There is simply no better way to understand the passion that goes into every Bentley.

You can learn more about the Bentley Experience and factory tours on the Bentley website.

VISIT BENTLEY EXPERIENCES

SPECIFICATIONS & OPTIONS

Bentayga

STANDARD SPECIFICATION

POWERTRAIN AND VEHICLE DYNAMICS

- 8 speed automatic transmission
- Bentley Dynamic Ride & All Wheel Steering (V8 engine only)
- Air Suspension with Continuous Damping Control
- Electronic Stability Programme (ESP) with Traction Control (TCS), Anti-lock Braking System (ABS), Electronic Brake Force Distribution (EBD), Hydraulic Brake Assist (HBA), Drag Torque Control (MSR), Electronic Diff Lock (EDL)
- ESP off-road features: Roll-Over Mitigation (ROM), Hill Descent Control (HDC), Trailer Sway Mitigation (TSM)/ESC off-road mode (V8 engine only)
- Front and rear vented disc brakes with Bentley branded black brake callipers (front)
- Speed sensitive, variable ratio, electric power steering
- Permanent all-wheel drive, with centre Torsen differential
- Drive Dynamics Control

EXTERIOR

- Choice of seven standard paint colours: Beluga (solid), Dark Sapphire, Glacier White (solid), Moonbeam, Onyx, St. James' Red (solid), Thunder
- Gloss black radiator matrix grille with bright surround and bright centre bar
- Matt Black matrix lower bumper grille
- 21" multi-spoke wheel - painted
- 21" summer tyres
- Acoustic side glass
- Aluminium side window brightware
- Fixed rear spoiler
- Acoustic, heat insulating front screen
- Heated rear screen
- Panoramic glass roof
- Front and rear fog lamps
- Full LED supplementary lamps and tail lamps
- Full matrix LED headlamps with High Beam Assist*
- Oil and fuel filler caps
- Body coloured door mirrors
- Powerfold, heated, dimming, memory mirrors

- Roof rails
- Welcome orchestration lighting*
- Bentley 'B' wing vent
- Body coloured front bumper apron
- Oval split tailpipe
- Black painted shark fin aerial
- Rain sensing wipers
- Wet arm front screen wipers
- Power latching to driver and passenger doors
- Powered tailgate
- Hands free tailgate

INTERIOR

- Choice of five hide colours: Beluga, Cricket Ball, Imperial Blue, Newmarket Tan, Gravity Grey
- Fluted seat design
- Five seat configuration
- 16 way electric front seats, heated with memory
- Steering wheel mounted gear shift paddles
- Dinamica headlining and upper trim
- Crown Cut Walnut veneer
- Two metal bulls-eye vents with organ stops and centre vents
- Carpet mats front & rear
- Black (Beluga) boot carpet
- Luggage rails on boot floor
- Bentley branded clock
- Folding luggage compartment cover
- Front and rear cupholders
- Lockable, cooled glovebox
- Twin front armrest
- Electronically operated blinds for rear side windows
- Blind stitching
- Double sun visor
- Load through facility
- Stowage: Instrument panel, doors (front and rear), armrests and console
- Leather trimmed gear lever

- Heated, single tone, 3 spoke, hide trimmed steering wheel
- Standard foot pedals
- Keybox

TECHNOLOGY AND DRIVER ASSIST

- Intelligent Park Assist**
- 3D Surround View
- Driver Monitoring Camera*
- Rear view mirror camera*
- Rear Crossing Traffic Assist
- Manoeuvre Assist
- Traffic Sign Recognition*
- Lane Departure Warning
- Exit Warning
- Blind Spot Assist
- Front and rear park distance control
- Turn Assist front and rear*
- High Beam Assist*
- Adaptive Cruise Control*
- Bentley Safeguard Plus*
- Evasive Steering Assist*
- Emergency Assist*
- Driver Assist Profile Switch
- Predictive efficiency assist
- Hill descent function
- My Bentley Connected Car services
- My Bentley Remote Park Assist†
- Touch Screen Remote
- Tyre Pressure Monitoring System (TPMS)
- Wireless phone charger (front centre console)
- Electric tilt and reach adjustment steering column with memory and easy entry function
- Electronic parking brake
- 12V power sockets (x2 cabin, x1 boot)
- 4 zone HVAC including Particle Matter Sensor and PM2.5 screen
- Front and rear air ionisers
- Alarm and immobiliser

- Auto-dimming rear view mirror
- Central locking system

AUDIO AND COMMUNICATION

- 10.9" touchscreen infotainment system
- Bentley signature audio
- DAB radio*
- Voice control and text-to-speech functionality*
- Wi-Fi connectivity / audio streaming
- Bluetooth telephone preparation*
- Four USB-C sockets (x2 front cabin, x2 rear cabin)

CONNECTED CAR**

- My Bentley App Studio
- Activate heating
- Activate lights and horn
- Advanced Preconditioning (hybrid engine only)
- Calendar
- Curfew alert
- ERA Glonass (Russian e-Call)
- Find my car
- My Cabin Comfort
- Green traffic light prediction
- Local hazard information
- Lock my car
- Map update
- My car status
- Natural speech interaction
- News
- Online radio
- Online search
- Perimeter alert
- Personal navigation assistant
- Point of interest search

NCO = No Cost Option. *Regional applicability.
†The driver must constantly supervise the manoeuvre and be able to intervene at any time to maintain safety.
**Connected Car services vary by market, please see the My Bentley support site for regional details. Please see your Bentley Retailer for the latest information.

Bentayga (cont.)

- Privacy mode
- Private e-Call
- Real-time traffic information
- Roadside assistance call
- Satellite Maps
- Song recognition
- Speed alert
- Stolen vehicle finder
- Theft alert
- Traffic sign recognition
- Valet alert
- Weather
- Wireless and wired Android Auto
- Wireless and wired Apple CarPlay®
- Wi-Fi hotspot††

OPTIONAL SPECIFICATION

POWERTRAIN AND VEHICLE DYNAMICS

- Front and rear vented disc brakes with brake callipers in six colours
- Carbon ceramic brakes with brake calipers in seven colours (V8 engine only)
- Sports exhaust (V8 engine only)
- Sports sound (hybrid engine only)

EXTERIOR

- Total of around 60 colours, plus Mulliner colours
- Contrast Silver front bumper apron
- Gloss Black matrix bumper grille to lower bumper apertures
- Black radiator matrix grille with black surround and centre bar
- Electronically retracting tow bar (fixed in some markets)* (V8 engine only)
- Heated, acoustic, IR front screen*
- Rear acoustic privacy glass*
- Jewel fuel and oil filler caps
- 21" multi-spoke alloy wheel – black-painted and machined
- 22" 5 spoke directional alloy wheel – painted
- 22" 5 spoke directional alloy wheel – black painted

- 22" 5 spoke directional alloy wheel – Pale Brodgar Satin
- 21" all season tyres (NCO)
- 22" summer tyres
- Space saving spare wheel
- Self-levelling wheel badge by Mulliner
- Paint Protection

INTERIOR

- Choice of additional veneers: Burr Walnut by Mulliner, Dark Fiddleback Eucalyptus, Dark Stained Burr Walnut, open pore Dark Burr Walnut, open pore Koa, open pore Crown Cut Walnut, Liquid Amber
- Choice of Piano veneers – Black, Linen, Imperial Blue, Cricket Ball, Burnt Oak, Gravity Grey by Mulliner
- Carbon fibre fascia, centre console and door waistrails
- Dark Tint Diamond Brushed Aluminium fascia and door waistrails
- Metal overlay in veneer
- Passenger seat adjustment from rear (as part of the Four Seat Comfort Specification)
- Four additional duo tone interior colour combinations (as part of the Colour Specification)
- Choice of 10 additional hide colours (as part of the Colour Specification)
- Leather upper trim (as part of the Leather Specification – Upper Cabin)
- Contrast stitching
- Contrast stitching and piping
- Hand cross stitching
- Contrast stitching and hand cross stitching
- Boot carpet in coordinating colour (7 colours)
- Picnic tables
- Mulliner console drinks cooler
- Bentley wings emblems to seats
- Deep pile overmats to front and rear
- Contrast binding to carpet overmats
- Lambswool rugs by Mulliner to front and rear (in addition to standard overmats)
- Heated, single tone, 3 spoke, indented, hide trimmed

- steering wheel
- Heated, duo tone, 3 spoke, hide trimmed steering wheel
- Heated, duo tone, 3 spoke, indented, hide trimmed steering wheel
- Contrast steering wheel spokes and gear lever by Mulliner
- Sports pedals
- Contrast seatbelts by Mulliner
- LED welcome lamps
- Animated Welcome Lamps by Mulliner
- Luggage management

TECHNOLOGY AND ENTERTAINMENT

- Trailer Assist** (V8 engine only)
- Head-Up display
- Mood lighting
- Night vision
- Bang & Olufsen for Bentley
- Naim for Bentley
- Bentley Rear Entertainment System
- Two additional USB-C sockets in the rear (with Four Seat Comfort Specification)

CONVENIENCE

- Additional information pack
- Battery charger*
- Bentley charging dock (hybrid engine only)
- First aid kit and warning triangle
- Parking heater (V8 engine only)
- Remote controlled garage door opener*
- Valet key*
- Bentley GPS Tracking System

SPECIFICATION PACKAGES

- Bentayga Styling Specification
- Bentayga Blackline Specification
- Front Seat Comfort Specification
- Four Seat Comfort Specification
- Five Seat Comfort Specification
- 4+1 Seat Comfort Specification
- Bentley Diamond Illumination
- Colour Specification
- Leather Specification – Upper Cabin
- Mulliner Colour Specification
- Touring Specification*
- All-Terrain Specification (V8 engine only)
- Smoker’s Specification
- Black Design Specification

NCO = No Cost Option. *Regional applicability.
†The driver must constantly supervise the manoeuvre and be able to intervene at any time to maintain safety.
††A separate Wi-Fi hotspot data plan is required from a local nominated mobile network operator. Please visit My Bentley support site for details.

Bentayga Azure

STANDARD SPECIFICATION

In addition to Bentayga standard specification.

EXTERIOR

- 'Azure' exterior door badges
- Bright chrome matrix style grille to lower bumper apertures
- 22" 10 spoke alloy wheel – silver painted
- Bright vertical vane upper grille
- Jewel fuel and oil filler caps

INTERIOR

- 'Azure' seat emblems
- 'Azure' fascia badge
- 'Azure' illuminated treadplates
- Sports pedals
- Harmony Diamond Quilt to doors and seats
- Contrast stitching
- Deep pile overmats to front and rear
- Choice of three open pore veneers
- Wellbeing driver's information panel graphics
- Mood lighting
- Heated, duo tone, 3 spoke, hide trimmed steering wheel

SPECIFICATION PACKAGES

- Quilting Specification
- Touring Specification*
- Front Seat Comfort Specification
- Colour Specification

OPTIONAL SPECIFICATION

In addition to Bentayga optional specification.

EXTERIOR

- 22" 10 spoke alloy wheel – black painted and bright machined
- 22" 10 spoke alloy wheel – polished
- 21" multi-spoke alloy wheel – silver painted (NCO)
- 21" multi-spoke alloy wheel – black painted and bright machined (NCO)

INTERIOR

- Heated, single tone, 3 spoke, hide trimmed steering wheel (NCO)

Bentayga Speed

STANDARD SPECIFICATION

In addition to Bentayga standard specification.

POWERTRAIN & VEHICLE DYNAMICS

- Drive Dynamics Control – enhanced Sport mode for Bentayga Speed
- High-powered V8 engine

EXTERIOR

- Speed exterior door badges
- Speed illuminated treadplates
- Dark tint brightware (except Bentley wings, BENTLEY lettering and SPEED exterior badge)
- Dark tint front lamps
- Rear lamps with grey lens
- Dark tint tailpipes
- 22" Speed alloy wheel - dark tint
- Sports exhaust

INTERIOR

- Piano Black veneer
- Speed Precision Diamond Quilting to doors and seats
- Speed colour combination
- Bentayga Speed passenger fascia badge
- Embroidered Bentayga 'Speed' seat embroidery
- Unique performance drivers information panel graphics

SPECIFICATION PACKAGES

- Bentayga Styling Specification – body coloured
- Quilting Specification
- Dark Interior Chrome Specification

OPTIONAL SPECIFICATION

In addition to Bentayga optional specification.

EXTERIOR

- 22" Speed alloy wheel - silver painted
- 23" Speed alloy wheel – grey satin
- 23" Speed alloy wheel – black painted
- 23" Speed alloy wheel – black painted and bright machined
- Black painted roof
- Titanium Akrapovic exhaust

INTERIOR

- Crown Cut Walnut veneer (NCO)
- Dark Fiddleback Ecalyptus (NCO)
- Heated, single tone, 3 spoke, hide trimmed steering wheel (NCO)
- Speed contrast stitch

SPECIFICATION PACKAGES

- Bentayga Styling Specification – carbon, with pinstripe
- Leather Specification – Speed
- Speed Dynamic Specification
- Bright Chrome Specification

NCO = No Cost Option. *Regional applicability.

Hybrid powertrain



Engine: 3.0 V6 TFSi engine combined with 100 kW electric motor

Max power: 462 PS / 456 bhp / 340 kW
(Combined System Power)

Max torque: 700 Nm / 516 lb-ft
(Combined System Torque)

Transmission: 8-speed automatic

Driveline: Permanent all-wheel drive with 40:60 front-to-rear torque split

Top speed: 158 mph / 254 km/h

0-60 mph / 0-100 km/h: 5.1 seconds / 5.3 seconds

Wheelbase: 2,995 mm / 117.9 in

Overall length (Bentayga, Bentayga Azure): 5,125 mm / 201.77 in

Width (across body): 2,010 mm / 79.13 in

Width (including mirrors): 2,222 mm / 87.48 in

Overall height: 1,770 mm / 69.69 in

Fuel tank: 75 litres / 19.8 US gallons

Boot volume (four seat configuration): 387 litres / 13.67 cu ft

Boot volume (five seat configuration): 479 litres / 16.92 cu ft

Kerb weight (5 seat): 2,510 kg

Gross weight: 3,250 kg

Fuel consumption (WLTP Cycle)

Combined (UK): TBC

CO₂ combined: TBC

Driving range: TBC

E-range (EAER): TBC

Fuel consumption
(NEDC Cycle WLTP Equivalent – Europe)

Combined (UK): TBC

CO₂ Emissions: TBC

E-range: TBC

Fuel consumption (NEDC Cycle – ROW)

Urban: TBC

Extra Urban: TBC

Combined: TBC

CO₂ Emissions: TBC

Fuel consumption (EPA Cycle)

City driving (US): TBC

Highway driving (US): TBC

Combined (US): TBC

CO₂ Emissions and fuel consumption data for EU27 is pending, subject to EU Type Approval.
Your mileage will vary and depends on several factors including your driving habits and vehicle condition.

V8 engine



Engine: 4.0 litre twin-turbocharged V8
Max power: 550 PS / 542 bhp / 404 kW
@ 6,000 rpm
Max torque: 770 Nm / 568 lb ft
@ 2,000 - 4,500 rpm
Transmission: 8-speed automatic
Driveline: Permanent all-wheel drive with 40:60
front-to-rear torque split
Top speed: 180 mph / 290 km/h*
0-60 mph / 0-100 km/h: 4.4 seconds / 4.5 seconds
Wheelbase: 2,995 mm / 117.91 in
Overall length (Bentayga, Bentayga Azure):
5,125 mm / 201.77 in
Width (across body): 2,010 mm / 79.13 in
Width (including mirrors): 2,222 mm / 87.48 in
Overall height: 1,728 mm / 68.03 in
Fuel tank: 85 litres / 22.45 US gallons
Boot volume (four seat configuration):
392 litres / 13.84 cu ft

Boot volume (five seat configuration):
484 litres / 17.09 cu ft
Gross weight: 3,250 kg
Fuel consumption (WLTP Cycle)
Low: 22.4 l/100 km / 12.6 mpg (UK)
Medium: 13.2 l/100 km / 21.4 mpg (UK)
High: 10.7 l/100 km / 26.4 mpg (UK)
Extra: High 11.5 l/100 km / 24.6 mpg (UK)
Combined: 13 l/100 km / 22.1 mpg (UK)
CO₂ combined: 296 g/km
EU WLTP Total Driving Range: 654 km / 406 miles

Fuel consumption
(NEDC Cycle WLTP Equivalent – Europe)
Urban: TBC
Extra Urban: TBC
Combined: TBC
CO₂ Emissions: TBC
Combined driving range: TBC

Fuel consumption (NEDC Cycle – ROW)
Urban: TBC
Extra Urban: TBC
Combined: TBC
CO₂ Emissions: TBC

Fuel consumption (EPA Cycle)
City driving (US): 14 mpg
Highway driving (US): 21 mpg
Combined (US): 16 mpg

*With carbon ceramic brakes fitted.
CO₂ Emissions and fuel consumption data for EU27 is pending, subject to
EU Type Approval.
Your mileage will vary and depends on several factors including your driving
habits and vehicle condition.

High-powered V8 engine



Engine: 4.0 litre twin-turbocharged V8
Max power: 650 PS / 641 bhp / 478 kW
@ 6,000 rpm
Max torque: 850 Nm / 627 lb ft
@ 2,250 - 4,500 rpm
Transmission: 8-speed automatic
Driveline: Permanent all-wheel drive with 40:60
front-to-rear torque split
Top speed: 193 mph / 310 km/h*
0-60 mph / 0-100 km/h: 3.4 seconds / 3.6 seconds*
Wheelbase: 2,995 mm / 117.91 in
Overall length: 5,144 mm / 202.52 in
Width (across body): 2,010 mm / 79.13 in
Width (including mirrors): 2,222 mm / 87.48 in
Overall height: 1,728 mm / 68.03 in
Fuel tank: 85 litres / 22.45 US gallons
Boot volume (four seat configuration):
392 litres / 13.84 cu ft

Boot volume (five seat configuration):
484 litres / 17.09 cu ft
Gross weight: 3,000 kg
Fuel consumption (WLTP Cycle)
Low: TBC
Medium: TBC
High: TBC
Extra: TBC
Combined: TBC
CO₂ combined: TBC
EU WLTP Total Driving Range: TBC

Fuel consumption
(NEDC Cycle WLTP Equivalent – Europe)
Urban: TBC
Extra Urban: TBC
Combined: TBC
CO₂ Emissions: TBC
Combined driving range: TBC

Fuel consumption (NEDC Cycle – ROW)
Urban: TBC
Extra Urban: TBC
Combined: TBC
CO₂ Emissions: TBC

Fuel consumption (EPA Cycle)
City driving (US): 14 mpg
Highway driving (US): 21 mpg
Combined (US): 16 mpg

*With carbon ceramic brakes fitted.
CO₂ Emissions and fuel consumption data for EU27 is pending, subject to
EU Type Approval.
Your mileage will vary and depends on several factors including your driving
habits and vehicle condition.

Tyre applicability.

Please click on tyre specification for full product information and EPREL energy labels.

Size	Make	Tyre specification	Bentayga		Bentayga Azure		Bentayga Speed	
			V8	Hybrid	V8	Hybrid	V8	Performance-tuned V8
21"	Pirelli	SCORPION VERDE 285/45 R21 (113W) M+S XL (B)	●	●	●	●		
		P-ZERO 285/45 ZR21 (113Y) XL (B)	●	●	●	●		
		SCORPION WINTER 285/45 R21 (113W) M+S XL (B)	●	●	●	●	●	●
		ICE ZERO 285/45 R21 (99H) XL (D)	●	●	●	●	●	●
22"	Pirelli	P-ZERO 285/40 R22 (110Y) XL (B)	●	●	●	●	●	●
		SCORPION WINTER 285/40 R22 (110W) XL (A)	●	●	●	●	●	●
23"	Pirelli	P-ZERO 285/35ZR23 (107Y) XL B1					●	●





The model presented in this brochure includes optional specifications. Specifications, standard equipment, options, fabrics and colours are subject to change without notice. Your Bentley Retailer will always have the latest information. The name 'Bentley' and the 'B' wings design are registered trademarks of Bentley Motors Limited. Bentley Motors Limited acknowledges the rights of third parties in other trademarks. The models shown may include European and non-European specifications. © May 2025.

