

XT5

| 2017



Cadillac

DARE GREATLY





THE NEXT STEP
IN YOUR JOURNEY

A vehicle designed to help you master what's ahead. From its confident, streamlined stance to an ingenious cabin as spacious as it is versatile, the first-ever Cadillac XT5 is an entirely new kind of crossover. Created by a company that is never done, for people who are much the same.



A black and white photograph of a city street, viewed from a low angle looking up. The sky is a uniform, bright white. On the left, a dark, ornate building facade is partially visible. In the center-left, a multi-story brick building with a grid of windows is prominent. A cylindrical water tower sits atop its roof. On the right, a modern building with a grid of rectangular panels and windows extends vertically. The overall composition is vertical, emphasizing the height of the buildings.

PART I
THE FEELING

APPRECIATE STRIKING LOOKS





REVEL IN SPACE
THAT SPEAKS
VOLUMES



MAKE POSSIBILITIES UNFOLD



BE CONFIDENT IN THE JOURNEY AHEAD





READY FOR WHAT
LIES AT HAND

EMBRACE YOUR RESTLESS AMBITION.
THE 2017 XT5.





PART II
THE FEATURES

EXTERIOR

Sleek in scale, large in ambitions. The XT5 is a dynamic expression of a bold design aesthetic. Graceful planes of steel meet powerful curves and lines to create a sleek crossover like none before.

GRILLE AND CREST

Symbols of substance. The grille and crest are prominently featured as potent symbols. Power and elegance, both are key elements of the front end of a vehicle at the forefront of style, substance and innovation.





BODY DESIGN

Beautifully balanced. Its sculpted body achieves more than simply a striking look. By pushing wheel wells aggressively to the four corners of the vehicle, Cadillac engineers have created generous space, as well as supremely balanced structure for remarkable control and driving.

WHEELS

High style. Crafted with an innovative full-forming process that saves weight while increasing strength, available 20" wheels allow the XT5 to stand apart on the road.



ILLUMINATED DOOR HANDLES

Highlighting design. Lighting within its door handles improves visibility while enhancing the vehicle's long lines.



SIGNATURE LIGHTING

Visionary illumination. The front and rear light systems dramatically frame its sweeping curves and powerful edges. They also employ some of the automotive industry's most advanced LED technology to offer superior illumination.

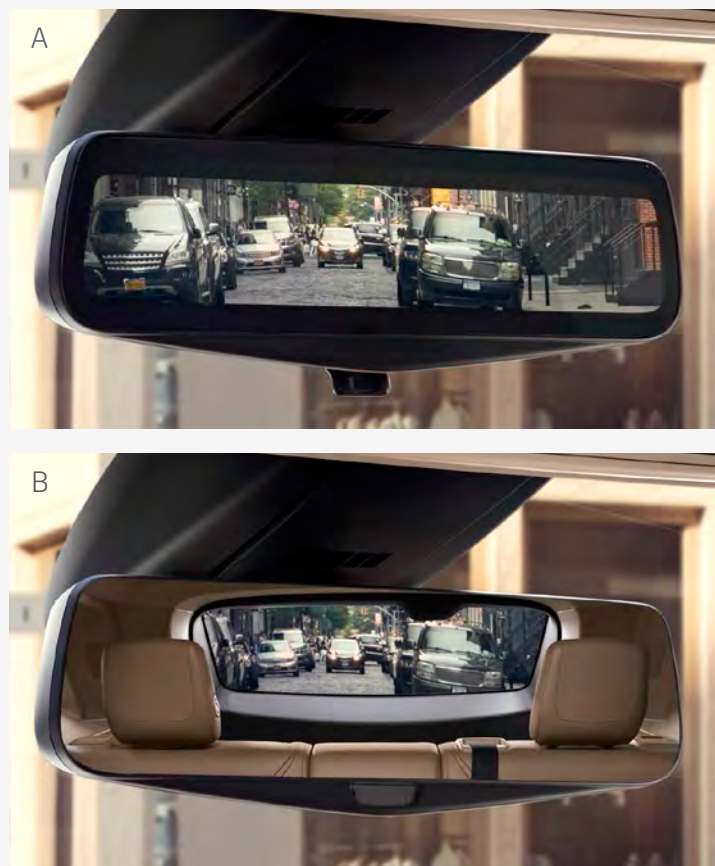
INTERIOR

Modern prestige — the broad view. A wide dash melds cutting-edge technologies with timeless craftsmanship. Wood, leather and other materials have been chosen and fitted with a care reminiscent of fine tailoring. The result is beauty, comfort and utility.

AUTHENTIC MATERIALS

A crafted cabin. Each of the hand-stitched, cut-and-sewn available interior combinations has been carefully curated. Uniquely colored leathers and custom stained woods are paired for a rich, yet understated feel. Wherever you're going, arrive there tastefully.





ENHANCED CABIN CONFIGURATION

Elegant ergonomics. The XT5 cabin is the result of decades of research and understanding how drivers drive and want to interact with controls, functions and features. The shape, placement and feel of every dial, switch and interface have been designed to maximize convenience, comfort and utility.

AVAILABLE REAR CAMERA MIRROR

Backward looking, forward thinking. With just a touch, you can stream the view from a rear-mounted camera to the rearview mirror. This view (A) offers substantially more vision than an ordinary mirror. And a simple touch instantly reverts it back to a traditional mirror (B).

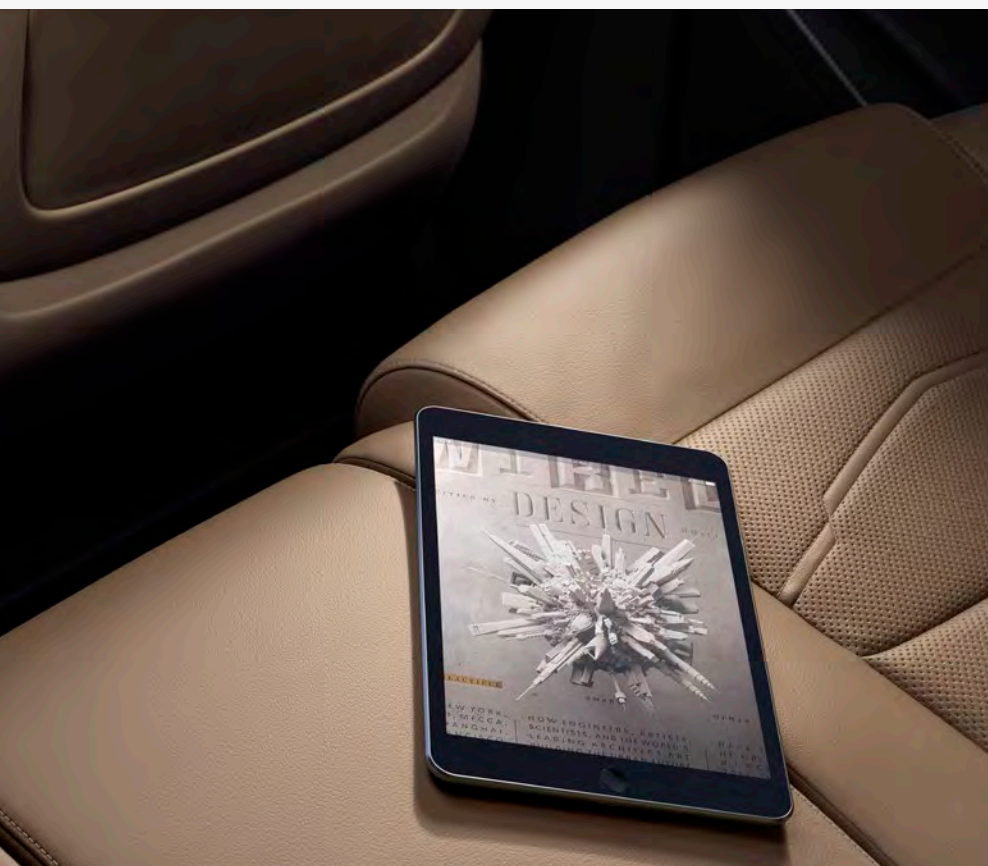
CADILLAC CUE

A gesture toward the future. Cadillac's signature CUE^{®1} system allows you to access communications, navigation and connectivity functions with smartphone-like ease faster than ever before. For improved safety and satisfaction, the brilliant 8" front screen responds to touch, voice commands and even gestures.

PHONE INTEGRATION

Your phone, even smarter. Available Phone Integration compatibility with Apple[®] CarPlay^{™2} allows you to access your contacts, Apple Music[™] and other information from your iPhone[®] with a touch of the screen. You can also access Siri,[®] so features are easily accessible to you or your front-seat passenger.

Android[™] Auto² is also available.



ONSTAR 4G LTE AND BUILT-IN WI-FI® HOTSPOT¹

Stay connected. An available OnStar 4G LTE and built-in Wi-Fi hotspot can support up to seven mobile devices at 4G LTE speeds up to 50 feet away from your XT5.



ENHANCED STEERING WHEEL

Comfort comes full circle. Wrapped in leather, the standard wheel has power tilt and telescoping while the available integrated heating elements warm in cold weather.



RECONFIGURABLE GAUGE CLUSTER

Individualized information. Customize the available 8" diagonal LCD gauge display to one of two themes that combine vehicle data with navigation, entertainment and stunning 3-D vehicle images.



AVAILABLE ULTRAVIEW SUNROOF

Share the wonder. This stunning view spans both the front and rear seats and is equipped with a power sunshade should the sun be too intense.

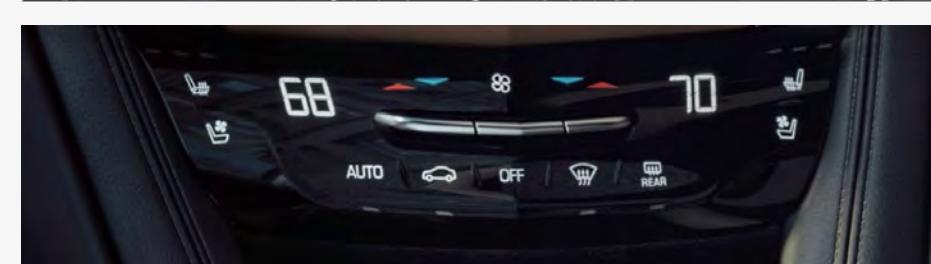
PLATINUM

A further enhancement. From innovative technologies that can read every inch of the road, to comforts that enrich every moment of a drive, to potent details like polished chrome exhaust tips. Platinum is, quite simply, the best made even better.

SURROUND VISION CAMERA

A brand new perspective. Available Surround Vision provides a bird's-eye view of the area immediately surrounding the vehicle when in low-speed Drive or Reverse. This view, projected on the Cadillac CUE® screen, helps increase your awareness when parking or in reverse.





HEATED SEATS

Sit comfortably. Available heated and cooled front-row seats keep you feeling content while the second row of heated rear seats can warm you and your passengers on cooler days. They are also available in Semi-Aniline leather for added pleasure.

HANDS-FREE LIFTGATE

Hands full, hands free. The standard liftgate has an available hands-free feature that allows you to open and close the liftgate with a kicking motion under the left of the rear bumper when the Keyless Access fob is with you. And a memory height function allows you to program how high the gate will open, avoiding damage to the vehicle.

ILLUMINATED SILL PLATES

A step up. This attractive display also serves the function of additional lighting as people enter or exit the vehicle.

HEAD-UP DISPLAY

Information—front, center, safer. A driver's attention is best focused on the road. That's why the XT5 Head-Up Display (HUD) projects selected information, such as mph, speed limit and rpm, onto the front windshield, allowing drivers to access that information without having to look away from the road.

TRI-ZONE CLIMATE CONTROL

Your environment, your way. Available Tri-Zone Climate Control allows the driver, front passenger and rear passengers to adjust the temperature to their choosing. Plus, warm up with heated rear seats.

PRESTIGIOUS UTILITY

Audaciously adaptable. From rear seats with 40/20/40 flexibility to an ingenious cargo management system that can be concealed until it's needed, this vehicle is designed to accommodate your needs and express a distinctive sense of style.

PASSTHROUGH CENTER CONSOLE

Simply superior design. A center console features a convenient, discreet shared storage compartment. Purposeful yet stylish, it will surprise you with all it can do. And all you can do with it.





ADJUSTABLE CARGO MANAGEMENT SYSTEM

Smart space. The XT5's generously spaced cabin features a variety of helpful options, such as the available, adjustable cargo fence that secures luggage and other items. An underfloor storage bin, equipped with hidden hooks for bags, provides additional space and security.

SECOND-ROW VERSATILITY

Open to possibilities. All three rear seats can be folded, individually, for 40/20/40 flexibility. When all are down, they add up to 63 cu-ft of space.¹

KEYLESS ACCESS

Opening made easier. With Keyless Access, you can unlock the doors without removing the key fob from your pocket or handbag. It also works in reverse, automatically locking the doors when you exit the vehicle.

ADAPTIVE REMOTE START

A head start. Adaptive Remote Start allows the engine to be started from up to 100 yards away. The system can also detect the ambient temperature and activate the available heated and ventilated seats accordingly.

INTEGRATED ROOF RAILS

The accent is on utility. Integrated roof rails visually reinforce strong lines and, when paired with available cross rails, create another option for cargo.

AUTOMATIC PARK ASSIST

An effortless arrival. Whether it's a front, rear, parallel or perpendicular parking space, the available Automatic Park Assist guides you to an appropriately sized spot and then helps steer into the space while you control the brakes and speed.

SAFETY

Confidence, your constant companion. Technologies are available to keep watch to the front, rear and side, automatically manage brakes, and even monitor the weather. These are just a few examples of this remarkable vehicle's many available innovative safety features.

AVAILABLE SIDE BLIND ZONE ALERT

Supporting sight. If a vehicle is in an adjacent lane, an icon in the side mirror illuminates to alert you. If you've activated the turn signal to change lanes, the icon flashes to help you avoid a collision.



AVAILABLE SAFETY FEATURES

Safety features are no substitute for the driver's responsibility to operate the vehicle in a safe manner. The driver should remain attentive to traffic, surroundings and road conditions at all times. Read the vehicle's Owner's Manual for more important safety information.

SAFETY



LANE KEEP ASSIST WITH LANE DEPARTURE WARNING

A nudge to safety. Using monitors to sense lane boundaries, Lane Keep Assist gently turns the steering wheel if the system anticipates the vehicle is leaving the lane unintentionally or without using your turn signal. Additionally, Lane Departure Warning, in conjunction with the Safety Alert Seat, will send a warning pulse through the seat cushion.

FRONT AND REAR PARK ASSIST WITH REAR VISION CAMERA

Parking, perfected. Available Front and Rear Park Assist systems sense stationary objects when you're parking, warning you if you come too close. When in reverse, the available Rear Vision Camera automatically displays a live image of the area behind you on the Cadillac CUE screen. Guidelines plot your intended trajectory, helping you see people and objects that might be in your path.

ADAPTIVE CRUISE CONTROL

Keep your distance, intelligently. Adaptive Cruise Control uses cameras and radar to sense and maintain a safe following distance between you and the vehicle ahead.

INTELLIBEAM

High beams, higher thinking. To improve safety, the XT5 is equipped with intelligent headlamps that automatically turn high beams on or off, according to outside conditions. The system also disengages high beams when approaching headlights or taillights are within range.

SAFETY ALERT SEAT

Discreet, invaluable. When there's the possibility of a collision, this patented Cadillac innovation sends a discreet pulse to the driver's seat, indicating the direction of the threat—left, right or both.

FORWARD COLLISION ALERT

Always looking ahead. This intelligent safety system employs front camera and/or radar technology to detect and alert the driver to impending danger.

REAR CROSS TRAFFIC ALERT

Innovation, in reverse. When backing out of a parking spot, Available Rear Cross Traffic Alert uses the Rear Vision Camera to warn of oncoming traffic to either side of your vehicle.



STABILITRAK ELECTRONIC STABILITY CONTROL SYSTEM

A more sure footing. During low traction conditions like snow, rain or gravel, StabiliTrak automatically applies brake pressure and reduces engine torque, helping keep you on track and in control.

RAINSENSE WIPERS

An intelligent wiper. These available XT5 wipers automatically engage when rain is detected. They also adjust their speed to the rain's intensity.



FRONT PEDESTRIAN BRAKING

An extra set of eyes. Available Front Pedestrian Braking is a new technology, available as part of the Driver Awareness Package. The system uses a camera to scan the road ahead for pedestrians. If one is detected, a series of indicators and alerts activates and, if necessary, the vehicle can auto-brake to avoid collisions.

ONSTAR

Securely connected. No matter where you're headed, OnStar helps keep you safe and ready for the journey. For instance, Automatic Crash Response¹ comes standard for the first year. So, if the unexpected happens, you're not on your own.

HANDLING + PERFORMANCE + EFFICIENCY

A wise use of power. The engine activates or deactivates cylinders as performance and efficiency demand. The transmission seamlessly employs eight gears to infinite advantage. And its available AWD system directs torque to the wheels that will use it best. The XT5 is an automobile that makes driving a singular delight.

INTELLIGENT ALL-WHEEL DRIVE

A firm grip on innovation. Available All-Wheel Drive delivers a superior driving experience. A new twin-clutch, streamlined design eliminates intrusion into the passenger area while enhancing launch performance and cornering, especially in adverse weather.





ELECTRONIC PRECISION SHIFT

A new standard of control. With the XT5, Electronic Precision Shift makes its Cadillac debut. This push-button technology lets you move from Park to Drive more quickly, while reducing noise and vibration.

AUTO-DRY BRAKES

Innovation that never stops. When the windshield wipers are activated, this feature automatically positions brake pads closer to the rotors to sweep away moisture and improve brake performance.

8-SPEED TRANSMISSION

High-tech, high gear. An advanced 8-speed transmission has quick steps between gears for better performance and efficiency. It also takes advantage of Cadillac Performance Algorithm Shifting to seamlessly select the best gear for quicker shifts and greater responsiveness.

3.6L V6 ENGINE

Smart power. 310 hp. 271 lb-ft of torque. Statistics tell only part of this advanced power plant's exciting story. It's also equipped with intelligent technologies like Active Fuel Management and Cadillac's Auto Stop/Start feature. The former deactivates engine cylinders when less power is needed, the latter automatically stops and starts the engine when the vehicle is stopped in traffic. Both promote greater efficiency, decreased emissions and all-around driver satisfaction.

ACTIVE FUEL MANAGEMENT

Fueling efficiency! To use fuel most intelligently, Active Fuel Management automatically and imperceptibly deactivates two of its engine's 6 cylinders when their power isn't needed. When it is, all 6 cylinders are activated instantly and seamlessly.

REAL-TIME DAMPING SUSPENSION

Read the road. Every two milliseconds, available Real-Time Damping adjusts the front struts and rear shock absorbers to road and driving conditions for a more precise ride.

STANDARD FEATURES

2017 XT5 Features

DRIVETRAIN

3.6L Direct-Injection V6 VVT Engine 310 hp and 271 lb-ft of torque with Automatic Stop/Start
Front-Wheel Drive
Transmission 8-speed automatic

CHASSIS AND SUSPENSION

Brakes 4-wheel vented disc with antilock braking system (ABS); featuring Auto-Dry, Hill Start, Ready Brake Alert and Brake Assist
Electronic Parking Brake
Steering Electric Power Steering (EPS) Assist
Suspension 4-Wheel Independent, short/long arm with coil-over strut and stabilizer bar, front; modified multi-link with coil-over shock absorber and stabilizer bar, rear

EXTERIOR

Door Handles Body color with chrome strip
Exhaust Rear fascia integrated with dual chrome-finish outlets
Fueling System Capless
Glass Deep-tinted on rear and tailgate windows
Grille Bright Galvano finish
Headlamps Projector beam tungsten halogen, with automatic on/off
LED taillamps and Center High-Mounted Stop Lamp (CHMSL)
LED Daytime Running Lamps
Mirrors Body color, outside heated, power-adjustable and manual-folding
Roof Rails Bright brushed aluminum
Spoiler Rear
Windshield Acoustic laminated
Wipers Front intermittent, rear intermittent with washer
Wheels 18" aluminum with Blade Silver painted finish (see page 53 for more details)

INTERIOR

Adaptive Remote Start
Air Filter Cabin
Antenna Roof-mounted
Audio System CD/MP3 player with two USB charge and playback ports¹ in the center console, two charge-only in back of center console and auxiliary input jack
Bluetooth^{®2} Hands-Free Calling and data service streaming with Natural Voice Recognition
Bose[®] 8-speaker premium audio system
Cadillac CUE[®] (Cadillac User Experience)³ Information and media control system with AM/FM stereo, HD Radio and 8" full-color diagonal LCD capacitive multi-touch screen, four USB ports¹ (see above), two auxiliary power outlets, auxiliary input jack, Natural Voice Recognition and Phone Integration capability with Apple[®] CarPlay^{™4} and, later in the year, Android[™] Auto⁴
Climate Control Dual-zone automatic with individual settings for driver and front passenger
Compass Display
Console Front center floor console with shifter, integral armrest, storage and dual cupholders
Cruise Control Electronic, with set and resume speed
Door Locks Power programmable includes lockout protection and delayed locking, with rear child security
Driver Information Center With three-window configurable color display
Floor Mats Carpeted front and rear
Gauge Cluster 5.7" color display, includes driver personalization, warning messages and vehicle information
Glove Box Lockable
Horn Dual note tone
Keyless Access Includes two remote transmitters enabling Push-Button Start
Liftgate Rear power with memory height
Mirror, Inside Rearview manual day/night
Park Assist Rear
Rear Vision Camera
Rear-Window Defogger
Seating

Five-passenger; Front bucket seats with 8-way power driver adjustment
Leatherette seating
Seat adjuster, front passenger, 6-way power
Second-row 40/20/40 with slide and recline, and cargo area fold-down release
SiriusXM Satellite Radio[®] With three trial months
Steering Column Power tilt and telescoping
Steering Wheel Leather-wrapped 3-spoke, with fingertip controls for Cadillac CUE, audio, cruise and climate control systems
Universal Home Remote Includes garage door opener, 3-channel programmable
Wi-Fi[®] Hotspot Capability[®] Includes three-month or three-gigabyte data trial, whichever comes first
Windows Power with express-up and -down and rear express-down
Wireless Charging⁷ Inductive charging system for portable devices

SAFETY AND SECURITY

Air Bags[®] Driver and front passenger front-impact, driver side knee; Passenger Sensing System; driver and front passenger seat-mounted side-impact for thorax and pelvic protection; front-/second-row outboard head-curtain side-impact
OnStar[®] 4G LTE With standard one-year Guidance Plan,⁹ includes Automatic Crash Response, Stolen Vehicle Assistance, Roadside Assistance, Turn-by-Turn Navigation, Advanced Diagnostics and more (trial excludes Hands-Free Calling)
StabiliTrak[®] Electronic Stability Control System
Tire Inflation Kit
Tire Pressure Monitoring System
Traction Control Full-range, powertrain and brake modulated

AVAILABLE FEATURES

Compact Spare Tire
Engine Block Heater

LUXURY

Enjoy 2017 XT5 Features + these enhancements:

Cargo Area Cargo Management System, adjustable cargo fence and retractable cargo shade
Lighting Accent Light pipes in console
Memory Package With two presets for power driver's seat, outside mirrors, power tilt and telescoping steering column, and driver personalization features
Mirror, Inside Automatic-dimming rearview, with OnStar controls
Mirrors, Outside Heated, body-color, power-adjustable, power-folding with driver-side auto-dimming
Park Assist Front and Rear
Rear Cross Traffic Alert
Seating Leather seating surfaces, manual driver-side adjustable thigh support, 8-way power-adjustable front passenger side, driver and front passenger power lumbar control, driver and front passenger heated
Side Blind Zone Alert¹⁰
Steering Wheel Heated
UltraView Sunroof Power, tilt-sliding, electric with express-open over front-row seating and power sunshade with 100% light blockage
Wipers Rainsense[™] front
Wheels 18" aluminum bright machined faced with Light Argent accents (see page 53 for more details)

AVAILABLE FEATURES

Advanced Security Package Includes locking steering column, door lock and latch shields, self-powered Theft-Deterrent Alarm System, vehicle inclination sensor, vehicle interior movement sensor and locking wheel lugs
All-Wheel Drive With driver mode select
Bose Studio Surround Sound 14-speaker system with surround amplifier
Cadillac CUE Information and Media Control System with Embedded Navigation¹¹ AM/FM stereo with embedded navigation, 8" diagonal color information display, four USB ports,¹ two auxiliary power outlets, auxiliary input jack, Natural Voice Recognition and Phone Integration capability with Apple[®] CarPlay^{™4} and, later in the year, Android[™] Auto⁴
Climate Control Tri-zone Automatic with individual climate settings for driver, right-front passenger and rear passengers
Compact Spare Tire
Driver Awareness Package Includes Safety Alert Seat, Forward Collision Alert, Following Distance Indicator, Lane Keep Assist with Lane Departure Warning, Front Pedestrian Braking, IntelliBeam headlamps and Front Automatic Braking
Engine Block Heater
Headlamps LED, with front park and cornering lamps
Rear Seating Heated Outboard positions
Trailerling Package Includes hitch and wiring harness

PREMIUM LUXURY

Enjoy Luxury Features + these enhancements:

Bose Centerpoint[®] Surround System With Active Noise Cancellation and 14 speakers
Cadillac CUE Information and Media Control System with Embedded Navigation¹¹ AM/FM stereo with embedded navigation, 8" diagonal color information display, four USB ports,¹ two auxiliary power outlets, auxiliary input jack, Natural Voice Recognition and Phone Integration capability with Apple[®] CarPlay^{™4} and, later in the year, Android[™] Auto⁴
Driver Awareness Package Includes Safety Alert Seat, Forward Collision Alert, Following Distance Indicator, Lane Keep Assist with Lane Departure Warning, Front Pedestrian Braking, IntelliBeam headlamps and Front Automatic Braking
Headlamps LED, IntelliBeam
Lighting Accent Interior, in console and doors
Seating Ventilated driver and front passenger
Suspension Performance, driver selectable modes
Wheels 20" aluminum with Sterling Silver painted finish (see page 53 for more details)

AVAILABLE FEATURES

Advanced Security Package Includes locking steering column, door lock and latch shields, self-powered Theft-Deterrent Alarm System, vehicle inclination sensor, vehicle interior movement sensor and locking wheel lugs
All-Wheel Drive With driver mode select
Climate Control Tri-zone Automatic with individual climate settings for driver, right-front passenger and rear passengers
Compact Spare Tire
Driver Assist Package Includes Adaptive Cruise Control,¹² Automatic Safety Belt Tightening, Automatic Parking Assist, Automatic Collision Braking and Front and Rear Automatic Braking
Engine Block Heater
Rear Seating Heated Outboard positions
Trailerling Package Includes hitch and wiring harness
Wheels 20" aluminum Ultrabright machined face with Midnight Silver accents (see page 53 for more details)

PLATINUM

Enjoy Premium Luxury Features + these enhancements:

Advanced Security Package Includes locking steering column, door lock and latch shields, self-powered Theft-Deterrent Alarm System, vehicle inclination sensor, vehicle interior movement sensor and locking wheel lugs
All-Wheel Drive With driver mode select
Climate Control Tri-zone Automatic with individual climate settings for driver, right-front passenger and rear passengers
Console Rear Floor with controls for audio, HVAC and heated rear seats
Floor Mats Premium carpeted front and rear
Gauge Cluster 8" color DIC, includes driver personalization, warning messages and vehicle information
Grille Unique Galvano
Head-Up Display (HUD)
Liftgate Power, programmable, hands-free open and close
Lighting Accent Light pipes in console, doors, and sill plates
Rear Camera Mirror With lens cleaning feature
Rear Seating Heated outboard positions
Seating Semi-Aniline full-leather with chevron perforated inserts and leather-appointed trim
Surround Vision Bird's-eye view of vehicle
Wheels 20" aluminum fully polished finish (see page 53 for more details)

AVAILABLE FEATURES

Compact Spare Tire
Driver Assist Package Includes Adaptive Cruise Control,¹² Automatic Safety Belt Tightening, Automatic Parking Assist, Automatic Collision Braking and Front and Rear Automatic Braking
Engine Block Heater
Trailerling Package Includes hitch and wiring harness

1. Not compatible with all devices. **2.** Go to my.cadillac.com to find out which phones are compatible with the vehicle. **3.** Cadillac CUE functionality varies by model. Full functionality requires compatible Bluetooth and smartphone. Some devices require USB connectivity. **4.** Vehicle user interfaces are products of Apple and Google and their terms and privacy statements apply. Requires compatible smartphone and data plan rates apply. **5.** If you subscribe after your trial period, *subscriptions are continuous until you call SiriusXM to cancel.* See SiriusXM Customer Agreement for complete terms at www.siriusxm.com. Other fees and taxes will apply. All fees and programming subject to change. For more information about NavTraffic, visit siriusxm.com/navtraffic. For more information about Travel Link, visit siriusxm.com/travellink. XM satellite service is available only to those in the 48 contiguous U.S.A. and D.C. Sirius, XM and all related marks and logos are trademarks of Sirius XM Radio Inc. **6.** Requires a compatible mobile device, active OnStar service and data plan. 4G LTE service available in select markets. Visit onstar.com for coverage map, details and system limitations. **7.** The system wirelessly charges one PMA- or Qi-compatible mobile device. To check for phone or other device compatibility, see my.cadillac.com. **8.** Always use safety belts and child restraints. Children are safer when properly secured in a rear seat in the appropriate child restraint. See the Owner's Manual for more information. **9.** Visit onstar.com for coverage map, details and system limitations. OnStar acts as a link to existing emergency service providers. **10.** Before making a lane change, always check the Side Blind Zone Alert display and the side and inside rear mirrors, look over your shoulder for vehicles and hazards, and activate the turn signal. **11.** Map coverage available in the United States, U.S. Virgin Islands, Puerto Rico and Canada. **12.** Adaptive Cruise Control is no substitute for the driver's personal responsibility to operate the vehicle in a safe manner. The driver needs to remain attentive to traffic and road conditions and provide the steering, braking or other inputs necessary to retain control of the vehicle.

VEHICLE DIMENSIONS

SELECT XT5 DIMENSIONS

All measurements in inches.

EXTERIOR

Wheelbase	112.5
Overall Length	189.5
Overall Width	75.0
Overall Height	66.0
Front Track Width	64.4
Rear Track Width	64.4

INTERIOR

	FRONT	REAR
Leg Room	41.2	39.5
Head Room	38.4	36.6
Hip Room	56.0	54.7

SELECT XT5 CAPACITIES

Fuel (gal., approx.)	
FWD	19.4
AWD	21.7
Cargo Volume (cu ft)	
Seat Up	30.0
Seat Down	63.0
Seating Capacity	5

OWNER BENEFITS

We have created the most comprehensive suite of owner benefits offered by any prestige automotive brand in the world, providing everything our Cadillac owners need and everything they deserve.

PREMIUM CARE MAINTENANCE

The Cadillac Premium Care Maintenance program¹ covers routine oil changes, tire rotations, certain air filter replacements and a thorough multi-point vehicle inspection for 4 years or 50,000 miles.²

WARRANTY PROTECTION

All Cadillac vehicles come with a 6-year or 70,000-mile³ Powertrain Warranty. In addition, our 4-year or 50,000-mile³ bumper-to-bumper limited warranty covers repairs on your entire vehicle, including parts and labor, to correct any concerns in materials or workmanship.

ROADSIDE ASSISTANCE

Cadillac offers more years of standard Roadside Assistance than any leading luxury automaker, with services for 6 years or 70,000 miles.³ This 24/7 program provides lockout, towing, refueling, Dealer Technician Roadside services and more.

COURTESY TRANSPORTATION

This program provides alternative transportation and/or reimbursement of certain transportation expenses if your Cadillac requires warranty repairs for 6 years or 70,000 miles.³ That is more years of service standard than any leading luxury automaker.

MY CADILLAC APP⁴

The ingenuity of the XT5 doesn't stop with the vehicle. As a Cadillac owner, an advanced app is available for your new car. From virtually anywhere at any time, a few taps of your finger on your iPhone[®] or Android[™] smartphone let you access features such as parking reminders, Roadside Assistance and more. Plus, in conjunction with the OnStar RemoteLink app, you'll have the ability to remotely start your vehicle (when factory-equipped with remote start) from any place you have cell service and lock and unlock your doors. In addition, you can access key diagnostic information, including fuel tank level and range and remaining oil life.



ONSTAR

Standard for one year, the OnStar Guidance Plan⁵ (trial excludes Hands-Free Calling minutes) lets you connect to a specially trained OnStar Advisor just by pushing the blue OnStar button in your XT5.

AVAILABLE ONSTAR 4G LTE AND BUILT-IN WI-FI[®] HOTSPOT⁶

Now your XT5 has an available built-in Wi-Fi hotspot, for connecting up to seven tablets, laptops or other devices at 4G LTE speed, so the content you crave is always headed where you are. Requires a data plan after the 3-month or 3 gigabyte data trial (whichever comes first).

ONSTAR BASIC PLAN⁷

With the Basic Plan, you've got a powerful connection to your vehicle and the world around you standard for five years at no additional cost to you. You'll have access to select services, which include limited features of the OnStar RemoteLink mobile app that lets you remote start your car, pinpoint your vehicle on a map on your smartphone and manage your vehicle's Wi-Fi hotspot. Plus, send a destination to your in-vehicle navigation screen (if equipped) and lock or unlock your doors—all from your mobile device. Your vehicle can run diagnostic checks on itself and remind you of servicing needs by email.

AUTOMATIC CRASH RESPONSE

In a crash, built-in sensors can automatically alert an OnStar Advisor who is immediately connected into your vehicle to see if you need help—even if you can't ask for it.

EMERGENCY SERVICES

One push of the red emergency button gives you a priority connection to a specially trained OnStar Advisor who can direct emergency services to your exact location and offer critical assistance until help arrives. With OnStar, you're never alone.

CRISIS ASSIST

During severe weather or other crisis situations, OnStar can provide a quick, central point of contact when you need emergency assistance, navigation help or information.

ROADSIDE ASSISTANCE⁸

If you're stranded, have a flat tire or need a tow truck, just ask an OnStar Advisor to get help to your exact location to get you back on the road quickly.

STOLEN VEHICLE ASSISTANCE⁹

If your vehicle is stolen, OnStar can use GPS to pinpoint and work with authorities to quickly help recover it. On many models, an Advisor can send a signal to slow the vehicle or prevent it from being restarted. And with the new Theft Alarm Notification feature, if your car alarm sounds, you'll receive a notification by text, email or phone call.

TURN-BY-TURN NAVIGATION¹⁰

Getting directions is as easy as pushing a button and telling an Advisor where you want to go. Destinations are quickly downloaded to your car, and a voice calls out every turn. An Advisor can also help you with a database of over 14 million points of interest. To plan routes in advance, you can send destinations to your vehicle through an Advisor or the OnStar RemoteLink mobile app.

ONSTAR 4G LTE CONNECTION⁵

With powerful 4G LTE connectivity built right into your vehicle, you have your very own mobile command center that provides faster service delivery and lets you stay connected on the go.

ONSTAR REMOTELINK MOBILE APP¹¹

You can remotely start your vehicle, locate your vehicle on a map, lock or unlock your doors, honk your horn and flash your lights. You can also send destinations to your vehicle through your smartphone.

REMOTE SERVICES¹²

A simple call to an OnStar Advisor can send a signal to unlock your doors, honk the horn and flash the lights or remote start your vehicle. It's technology hard at work to get you back on the road.

HANDS-FREE CALLING¹³

Your vehicle has built-in Hands-Free Calling to help keep you safely connected when your cell phone isn't available. Choose from minute bundles or a minutes-per-month plan.

ATYOURSERVICE¹⁴

OnStar AtYourService is a new way to discover value in the places you go. You get valuable offers for better ways to eat, shop, work and play, through a simple push of the blue OnStar button

ADVANCED DIAGNOSTICS¹⁵

Feel confident and safe knowing you have a self-diagnosing vehicle. Now your vehicle can easily run a check on its key systems and send you a monthly diagnostics report. You'll know more and worry less with Advanced Diagnostics.

DEALER MAINTENANCE NOTIFICATION¹⁵

Is it time for a tire rotation? An oil change? Or a new air filter? You'll always know because your car can email your diagnostics report to the dealer when it's time, and the dealer will contact you to set up a service appointment.

1. Standard on all 2011 or newer vehicles. **2.** Whichever comes first. See dealer for select scheduled maintenance details. **3.** Whichever comes first. See dealer for limited warranty details. **4.** Requires iPhone or Android mobile device. **5.** Visit onstar.com for coverage map, details and system limitations. OnStar acts as a link to existing emergency service providers. **6.** Requires a compatible mobile device, active OnStar service and data plan. 4G LTE service available in select markets. Visit onstar.com for coverage map, details and system limitations. **7.** Does not include emergency or security services. Visit onstar.com for coverage map, details and system limitations. **8.** Roadside service provided by Allstate Roadside Services. Visit onstar.com for details and system limitations. Services vary by model and conditions. **9.** Services vary by model and conditions. Visit onstar.com for vehicle availability, details and system limitations. **10.** Requires Guidance plan. Visit onstar.com for coverage map. Services vary by model. **11.** Requires compatible mobile device and

active OnStar subscription. Visit onstar.com for details and system limitations. **12.** Visit onstar.com for coverage map, details and system limitations. Services vary by model and conditions. Unlock feature requires automatic locks. Remote start requires factory-installed and enabled remote start system. **13.** OnStar Hands-Free Calling requires an existing OnStar service contract and available minutes. Not available in certain markets. Visit onstar.com for coverage map, details and system limitations. **14.** Not available on Basic Plan. Valid offers can vary. Check AtYourService through the RemoteLink mobile app for latest offers. **15.** Capabilities vary by model. Visit onstar.com for details and system limitations. Message and data rates may apply. Requires active OnStar service, email address on file and enrollment in Advanced Diagnostics.

ABOUT THIS CATALOG

We have tried to make this catalog comprehensive and factual. We reserve the right, however, to make changes at any time, without notice, in prices, colors, materials, equipment, specifications, models and availability. Specifications, dimensions, measurements, ratings and other numbers in this catalog and other printed materials provided at the dealership or affixed to vehicles are approximates based upon design and engineering drawings and prototypes and laboratory tests. Your vehicle may differ due to variations in manufacture and equipment. Since some information may have been updated since the time of printing, please check with your Cadillac dealer for complete details. Any variations in colors shown are due to reproduction variation in the printing process. Cadillac reserves the right to lengthen or shorten the model year for any product for any reason, or start and end model years at different times. Note: Some photographs in this catalog show vehicles with optional equipment.

ENGINES

Cadillac products are equipped with engines produced by GM Powertrain or suppliers to GM worldwide. The engines in Cadillac products may also be used in other GM makes or models.

ASSEMBLY

Cadillac vehicles and their components are assembled or produced by different operating units of General Motors, its subsidiaries or suppliers to GM worldwide. We sometimes find it necessary to produce Cadillac vehicles with different or differently sourced components than originally scheduled. Since some options may be unavailable when your vehicle is assembled, we suggest that you verify that your vehicle includes the equipment you ordered or, if there are changes, that they are acceptable to you.

UPDATED SERVICE INFORMATION

Cadillac dealers receive useful service bulletins about Cadillac products. You may purchase them from Helm Incorporated by calling 1-800-782-4356 or by visiting www.helminc.com.

NEW-VEHICLE LIMITED WARRANTY

World-class coverage comes standard on every 2017 Cadillac. This warranty is for Cadillac vehicles registered in the U.S.A. See your Cadillac dealer for terms and conditions.

COVERED FOR 6 YEARS/70,000 MILES (WHICHEVER COMES FIRST)

Powertrain limited warranty with no deductible, Roadside Assistance Program¹ and Courtesy Transportation Program¹

COVERED FOR 4 YEARS/50,000 MILES (WHICHEVER COMES FIRST)

Bumper-to-bumper coverage. Tires — defects in material and workmanship; repairs made to correct any vehicle defect; corrosion on body sheet metal panels.

RUST-THROUGH COVERAGE

Cadillac vehicles are designed and built to resist corrosion and rust-through corrosion. Any body sheet metal that rusts through (in the form of an actual hole in the sheet metal) is covered for six years and unlimited mileage. Cosmetic or surface corrosion — resulting from stone chips or scratches in the paint, for example — is not included in the rust-through coverage. Application of additional rust-inhibiting materials is not required under the rust-through coverage and none is recommended. See your Cadillac dealer for terms of this limited warranty.

FLEET ORDERS

Some standard content may be deleted with fleet orders. See dealer for details.

WHEELS



18" ALUMINUM WITH BLADE SILVER PAINTED FINISH

Standard on XT5



18" ALUMINUM WITH BRIGHT MACHINED FINISH AND LIGHT ARGENT ACCENTS

Standard on XT5 Luxury



20" ALUMINUM WITH STERLING SILVER PAINTED FINISH

Standard on XT5 Premium Luxury



20" ALUMINUM WITH ULTRABRIGHT MACHINED FINISH WITH MIDNIGHT SILVER ACCENTS

Available on XT5 Premium Luxury



20" ALUMINUM FULLY POLISHED FINISH

Standard on XT5 Platinum

¹ Roadside Assistance Program and Courtesy Transportation Program are not part of the New-Vehicle Limited Warranty. A separate booklet titled, "Warranty and Owner Assistance Information" furnished with each new vehicle provides detailed warranty coverage information.

INTERIOR COMBINATIONS

SAHARA BEIGE
LEATHERETTE SEATING SURFACES



JET BLACK ACCENTS



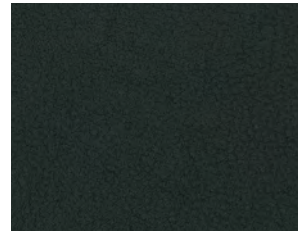
HIGH-GLOSS OKAPI STRIPE WOOD



SAHARA BEIGE
LEATHER SEATING SURFACES WITH MINI-PERFORATED INSERTS



JET BLACK ACCENTS



HIGH-GLOSS SAPELE WOOD



JET BLACK
LEATHER SEATING SURFACES WITH MINI-PERFORATED INSERTS



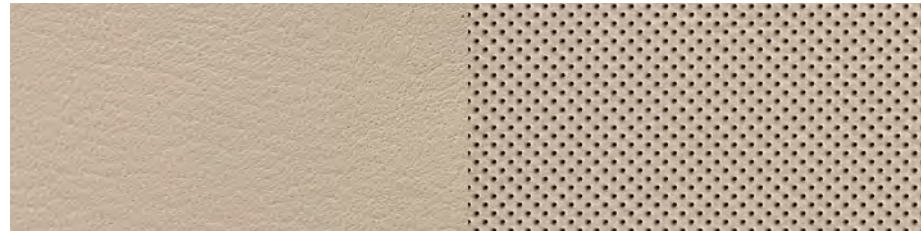
JET BLACK ACCENTS



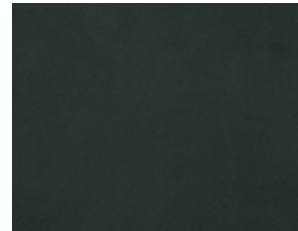
LUNAR BRUSHED ALUMINUM



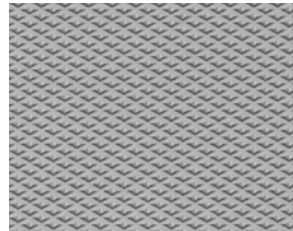
CIRRUS
LEATHER SEATING SURFACES WITH MINI-PERFORATED INSERTS



DARK TITANIUM ACCENTS



DIAMOND CUT ALUMINUM



CARBON PLUM
LEATHER SEATING SURFACES WITH MINI-PERFORATED INSERTS



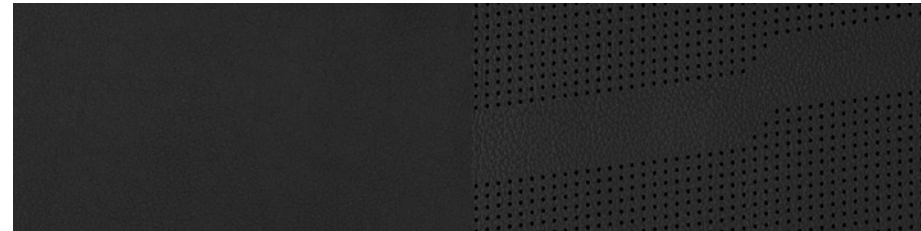
JET BLACK ACCENTS



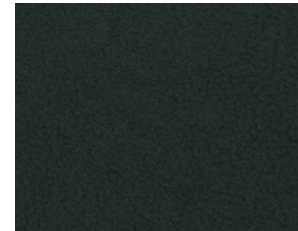
BLACK OLIVE ASH BURL WOOD



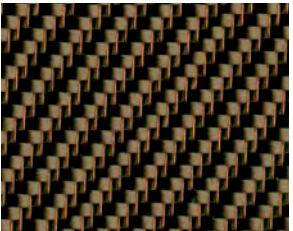
JET BLACK
SEMI-ANILINE FULL-LEATHER SEATS WITH CHEVRON PERFORATED INSERTS



JET BLACK ACCENTS



BRONZE CARBON FIBER



MAPLE SUGAR
SEMI-ANILINE FULL-LEATHER SEATS WITH CHEVRON PERFORATED INSERTS



JET BLACK ACCENTS

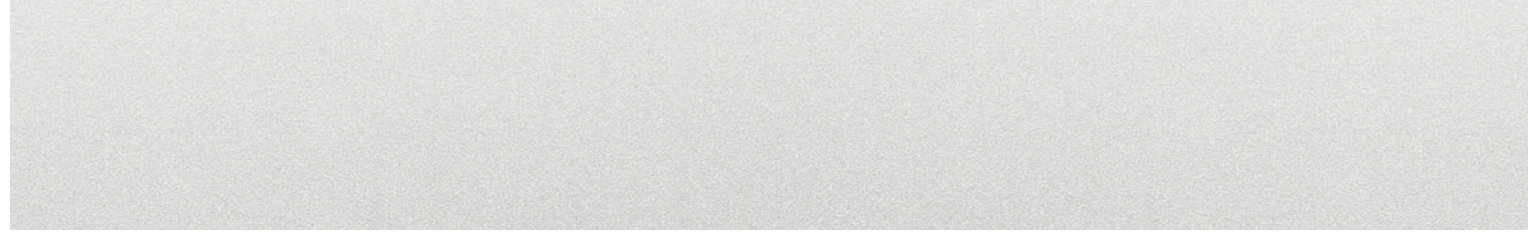


SATIN ROSEWOOD WOOD



EXTERIOR COLORS

CRYSTAL WHITE TRICOAT¹



STELLAR BLACK METALLIC¹



DARK GRANITE METALLIC¹



SILVER COAST METALLIC¹



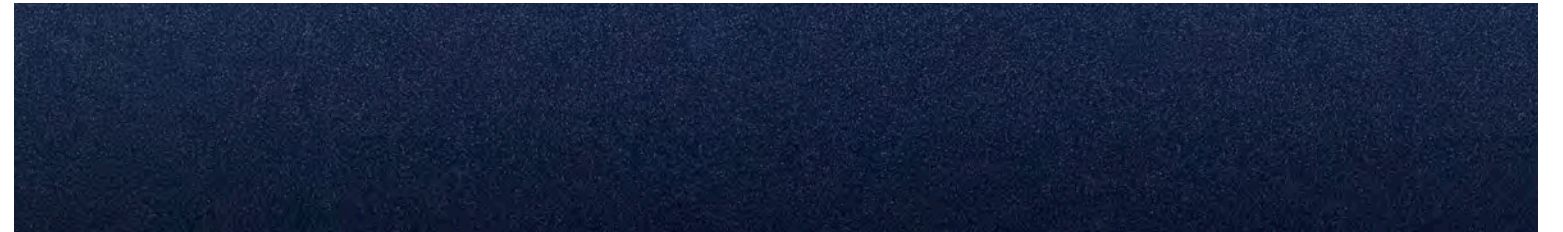
RADIANT SILVER METALLIC



RED PASSION TINTCOAT¹



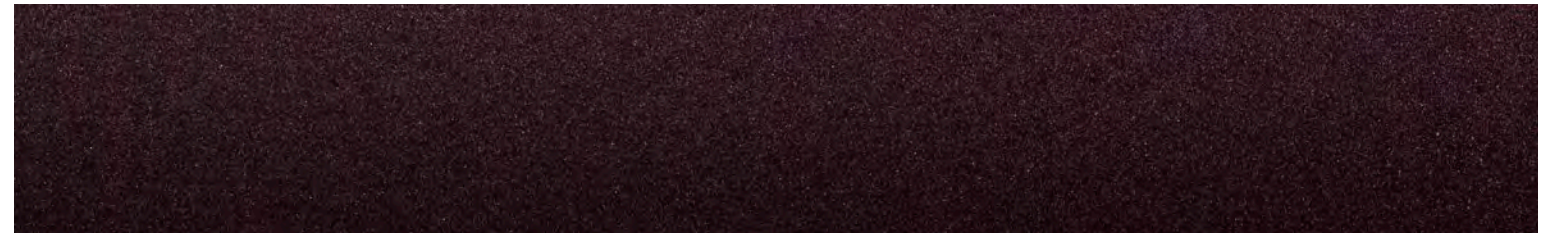
DARK ADRIATIC BLUE METALLIC¹



BRONZE DUNE METALLIC¹ (LATE AVAILABILITY)



DEEP AMETHYST METALLIC¹ (LATE AVAILABILITY)



¹. Available at extra cost.



Cadillac

DARE GREATLY

CADILLAC.COM

