

# ASTRO & ASTRO VAN



C H E V Y   T R U C K S   1 9 8 7

# ASTRO & ASTRO VAN 1987

Two vans from the outside. In its passenger version, Astro is rapidly replacing a lot of sedans, wagons and pickups in garages across America. Here are some reasons why.

**ASTRO FUNDAMENTALS.** These are the elements common to every Astro.

- Rear drive, for substantial cargo, towing and people capacities.

- Compact dimensions, clean, uncluttered exterior styling and seven-step base coat/clear coat paint—with the kind of light fit and smooth finish that result from the use of robotics and other advanced production techniques.

- Flush windows and door handles and hidden drip gutters reduce wind drag.

- Front doors tilt out at the tops when open for ease of access.

- Low step-up height. (Passenger Van: 16.33"; Cargo Van: 16.74").

- Smooth-sliding side door.

- Rear panel doors that open wide while allowing long loads to be carried on the roof.

- Rear step bumper for easy step-in and loading.

- A variety of optional window configurations.

- 6,000-lb. towing capacity, including passengers, cargo and trailer, when Astro is properly outfitted with optional equipment. This is the largest towing capacity available in any compact van.\*

And, at the end of the day, when work and play are done, Astro fits comfortably into a standard garage.

**ASTRO PASSENGER VAN.** In its passenger version, Astro is rapidly replacing a lot of sedans, wagons and pickups in garages across America. Here are some reasons why.

- Standard Vortec 4.3 Liter V6 with Electronic Fuel Injection (EFI) power linked to a 5-speed manual overdrive transmission. A 4-speed automatic with overdrive is optional.

- Five-passenger seating is standard, with optional choices that accommodate from four to eight.

- A wide range of available options outfit Astro for people-carrying, long-haul touring and just about everything in between.

**ASTRO CARGO VAN.** As a cargo van, Chevy Astro is designed to perform just about any task.

- The standard Tech IV 2.5 Liter engine with EFI is tied to a 4-spd. manual transmission.

- Optional Vortec 4.3 Liter V6 with EFI delivers more power.

- Optional 4-speed automatic overdrive transmission is great for city delivery and highway operations.

- Optional 5-speed manual transmission is also available.

- 1,000-lb. payload is standard. Or option up to 1,350 or 1,700 lbs. (Includes passengers and cargo.)

- Maximum cargo volume is a spacious 189.9 cu. ft. (With driver's seat only in the van.)

No matter which Astro you choose, you'll find this vehicle is perfectly in tune with today's driving needs.

\*Excludes other GM products.

*Astro's split personality: Everything that gives the Cargo Van such outstanding working abilities gives the Passenger Van the versatility to do just about everything well.*



## CONTENTS

	Page
ASTRO PASSENGER VAN	
Luxury Touring	
Models	4
Capabilities	6
Versatility	8
Interior Trims	10
ASTRO CARGO VAN	
Load Capabilities	14
Interior Choices	16
ENGINEERING	18
Engines	18
Power Teams	18
FEATURES	20
INTERIOR AND EXTERIOR	
COLORS	22
OPTIONS	21
WINDOW CONFIGURATIONS	22
DIMENSIONS/ SPECIFICATIONS	22
ADDITIONAL INFORMATION	23

Shown on front cover: Astro with Luxury Touring option in Iced Blue Metallic and Sapphire Blue Metallic. Tires supplied by various manufacturers.

# ASTRO LUXURY TOURING

LT stands for Luxury Touring, and, as you can see, this special Astro model is just that—the luxurious way to go.\*

#### PLUSH INSIDE.

- New lush velour fabric covers all seats and trim panels.
- Seating for five is standard.
- New high-back front buckets are contoured for comfort and framed by dual integrated armrests. Seat-backs recline, and the full-width headrests are adjustable.

- Both second and third seats snap out whenever you need maximum cargo room.
- Rear window glass swings out for ventilation.
- A new luxury Sport steering wheel is included.
- Choose your LT interior in Blue or Saddle Tan.

#### STYLISH ON THE ROAD.

Astro's uncluttered lines and clean contours look especially attractive when clothed in sporty LT decor.

- Special colors complement the LT model. Choose Sapphire Blue Metallic or Dark Saddle Metallic. Optional two-tones match California Gold.



Luxury Touring interior in Saddle Tan.



- The midship contoured split-back seat features a fold-down center console with convenience tray and cup pockets. The seats on either side, with reclining backs and fold-down armrests, provide exceptional comfort for two, return the center console to its upright position and voila—room for three.
- The optional rear seat, which has the same split-back design as the middle seat, increases passenger capacity to eight.
- The right-side portion of the middle seat folds forward for easy access to the rear of the vehicle.

Metallic with the Dark Saddle or Iced Blue Metallic over Sapphire Blue Metallic.

- The LT features a unique color stripe at the beltline.
- Rally Wheels are coordinated with the exterior color. Color-keyed aluminum wheels are optional.
- An LT nameplate announces your appreciation of the finer things.

\*The LT model is available Jan. 1987.



Astro with Luxury Touring option in California Gold Metallic and Dark Saddle Metallic. Tires supplied by various manufacturers.



Astro tows up to 6,000 lbs., when properly equipped. Shown at right, Astro with optional CL trim and optional Sport Two-Tone paint in Iced Blue Metallic and Sterling Silver Metallic.



Long loads on the roof don't interfere with back-door operation, thanks to Astro's swing-out rear doors. There's no lift-gate to stretch for and no tailgate to reach over. The rear step bumper also facilitates roof-top loading. Shown at right, Astro with optional CS trim in optional Special Two-Tone Tan and Burnt Red Metallic. Tires supplied by various manufacturers.

The more you get out of life, the more you'll get out of Astro. Astro's many capabilities are a perfect match for nearly any activity you and your family enjoy.

**TOWING.** Boat, camper or trailer, Astro can tow up to 6,000 lbs., when equipped with the optional Heavy-Duty Trailering Package. (Includes passengers, cargo and trailer. Other options are required.) That's more towing capacity than you can get in any other new-size van.\*

**CARGO.** There's room for lots of supplies behind the second seat. The second seat and optional rear seats snap out whenever you need more room. Total cargo volume with only the front seats in place is 151.8 cu. ft.

**LOADING.** Astro's swingout rear doors and smooth-sliding side door make it easy. You can back up to your side door or front porch. And you can tote long objects on the roof.

\*Excludes other GM vehicles.

**PARTYING.** There's plenty of room for an impressive buffet at your favorite picnic spot or before the big game.

**MANEUVERING.** Astro's compact enough to scoot through city traffic, park in little spaces and turn around in an amazing 39.5 feet, curb-to-curb.

**GARAGEABILITY.** Astro fits securely and easily into your garage at night.



## ASTRO CAPABILITIES

Swing-out rear doors and a flat floor make loading Astro easy. The underbody spare tire carrier (standard on CS and CL models) frees up maximum capacity inside the van.



# ASTRO VERSATILITY



Astro's front doors slant back at the tops for easy interior access. Front door pockets are standard.



The interior appointments and flexibility of the Astro Passenger Van are just right to meet your changing needs.

#### SEATING ARRANGEMENTS.

- Accommodations for five are standard in front buckets and middle bench.
- Add the optional third seat, and capacity increases to eight.
- The middle bench can be replaced with optional buckets.
- Second and third bench seats may be arranged to face each other or the rear of the vehicle.

#### UP FRONT.

- Astro's high-tech control center is enclosed in a stylish black faceplate.
- The center of the instrument panel features a fold-down, lighted beverage tray.
- Handy front-door map pockets are included.
- Front doors slant away at the tops for easy entry.

Some of Astro's many other features, both standard and optional, are also shown here.



At top: Astro's high-tech instrument panel, shown with optional Delco AM/FM stereo cassette.

Above left: Standard fold-down beverage tray is located up front.

Above: The optional rear beverage carrier (included with CL trim and eight-passenger seating) can be used to keep things cool.



A choice of seating arrangements accommodates from two to eight passengers. Astro with available seating for eight.



Fold the seat-backs down to create a flat surface.



Turn the middle and available third seats to face each other or the rear.



Remove the second and third seats to open up a large load space.



Add optional captain's chairs to front and middle positions to enhance your riding comfort.

# ASTRO INTERIORS

Inside. That's where you spend most of your time. That's why you'll appreciate Astro's blend of comfort and room. In fact, four feet of walk-through height allows you to move about easily.

## STANDARD.

■ Astro provides basic seating for five, with two high-back buckets up front and a bench seat in the middle.

■ Vinyl material makes these seats perfect for young families.

■ Black mats cover all floor areas.

■ Molded door trim panels and front and midship dome lights are included, as well.

**CS.** This is Astro's mid-level model with:

■ Color-keyed floor mats.

■ Color-keyed moldings, side pockets and trim panels.

■ Color-keyed headliner.

■ Molded storage compartment in the left rear.

■ Remote fuel filler door release.

■ Molded jack and tool area in the right rear.

■ Underbody spare tire carrier.

**CL.** This top-of-the-line package model surrounds you with the best. CL includes items in the CS package, plus:

■ Color-keyed carpeting from door sill to door sill.

■ Carpeted kick panels.

■ An upgraded instrument panel includes gage package, trip odometer and Custom steering wheel.

■ Custom Vinyl or Custom Cloth fabrics—the choice is up to you.



Shown far left: Standard interior in Saddle Tan.

Shown at left: Optional CS interior with optional third seat in Teal Blue.

Shown below: Optional CL interior in Saddle Tan Custom Cloth fabric with optional reclining front buckets, standard second and optional third seat.

## ASTRO SEAT TRIM AVAILABILITY

Front Seat Type* <small>(See Note Below)</small>	Trim Levels		
	Std.	Passenger Van CS	CL
Vinyl High-Back Bucket	■	■	■
Custom Vinyl High-Back Bucket	■	■	■
Custom Cloth High-Back Bucket	■	■	■

\*Note: All optional passenger seats, front and rear, will match the seat trim of the driver's seat.  
 ■ Standard ■ Optional ■ Not Available \*\*Driver and passenger seat.

# ASTRO VAN 1987

Efficiency. That's the name of the game in business. Chevy Astro is the name of the cargo van that gets the job done.

**TECHNICAL BASICS.** Astro is a mid-size van, built in the tradition of hardworking Chevy trucks.

- Rear drive for substantial load and towing capabilities.
- Standard power team: 2.5

Liter Tech IV engine with EFI linked to a 4-speed manual transmission.

- Optional Vortec 4.3 Liter V6 engine with EFI for impressive power.

■ Optional 4-speed automatic overdrive and 5-speed manual overdrive transmissions.

- Independent front coil/semifloating rear leaf spring suspension.

■ Front disc/rear drum brakes.

- P195/75R-15 all-season steel-belted radial tires.

■ 1,000-lb. payload standard.

(Includes passengers and

cargo.) Optional payload ratings of 1,350 and 1,700 lbs.

- Optional 6,000-lb. towing capacity. 2,000-lb. standard. (6,000-lb. capacity necessitates purchase of several required options, including the Vortec V6 engine and automatic transmission.)

**WORKING CREDENTIALS.**

Compact dimensions and uncluttered styling give Astro Van a smooth, contemporary looking exterior. Yet when it comes to business, there's plenty of capacity to get the job done.

- 189.9 cu. ft. of cargo space

(with only the driver's seat in place).

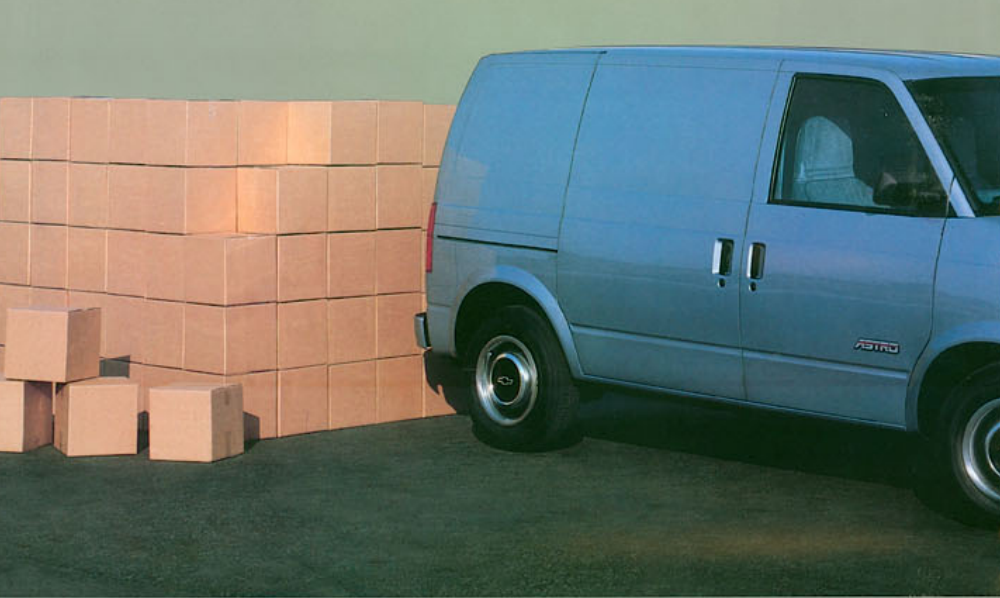
- An easy-open side door.
- Rear panel doors swing out nearly 180° allowing long loads on the roof.

■ A variety of optional window configurations (see p. 22 for details) make Astro Van adaptable for fleet or individual work situations.

Astro. The van that helps you work better—whatever your line of work.



*Astro Cargo Van with optional Special Two-Tone in Deep Red Metallic and Sterling Silver Metallic.*



Astro is one new-size van that hasn't forgotten you buy a cargo van so it can work for and with you.

That's why Astro gives you so many job-oriented features.

**MORE THAN THE COMPETITION**

■ More cargo room than any other new-size van.\* 189.9 cu. ft. without the optional front passenger seat.

■ Generous cargo length—88.9 inches at the floor. And with the optional passenger seat removed, 116.6 inches to the engine cover.

■ More towing capacity.\* Properly equipped with the optional Heavy-Duty Towing Package and other required options, Astro can tow up to 6,000 lbs., including passengers, cargo and trailer. That's big real-world towing ability, the largest towing capacity offered in any compact van.

**NUMEROUS WORK-ORIENTED FEATURES.**

■ Swing-out rear doors. These doors open 57.0 inches (that's nearly 5 feet) to allow easy loading. Just like Chevy full-size vans, these doors swing back almost 180° to allow you to back right up to a delivery door or loading dock, or carry an overhanging ladder on the

# ASTRO VAN CAPABILITIES

roof without interfering with door operation.

■ Sliding side door. This door is on nylon rollers and opens 34.5" wide and 44.5" high.

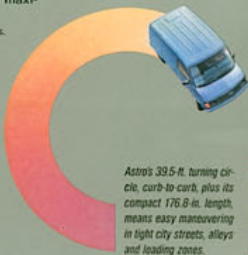
■ A choice of payload capacities. 1,000 lbs. is standard; optional payloads are 1,350 lbs. and 1,700 lbs., including passengers and cargo.

■ Smooth operation with the 2.5 Liter Tech IV engine with EFI and 5-speed manual transmission.

■ Rear step bumper and flat load floor. These standard features facilitate loading and unloading all kinds of cargo.

■ Hideaway spare tire. This optional item places the spare on a crank-down carrier under the vehicle, freeing up maximum space inside.

\*Excludes other GM products.



Astro's 33.5-ft. turning circle, curb-to-curb, plus its compact 176.6-in. length, means easy maneuvering in tight city streets, alleys and loading zones.



Astro boasts a spacious 189.9-cu.-ft. cargo capacity (without optional front passenger seat.) Astro Van shown in Iced Blue Metallic.

Generous load length is another Astro feature: 116.6" (9-2/3') from the engine cover to the rear doors, 88.9" (7-1/3') behind the driver's seat.



The rear panel doors accommodate long loads on top of the van.



Astro Van interior in Teal Blue. Interior is shown with optional high-back bucket seats.



Keeping drivers fresh and alert during a long day is an important part of a work van's job. And Astro Van delivers comfort just as efficiently as cargo.

**STANDARD INTERIOR.**

- A low-back bucket driver's seat allows maximum room for cargo loading.
- Vinyl seat trim is durable and easy to keep clean.
- Black rubber mats protect the floor of the seating area.
- The instrument panel features high-tech-type instrumentation and easy-to-reach fingertip controls.
- Glove box and fold-down beverage tray are located in the center console.
- Molded storage pockets are located on both front doors.
- Four interior colors let you choose the one you like best.

**OPTIONAL COMFORTS.**

- A low-back passenger seat in vinyl.
- High-back driver and/or passenger seats in vinyl. Custom Vinyl or Custom Cloth.
- Bucket seats at midship increase passenger capacity to four.
- Color-keyed floor mats and headliner look good and

# ASTRO VAN INTERIORS



Astro Van instrument panel in Teal Blue. Shown here with optional Delco AM/FM stereo radio.

increase sound-deadening properties.

- A full range of choices from AM radio to top-of-the-line stereo with AM/FM, stereo cassette, graphic equalizer and Seek and Scan make the work day go faster.

Whether you stick to basics or go for the amenities, Astro offers the kind of comfort that helps get the job done.

**ASTRO VAN SEAT TRIM AVAILABILITY**

Seat Type (See Note Below)	Trim Levels	
	Cargo Van	Van
Vinyl Low-Back Bucket (Driver's)	■*	■*
Vinyl High-Back Buckets	■*	■*
Custom Vinyl High-Back Buckets	■*	■*
Custom Cloth High-Back Buckets	■*	■*

Note: All optional passenger seats, front and rear, will match the seat trim of the driver's seat.  
 ■ Standard ■ Optional  
 \*Driver's seat only

Standard low-back driver's seat in Saddle Tan.



# ASTRO & ASTRO VAN ENGINEERING

Design a van that's powerful but practical, roomy yet compact, sophisticated, contemporary and tough. That was the challenge. Build in comfort, flexibility, quality, dependability. Make sure the vehicle is easy to maneuver and park. Astro Van in its passenger and cargo configurations is the impressive result.

Chevy Astro is designed with the aid of sophisticated computer imaging. Modern engineering builds in years of reliable service. Advanced production techniques, including extensive use of robotics in assembly and paint application, coupled with thorough employe training programs, help deliver the kind of quality that you can depend on whether you choose Astro in its passenger or cargo van mode.

Study the exploded view presented on these pages. It highlights many of Astro's important technological features and explains why these items are of benefit to you.



**VORTEC 4.3 LITER V6 ENGINE WITH EFI.** Standard on the Passenger Van and optional in the Cargo Van, this is the most powerful engine available in any new-size van. 150 SAE net horsepower at 4,000 RPM and 230 lbs.-ft. of torque at 2,400 RPM mean more power when you need it to get your job done.

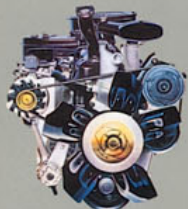
**AS PART OF THE 1987 CHEVROLET NEW-VEHICLE LIMITED WARRANTY,** your Chevy Astro includes three-year perforation-from-corrosion coverage. Exhaust system components not included. See your Chevy dealer for details and other limitations.

## POWER TEAMS

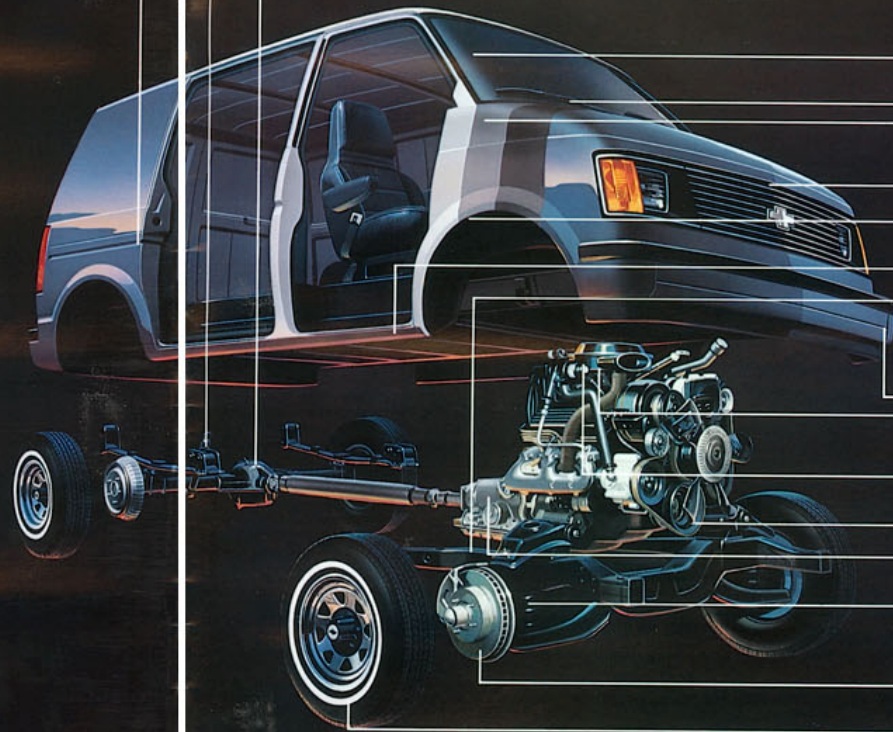
	Astro Passenger	Astro Cargo
L4 2.5 (151) EFI Engine	Standard	Optional
V6 4.3 (262) EFI Engine	Optional	Standard
4-Speed Manual Transmission	Standard	Optional
5-Speed Manual Transmission w/O.D.	Optional	Optional
4-Speed Automatic Transmission w/O.D.	Optional	Optional
<span style="color:red">■</span> Standard <span style="color:blue">■</span> Optional <span style="color:gray">■</span> Not Available		

## SPECIFICATIONS

	2.5 (151) L4	4.3 (262) V6
Displacement—Liter (cu. in.)	LN8	LB4
Engine Ordering Code	4.0 x 3.0	4.0 x 3.48
Bore and Stroke (in.)	9.0 to 1	9.3 to 1
Compression Ratio	96 @ 4400	150 @ 4000
SAE Net Horsepower @ RPM	135 @ 3200	230 @ 2400
SAE Net Torque (lb.-ft.) @ RPM		



**2.5 LITER TECH IV ENGINE WITH EFI.** Standard on Astro Cargo Van, this electronically fuel-injected powerplant is designed to provide responsive cold starts and smooth warm-ups. Its low mass means less weight in the vehicle, its low friction operation produces less wear and its fast burn combustion delivers performance you'll appreciate whenever you drive.



**CONTEMPORARY ENGINEERING.** High-tech construction methods help eliminate gaps and reduce corrosion.

**SUSPENSION.** Lightweight variable-rate single-leaf rear springs adjust automatically to load.

**CHASSIS DESIGN.** Rear drive. This drivetrain provides simplicity of design, substantial towing and cargo capacity, easy maintenance and proven heavy-duty truck service.

Flush-mounted windshield, front air dam, spoiler and smooth aerodynamic design contribute to low 0.38 drag coefficient.

Wet-arm windshield wipers clean efficiently.

**QUALITY PAINT FINISH.** Seven-step paint process. Base coat/clear coat paint is applied in one of the world's most modern paint facilities.

Front hood with inside release allows for easy engine serviceability.

**ANTI-CORROSION TREATMENTS.** Anti-corrosion measures include galvanizing, Zincrometal™, hot-melt wax.

Lower body anti-chip coating protects the finish from stone and gravel nicks.

Integral body frame design. A front stub frame supports the engine; integral-engine front-suspension cross member is attached with six body mounts. This design allows easy serviceability as well as ride smoothness and isolation from road noise.

Front bumper of high-strength alloy steel.

Electronic Fuel Injection (EFI), which eliminates the carburetor, is constantly computer-tuned to compensate for changes in weather and operating conditions.

Electronic spark control (4.3 Vortec V6 only) adjusts timing to control engine knock under heavy loads.

**ENGINES.** Vortec 4.3 Liter V6 engine with EFI.\*

**TRANSMISSIONS.** The 4-speed overdrive automatic transmission is optional with either 4- or 6-cylinder engines.

Front coil springs are computer-selected for ride optimization. The fully independent front suspension features a long and short control arm with spring isolators at the frame.

Front disc/rear drum brakes are standard. Power brakes are standard on the Passenger Van, optional on the Cargo Van.

15" M + S (Mud and Snow)-rated all-season steel-belted radial tires are standard.

\*Standard on Passenger Van. Optional on Cargo Van.

# ASTRO & ASTRO VAN FEATURES AND OPTIONS

Astro provides impressive standard features and optional equipment, as you can see on these pages. Study the list of standards. Then check the photos on these pages (all items pictured are optional) and the available equipment to determine which of these options personalize Astro to meet your needs.

## STANDARD FEATURES ASTRO/ASTRO VANS INTERIOR

- Armrests: LH, All Models; RH, Passenger Model Only
- Ashtray: On Engine Cover Console
- Coat Hooks: LH Side
- Floor Covering: Black Rubber Mat
- Headliner: Color-keyed, Driver Area Only
- Heater and Defogger: Outside-air-type
- Hood Lock: Inside Release
- Instruments:

Gages: Speedometer, Odometer and Fuel Switches; Main, for Interior, Exterior and Instrument Panel, On Steering Column for Direction Signals, Windshield High and Low Beams, and Wash/Wiper/Washers, Hazard Warning, Heater Fan and Ignition with Key-in Warning Buzzer. Door-operated Dome Lamp.

Warning Lights: Generator, Oil Pressure, Engine Temperature, Service-parking Brake, Direction/Hazard Signal and High Beam

- Insulation and Sound Dampening Material: On Firewall, Under Floor Mat, Inside Engine Cover

- Lights: Instrument Cluster and Front and Rear Dome

- Safety Belts: All Seating Positions
- Seats: Cargo Van—Low-back Bucket Driver only, Passenger Van—High-back Front Buckets for Driver and Passenger Plus Center 3-passenger Bench. All with Vinyl Trim.

- Spare Tire Carrier: LH Side in Rear
- Steering Column and Wheel: 15-1/4" Black Vinyl Wheel; Black Energy-absorbing Steering Column

- Storage Box: In Engine Cover Extension, with Beverage Holder Provisions
- Sunshades: LH, All Models; RH, Passenger Model Only
- Trim Panels: Molded Plastic on Front and Sliding Side Doors.

- EXTERIOR
- Bumpers: Front and Rear, Paint Lower Body Color
- Doors: Driver and Passenger Front Side Doors; Sliding RH Side Cargo Door, and RH and LH Rear Load Doors

- Grille: Molded Plastic, Painted Black
- Horn: Single, Electric, Low-note
- Hubcaps: Bright Metal with Black Trim
- Lights: Backup Lamps, Integral with Tail Lamps, Parking Lamps, Rectangular Headlamps, and Side Marker Lamps
- Mirrors: RH and LH Painted Black, Adjustable
- Tools: Scissors-type Jack, Wheel Wrench and Two Wheel Blocks
- Windshield Wipers/Washers: Electric, Two-speed.



Black roof-mounted luggage rack—new in January 1987.



Overhead console with sliding door compartments and individual reading lamps.



Qualified veterans may receive a one-time allowance toward the purchase of vans for the handicapped through their nearby VA Regional office. Information regarding replacement or add-on lifts is available through VA Medical Centers.



Van conversions add dash to your Astro. Customized vans are supplied to Chevrolet dealers by outside manufacturers, independent of Chevrolet, which is not responsible for the safety or design features, materials or workmanship of any alteration by any such upfitter.

Front air dam with driving lamps—new in January 1987.



Delco AM stereo/FM stereo ETM™ radio with stereo cassette. Seek and Scan, graphic equalizer and clock, dual front speakers with wiring for rear speakers and backlighting features.

\*Receives C-Quam™ AM stereo broadcasts. C-Quam is a registered trademark of Motorola, Inc.

## OPTIONAL EQUIPMENT ASTRO/ASTRO VANS INTERIOR

- Air Conditioning, Front
- Air Conditioning, Front and Rear (Pass. only)
- Auxiliary Lighting
- Cigarette Lighter
- Floor Covering, Color-Keyed Rubber
- Gages
- Grille, Deluxe
- Heater, Rear Compartment
- Heaters, Deluxe with Side Window Defogger
- High-Back Bucket Seats (Cargo only)
- Inside Fuel Filler Door Release
- Intermittent Wiper System
- Paint: Special Two-Tone Split Two-Tone
- Power Door Lock System
- Power Windows
- Reading Lamps
- Roof Console
- Seating: 2-Passenger (Cargo only) 4-Passenger (Pass. and Cargo) 7-Passenger (Pass. only) 8-Passenger (Pass. only)
- Seat-back Recliners and Armrests
- Steering Wheel, Comfortfit; Custom, Luxury/Sport
- Sunshade, Right Side (Cargo only).

## EXTERIOR

- Bumpers, Color-Keyed with Rub Strips and End Caps
- Bumpers, Chromed with Rub Strips and End Caps
- Glass, Tinted
- Glass, Deep-Tinted
- Glass, Rear Door (Cargo only)
- Glass, Rear Quarter
- Glass, Swing-Out, Rear Door
- Glass, Swing-Out, Side (Cargo only)
- Headlamps, Halogen
- Mirrors, Deluxe Painted Black
- Rally Wheels
- Rail-mounted luggage rack, black (avail. Jan. 1987)
- Wheels, Cast Aluminum
- Wheel Covers
- Wheel Trim Rings.

## PERFORMANCE

- Engine Block Heater
- Engine Oil Cooler
- Front Stabilizer Bar
- Heavy-Duty Battery
- Heavy-Duty Radiator
- Heavy-Duty Radiator and Transmission Oil Cooler
- Performance Axle Ratio
- Rear Axle Locking Differential.

## ENGINES AND TRANSMISSIONS

- 4.3 Liter (262 Cu. In.) Vortec V6 Engine with EFI\* (Cargo only)
- 5-Speed Manual Overdrive Transmission\*
- 4-Speed Automatic with Overdrive Transmission.

\*Standard on Passenger Van.

## APPEARANCE AND CONVENIENCE OPTIONS

These items are included in the trim levels indicated.

	Astro Trim Levels			
	Cargo	Passenger	CS	CL
Auxiliary Lighting				
Bumper Rub Strips and End Caps, Color-Keyed				
Carrier, Spare Tire, Underfloor				
Cigarette Lighter				
Coat Hook, RH				
Cover, Jack and Tool				
Floor Covering, Black Rubber				
Carpeting				
Color-Keyed Rubber				
Gages				
Grille, Deluxe				
Headliner, Full-Length				
Heater, Deluxe with Side Window Defogger				
Inside Fuel Filler Door Release				
Mirror, Lighted, Vanity				
Moldings, Black Body Side and Wheel Opening				
Sill Plates and Stepwell Mats				
Steering Wheel, Custom				
Stops, Positive, Rear Door				
Storage Compartment, Rear				
Wheel Covers, Bright Metal				
Wheel Trim Rings				

Standard Optional Not Available Some options may require the purchase of other options. Chevrolet dealers have details. \*Front area only. Mats for entire floor area optional.

## MECHANICAL

- Deadweight Trailer Hitch
- Electronic Speed Control
- Fuel Tank, 27-Gallon Capacity
- Heavy-Duty Shock Absorbers
- Power Brakes (Cargo only)
- Power Steering
- Trailer Special Equipment
- Underfloor Spare Tire Carrier.

## DELCO AUDIO EQUIPMENT

- AM Radio, Manually Tuned with Dual Front Speakers
- AM/FM Radio with Dual Front Speakers
- Electronically Tuned AM/FM Stereo with Dual Front Speakers, Wiring for Rear Speakers\* and Backlighting Features

- Electronically Tuned AM/FM Stereo with Clock, Seek and Scan, Dual Front Speakers with Wiring for Rear Speakers\* and Backlighting Feature
- Electronically Tuned AM/FM Stereo Radio with Cassette, Seek and Scan and Clock, Dual Front Speakers, Wiring for Rear Speakers\* and Backlighting Feature

- Electronically Tuned AM Stereo/FM Stereo Radio with Stereo Cassette, Seek and Scan, Graphic Equalizer and Clock, Backlighting and Dual Front Speakers with Wiring for Rear Speakers.\*

\*Four rear speakers included when ordered on CS, CL model.

\*Receives C-Quam™ AM stereo broadcasts. C-Quam is a registered trademark of Motorola, Inc.



Rally wheels.



Cast aluminum wheels.



Bright metal wheel covers.

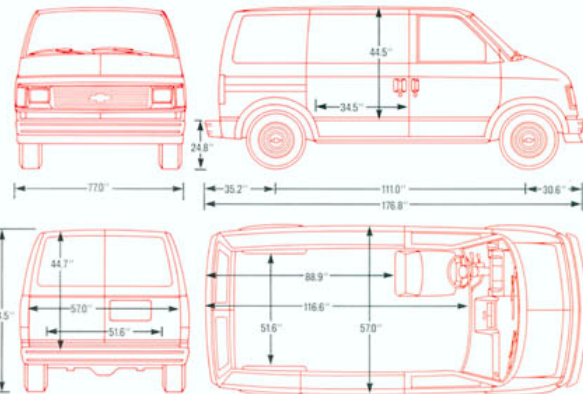


Trim rings.

# ASTRO & ASTRO VAN

## FACTS

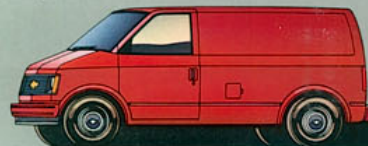
### DIMENSIONS



### STANDARD SPECIFICATIONS—ASTRO VANS

	Cargo Van	Passenger Van
Engine—Liter (Cu. In.)	2.5 (151) EFI L4	4.3 (262) EFI V6
Front Suspension—Type	Independent—Coil Springs	Independent—Coil Springs
—Capacity	2700 lbs.	2700 lbs.
Rear Suspension—Type	Variable-rate Leaf Springs	Variable-rate Leaf Springs
—Capacity	2490	2900
—Axle Ratio	3.42	2.73
Brakes—Disc/Drum	Manual	Power
Electrical—Battery	525 CCA	525 CCA
—Generator	85 Amp	85 Amp
Fuel Tank—Capacity	17-Gal.	17-Gal.
Steering	Manual	Manual
Transmission—Manual	4-Speed	5-Speed
Tires—All-Season Radial	(4) P195/75R-15	(4) P195/75R-15
—Compact Spare	(1) T145/80D-15	(1) T145/80D-15
Wheels	(4) 15" x 6"	(4) 15" x 6"
	(1) 16" x 4"	(1) 16" x 4"

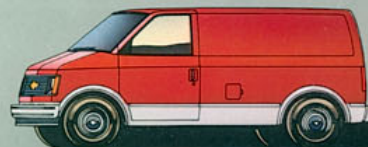
### ASTRO/ASTRO VAN PAINT TREATMENTS.



**SOLID COLOR PAINT** is standard on Astros/Astro Vans.



**SPECIAL TWO-TONE.** (Optional.) Includes decal striping at the beltline with Color Code 2 applied below.



**SPORT TWO-TONE.** (Optional.) Includes paint break at lower body feature line and around wheel flairs with Color Code 2 applied below.

### ASTRO/ASTRO VAN WINDOW TREATMENTS.



Standard Cargo Van configuration.



Standard Passenger Van configuration (optional on Cargo Van).



Optional full window configuration. (Cargo and Passenger Vans.)

### INTERIOR AND EXTERIOR COLOR AVAILABILITY CHART

Trim Level—Seat Type	Teal Blue	Burgundy	Saddle Tan	Slate Gray
<b>STANDARD ASTRO (Cargo and Passenger)—Vinyl Seat (Cargo Only)</b>				
Vinyl High-Back Bucket Seats				
Custom Vinyl High-Back Bucket Seats				
Custom Cloth High-Back Bucket Seats				
<b>ASTRO CS (Passenger Only)—Vinyl High-Back Bucket Seats</b>				
Custom Vinyl High-Back Bucket Seats				
Custom Cloth High-Back Bucket Seats				
<b>ASTRO CL (Passenger Only)—Custom Vinyl High-Back Bucket Seats</b>				
Custom Cloth High-Back Bucket Seats				

EXTERIOR COLORS Solid and Two-Tone Combinations	Color Code 1	Color Code 2	RECOMMENDED INTERIOR TRIM COLOR
<b>BLUE, ICED (Metallic)</b>			
Blue, Midnight (Metallic)			
Silver, Sterling (Metallic)			
<b>BLUE, MIDNIGHT (Metallic)</b>			
Gold, California (Metallic)			
Silver, Sterling (Metallic)			
<b>BROWN, DARK (Metallic)</b>			
Gold, California (Metallic)			
Silver, Sterling (Metallic)			
<b>GOLD, CALIFORNIA (Metallic)</b>			
Blue, Midnight (Metallic)			
Red, Burnt (Metallic)			
<b>GRAY (Metallic)</b>			
Blue, Midnight (Metallic)			
Silver, Sterling (Metallic)			
<b>RED, BURNT (Metallic)</b>			
Gold, California (Metallic)			
Silver, Sterling (Metallic)			
<b>RED, DEEP (Metallic)</b>			
Red, Burnt (Metallic)			
Gold, California (Metallic)			
Silver, Sterling (Metallic)			
<b>SILVER, STERLING (Metallic)</b>			
Blue, Midnight (Metallic)			
Red, Burnt (Metallic)			
<b>TAN</b>			
Blue, Midnight (Metallic)			
Gold, California (Metallic)			
Red, Burnt (Metallic)			
<b>WHITE, IVORY</b>			
Blue, Midnight (Metallic)			
Gold, California (Metallic)			
Red, Burnt (Metallic)			
Silver, Sterling (Metallic)			

**IMPORTANT: A WORD ABOUT THIS CATALOG.** We have tried to make this catalog as comprehensive and factual as possible and we hope you find it helpful. However, since the time of printing, some of the information you will find here may have been updated. Also, some of the equipment shown or described throughout this catalog is available as factory-installed options, dealer accessories and specialized equipment from various independent suppliers at extra cost. Your dealer has details and, before ordering, you should ask him to bring you up to date.

The right is reserved to make changes at any time, without notice, in prices, colors, materials, equipment, specifications and models. Check with your Chevrolet dealer for complete information.

**A WORD ABOUT ASSEMBLY, COMPONENTS AND OPTIONAL EQUIPMENT IN THESE CHEVROLET PRODUCTS.** The Chevrolet Astro Passenger and Cargo Vans described in this catalog (Astro/Astro Van) are assembled at facilities operated by General Motors or GM of Canada. These vehicles incorporate thousands of different components produced by car and truck groups and various component divisions of GM and by various suppliers worldwide to General Motors. From time to time during the manufacturing process, it may be necessary, in order to meet public demand for particular vehicles or equipment, or to meet federally mandated emissions, safety and fuel economy requirements, or for other reasons, to produce Chevrolet products with different components or differently sourced components than initially scheduled. All such components have been approved for use in Chevrolet products and will provide the quality performance associated with the Chevrolet name.

With respect to factory-installed extra-cost optional equipment, make certain you specify the type of equipment you desire on your vehicle when ordering it from your dealer. Some options may be unavailable when your vehicle is built. Your dealer receives advice regarding current availability

of options. You may ask your dealer for this information. GM also requests the dealer to advise you if an option you ordered is unavailable. We suggest that you verify that your vehicle includes the optional equipment you ordered or, if there are any changes that they are acceptable to you.

These vehicles are also available under the GMC nameplate Safari SL Passenger Van and Safari Cargo Van.

**FOR INFORMATION ON ANY NEW CHEVY TRUCK.** See your Chevy dealer for a complete selection of 1987 truck catalogs. They cover

■ Chevy S-10 Blazer ■ full-size 4WD Blazer ■ Chevy S-10 Pickup ■ full-size Chevy Pickup ■ Suburban ■ El Camino ■ Chevy Van/Sportvan ■ Step-Van ■ Astro/Astro Van ■ all Medium-Duty Chevys and the ■ Chevy Recreation and Trailering Guide.

**LET'S GET IT TOGETHER... BUCKLE UP.**

**A WORD ABOUT ENGINES.** Chevrolet trucks are equipped with engines produced at facilities operated by GM car and truck groups, subsidiaries or affiliated companies worldwide.

**A WORD ABOUT UPDATED SERVICE INFORMATION.** Chevrolet regularly sends its dealers useful service bulletins about Chevrolet products. Chevrolet monitors product performance in the field. We then prepare bulletins for servicing our products better. Now you can get these bulletins, too. Ask your dealer. To get ordering information, call toll-free 1-800-551-4123.

Shown on back cover:  
Astro cargo feet in Deep Red Metallic.



NOTHING WORKS LIKE A CHEVY ASTRO