



2020
GT-R®





Question everything. Get better answers. The 2020 Nissan GT-R® rewrites the laws of aerodynamics and makes the air your ally. ATTESA E-TS® All-Wheel Drive redefines supercar performance to give you 4-season thrills. It proves you can outperform purpose-built mid-engine exotics and have 4 seats, a handcrafted interior, even a trunk. This is tech that breaks rules and shatters records. This is tech that moves.

Nissan GT-R® Premium shown in Super Silver QuadCoat.

2020 NISSAN GT-R® 50TH ANNIVERSARY EDITION

CELEBRATING 50 YEARS OF THRILLS

A GT-R sighting is unusual. And seeing a 50th Anniversary Edition is sure to draw crowds. Befitting its legendary status, there are three exterior colors, including Bayside Blue – brought back for this special tribute – featuring a unique blue color on new 20" RAYS® forged-alloy wheels. From a race-inspired graphics package to special anniversary badging, the iconic GT-R serves up even greater presence.

Step across signature kick plates and settle into hand-stitched semi-aniline leather-appointed front seats. From an Alcantara® headliner to a special-edition tachometer, every drive is a celebration in the GT-R 50th Anniversary Edition.



50th Anniversary



50th Anniversary

NISSAN GT-R® NISMO

BEYOND ULTIMATE

Ultimate Nissan vehicle, ultimate GT-R, ultimate supercar. And yet, it will never be enough. For 2020, the GT-R has been refocused – lighter, more responsive, with enhanced aerodynamics. There may not be a word for beyond ultimate – but there is the 2020 GT-R NISMO.

Under the hood, 600 horsepower is now more accessible, with retuned turbos from our GT3 racing program providing quicker response across the rpm range.

On the outside, the new carbon-fiber roof, hood, and fenders reduce weight and bring the center of gravity lower, closer to the center, enhancing stability and providing more responsive handling. New vents on the front fenders increase aerodynamic downforce for sharper turn-in.

Taking advantage of the exterior changes, new, lighter 20" NISMO wheels, new compound tires with greater grip, and a retuned suspension take handling to the next level.

Inside remains just as focused, with Recaro® seats, an Alcantara®-wrapped steering wheel with red leather stripe at 12 o'clock, and signature NISMO red throughout the cabin, including the seatbacks, tachometer face, shift lever, and door handle pulls.

481 lb-ft of torque

0.26 coefficient of drag

NISMO unique 9-spoke wheels

NISMO carbon-fiber body kit



600_{HP}

nismo®

Competition-proven stopping power. Bringing technology developed from racing, the Nissan Brembo® Carbon Ceramic Braking System brings massive stopping power and enhanced fade resistance.



NISSAN GT-R® TRACK EDITION

A MASSIVE INJECTION OF NISMO®

For 2020, the Nissan GT-R Track Edition enjoys a comprehensive performance upgrade courtesy of NISMO, starting with the 600-horsepower GT-R NISMO engine. Power, handling, braking, appearance – in every way the Nissan GT-R Track Edition is an incredible blend of GT-R civility and GT-R NISMO ultimate performance.¹

NEW CARBON-FIBER ROOF

Reducing weight from the top lowers center of gravity for greater stability and flatter cornering.²

NEW WHEELS AND TIRES

Lighter unsprung weight from new NISMO 20" alloy wheels. Greater grip from new-compound high-performance tires.

ENHANCED NISMO-TUNED SUSPENSION / CERAMIC BRAKES

Enhanced handling from NISMO-tuned suspension. Available competition-developed Nissan Brembo® Carbon Ceramic Braking System for fade-resistant performance.

NEW GT3 TURBO POWER

600 hp from turbochargers from Nissan's GT3 racing program.

Track

Edition



HANDCRAFTED PERFORMANCE

Each GT-R® engine is assembled by a single craftsman – called “Takumi” – renowned for their dedication and mastery. And with only five Takumi in the world entrusted with the honor, the plaque on the engine bearing their name has true significance. As one of the Takumi says, “We put our souls into each engine, hoping to deliver that excitement to customers.”

565
HORSEPOWER

MASTERY AT EVERY TOUCHPOINT

The GT-R's interior is a masterful blend of premium materials, from hand-stitching in the cabin to a dash-board pad created from a single, hand-selected Nappa leather hide. Subtle etching on the aluminum bezels enhances their feel, while sport seats provide comfort and support, creating an ideal place to take it all in.

Carbon-fiber
interior accents

Hand-stitched
leather-appointed
interior trims

Machined
aluminum
interior accents

AERODYNAMIC ALCHEMY

Rather than being confined by the demands of aerodynamics, the Nissan GT-R sculpts the air to its needs – becoming a force of nature, as much as a force to be reckoned with. Every aerodynamic detail was considered. A 1% energy loss around the C-pillar was enough for the GT-R's fanatical engineers to redesign the pillar to create a cleaner design.

.26_{cd}

A SHARPER FOCUS ON DRIVING

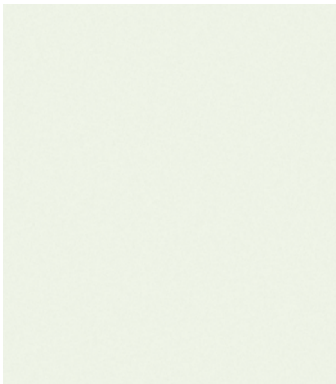
Taking advantage of the capabilities of Nissan GT-R requires your attention, but it should never feel like information overload. The GT-R's intuitive dashboard design makes access and use simpler, giving you more time to focus on what's important – the pure enjoyment of the drive.

5 customizable
performance
screens

Display
Commander
media controller

Steering
wheel-mounted
paddle shifters

CHOOSE YOUR COLOR



Pearl White TriCoat³



Super Silver QuadCoat³



Gun Metallic

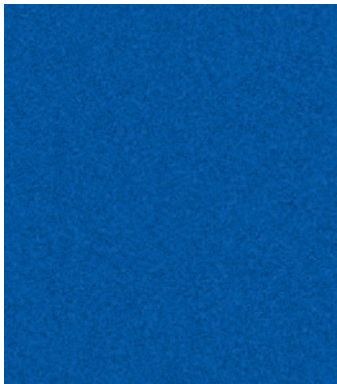
| | PREMIUM | 50TH ANNIV. | TRACK EDITION | NISMO® |
|---------------------------------|-------------------------------------|-------------------------------------|-------------------------------------|-------------------------------------|
| BLACK LEATHER | <input checked="" type="checkbox"/> | | | |
| HAI GRAY LEATHER ³ | <input type="checkbox"/> | | | |
| KURO NIGHT LEATHER ³ | <input type="checkbox"/> | | | |
| RAKUDA TAN LEATHER ³ | <input type="checkbox"/> | | | |
| RED AMBER LEATHER ³ | <input type="checkbox"/> | | | |
| 50TH ANNIVERSARY LEATHER | | <input checked="" type="checkbox"/> | | |
| BLACK/RED LEATHER | | | <input checked="" type="checkbox"/> | |
| NISMO® BLACK/RED LEATHER | | | | <input checked="" type="checkbox"/> |

| | PREMIUM | 50TH ANNIV. | TRACK EDITION | NISMO® |
|---------------------------------|-------------------------------------|-------------------------------------|-------------------------------------|-------------------------------------|
| BLACK LEATHER | <input checked="" type="checkbox"/> | | | |
| HAI GRAY LEATHER ³ | <input type="checkbox"/> | | | |
| KURO NIGHT LEATHER ³ | <input type="checkbox"/> | | | |
| RAKUDA TAN LEATHER ³ | <input type="checkbox"/> | | | |
| RED AMBER LEATHER ³ | <input type="checkbox"/> | | | |
| 50TH ANNIVERSARY LEATHER | | <input checked="" type="checkbox"/> | | |
| BLACK/RED LEATHER | | | <input checked="" type="checkbox"/> | |
| NISMO® BLACK/RED LEATHER | | | | <input checked="" type="checkbox"/> |

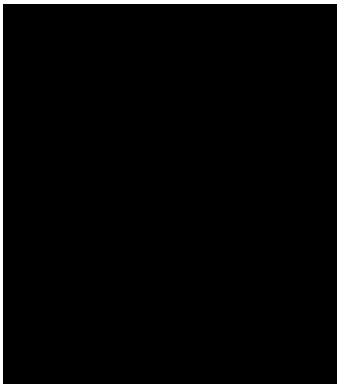
| | PREMIUM | 50TH ANNIV. | TRACK EDITION | NISMO® |
|---------------------------------|--------------------------|-------------|---------------|--------|
| BLACK LEATHER | | | | |
| HAI GRAY LEATHER ³ | | | | |
| KURO NIGHT LEATHER ³ | | | | |
| RAKUDA TAN LEATHER ³ | <input type="checkbox"/> | | | |
| RED AMBER LEATHER ³ | | | | |
| 50TH ANNIVERSARY LEATHER | | | | |
| BLACK/RED LEATHER | | | | |
| NISMO® BLACK/RED LEATHER | | | | |



Solid Red



Bayside Blue³



Jet Black Pearl

| | PREMIUM | 50TH ANNIV. | TRACK EDITION | NISMO® |
|---------------------------------|-------------------------------------|-------------|-------------------------------------|-------------------------------------|
| BLACK LEATHER | <input checked="" type="checkbox"/> | | | |
| HAI GRAY LEATHER ³ | <input type="checkbox"/> | | | |
| KURO NIGHT LEATHER ³ | <input type="checkbox"/> | | | |
| RAKUDA TAN LEATHER ³ | | | | |
| RED AMBER LEATHER ³ | | | | |
| 50TH ANNIVERSARY LEATHER | | | | |
| BLACK/RED LEATHER | | | <input checked="" type="checkbox"/> | |
| NISMO® BLACK/RED LEATHER | | | | <input checked="" type="checkbox"/> |

| | PREMIUM | 50TH ANNIV. | TRACK EDITION | NISMO® |
|---------------------------------|---------|-------------------------------------|-------------------------------------|-------------------------------------|
| BLACK LEATHER | | | | |
| HAI GRAY LEATHER ³ | | | | |
| KURO NIGHT LEATHER ³ | | | | |
| RAKUDA TAN LEATHER ³ | | | | |
| RED AMBER LEATHER ³ | | | | |
| 50TH ANNIVERSARY LEATHER | | <input checked="" type="checkbox"/> | | |
| BLACK/RED LEATHER | | | <input checked="" type="checkbox"/> | |
| NISMO® BLACK/RED LEATHER | | | | <input checked="" type="checkbox"/> |

| | PREMIUM | 50TH ANNIV. | TRACK EDITION | NISMO® |
|---------------------------------|--------------------------|-------------|-------------------------------------|-------------------------------------|
| BLACK LEATHER | <input type="checkbox"/> | | | |
| HAI GRAY LEATHER ³ | <input type="checkbox"/> | | | |
| KURO NIGHT LEATHER ³ | <input type="checkbox"/> | | | |
| RAKUDA TAN LEATHER ³ | <input type="checkbox"/> | | | |
| RED AMBER LEATHER ³ | | | | |
| 50TH ANNIVERSARY LEATHER | | | | |
| BLACK/RED LEATHER | | | <input checked="" type="checkbox"/> | |
| NISMO® BLACK/RED LEATHER | | | | <input checked="" type="checkbox"/> |

☒ Standard
☐ Optional

Nissan has taken care to ensure that the color swatches presented here are the closest possible representations of actual vehicle colors. Swatches may vary slightly due to the printing process and whether viewed in daylight, fluorescent or incandescent light. Please see the actual colors at your dealer.

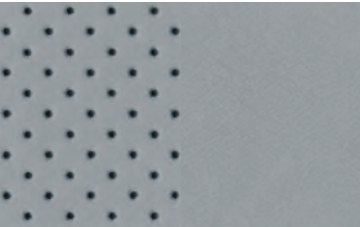
CHOOSE YOUR INTERIOR



GT-R® Premium shown in Hai Gray Semi-aniline Leather.



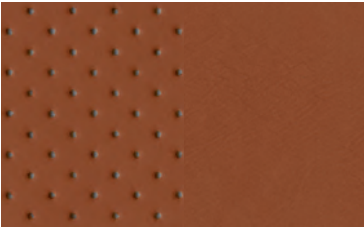
Black Leather/Synthetic-suede Inserts Premium



Hai Gray Semi-aniline Leather³ Premium Interior Package



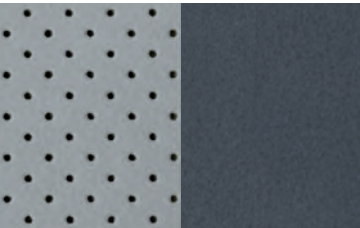
Kuro Night Semi-aniline Leather³ Premium Interior Package



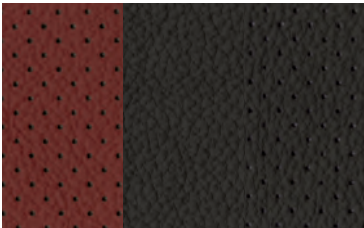
Rakuda Tan Semi-aniline Leather³ Premium Interior Package



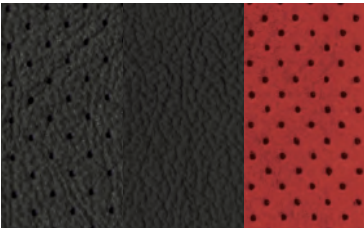
Red Amber Semi-aniline Leather³ Premium Interior Package



50th Anniversary Semi-aniline Leather 50th Anniversary



Black/Red Leather Track Edition



Black Leather/Red Synthetic-suede Inserts NISMO

CHOOSE YOUR TRIM LEVEL

PREMIUM

- 3.8-liter twin-turbocharged V6 engine
- Dual-clutch 6-speed transmission
- ATTESA E-TS® All-Wheel Drive
- 20" RAYS® forged-alloy wheels
- Dunlop® SP Sport MAXX® GT600 DSST CTT high-performance run-flat tires⁴
- Nissan/Brembo® braking system
- Bilstein® DampTronic® suspension system
- Vehicle Dynamic Control (VDC) with three driver-selectable modes⁵
- Titanium exhaust with exhaust sound control
- Multi-LED headlights with signature lighting

- NissanConnect® 8" touch-screen display⁶
- Nissan Navigation System⁷
- NissanConnect® Services powered by SiriusXM^{®6}
- Apple CarPlay^{®6}
- Driver-configurable Multi-Function Display system
- Leather-appointed front seats with synthetic suede inserts
- Bose® Premium Audio System
- 11 Speakers, including dual subwoofers
- Active Noise Cancellation
- Active Sound Enhancement

AVAILABLE PACKAGES:

- Premium Interior Package
- All-Weather Package



50TH ANNIVERSARY EDITION

- 50th Anniversary graphics and badging
- 20" 50th Anniversary RAYS® forged-alloy wheels (Bayside Blue adds blue accents on spokes)
- 50th Anniversary hand-stitched semi-aniline leather-appointed front seats with embossing

- 50th Anniversary interior treatment
- Alcantara® headliner with unique stitching and sun visors
- 50th Anniversary kick plates
- 50th Anniversary tachometer

TRACK EDITION¹

INCLUDES PREMIUM EQUIPMENT PLUS:

- NISMO®-tuned 3.8-liter twin-turbocharged V6 engine
- 20" NISMO black RAYS® forged-alloy wheels
- Dunlop® SP Sport MAXX® GT600 DSST CTT (NR1) high-performance run-flat tires⁴
- NISMO-tuned suspension
- NISMO-tuned 17.3 mm hollow rear stabilizer bar

- Body bonding to key spot welds
- Carbon-fiber roof²
- Dry carbon-fiber rear spoiler²
- Black/Red interior treatment
- Black/Red Recaro® leather-appointed front seats

AVAILABLE PACKAGE:

- Carbon Ceramic Brakes Package



NISMO®

INCLUDES PREMIUM EQUIPMENT PLUS:

- NISMO-tuned 3.8-liter twin-turbocharged V6 engine
- Nissan/Brembo® Carbon Ceramic Braking System
- NISMO-tuned suspension
- NISMO-tuned 17.3 mm hollow rear stabilizer bar
- 20" NISMO black RAYS® forged-alloy wheels
- Dunlop® SP Sport MAXX® GT600 DSST CTT (NR1) high-performance run-flat tires⁴
- Body bonding to key spot welds

- NISMO aerodynamic body design – carbon-fiber front and rear fascia, side sills, and rear spoiler²
- Carbon-fiber hood, fenders, roof, and trunk lid
- Front fender air outlets
- NISMO tachometer
- NISMO Recaro® leather-appointed front seats with red synthetic suede inserts
- NISMO Black/Red interior treatment
- NISMO Alcantara®-wrapped steering wheel and gauge hood



GENUINE NISSAN ACCESSORIES

BECAUSE YOU'RE NOT DRIVING A CAR, YOU'RE DRIVING A LEGEND

Every Genuine Nissan Accessory is custom-fit, custom-designed and durability-tested. Each one is backed by Nissan's 3-year/36,000-mile (whichever occurs first) limited warranty (if installed by dealer at the time of purchase), and can be financed when installed by dealer at time of purchase⁸.

GT-R® Genuine Branded Merchandise includes apparel, lifestyle, and sports and leisure equipment to show your passion wherever you – and your GT-R – go.

A. Premium Sport Floor Mats with Carbon-fiber Inserts

The ultimate mat for the ultimate supercar.

B. GT-R Driving Shirt

Designed with mesh knit side panels to keep you as cool as you look. To shop online for GT-R merchandise, go to Nissancollections.com.

C. Standard Tool Kit

This 7-piece kit includes a flathead screwdriver, Phillips screwdriver, pliers, two box-end wrenches, a flashlight, and a pair of gloves – all in a stylish leather case.

D. Chrome Jack with GT-R Logo

Exquisitely detailed, it will give you a lift every time you look at it.

E. GT-R Carpeted Floor Mats

Preserve and protect your GT-R.

F. Nissan Valve Stem Caps

Show your Nissan pride.

G. Wheel Locks

Keep your wheels where you want them. Designed exclusively for GT-R Track Edition and GT-R NISMO.[®]

Additional Accessories:

- Emergency Road Kit
- Air Bag Anti-theft Bolts

For more information and to shop online for GT-R Genuine Nissan Accessories, go to bit.ly/20GTR-estore



SPECIFICATIONS

| Engines | Premium | 50th Anniv. | Track Edition | NISMO® |
|--|---------|-------------|---------------|--------|
| 3.8-liter DOHC 24-valve twin-turbocharged V6 | ■ | ■ | | |
| ...565 horsepower @ 6,800 rpm | | | | |
| ...467 lb-ft of torque @ 3,300–5,800 rpm | | | | |
| NISMO-tuned 3.8-liter DOHC 24-valve twin-turbocharged V6 | | | ■ | ■ |
| ...600 horsepower @ 6,800 rpm | | | | |
| ...481 lb-ft of torque @ 3,600–5,800 rpm | | | | |
| Special 50:50 coolant mix | A | | | |

| Drivetrain | | | | |
|---|---|---|---|---|
| ATTESA E-TS® All-Wheel Drive (AWD) with patented independent rear-mounted transaxle | ■ | ■ | ■ | ■ |
| Dual-clutch 6-speed transmission with paddle shifters | ■ | ■ | ■ | ■ |
| Downshift Rev Matching | ■ | ■ | ■ | ■ |
| 1.5-way mechanical limited-slip rear differential | ■ | ■ | ■ | ■ |

| Brakes | | | | |
|---|---|---|---|---|
| Nissan/Brembo® braking system | ■ | ■ | ■ | |
| Nissan/Brembo® Carbon Ceramic Braking System | | | C | ■ |
| 15.35" front/15.0" rear two-piece floating rotors with diamond-pattern internal ventilation | ■ | ■ | ■ | |
| 16.14" front/15.35" rear carbon ceramic two-piece floating rotors with diamond-pattern internal ventilation | | | C | ■ |
| 6-piston front/4-piston rear monoblock calipers | ■ | ■ | ■ | |
| Super-rigid 6-piston front/4-piston rear monoblock calipers | | | C | ■ |
| 4-wheel Anti-lock Braking System (ABS) | ■ | ■ | ■ | ■ |
| Electronic Brake force Distribution (EBD) | ■ | ■ | ■ | ■ |

| Suspension/Steering | | | | |
|--|---|---|---|---|
| Double-wishbone front suspension with aluminum arms | ■ | ■ | ■ | ■ |
| Multi-link rear suspension with aluminum arms | ■ | ■ | ■ | ■ |
| Rigid front and rear suspension subframes, with 6-point mounting | ■ | ■ | ■ | ■ |
| Bilstein® DampTronic® suspension system | ■ | ■ | ■ | ■ |
| NISMO-tuned suspension | | | ■ | ■ |
| Hollow front and rear stabilizer bars | ■ | ■ | ■ | ■ |
| NISMO-tuned 17.3 mm hollow rear stabilizer bar | | | ■ | ■ |
| Vehicle-speed-sensitive power steering | ■ | ■ | ■ | ■ |
| 2.4 Steering-wheel turns lock-to-lock | ■ | ■ | ■ | ■ |

| Driver Assistance Technologies | | | | |
|---|---|---|---|---|
| Cruise control | ■ | ■ | ■ | ■ |
| RearView Monitor® | ■ | ■ | ■ | ■ |
| Front and Rear Sonar System ¹⁰ | ■ | ■ | ■ | ■ |
| Vehicle Dynamic Control (VDC) with three driver-selectable modes ⁵ | ■ | ■ | ■ | ■ |
| Traction Control System (TCS) | ■ | ■ | ■ | ■ |
| Hill start assist | ■ | ■ | ■ | ■ |

| Wheels/Tires | | | | |
|--|---|---|--|--|
| 20" x 9.5" front and 20" x 10.5" rear RAYS® forged-alloy wheels | ■ | | | |
| 20" x 9.5" front and 20" x 10.5" rear 50th Anniversary RAYS® forged-alloy wheels | | ■ | | |

| Wheels/Tires (continued) | Premium | 50th Anniv. | Track Edition | NISMO® |
|--|---------|-------------|---------------|--------|
| 20" x 10.0" front and 20" x 10.5" rear NISMO black RAYS® forged-alloy wheels | | | ■ | ■ |
| 255/40ZRF20 front and 285/35ZRF20 rear Dunlop® SP Sport MAXX® GT 600 DSST CTT high-performance run-flat tires ⁴ | ■ | ■ | | |
| 255/40ZRF20 front and 285/35ZRF20 rear Dunlop® SP Sport MAXX® GT 600 DSST CTT (NR1) high-performance run-flat tires ⁴ | | | ■ | ■ |
| 255/40ZRF20 front and 285/35ZRF20 rear Dunlop® SP Sport® 7010 all-season run-flat tires ⁴ | A | | | |

| Chassis | | | | |
|--------------------------------|---|---|---|---|
| Premium Midship (PM) platform | ■ | ■ | ■ | ■ |
| Hybrid unibody structure | ■ | ■ | ■ | ■ |
| Body bonding to key spot welds | | | ■ | ■ |

| Exterior Features | | | | |
|---|---|---|---|---|
| 50th Anniversary graphics and badging | | ■ | | |
| Carbon-fiber roof ² | | | ■ | ■ |
| Carbon-fiber hood, front fenders, and trunk lid | | | | ■ |
| Carbon-fiber engine chassis brace | ■ | ■ | ■ | ■ |
| Aerodynamic undertrays | ■ | ■ | ■ | ■ |
| Body-color rear spoiler | ■ | ■ | | |
| Dry carbon-fiber rear spoiler ² | | | ■ | |
| NISMO aerodynamic body design – carbon-fiber front and rear fascia, side sills, and rear spoiler ² | | | | ■ |
| Front fender air outlets | | | ■ | ■ |
| Side air vents | ■ | ■ | ■ | ■ |
| Multi-LED headlights with signature lighting | ■ | ■ | ■ | ■ |
| LED Daytime Running Lights and LED taillights | ■ | ■ | ■ | ■ |
| Titanium exhaust with exhaust sound control | ■ | ■ | ■ | ■ |

| Comfort/Convenience | | | | |
|---|---|---|---|---|
| Nissan Intelligent Key® with Push Button Ignition | ■ | ■ | ■ | ■ |
| HomeLink® Universal Transceiver | ■ | ■ | ■ | ■ |
| Dual Zone Automatic Temperature Control | ■ | ■ | ■ | ■ |
| Auto-dimming inside rearview mirror | ■ | ■ | ■ | ■ |

| Seating/Appointments | | | | |
|--|---|---|---|---|
| Leather-appointed front seats with synthetic suede inserts | ■ | | | |
| Hand-stitched semi-aniline leather-appointed front seats | P | | | |
| 50th Anniversary hand-stitched semi-aniline leather-appointed front seats with embossing | | ■ | | |
| Black/Red Recaro® leather-appointed front seats | | | ■ | |
| NISMO Recaro® leather-appointed front seats with synthetic suede inserts | | | | ■ |
| Heated front seats | ■ | ■ | ■ | ■ |
| Hand-stitched semi-aniline leather interior treatments | P | | | |
| 50th Anniversary interior treatment | | ■ | | |
| Black/Red interior treatment | | | ■ | |
| NISMO Black/Red interior treatment | | | | ■ |
| Alcantara® headliner with unique stitching and sun visors | | ■ | | |
| NISMO Alcantara®-wrapped steering wheel and gauge hood | | | | ■ |
| Aluminum-trimmed pedals | ■ | ■ | ■ | ■ |

| Infotainment | Premium | 50th Anniv. | Track Edition | NISMO® |
|---|---------|-------------|---------------|--------|
| Electronic analog instrument cluster with upshift indicator, vehicle information display, and digital gear indicator | ■ | ■ | ■ | ■ |
| 50th Anniversary tachometer | | ■ | | |
| NISMO tachometer | | | | ■ |
| Driver-configurable Multi-Function Display system with graphical readouts of vehicle and driving data displayed on a total of six screens | ■ | ■ | ■ | ■ |
| NissanConnect® 8" touch-screen display ⁶ | ■ | ■ | ■ | ■ |
| Display Commander | ■ | ■ | ■ | ■ |
| Nissan Navigation System ⁷ | ■ | ■ | ■ | ■ |
| SiriusXM® Traffic and Travel Link® with 3-month complimentary trial access ⁹ | ■ | ■ | ■ | ■ |
| NissanConnect® Services powered by SiriusXM® ⁶ | ■ | ■ | ■ | ■ |
| Voice Recognition for audio and navigation ⁷ | ■ | ■ | ■ | ■ |
| Apple CarPlay® ⁶ | ■ | ■ | ■ | ■ |
| Hands-free Text Messaging Assistant ¹¹ | ■ | ■ | ■ | ■ |
| Bluetooth® Hands-free Phone System ⁶ | ■ | ■ | ■ | ■ |
| Bose® Premium Audio System with 11 speakers, including dual subwoofers | ■ | ■ | ■ | ■ |
| Active Noise Cancellation | ■ | ■ | ■ | ■ |
| Active Sound Enhancement | ■ | ■ | ■ | ■ |
| Steering wheel-mounted audio controls | ■ | ■ | ■ | ■ |
| Speed-sensitive volume control | ■ | ■ | ■ | ■ |
| Two USB ports ¹² | ■ | ■ | ■ | ■ |
| SiriusXM® Radio with 3-month complimentary trial access ⁶ | ■ | ■ | ■ | ■ |
| HD Radio® | ■ | ■ | ■ | ■ |
| Streaming audio via Bluetooth® wireless technology ⁶ | ■ | ■ | ■ | ■ |

| Safety/Security | | | | |
|---|---|---|---|---|
| Nissan Advanced Air Bag System with dual-stage supplemental front air bags with seat belt and occupant-classification sensors ¹³ | ■ | ■ | ■ | ■ |
| Driver and front-passenger side-impact supplemental air bags ¹³ | ■ | ■ | ■ | ■ |
| Roof-mounted curtain side-impact supplemental air bags for front occupant head protection ¹³ | ■ | ■ | ■ | ■ |
| Front seat belts with pretensioners and load limiters | ■ | ■ | ■ | ■ |
| LATCH System (Lower Anchors and Tethers for CHildren) | ■ | ■ | ■ | ■ |
| Zone Body construction with front and rear crumple zones | ■ | ■ | ■ | ■ |
| Hood-buckling creases and energy-absorbing steering column | ■ | ■ | ■ | ■ |
| Tire Pressure Monitoring System (TPMS) with individual tire pressure display ¹⁴ | ■ | ■ | ■ | ■ |
| Nissan Vehicle Immobilizer System | ■ | ■ | ■ | ■ |
| Vehicle Security System | ■ | ■ | ■ | ■ |

■ Standard P Part of Premium Interior Package C Part of Carbon Ceramic Brakes Package
□ Optional A Part of All-Weather Package

PACKAGES

| |
|---|
| P Premium Interior Package Hand-stitched semi-aniline leather interior treatments Hand-stitched semi-aniline leather-appointed front seats |
|---|

| |
|---|
| A All-Weather Package Special 50:50 coolant mix Dunlop® SP Sport® 7010 all-season run-flat tires |
|---|

| |
|--|
| C Carbon Ceramic Brakes Package Nissan/Brembo® Carbon Ceramic Braking System 16.14" front/15.35" rear carbon ceramic two-piece floating rotors with diamond-pattern internal ventilation Super-rigid 6-piston front/4-piston rear monoblock calipers with racecar-inspired 3-point radial mounting |
|--|

DIMENSIONS/CAPACITIES/WEIGHTS

| Dimensions | | | |
|--------------------------|-------|----------------|---|
| Exterior – inches | | | |
| Wheelbase | 109.4 | Overall length | 185.4; 184.6 NISMO |
| Overall width | 74.6 | Overall height | 53.9 |
| Track width (front/rear) | | | 62.6/63.0; 63.0/63.0 Track Edition, NISMO |

| | | | |
|--------------------------|------|--|--|
| Aerodynamics – Cd | | | |
| Drag coefficient | 0.26 | | |

| | | | |
|---------------------------------------|-----------|---------------|-----------|
| Interior (front/rear) – inches | | | |
| Head room | 38.1/33.5 | Hip room | 54.7/44.9 |
| Leg room | 44.6/26.4 | Shoulder room | 54.3/50.0 |

| Capacities | | | | |
|------------------------|----------------|-------------------------------------|----------------------|--------------|
| Seating capacity | 4 | Interior passenger volume (cu. ft.) | 79.0 | |
| Cargo volume (cu. ft.) | 8.8 | Fuel tank (gals.) | 19.5 | |
| Curb weights (lbs.) | Premium | 50th Anniv. | Track Edition | NISMO |
| | 3,933 | 3,933 | 3,918 | 3,865 |

NISSAN ROADSIDE ASSISTANCE

Your peace of mind is on us. For 36 months or 36,000 miles, whichever comes first, your new Nissan vehicle is covered for the following:¹⁵

- Flat-tire changes
- Trip Interruption benefits
- Jump starts
- Vehicle lockouts
- Emergency fuel delivery

Follow Nissan on:



visit [NissanUSA.com/GT-R](https://www.nissanusa.com/GT-R)

PRINTED IN USA



Nissan Intelligent Mobility moves you one step ahead. In cars that feel like an extension of you, helping you see more and sense more, reacting with you, and sometimes even for you. Nissan Intelligent Mobility is about a better future – moving us to a world that's safer, more sustainable, and exciting.

¹Professional driver. Closed course. Obey all traffic laws, always drive safely and wear your seat belt. Damage resulting from racing, competitive driving, track and/or airstrip use not covered by warranty. See your New Vehicle Limited Warranty and Owner's Manual for proper vehicle operation and complete warranty details. ²Dry carbon-fiber requires specific maintenance. Please see your Owner's Manual for details. ³Extra cost option. ⁴Always use appropriate tires for weather conditions. See Owner's Manual for details. Failure to use appropriate tires could cause an accident resulting in serious injury or death. ⁵Vehicle Dynamic Control cannot prevent collisions due to abrupt steering, carelessness, or dangerous driving techniques. It should remain on when driving, except when freeing the vehicle from mud or snow. See Owner's Manual for safety information. ⁶Available services/features may be shown. Compatible connected device may be required. Only use services/features and device when safe and legal to do so. Subject to GPS and wireless network availability and connection, and system/technology limitations. Text rates/data usage/subscription may apply. Some services/features provided by companies not within Nissan or its partners' or agents' control and may be discontinued at any time. For more information, see dealer, Owner's Manual, or [NissanUSA.com/connect/important-information](https://www.nissanusa.com/connect/important-information). Terms and conditions of Subscriber Agreement apply. NissanConnect EV features are provided by Nissan North America. Sirius XM Connected Vehicle Services Inc. ("Sirius XM") partners with Nissan North America to provide NissanConnect Services powered by SiriusXM. All stated terms, disclosures and limitations of liability associated with connected vehicle services extend to Sirius XM and its affiliate, Sirius XM Radio Inc. SiriusXM is a registered trademark of Sirius XM Radio Inc. ⁷Never program while driving. GPS mapping may not be detailed in all areas or reflect current road status. ⁸Genuine Nissan Accessories are covered by Nissan's Limited Warranty on Genuine Nissan Replacement Parts, Genuine NISMO® S-Tune Parts, and Genuine Nissan Accessories for the longer of 12 months/12,000 miles (whichever occurs first) or the remaining period under the 3-year/36,000-mile (whichever occurs first) Nissan New Vehicle Limited Warranty. Terms and conditions apply. See dealer, Warranty Information Booklet, or [parts.NissanUSA.com](https://www.nissanusa.com/parts) for details. ⁹RearView Monitor may not detect every object and does not eliminate blind spots or warn of moving objects. See Owner's Manual for safety information. ¹⁰Sonar System may not detect every object. Driver should always check surroundings before driving. See Owner's Manual for safety information. ¹¹Use Hands Free Text Messaging when parked in a safe location. If you must use while driving, monitor traffic conditions and keep both hands on the steering wheel to prevent collisions. Compatible device required. Message and data rates may apply. ¹²Driving is serious business and requires your full attention. If you have to use the connected device while driving, exercise extreme caution at all times so full attention may be given to vehicle operation. ¹³Air bags are only a supplemental restraint system. Always wear your seat belt. Rear-facing child restraints should not be placed in the front-passenger's seat. All children 12 and under should ride in the rear seat properly secured in child restraints, booster seats, or seat belts according to their size. Air bags will only inflate in certain accidents. See Owner's Manual for safety information. ¹⁴Tire Pressure Monitoring System is not a substitute for regular tire pressure checks. See Owner's Manual for safety information. ¹⁵For a period of 36 months/36,000 miles from the date the vehicle is delivered to the first retail buyer or otherwise put into use, whichever is earlier. Alcantara® is a registered trademark of Alcantara S.p.A. Corporation. Apple CarPlay® is a registered trademark of Apple Inc. Bilstein® and DampTronic® are registered trademarks of ThyssenKrupp Bilstein GmbH. Bluetooth® is a registered trademark of Bluetooth SIG, Inc. Bose® is a registered trademark of The Bose Corporation. Brembo® is a registered trademark of Freni Brembo S.p.A. Dunlop® is a registered trademark of DNA Ltd. Corporation. Facebook® is a registered trademark of Facebook, Inc. HD Radio® is a registered trademark of iBiquity Digital Corporation. HomeLink® is a registered trademark of Gentex Corporation. RAYS® is a registered trademark of RAYS Engineering. Recaro® is a registered trademark of Recaro North America Inc. Siri® and Siri® Eyes Free are registered trademarks of Apple, Inc. The Sirius®, XM®, and SiriusXM® names and all related marks and logos are trademarks of Sirius XM Radio Inc. All other trademarks are the property of their respective owners. SP Sport® and SP Sport MAXX® are registered trademarks of SRI USA, Inc. Twitter® is a registered trademark of Twitter, Inc. YouTube® is a registered trademark of Google LLC. This brochure is intended for general descriptive and informational purposes only. It is subject to change and does not constitute an offer, representation or warranty (express or implied) by Nissan North America, Inc. Interested parties should confirm the accuracy of any information in this brochure as it relates to a vehicle directly with Nissan North America, Inc., before relying on it to make a purchase decision. Nissan North America, Inc., reserves the right to make changes, at any time, without prior notice, in prices, colors, materials, equipment, specifications, and models and to discontinue models or equipment. Due to continuous product development and other pre- and post-production factors, actual vehicle, materials and specifications may vary from this brochure. Some vehicles shown with optional equipment. See the actual vehicle for complete accuracy. Availability and delivery times for particular models or equipment may vary. Specifications, options and accessories may differ in Hawaii, U.S. territories and other countries. For additional information on availability, options or accessories, see your Nissan dealer or contact Nissan North America, Inc. At [NissanUSA.com](https://www.nissanusa.com), you'll find virtual product demonstrations, a way to "build your own Nissan," a dealer locator, and more information about key Nissan support services. Or if you'd prefer, call 1-800-NISSAN-3 for answers to specific questions about GT-R® or any other Nissan vehicle. The Nissan names, logos, product names, feature names, and slogans are trademarks owned by or licensed to Nissan Motor Co. Ltd. and/or its North American subsidiaries. Other trademarks and trade names are those of their respective owners. **Always wear your seat belt, and please drive responsibly.** ©2020 Nissan North America, Inc. '20 GTR. 2001106-N-6/19-60M-CGI