



SHIFT_

2013
370Z[®]



332 HP ON A MISSION.

THE FEELING OF INNOVATION.

There's a curvy road not far from town. A perfect place to hear a dual exhaust bounce 332 hp of pure adrenaline off a canyon wall. To feel the massive braking power of available 14" front discs as you set up for a tight hairpin turn. The feedback through the wheel and the seats as a dynamically balanced chassis just grips and grips and grips. A perfect downshift thanks to the world's only available rev-matching manual transmission. And somewhere along the way, find a scenic turnout, and just take in the aggressive new looks. Then fire up that legendary V6, stand on it, and you're gone. The 2013 370Z.[®]

Nissan. Innovation that excites.[™]



THE LOOK IS NEW,
THE SOUL UNCHANGED.



Nissan 370Z® Coupe shown in Pearl White with optional equipment.



CONTROL FREAKS WELCOME.

Some may say you're obsessed, but we understand – in a sports car everything has to be right. That's why you'll find the main gauges adjust with the steering column, so you always have a clear view. The center console controls are located within easy reach, and are easily identifiable by touch. There's even a uniquely bolstered driver's seat for enhanced support, knee pads on both sides of the console and anti-slip material on the seat cushion.

Nissan 370Z[®] Touring Coupe shown in Persimmon Leather with optional equipment.

**THE FEELING OF
A 7,500-RPM HEARTBEAT.**



Nissan 370Z[®] Coupe shown in Magma Red with optional equipment.

THE FEELING OF
UNLIMITED POSSIBILITIES.

Taste freedom as the breeze brushes your face. Hear the sound of 332 pure horsepower through a tuned exhaust. Embrace the sky as the Roadster folds its power top in about 20 seconds. Drop it from the cozy cockpit* or even from the outside by pushing a button on the driver's door. It's time to rev up your senses.



00:00 sec



00:04 sec



00:09 sec



00:16 sec



00:20 sec



00:21 sec



Nissan 370Z* Touring Roadster shown in Magnetic Black with optional equipment.

*Do not drive the vehicle with the top partially opened. Always make sure the top is either fully opened or closed before driving. See Owner's Manual regarding proper use.



**THE SUN, THE STARS,
EVEN SNOWFLAKES.**



Nissan 370Z[®] Touring Roadster shown in Black Cherry with optional equipment.

**THE FEELING OF A PERFECTLY
MATCHED DOWNSHIFT.**

Nissan 370Z[®] Touring Roadster shown in Wine Leather.



Legendary power. The 370Z[®] is powered by the 4th-generation VQ V6 engine. With 3.7-liter displacement for massive muscle, this 332-hp dynamo features advanced Variable Valve Event and Lift (VVEL) technology that continuously tunes valve lift and timing for quicker response and a broader torque curve, while optimizing fuel efficiency and reducing emissions. And while this extensive engineering may sound intriguing on paper, the exhilaration from idle to the 7,500-rpm redline – on the straights or through the corners – is pure magic.



A world's first. Included in the Sport Package, SynchroRev Match[®] technology – the first in any production car – monitors the 6-speed manual's clutch pedal, shift lever and vehicle speed. As you shift to a lower gear, the system will “blip” the throttle to the ideal engine rpm for a supremely smooth downshift as you let out the clutch. The system also works when upshifting to give you a smooth flow of power when accelerating.



Control at your fingertips. Want effortless cruising? Put the 7-speed automatic transmission in “D.” For a quick gear change, just pull the steering column-mounted lightweight magnesium paddle shifters. In Manual mode, you get manual-style control with a nudge of the shift lever or a pull of the paddle shifters. The transmission can even hold a gear in cornering for better balance, or downshift before a corner for more effective braking. And when a downshift is needed, Downshift Rev Matching automatically opens the throttle to match the rpm for smoother gear changes.



MAY THE G-FORCE BE WITH YOU.

Designed to conquer every corner, the Nissan 370Z® starts with a low center of gravity and a short wheelbase for quick response. Structural supports under the hood and along the body reinforce the chassis to handle the loads the suspension can dish out. Add in an enthusiast's wish list of high-performance componentry. And at every turn of the wheel, find pure joy as the 370Z® turns handling science into pure performance art.

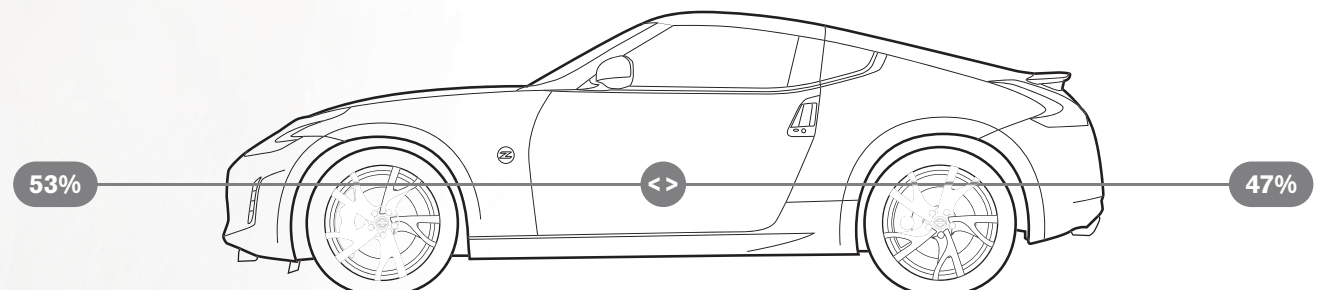
Lightweight suspension components. The lighter a suspension's components, the more quickly it can react to the driver and bumps in the road. Use of strong yet lightweight aluminum makes the Z® suspension extremely responsive. Its double-wishbone front and 4-link rear design helps to keep the tires vertical to the ground, maximizing their contact patches. Dual flow pass shocks enhance control. And super-light forged 19" alloy wheels are available for even quicker response.

4-piston brake calipers on 14" front rotors. Balance doesn't just apply to cornering. Bringing the powerful Z® to a halt are its largest brakes ever – available 14" front rotors, with the gripping power of 4-piston front calipers. Purpose-designed ducting helps to reduce fade and provide predictable and precise stopping power.



53/47 weight distribution. Some consider a static 50/50 balance to be the perfect weight distribution for handling. But Nissan engineers realized that a 53 front/47 rear static ratio is actually ideal. At the precise moment the driver accelerates out of a corner's apex, the weight distribution shifts rearward and becomes an approximate 50/50 balance. This translates into enhanced tire contact for better acceleration, quicker turns and a handling feel that's uniquely Z®.

Vehicle Dynamic Control. A great sports car shouldn't just exhilarate, it should also inspire confidence. Vehicle Dynamic Control (VDC) on the 370Z® continuously monitors the speed of each wheel, steering angle, yaw, lateral G-forces and even braking pressure. It compares the data to the steered vehicle path and, if it senses the onset of plowing (understeer) or fishtailing (oversteer), VDC brakes individual wheels and/or reduces engine power to help keep you on your steered course.¹



Nissan 370Z® Touring Coupe shown in Midnight Blue with optional equipment.

¹VDC, which should remain on when driving except when freeing the vehicle from mud or snow, cannot prevent accidents due to abrupt steering, carelessness, or dangerous driving techniques. Always drive safely.

DESIGNED FOR THE REAL WORLD.



A place for everything. While it's fun to attack your favorite twisty road, a sports car also has to function in day-in, day-out driving. To keep things orderly, the 370Z® features three cup holders, a lockable glove compartment, dash-mounted storage (not available with navigation), parcel shelves behind both seats and a handy parcel box behind the passenger seat.

Seats designed to hold you. The 370Z®'s driver seat shows how seriously we take every detail of driving. The upper seat-back has cutaway areas to help your arms move freely for steering and shifting. To let you work the pedals more easily, the lower seat cushions also feature cutaways. Along with aggressive side bolsters, the seat also features anti-slip materials to help hold you in place.

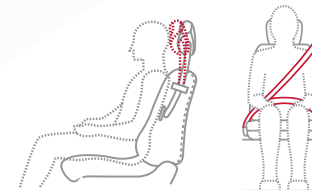


EVEN WHEN REALITY BITES.

High-performance protection. The Nissan Advanced Air Bag System includes dual-stage supplemental front air bags equipped with seat belt sensors and an occupant-classification sensor. These dual-stage air bags adjust their inflation rate, depending on the severity of impact and seat belt use. If the passenger seat is empty, a sensor actually deactivates that air bag. In addition, standard side-impact supplemental air bags are built into the seats, so they move with you as you adjust your seat. Standard curtain side-impact supplemental air bags (door-mounted on Roadster) help protect you and your passenger.¹

Seat belt technologies. Utilize pretensioners to help tighten the belt when front air bags deploy. And if your body puts too much force on the belt, load limiters give a bit.

Active Head Restraints. They help reduce the chance of whiplash injuries by moving up and forward toward your head during certain rear-end collisions.



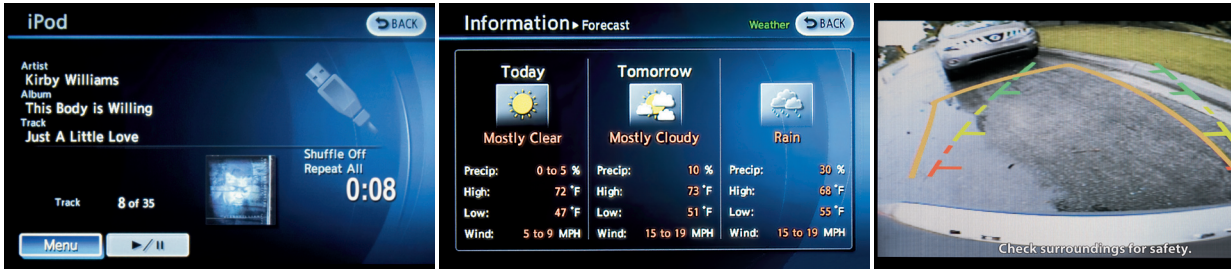
¹Air bags are only a supplemental restraint system; always wear your seat belt. Do not use rear-facing child restraints in this vehicle. All children 12 and under should be properly secured in child restraints, booster seats, or seat belts according to their size. Air bags will only inflate in certain accidents. See your Owner's Manual for more details. Inflated air bags shown for illustration purposes only; actual coverage area may differ. Air bags deflate after deployment.

EVEN THE TECHNOLOGY IS
DESIGNED TO PERFORM.

The 370Z® keeps a strong connection to your world as well as the road. With the available Bose® audio system, you've got an amazing choice of entertainment to create a soundtrack for your drive. And with the available touch-screen voice-activated Nissan Hard Drive Navigation System, you've got so much more than just directions.¹



Knowledge is king. The available Nissan Hard Drive Navigation System helps steer you clear of traffic jams, thanks to NavTraffic real-time traffic advisories.^{1,2} Hungry for more than just directions? The system also provides you with trusted ratings and reviews by *Zagat Survey*.® NavWeather service provided by SiriusXM advises you of severe weather and potentially slippery roads that could affect your drive, as well as National Weather Service warnings and 3-day weather forecasts.^{1,2} And with the available RearView Monitor, shift into “Reverse” and you get a glimpse of what’s directly behind you on the navigation system’s large 7-inch VGA screen.³



Bose® audio system. Because even the most dedicated enthusiast might want to listen to something other than its spine-tingling dual-exhaust note, the 370Z® Coupe and Roadster feature an available Bose® audio system custom-engineered for the unique shape of the interior. And your choices in entertainment are nearly limitless.

USB input. Plug your iPod® into the available USB input and you can control its functions through the audio system or touch-screen monitor, plus get song readouts on the digital display.⁴ No iPod®? No problem. You can also play digital music files from a USB flash drive.⁴

SiriusXM Satellite Radio. With 170 channels of news, sports, music and more, there's always something worth listening to. If your favorite artist is playing on one of those channels, the Z®'s audio system alerts you, and asks if you want to switch over.²

Bluetooth®. The available Bluetooth® Hands-free Phone System lets you make and receive calls through the audio system. On Z® models with the available navigation system, you can even stream music from any compatible device via Bluetooth® wire-less technology.^{1,5}

Nissan 370Z® Touring Coupe shown in Black Leather with optional equipment.

¹Never program while driving. GPS mapping may not be detailed in all areas or reflect current road regulations. ²Required SiriusXM Satellite Radio, NavTraffic and NavWeather subscriptions sold separately after trial period. Installation costs, one-time activation fee, other fees and taxes will apply. NavTraffic available in select markets. Services available only to those 18 or older in the 48 contiguous states and D.C. Fees and programming subject to change. Subscriptions governed by Customer Agreement available at siriusxm.com. ©2012 Sirius XM Radio Inc. Sirius, XM and all related marks and logos are trademarks of Sirius XM Radio Inc. ³Parking aid/convenience feature. Cannot completely eliminate blind spots. May not detect every object and does not warn of moving objects. Always check surroundings before moving vehicle. Not a substitute for proper backing procedures. Always turn to check what is behind you before backing up. ⁴Driving is serious business and requires your full attention. Do not operate any devices connected to the USB or auxiliary audio input jack while driving. ⁵Availability of specific features is dependent upon the phone's Bluetooth® support. Please refer to your phone Owner's Manual for details. The Bluetooth word mark and logos are owned by Bluetooth SIG, Inc., and any use of such marks by Nissan is under license. iPod® is a registered trademark of Apple, Inc. All rights reserved. iPod not included. Zagat Survey® is a registered trademark of Zagat Survey, LLC Ltd.

**350 HP WITH AN ATTITUDE.
THE PURPOSE-BUILT NISMO Z®**



Its name is synonymous with passion, expertise, and especially the heights of Nissan performance. NISMO puts its all into everything it builds, from championship-winning racecars and accessories for street cars to one of the world's most desirable sports cars – NISMO 370Z.® With bumped-up power and pumped-up handling, it is transformed into a sports car singularly worthy of being branded NISMO.



Competition-tuned independent suspension. Serious grip. Start with specially tuned springs, shocks and stabilizer bars designed to satisfy the most demanding enthusiast. Add extra braces on the front strut tower bar and special vibration dampers on the front body frame rail and rear subframe – the likes of which are normally found in Formula 1 cars – to make for impressive overall body rigidity and a controlled ride. Top it off with a high down-force body design, rear diffuser and 19" RAYS® forged aluminum wheels and you've got the one and only NISMO Z.®





TAKE PART IN PUBLIC DISPLAYS OF AFFECTION.

**GENUINE NISSAN ACCESSORIES.
IMPRESS. CONNECT. PROTECT. ORGANIZE.**



Every Genuine Nissan Accessory is: custom-fit, custom-designed and durability-tested; backed by Nissan's 3-year/36,000-mile limited warranty; and can be financed when installed by dealer at time of purchase.¹

A. Front Chin Aero Deflector

Less turbulence. More downforce. Looks cool, too.

B. 19" Polished Forged Alloy Wheels

One polished performer deserves another.

C. Rear Decklid Spoiler (Coupe Only)

Deck out your rear deck.

D. NISMO® Cat-back Exhaust System

More horsepower, more torque and more aggressive sound.

E. Illuminated Kick Plates (2-piece set)

A grand entry every time you get in.

F. NISMO® Rear Decklid Spoiler (Coupe Only)

To the winner go the spoilers.

G. Carpeted Trunk Mat*

Protect your Z® and your valuables.

H. Portable Cargo Organizer

A place for everything. And everything in its place.

Additional Accessories:

- Vehicle Cover
- Nose Mask
- NISMO® Suspension Kits
- NISMO® Shift Knobs
- And More

For more information on the complete line of Genuine Nissan Accessories, go to **NissanUSA.com/accessories**. Or shop online at the Nissan eStore.

Nissan 370Z® Coupe shown in Gun Metallic with 19" Polished Forged Alloy Wheels, Front Chin Aero Deflector, NISMO® Rear Decklid Spoiler and NISMO® Graphics Kit. **Nissan 370Z® Roadster** shown in Magma Red with 19" Polished Forged Alloy Wheels and Front Chin Aero Deflector.

¹Covered by Nissan's Limited Warranty on Genuine Nissan Accessories for the longer of 12 months/12,000 miles or the remaining period under the 3-year/36,000-mile Nissan New Vehicle Limited Warranty. Terms and conditions apply. See Warranty Information Booklet for details. *Cargo and load capacity limited by weight and distribution. Always secure all cargo.

NOW’S THE TIME TO GET THE 370Z® THE WAY YOU WANT IT.

TRIM BUILD




COUPE

370Z®

- 332 hp, 270 lb-ft of torque, 3.7-liter V6
- 6-speed manual transmission or 7-speed automatic transmission
- 18" Aluminum-alloy wheels
- High-performance W-rated tires
- High Intensity Discharge (HID) bi-functional xenon headlights

KEY AVAILABLE PACKAGE:

- Sport Package



370Z® Touring

INCLUDES 370Z® EQUIPMENT PLUS:

- Leather-appointed power heated seats with synthetic suede inserts
- Driver’s adjustable lumbar support
- Bose® audio system with eight speakers, including two subwoofers

KEY AVAILABLE PACKAGES:

- Sport Package
- Navigation Package

- SiriusXM Satellite Radio¹
- Bluetooth® Hands-free Phone System²
- Aluminum-trimmed pedals
- Auto-dimming rearview mirror
- HomeLink® Universal Transceiver



NISMO





INCLUDES 370Z® EQUIPMENT PLUS:

- 350 hp, 276 lb-ft of torque, 3.7-liter V6
- 6-speed manual transmission with SynchroRev Match®
- Viscous limited-slip rear differential
- NISMO-tuned free-flow dual exhaust with H-pipe configuration
- Nissan sport brakes – 14.0" 4-piston front brakes/13.8" 2-piston rear brakes
- High-rigidity brake hoses and R35 Special II brake fluid

KEY AVAILABLE PACKAGE:

- Bose® Package

- 19" NISMO forged alloy wheels by RAYS®
- Yokohama® ADVAN Sport® Y-rated tires
- NISMO-tuned suspension
- Reinforced front strut tower brace
- Performance body dampers
- NISMO aerodynamic body design
- Signature NISMO interior trim


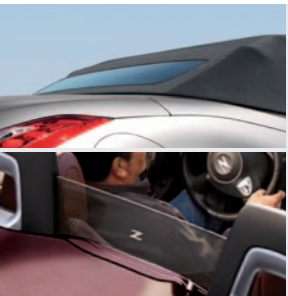


ROADSTER

370Z®

- 332 hp, 270 lb-ft of torque, 3.7-liter V6
- 7-speed automatic transmission
- 18" Aluminum-alloy wheels
- High-performance W-rated tires
- Power convertible soft-top with glass window
- Rear glass wind deflector
- Power moving tonneau cover

- High Intensity Discharge (HID) bi-functional xenon headlights
- LED Daytime Running Lights
- LED illuminated Z® side marker emblems
- Nissan Intelligent Key® with Push Button Ignition
- Six standard air bags



370Z® Touring

INCLUDES 370Z® EQUIPMENT PLUS:

- Ventilated leather-appointed power heated and cooling seats
- Driver’s adjustable lumbar support
- Bose® audio system with eight speakers, including two subwoofers

KEY AVAILABLE PACKAGES:

- Sport Package
- Navigation Package




- SiriusXM Satellite Radio¹
- Bluetooth® Hands-free Phone System²
- Aluminum-trimmed pedals
- Auto-dimming rearview mirror
- HomeLink® Universal Transceiver



SPORT PACKAGE DETAILS

- Euro-tuned sport shock absorbers
- Nissan sport brakes – 4-piston opposed aluminum calipers with 14.0" x 1.30" vented front discs and 2-piston opposed aluminum calipers with 13.8 x 0.80" vented rear brakes
- SynchroRev Match® (manual transmission only)

- Viscous limited-slip differential
- 19" RAYS® forged alloy wheels
- 245/40R19 and 275/35WR19 Bridgestone® Potenza® high-performance tires
- Front chin aero deflector (Coupe only)
- Body-color rear spoiler (Coupe only)



This package is not available on NISMO and Roadster 370Z® models.

¹Required SiriusXM Satellite Radio, NavTraffic and NavWeather subscriptions sold separately after trial period. Installation costs, one-time activation fee, other fees and taxes will apply. NavTraffic available in select markets. Services available only to those 18 or older in the 48 contiguous states and D.C. Fees and programming subject to change. Subscriptions governed by Customer Agreement available at siriusxm.com. ©2012 Sirius XM Radio Inc. Sirius, XM and all related marks and logos are trademarks of Sirius XM Radio Inc. ²Availability of specific features is dependent upon the phone's Bluetooth® support. Please refer to your phone Owner's Manual for details. The Bluetooth word mark and logos are owned by Bluetooth SIG, Inc., and any use of such marks by Nissan is under license. Bose® is a registered trademark of The Bose Corporation. Bridgestone® and Potenza® are registered trademarks of Bridgestone Corporation. HomeLink® is a registered trademark of Johnson Controls Technology Company. RAYS® is a registered trademark of RAYS Engineering. Yokohama® and ADVAN Sport® are a registered trademarks of The Yokohama Tire Corporation.

SPECIFICATIONS

Engine	370Z [*]	370Z [*] TOURING	NISMO ^o
VQ37VHR – 3.7-liter DOHC 24-valve V6 aluminum-alloy engine ¹	<div></div>	<div></div>	<div></div>
Horsepower – 332 hp @ 7,000 rpm	<div></div>	<div></div>	<div></div>
350 hp @ 7,400 rpm	<div></div>	<div></div>	<div></div>
Torque – 270 lb-ft @ 5,200 rpm	<div></div>	<div></div>	<div></div>
276 lb-ft @ 5,200 rpm	<div></div>	<div></div>	<div></div>
Bore and stroke – 95.5 x 86.0	<div></div>	<div></div>	<div></div>
Compression ratio – 11:1	<div></div>	<div></div>	<div></div>
Maximum engine speed – 7,500 rpm	<div></div>	<div></div>	<div></div>
Emissions – Tier2-Bin5 (Fed); LEV2-ULEV (CA)	<div></div>	<div></div>	<div></div>
Continuously Variable Valve Timing Control System (CVTCS)	<div></div>	<div></div>	<div></div>
with Variable Valve Event and Lift (VVEL) on intake valves	<div></div>	<div></div>	<div></div>
Twin-intake system	<div></div>	<div></div>	<div></div>
Nissan Direct Ignition System with iridium-tipped spark plugs	<div></div>	<div></div>	<div></div>
Electronic drive-by-wire throttle	<div></div>	<div></div>	<div></div>
NISMO-tuned free-flow dual exhaust with H-pipe configuration	<div></div>	<div></div>	<div></div>

Drivetrain			
Longitudinally mid-mounted front engine/Rear-Wheel Drive	<div></div>	<div></div>	<div></div>
Carbon-fiber composite driveshaft	<div></div>	<div></div>	<div></div>
6-speed close-ratio manual transmission	<div>²</div>	<div></div>	<div></div>
SynchroRev Match ^o (manual transmission)	<div><div>S</div>²</div>	<div><div>S</div></div>	<div></div>
7-speed automatic transmission with manual shift	<div></div>	<div></div>	<div></div>
mode, paddle shifters and Downshift Rev Matching	<div><div></div>²<div>³</div></div>	<div><div></div></div>	<div></div>
Viscous limited-slip rear differential	<div><div>S</div>²</div>	<div><div>S</div></div>	<div></div>

Brakes			
12.6" x 1.10" vented front discs and 12.6" x 0.63" vented rear discs	<div></div>	<div></div>	<div></div>
Nissan sport brakes – 4-piston opposed aluminum calipers	<div></div>	<div></div>	<div></div>
with 14.0" x 1.30" vented front discs and 2-piston opposed aluminum calipers with 13.8" x 0.80" vented rear discs	<div><div>S</div>²</div>	<div><div>S</div></div>	<div></div>
High-rigidity brake hoses and R35 Special II brake fluid	<div></div>	<div></div>	<div></div>
4-wheel Anti-lock Braking System (ABS)	<div></div>	<div></div>	<div></div>
Electronic Brake force Distribution (EBD)	<div></div>	<div></div>	<div></div>
Brake Assist	<div></div>	<div></div>	<div></div>

Suspension/Chassis Bracing/Steering			
2-link double-wishbone aluminum-alloy front suspension	<div></div>	<div></div>	<div></div>
with aluminum subframe	<div></div>	<div></div>	<div></div>
4-link aluminum-alloy rear suspension	<div></div>	<div></div>	<div></div>
Front and rear stabilizer bars	<div></div>	<div></div>	<div></div>
NISMO-tuned suspension with increased spring, dampening	<div></div>	<div></div>	<div></div>
and stabilizer rates	<div></div>	<div></div>	<div></div>
Ripple-control shock absorbers	<div></div>	<div></div>	<div></div>
Euro-tuned sport shock absorbers	<div><div>S</div>²</div>	<div><div>S</div></div>	<div></div>
3-point front strut tower brace	<div></div>	<div></div>	<div></div>
NISMO reinforced 3-point front strut tower brace	<div></div>	<div></div>	<div></div>
Rear underbody V-brace	<div></div>	<div></div>	<div></div>
NISMO front and rear performance body dampers	<div></div>	<div></div>	<div></div>
Vehicle-speed-sensitive power steering	<div></div>	<div></div>	<div></div>

<div></div> Standard	<div><div>S</div></div> Sport Package	<div><div>B</div></div> Bose [®] Package
<div></div> Optional	<div><div>N</div></div> Navigation Package	

Wheels/Tires	370Z [*]	370Z [*] TOURING	NISMO ^o
18" x 8.0" (front)/18" x 9.0" (rear) aluminum-alloy wheels	<div></div>	<div></div>	<div></div>
19" x 9.0" (front)/19" x 10.0" forged alloy wheels by RAYS [®]	<div><div>S</div>²</div>	<div><div>S</div></div>	<div></div>
19" x 9.5" (front)/19" x 10.5" (rear) NISMO forged alloy wheels by RAYS [®]	<div></div>	<div></div>	<div></div>
225/50WR18 (front) and 245/45WR18 (rear) Yokohama [®]	<div></div>	<div></div>	<div></div>
ADVAN Sport [®] high-performance tires	<div><div></div>²</div>	<div><div></div>²</div>	<div></div>
225/50WR18 (front) and 245/45WR18 (rear) Bridgestone [®]	<div></div>	<div></div>	<div></div>
Potenza [®] high-performance tires	<div><div></div>³</div>	<div><div></div>³</div>	<div></div>
245/40WR19 (front) and 275/35WR19 (rear) Bridgestone [®]	<div></div>	<div></div>	<div></div>
Potenza [®] high-performance tires	<div><div>S</div>²</div>	<div><div>S</div></div>	<div></div>
245/40YR19 (front) and 285/35YR19 (rear) Yokohama [®]	<div></div>	<div></div>	<div></div>
ADVAN Sport [®] high-performance tires	<div></div>	<div></div>	<div></div>
Temporary spare tire	<div><div></div>²<div><div></div>³</div></div>	<div><div></div>²<div><div></div>³</div></div>	<div></div>

Exterior Features			
Automatic on/off headlights	<div></div>	<div></div>	<div></div>
High Intensity Discharge (HID) bi-functional xenon headlights	<div></div>	<div></div>	<div></div>
LED Daytime Running Lights	<div></div>	<div></div>	<div></div>
LED taillights	<div></div>	<div></div>	<div></div>
LED illuminated Z [®] side marker emblems	<div></div>	<div></div>	<div></div>
Front chin aero deflector	<div><div>S</div>²</div>	<div><div>S</div>²</div>	<div></div>
Body-color rear spoiler	<div><div>S</div>²</div>	<div><div>S</div></div>	<div></div>
NISMO aerodynamic body design – front and rear fascia, spoiler side sills and rear spoiler	<div></div>	<div></div>	<div></div>
Aluminum hood, doors and hatch/trunk	<div></div>	<div></div>	<div></div>
Body-color dual power heated outside mirrors	<div></div>	<div></div>	<div></div>
UV-reducing solar glass	<div></div>	<div></div>	<div></div>
Rear window defroster	<div></div>	<div></div>	<div></div>
Power convertible soft-top with glass window	<div><div></div>³</div>	<div><div></div>³</div>	<div></div>
Rear wind deflector and power moving storage cover	<div><div></div>³</div>	<div><div></div>³</div>	<div></div>

Comfort/Convenience			
Nissan Hard Drive Navigation System with 7-inch VGA touch-screen monitor and voice recognition	<div></div>	<div><div>N</div></div>	<div></div>
NavTraffic [®] and NavWeather [®] provided by SiriusXM [®]	<div></div>	<div><div>N</div></div>	<div></div>
Zagat Survey [®] restaurant reviews	<div></div>	<div><div>N</div></div>	<div></div>
RearView Monitor	<div></div>	<div><div>N</div></div>	<div></div>
Nissan Intelligent Key [®] with Push Button Ignition	<div></div>	<div></div>	<div></div>
Automatic Temperature Control (ATC) with in-cabin microfilter	<div></div>	<div></div>	<div></div>
Bluetooth [®] Hands-free Phone System [®]	<div></div>	<div></div>	<div></div>
3-bay gauge cluster (oil temperature, voltmeter and digital clock)	<div></div>	<div></div>	<div></div>
Fine Vision electroluminescent gauges with multi-function	<div></div>	<div></div>	<div></div>
drive computer	<div></div>	<div></div>	<div></div>
NISMO tachometer	<div></div>	<div></div>	<div></div>
Upshift indicator light	<div></div>	<div></div>	<div></div>
Power windows with one-touch auto-up/down feature	<div></div>	<div></div>	<div></div>
Power door locks with auto-locking feature	<div></div>	<div></div>	<div></div>
Remote windows down	<div></div>	<div></div>	<div></div>
Key-operated windows up/down	<div></div>	<div></div>	<div></div>

Comfort/Convenience (continued)	370Z [*]	370Z [*] TOURING	NISMO ^o
Illuminated steering wheel-mounted cruise control	<div></div>	<div></div>	<div></div>
HomeLink [®] Universal Transceiver	<div></div>	<div></div>	<div></div>
12-volt DC power outlets (two) and map lights	<div></div>	<div></div>	<div></div>
Tilt steering column with integrated gauges	<div></div>	<div></div>	<div></div>
Variable intermittent windshield wipers	<div></div>	<div></div>	<div></div>
Auto-dimming rearview mirror	<div></div>	<div></div>	<div></div>
Dual illuminated visor vanity mirrors	<div></div>	<div></div>	<div></div>
Sun visor extenders	<div><div></div>²</div>	<div><div></div>²</div>	<div></div>
Cup holders (three) and lockable glove compartment	<div></div>	<div></div>	<div></div>
Dash-mounted storage (N/A with navigation)	<div></div>	<div></div>	<div></div>
Parcel shelves (behind seats)	<div></div>	<div></div>	<div></div>
Parcel box (behind passenger seat)	<div></div>	<div></div>	<div></div>
Rear cargo cover	<div></div>	<div><div></div>²</div>	<div></div>

Seating/Appointments			
Cloth seat trim	<div></div>	<div></div>	<div></div>
NISMO-embroidered cloth seats with red stitching	<div></div>	<div></div>	<div></div>
Leather-appointed sport seats	<div></div>	<div><div></div>²</div>	<div></div>
Ventilated leather-appointed sport seats	<div></div>	<div><div></div>³</div>	<div></div>
8-way adjustable driver's seat	<div></div>	<div></div>	<div></div>
4-way adjustable passenger's bucket seat	<div></div>	<div></div>	<div></div>
Power seats	<div></div>	<div></div>	<div></div>
Heated seats (Roadster also includes cooling)	<div></div>	<div></div>	<div></div>
Driver's adjustable lumbar support	<div></div>	<div></div>	<div></div>
Driver-shaped bucket seat with thigh support	<div></div>	<div></div>	<div></div>
Driver and passenger knee support	<div></div>	<div></div>	<div></div>
Synthetic suede door panel inserts	<div></div>	<div></div>	<div></div>
Leather-wrapped steering wheel, shift knob and parking brake lever	<div></div>	<div></div>	<div></div>
NISMO smooth leather-wrapped steering wheel and shift knob	<div></div>	<div></div>	<div></div>
NISMO plaque of authenticity with serial number and model-year designation	<div></div>	<div></div>	<div></div>
Aluminum-trimmed pedals	<div></div>	<div></div>	<div></div>
NISMO signature red interior stitching	<div></div>	<div></div>	<div></div>

Audio/Entertainment			
AM/FM/CD audio system	<div></div>	<div></div>	<div></div>
Bose [®] audio system with AM/FM/in-dash 6-CD changer	<div></div>	<div></div>	<div></div>
Four speakers	<div></div>	<div></div>	<div></div>
Eight speakers, including dual subwoofers	<div></div>	<div></div>	<div></div>
SiriusXM Satellite Radio [®]	<div></div>	<div></div>	<div></div>
MP3/WMA CD playback capability	<div></div>	<div></div>	<div></div>
Auxiliary audio input jack	<div></div>	<div></div>	<div></div>
Auxiliary audio/video input jacks (this feature replaces auxiliary audio input jack located on head unit)	<div></div>	<div><div>N</div></div>	<div></div>
USB connection port for iPod [®] interface and other compatible devices	<div></div>	<div><div>N</div></div>	<div></div>
Streaming audio via Bluetooth [®] wireless technology [®]	<div></div>	<div><div>N</div></div>	<div></div>
DVD video playback capability	<div></div>	<div><div>N</div></div>	<div></div>
Radio Data System (RDS)	<div></div>	<div></div>	<div></div>
Speed-sensitive volume control	<div></div>	<div></div>	<div></div>
Illuminated steering-wheel-mounted audio controls	<div></div>	<div></div>	<div></div>

This brochure is intended for general descriptive and informational purposes only. It is subject to change and does not constitute an offer, representation or warranty (express or implied) by Nissan North America, Inc. Interested parties should confirm the accuracy of any information in this brochure as it relates to a vehicle directly with Nissan North America, Inc., before relying on it to make a purchase decision. Nissan North America, Inc., reserves the right to make changes, at any time, without prior notice, in prices, colors, materials, equipment, specifications, and models and to discontinue models or equipment. Due to continuous product development and other pre- and post-production factors, actual vehicle, materials and specifications may vary from this brochure. Some vehicles shown with optional equipment. See the actual vehicle for complete accuracy. Availability and delivery times for particular models or equipment may vary. Specifications, options and accessories may differ in Hawaii, U.S. territories and other countries. For additional information on availability, options or accessories, see your Nissan dealer or contact Nissan North America, Inc.

Safety/Security	370Z [*]	370Z [*] TOURING	NISMO ^o
Nissan Advanced Air Bag System (AABS) with dual-stage supplemental front air bags with seat belt and occupant-classification sensors [®]	<div></div>	<div></div>	<div></div>
Driver and passenger seat-mounted side-impact supplemental air bags	<div></div>	<div></div>	<div></div>
Roof-mounted curtain side-impact supplemental air bags for occupants head protection	<div></div>	<div></div>	<div></div>
Door-mounted curtain side-impact supplemental air bags for occupants head protection	<div><div></div>²</div>	<div><div></div>²</div>	<div></div>
Vehicle Dynamic Control (VDC) with Traction Control System (TCS)	<div></div>	<div></div>	<div></div>
Seat belts with pretensioners and load limiters (3-point ALR/ ELR passenger seat belt system)	<div></div>	<div></div>	<div></div>
Active Head Restraints	<div></div>	<div></div>	<div></div>
Energy-absorbing steering column	<div></div>	<div></div>	<div></div>
Zone Body construction with front and rear crumple zones	<div></div>	<div></div>	<div></div>
Hood-buckling creases	<div></div>	<div></div>	<div></div>
Aluminum side-door guard beams	<div></div>	<div></div>	<div></div>
Tire Pressure Monitoring System (TPMS)	<div></div>	<div></div>	<div></div>
Nissan Vehicle Immobilizer System	<div></div>	<div></div>	<div></div>
Vehicle Security System (VSS)	<div></div>	<div></div>	<div></div>

PACKAGES

<div><div>S</div></div> Sport Package
Euro-tuned sport shock absorbers, Nissan sport brakes – 4-piston opposed aluminum calipers with 14.0" x 1.30" vented front discs and 2-piston opposed aluminum calipers with 13.8" x 0.80" vented rear discs, SynchroRev Match (manual transmission only), Viscous limited-slip rear differential, 19" RAYS [®] forged alloy wheels, 245/40WR19 and 275/35WR19 Bridgestone [®] Potenza [®] high-performance tires, Front chin aero deflector (Coupe only), Body-color rear spoiler (Coupe only)
This package is not available on NISMO and Roadster 370Z [®] models.

<div><div>N</div></div> Navigation Package (Touring Models only)
Nissan Hard Drive Navigation System with 7-inch VGA touch-screen monitor and voice recognition, NavTraffic [®] and NavWeather [®] provided by SiriusXM [®] ; <i>Zagat Survey[®]</i> restaurant reviews, RearView Monitor, USB connection port for iPod [®] interface and other compatible devices, Streaming audio via Bluetooth [®] wireless technology [®] ; DVD video playback capability, Auxiliary audio/video input jacks (this feature replaces auxiliary audio input jack on head unit)
This package deletes the in-dash 6-CD changer.

<div><div>B</div></div> Bose[®] Package (NISMO Models only)
Bose [®] audio system with AM/FM/in-dash 6-CD changer, MP3/WMA CD playback capability, Eight speakers, including dual subwoofers, Radio Data System (RDS) and speed-sensitive volume control, SiriusXM Satellite Radio [®] and Bluetooth [®] Hands-free Phone System [®] ; HomeLink [®] Universal Transceiver with auto-dimming rearview mirror

¹Premium fuel required. ²Coupe only. ³Roadster only. ⁴Required SiriusXM Satellite Radio, NavTraffic and NavWeather subscriptions sold separately after trial period. Installation costs, one-time activation fee, other fees and taxes will apply. NavTraffic available in select markets. Services available only to those 18 or older in the 48 contiguous states and D.C. Fees and programming subject to change. Subscriptions governed by Customer Agreement available at siriusxm.com. ©2012 Sirius XM Radio Inc. Sirius, XM and all related marks and logos are trademarks of Sirius XM Radio Inc. ⁵Availability of specific features is dependent upon the phone's Bluetooth[®] support. Please refer to your phone's Owner's Manual for details. The Bluetooth word mark and logos are owned by Bluetooth SIG, Inc., and any use of such marks by Nissan is under license. Bose[®] is a registered trademark of The Bose Corporation. Bridgestone[®] and Potenza[®] are registered trademarks of Bridgestone Corporation. HomeLink[®] is a registered trademark of Johnson Controls Technology Corporation. RAYS[®] is a registered trademark of RAYS Engineering. iPod[®] is a registered trademark of Apple, Inc. All rights reserved. iPod not included. Yokohama[®] and ADVAN Sport[®] are registered trademarks of The Yokohama Tire Corporation. Zagat Survey[®] is a registered trademark of Zagat Survey, LLC Ltd.

DIMENSIONS/CAPACITIES/WEIGHTS/MPG

Dimensions	
Exterior – inches	
Wheelbase	100.4
Overall length	167.2 (173.4 NISMO)
Overall width	72.6
Overall height	51.8 (up to 52.2 on Roadster)
Track width (front/rear)	
18" Aluminum-alloy wheels	61.0/62.8
19" RAYS® forged wheels	60.6/61.6
19" NISMO/RAYS® forged wheels	61.2/62.2
Aerodynamics – Cd	
Drag coefficient:	.30 on Coupe; .29 with Sport Pkg .33 on Roadster; .34 with Sport Pkg

Interior – inches	
Head room	38.2 (38.7 on Roadster)
Leg room	42.9
Hip room	54.6
Shoulder room	54.4

Capacities	
Seating capacity	2
Interior volume (cu. ft.)	51.6 (52.3 on Roadster)
Cargo volume (cu. ft.)	6.9 (4.2 on Roadster)
Fuel tank (gals.)	19.0

Curb Weights – Lbs			
Base total	370Z®	370Z® TOURING	NISMO
Coupe			
Manual transmission	3,272	3,318	3,340
Automatic transmission	3,309	3,353	N/A
Roadster			
Manual transmission	N/A	3,488	N/A
Automatic transmission	3,470	3,510	N/A
Weight distribution	54/46	54/46	54/46
Weight distribution (with passengers)	53/47	53/47	53/47

2013 EPA Fuel Economy Estimates			
City/Hwy MPG	370Z®	370Z® TOURING	NISMO
Coupe			
Manual transmission	18/26	18/26	18/26
Automatic transmission	19/26	18/26	N/A
Roadster			
Manual transmission	N/A	17/24	N/A
Automatic transmission	18/25	18/25	N/A
— N/A – Not Applicable. Actual mileage may vary with driving conditions – use for comparison only. —			

Buying and owning a Nissan is like driving one: quick, convenient, confidence-inspiring.



Nissan Motor Acceptance Corporation. Whether you're buying or leasing, you'll find attractive rates and flexible terms to make your purchase more accessible.

New Vehicle Limited Warranties. Protection for your new Nissan includes 3-year/36,000-mile basic coverage and 5-year/60,000-mile powertrain coverage. Terms, conditions and exclusions apply. See Warranty Information Booklet for complete details.

Security+Plus.® For additional peace of mind, a variety of extended service plans lets you tailor the coverage to your driving habits.

Maintenance+Plus.® This extended plan ensures your Nissan will receive up to 17 different services and over 33 different inspection items at each visit, using the most up-to-date diagnostic equipment available.

Genuine Nissan Parts. When it comes time for service, any necessary replacement parts will be made using Genuine Nissan new or remanufactured parts, or Nissan-approved parts. And they're the only parts to carry Nissan's factory-backed limited warranty.

Nissan's philosophy toward the environment, "Seeking a symbiosis of people, vehicles and nature," describes our ideal for a sustainable mobile society, now and in the future. We launched the Nissan Green Program with specific objectives to realize this goal, and we are pursuing it energetically. For more information, log on to NissanUSA.com/green



FABRIC SELECTIONS

CLOTH (COUPE/ROADSTER)



BLACK



BLACK/RED

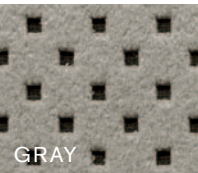


NISMO CLOTH (COUPE)

LEATHER (COUPE)



PERSIMMON



GRAY



BLACK



WINE



GRAY



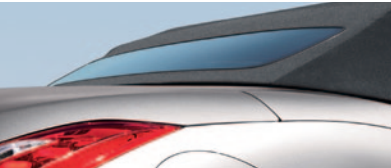
BLACK



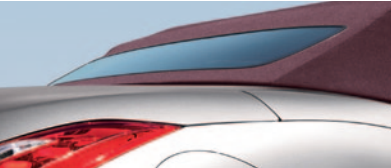
LEATHER (ROADSTER)

At **NissanUSA.com**, you'll find virtual product demonstrations, a way to "build your own Nissan," a dealer locator, and more information about key Nissan support services. Or if you'd prefer, call **1-800-NISSAN-3** for answers to specific questions about 370Z® or any other Nissan vehicle. The Nissan names, logos, product names, feature names, and slogans are trademarks owned by or licensed to Nissan Motor Co. Ltd. and/or its North American subsidiaries. **Always wear your seat belt, and please don't drink and drive.**
©2012 Nissan North America, Inc. '13 370Z® 1312335N-6/12-100M-CGI.

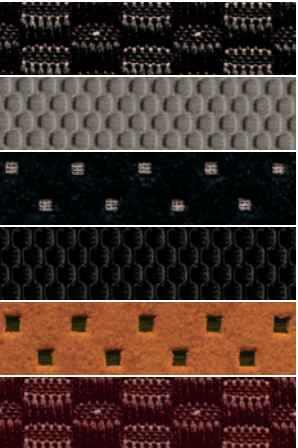
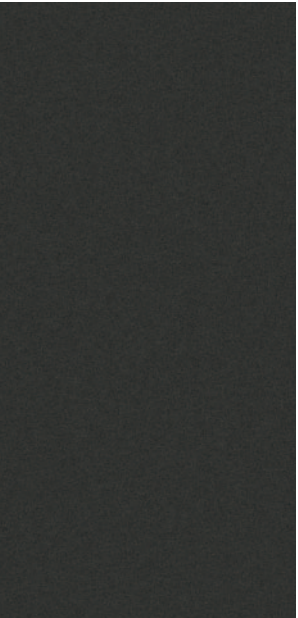
PAINT SELECTIONS



Black Top available with Black Cloth, Gray Leather or Black Leather



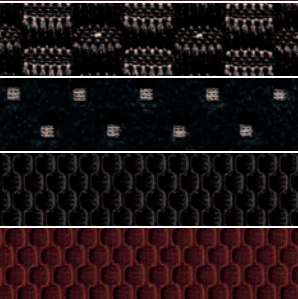
Bordeaux Top available with Wine Leather



Magnetic Black G41



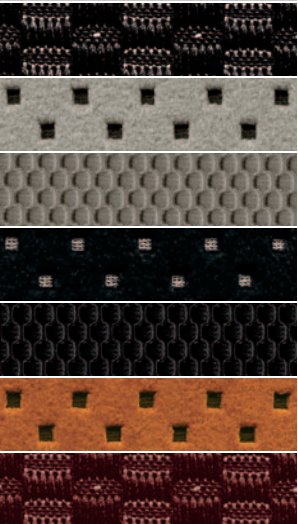
Solid Red A54



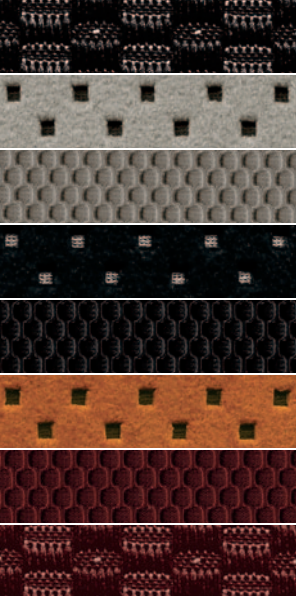
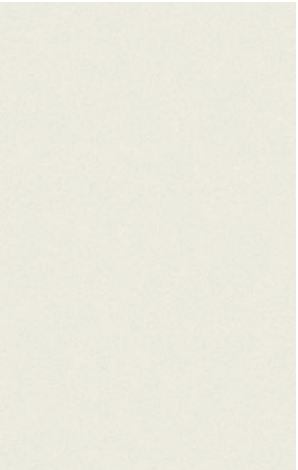
Black Cherry NAG



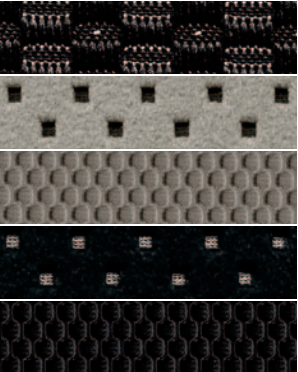
Magma Red NAM



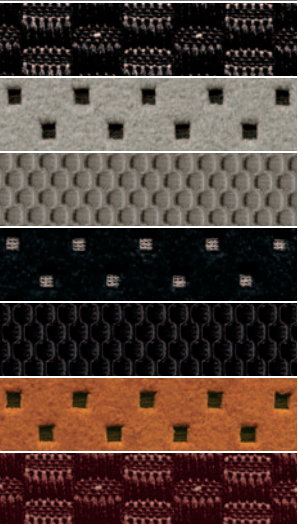
Brilliant Silver K23



Pearl White QAB



Midnight Blue RAA



Gun Metallic KAD

■ Standard

Nissan has taken care to ensure that the color swatches presented here are the closest possible representations of actual vehicle colors. Swatches may vary slightly due to the printing process and whether viewed in daylight, fluorescent or incandescent light. Please see the actual colors at your local Nissan dealer.

	370Z [*]	TOUR	NISMO
BLACK CLOTH	■		
GRAY LEATHER		■ ¹	
BLACK LEATHER		■	
PERSIMMON LEATHER		■ ²	
WINE LEATHER			
NISMO BLACK/RED CLOTH			■

	370Z [*]	TOUR	NISMO
BLACK CLOTH	■		
GRAY LEATHER		■ ¹	
BLACK LEATHER		■	
PERSIMMON LEATHER			
WINE LEATHER			
NISMO BLACK/RED CLOTH			

	370Z [*]	TOUR	NISMO
BLACK CLOTH	■		
GRAY LEATHER			
BLACK LEATHER		■	
PERSIMMON LEATHER			
WINE LEATHER		■ ¹	
NISMO BLACK/RED CLOTH			

	370Z [*]	TOUR	NISMO
BLACK CLOTH	■		
GRAY LEATHER		■ ¹	
BLACK LEATHER		■	
PERSIMMON LEATHER			
WINE LEATHER			
NISMO BLACK/RED CLOTH			■

	370Z [*]	TOUR	NISMO
BLACK CLOTH	■		
GRAY LEATHER		■	
BLACK LEATHER		■	
PERSIMMON LEATHER		■ ²	
WINE LEATHER		■ ¹	
NISMO BLACK/RED CLOTH			■

	370Z [*]	TOUR	NISMO
BLACK CLOTH	■		
GRAY LEATHER		■	
BLACK LEATHER		■	
PERSIMMON LEATHER		■ ²	
WINE LEATHER		■ ¹	
NISMO BLACK/RED CLOTH			■

	370Z [*]	TOUR	NISMO
BLACK CLOTH	■		
GRAY LEATHER		■	
BLACK LEATHER		■	
PERSIMMON LEATHER			
WINE LEATHER			
NISMO BLACK/RED CLOTH			

	370Z [*]	TOUR	NISMO
BLACK CLOTH	■		
GRAY LEATHER		■	
BLACK LEATHER		■	
PERSIMMON LEATHER		■ ²	
WINE LEATHER			
NISMO BLACK/RED CLOTH			■

¹Roadster only. ²Coupe only.

Nissan. Innovation that excites.™

NISSAN 370Z®

Shouldn't you drive something you love? Absolutely. And that's what inspires our innovation. We look at every part of your drive and ask how can we make this better, smarter and more fun. So when you get in your new Z,® you'll feel how exciting the answers can be:

SynchroRev Match.® The world's first rev-matching manual transmission puts a seamless downshift in the palm of your hand every time – helping to keep the chassis balanced in enthusiastic driving.

Variable Valve Event and Lift (VVEL) technology for quicker response and a broader torque curve. 332 horsepower has never been more exhilarating.

Lightweight aluminum suspension components and super-light forged alloy wheels give you quick response and impressive grip while helping provide a smooth, controlled ride.

Integrated gauge pod. The main instrument cluster adjusts with the steering column, so you always have a clear view of the gauges.

Los folletos de Nissan también están disponibles en español. Para descargar el PDF, visita:
NissanUSA.com/folletos-espanol

And follow Nissan on:



SHIFT_

visit NissanUSA.com/370Z

Facebook® is a registered trademark of Facebook, Inc. YouTube® is a registered trademark of Google Inc.