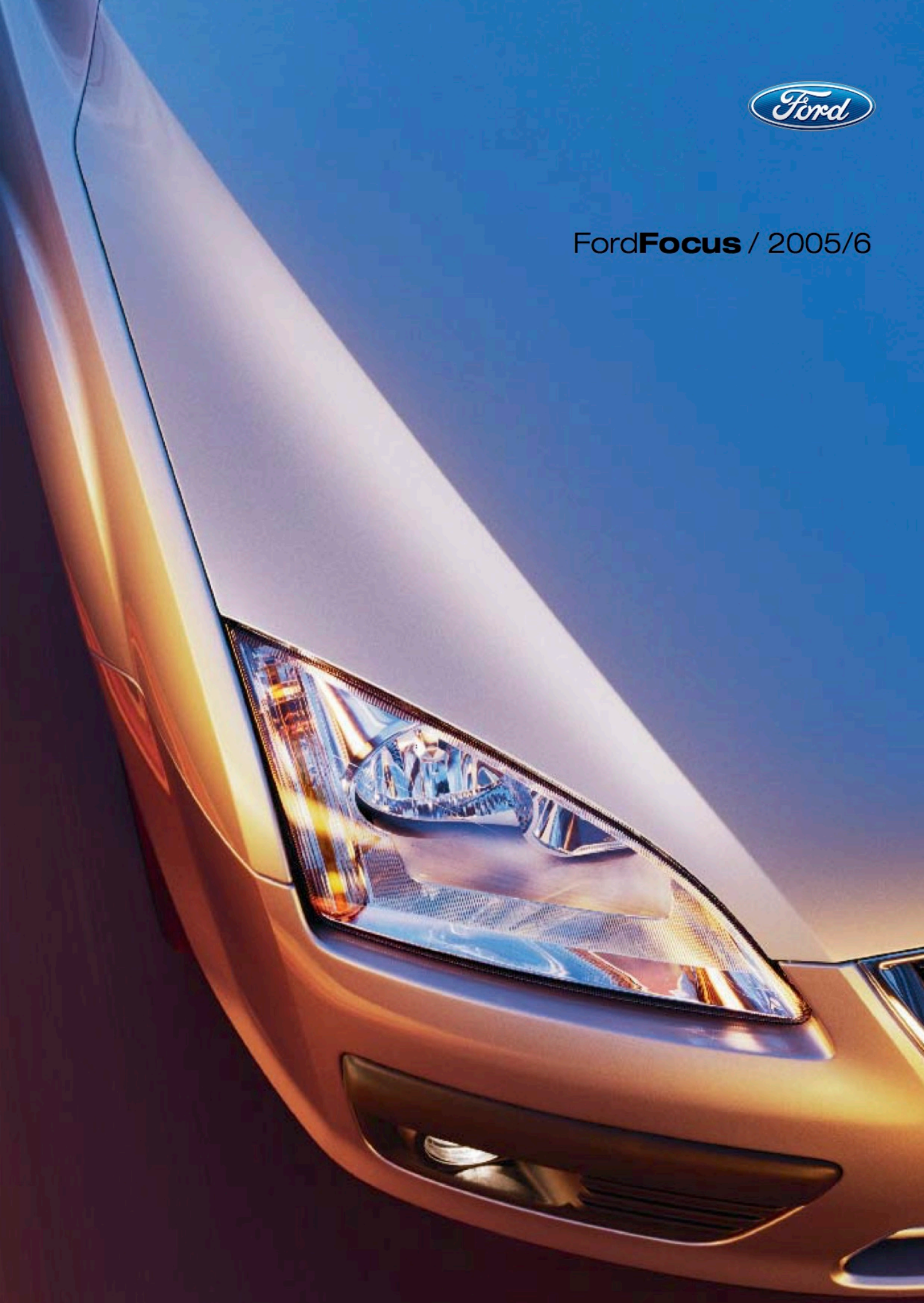




Ford**Focus** / 2005/6



Focus contents	Focus technology	Bodystyles and series	Personalise	Services	Specification
3 Welcome to the finer things in life	17 A new generation Ford 19 State-of-the-art technology 21 Class-leading safety 23 Peace of mind 25 Power, performance and refinement 27 Generous, refined and beautifully crafted 29 Class-leading space	31 Bodystyles and series models 33 Studio 35 LX 37 Sport 39 Zetec 41 Ghia 43 Titanium 45 ST	47 Audio, entertainment and hands-free phone systems 49 Make your mark 51 Wheels 53 Small details can make a big difference 55 Transportation accessories 57 Practicality and convenience 59 The finishing touch	61 Finance and services	62 Exterior and interior dimensions 63 Engine data 64 Fuel, performance and emissions 66 Model availability, weights and loads 68 Insurance groups 70 Mechanical features 71 Safety and security 71 Wheel availability 72 Exterior features 73 Audio and communication systems 74 Interior features 77 Option packs 78 Trim and body colours

Welcome to the finer things in life

Introducing the Ford Focus, a car that gives you a taste of the finer things in life.

Combining solid refined design, the best new technologies available, precision craftsmanship, and sporty yet relaxed handling – it has everything you'd expect from a premium car. Except the price tag.

Available in a wide choice of bodystyles including a sporty 3-door, refined 5-door, a stylish and practical estate, and a elegantly designed 4-door saloon, there is something for everyone.

Its comfortable, ergonomically designed interior, excellent safety systems and choice of highly-advanced engines are designed to make you feel safe, secure and confident every time you get behind the wheel.

If this sounds like your idea of the perfect car, then we're sure you will fall in love with the Ford Focus.

Note Where indicated (☞) certain vehicle images in this brochure are of a pre-production model and are computer generated, therefore, the design/features on the final version may differ in various respects. In addition, some of the features shown on the vehicle may be optional or not available in all markets. Please check the specification in each case with an authorised Ford Dealer.



Focus



Makes your day, even at night

Halogen-based Adaptive Front Lighting System horizontally adjusts the headlights according to the car's speed and angle of the steering wheel, boosting forward visibility through bends and making your driving experience more assured.

Make me comfortable

The refined interior cocoons around the driver and passengers, creating a feeling of snugness and security.



Put me in control

Unleashing the full potential of Ford Focus's acclaimed chassis, the new Ford Focus ST delivers thrilling driving and outstanding handling.





Make me look great

Refined design and functional
elegance provide a look that's solid
and well crafted.

Keep me safe

Anti-lock brakes with electronic brake-force distribution ensure optimum front and rear wheel braking, preventing the wheels from locking and allow the driver to maintain steering control even under emergency braking.





A new generation Ford with a new level of driving quality

The Ford Focus has been created to empower the driver. Each precision-built component, each advanced new technology, chosen to work in harmony and deliver a smooth, exciting driving experience – one that allows you to enjoy every twist and turn in the road and leave stress long behind you.

A wider rear track, longer wheelbase and a body structure that is 10% stiffer than the original Focus are just a few things that have combined to create an even greater feeling of stability, control, safety and, of course, comfort.

At the rear, the acclaimed Control Blade multi-link suspension allows each wheel to react independently, increasing stability and boosting passive rear-wheel steer – particularly helpful for emergency high-speed manoeuvres like changing lanes.

Similar ingenuity is to be found in the Electric Hydraulic Power-Assisted Steering (EHPAS). Fitted to 2.0-litre Duratec petrol and above and all Duratorq diesel engine models, it delivers reduced steering effort at low speeds, and progressive feedback as speed increases.

Responsive handling, precise low-friction steering and sophisticated suspension – it could only be the Ford Focus.



State-of-the-art technology that delivers confidence at every turn

Driving should always be a pleasure, even in difficult situations you should feel in control. That is where the Ford Focus's innovative safety features and dynamic, sure-footed handling come into their own.

The anti-lock braking system (ABS) with electronic brake-force distribution (EBD) is designed to help you steer around obstacles without skidding, even when you are forced to brake hard.

For extra stability, optional Electronic Stability Programme (ESP), with Traction Assist, helps to combat problems that can occur during sudden manoeuvres. By momentarily braking individual wheels or reducing engine power, it makes the car easier to control, even in tricky situations. And there is also the option of Emergency Brake Assist (EBA) that works in conjunction with larger front and rear disc brakes to help improve stopping distances.

Add to that the ultra-stiff bodyshell that helps to keep the wheels firmly in contact with the road, even around twisting bends, and you will agree that the Ford Focus comes generously equipped to help you feel safe, secure and protected.

Braking technology

Special sensors detect when a wheel begins to lock-up under braking and activates the ABS system. This helps to reduce stopping distances, whilst maintaining your ability to steer the car out of danger.





Feel protected in the safest car in its class*

The Ford Focus boasts the best in class score when it comes to safety. With a 100% occupant score for front and side impact, resulting in an overall occupant protection score of 35 points and a 5-star Euro NCAP rating, it's a record that is hard to beat. The Focus has also been awarded a 4-star child restraints rating and a 2-star pedestrian protection rating.

Driving is always more enjoyable when you are protected. So the Ford Focus's tough body structure is complimented by an Intelligent Protection System (IPS) that includes up to six airbags (four on Studio), front seat belt pyrotechnic pre-tensioners and load-limiting retractors, brake and clutch pedal intrusion protection system, and a load-limiting steering column.

Rigid body structure

The Ford Focus has an advanced, ultra-stiff body structure. This exceptional rigidity delivers a range of benefits, including stiffer mounting points on which to anchor the suspension for confidence-enhancing body control, and a ring of protective steel to provide superior crash protection.

Load-limiting steering column

The load-limiting, horizontal stroking steering column moves away from the driver during impact, and has also been designed to provide superior protection for the occupant's head, chest and legs in combination with the airbag and the seat belt system.

Child passenger safety

The Focus has achieved another high score when it comes to child restraint, being awarded a 4-star Euro NCAP rating for child protection**. Thorough testing of forward-facing and rear-facing child seats, in conjunction with ISOFIX anchorage points that ensure the seats are fully connected to the body structure of the car, revealed that children were well-protected in both frontal and side impact tests.

Cocooned in safety

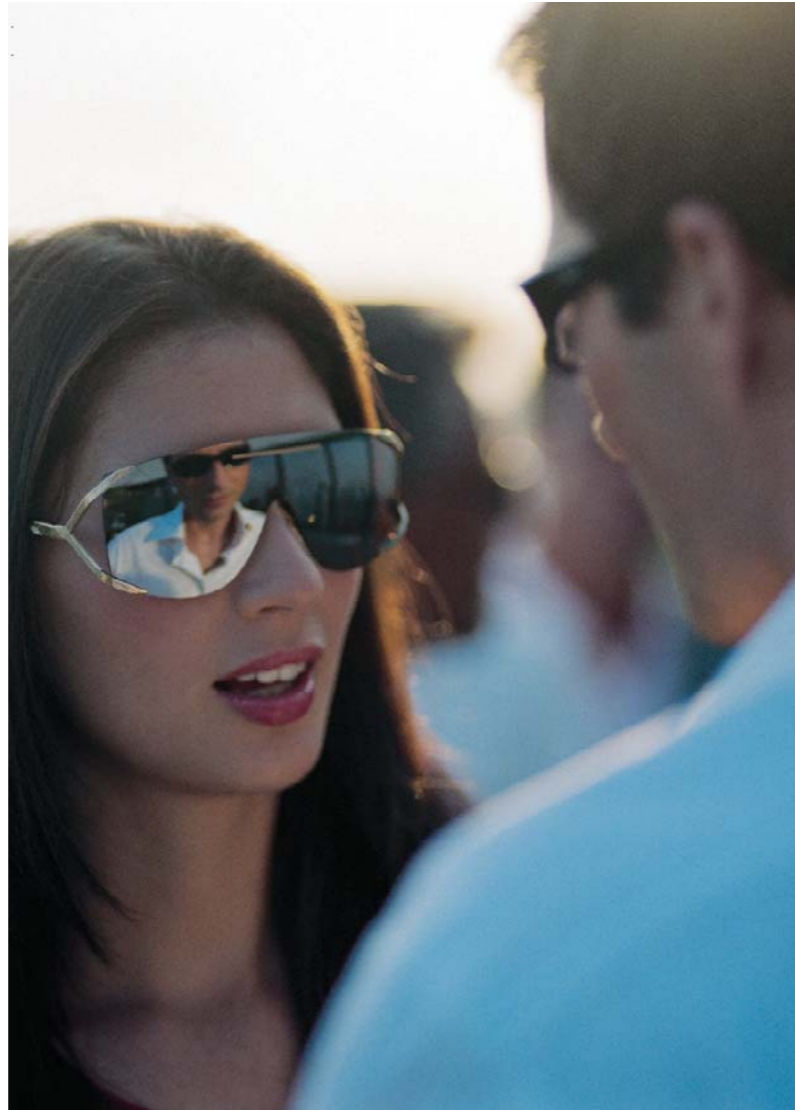
All-round airbags protect occupants from every angle. Front airbags and new 3D-shaped side airbags help protect occupants from upper body injuries. Curtain airbags descend from the headlining in the event of side impact to provide additional protection for front and rear seat passengers. (Excludes Studio)

*Note: A child seat should never be placed on the front passenger seat when the Ford vehicle is equipped with an operational front passenger's airbag. The safest place for children is properly restrained on the rear seat.

*According to Euro NCAP test phase 15.

**Tested by Euro NCAP in conjunction with a forward-facing Britax Romer Duo Plus and a rear-facing Britax Romer BabySafe Plus ISOFIX child seat.





Peace of mind, wherever you may be



Innovative thinking has led to the development of further thoughtful and accessible optional features, including a Solar Reflect Windshield, rainsensing wipers, KeyFree System and Headlamp Delay headlights that stay on long enough to guide you to your door at night (refer to the specification tables starting at Page 62 for full details).

Front lighting

The Ford Focus is available with a choice of headlight options: conventional halogen bulbs; halogen Adaptive Front Lighting System, which swivels the headlights as the car negotiates bends for superior illumination on twisting roads; and bi-xenon headlights that produce about twice as much light as a comparable halogen headlight for safer, less tiring night driving.

Hands-free access*

The handy new optional KeyFree System enables you to lock and unlock the doors and boot, or start the engine, without removing keys from your pocket or handbag.

Protected from the sun, prepared for the cold

The Solar Reflect Windshield (option on Ghia, Titanium and ST) reflects the sun's infrared rays, reducing the energy being transmitted into the car by up to 21% and helping the air conditioning system maintain a comfortable interior temperature. Also available is the 'Quickclear' windscreen (option on LX, Sport and ST) which demists the screen in seconds, even on frosty mornings. Together, they provide the perfect combination for year-round comfort and visibility.

Allergy-tested interior**

Those of us with an allergy will find the new Ford Focus more comfortable too. It has received the endorsement of TÜV, the accredited international testing organisation, for its allergy-tested interior.

*Available as an option on Zetec, Zetec Climate, Ghia, Titanium and ST.

**For more information, please see page 78.

Power, performance and refinement at the heart of every new Ford Focus

At the heart of the Ford Focus is a choice of advanced, responsive engines.

Petrol or diesel, manual or automatic, we understand that choosing an engine is really personal. So you will find that each engine we build is ready to deliver all the power and performance you need, just when you need it.

Our latest Duratorq TDCi diesel engines, for example, incorporate the best new technology to deliver a smoother, quieter and truly refined driving experience. As well as optimum fuel efficiency and lower emissions. (refer to page 64)

If you prefer petrol engines, our growing Duratec range, which includes the exciting new 1.6 Duratec Ti-VCT with Variable Camshaft Timing, provides exhilarating performance and improved fuel economy. As you would expect, outstanding quality, durability and reliability also come as standard.

When it comes to a choice of transmissions, we've created something special too, with the brilliantly conceived new Durashift CVT transmission*. Designed to let you switch between fully automatic gearshifting and sequential manual gear selection with seven forward gears, it offers the best of both worlds with none of the drawbacks.

Duratorq TDCi

The 2.0-litre Duratorq TDCi diesel engine benefits from the latest common-rail direct injection technology for the optimum combination of refined power with economy (refer to the specification tables starting at Page 62 for full details).

*Note that the availability of this particular transmission is subject to confirmation. Please check with your authorised Ford Dealer.

Duratec ST

The Ford Focus ST is powered by an awesome 2.5-litre Duratec ST 5-cylinder turbocharged 225 PS (166 kW) engine, coupled to a six-speed close-ratio manual transmission.



Duratec Ti-VCT

Twin independent Variable Camshaft Timing allows the engine to perform intelligently, changing its profile to provide more torque at higher speeds and greater fuel economy when driving slower (refer to page 64).



Refined and beautifully crafted

Settle inside the Ford Focus and you'll discover comfortable, calm and spacious surroundings that you'll love spending time in.

The option of new technologies like Bluetooth® help to make your life easier by allowing you to make hands-free phone calls without any cable connections. The Voice Control System too, is an ingenious addition, letting you control phone and optional features such as, audio systems, Dual Electronic Automatic Temperature Control (DEATC) and navigation systems, all by the sound of your voice.

Quieter, smoother and even more refined, every part of the car has been made to fit together perfectly. Minimal gaps between body panels, thicker front door side glass and new double door seals virtually eliminate wind noise, so all you'll hear is the reassuringly solid clunk of the doors closing.

Another thing you'll notice is the carefully chosen materials and colours, that not only look luxurious, but are durable, beautifully textured and a pleasure to touch.

Ergonomically designed, everything intuitively in the right place, you may be forgiven for thinking the Ford Focus has been created just for you.





Spacious and versatile

The Ford Focus not only provides additional space for front and rear seat occupants, but also offers the largest luggage space in its class – a generous 385 litres on cars carrying a mini spare wheel.

Load length is also increased, items up to 150 cm long (166 cm long on the estate) can now be fitted in with ease, and the versatile 60:40 split rear seats fold flat, so extra luggage can be carried in the back along with passengers. There are also 'D' rings, which allow you to secure heavy loads in transit.

All round, the Ford Focus gives you the convenient space you need to be yourself.



60:40 rear seats

The 60:40 split in the rear seats and rear shingle head restraints allows one portion of the seat to be folded flat very simply, while the other remains upright for passenger use. This allows for greater flexibility and makes it easier to transport awkward shaped or large objects.



Centre console with armrest

The centre console features a range of thoughtful stowage solutions, including cup holders, an ashtray and a convenient armrest on Zetec, Zetec Climate, Ghia, Titanium and ST that opens to reveal two separate stowage compartments.



Front seatback pockets and storage

The front seatback pockets (not available on Studio) are ideal for storing maps, books or other flat items. The rear stowage compartment allows passengers to safely store personal items.



Leave nothing behind

Outstanding luggage space means the Ford Focus will hold at least one more suitcase than the majority of its competitors.



Bodystyles and series models that allow you to define what's best for you



The Ford Focus comes in a range of bodystyles to suit your lifestyle perfectly, whichever you choose: sporty 3-door hatchback, refined 5-door hatchback or the stylish and practical estate - Available in Studio, LX, Sport, Zetec, Zetec Climate, Ghia, Titanium and ST.

The contemporary and elegant Focus 4-door boasts clean taut lines, an athletic stance and generous rear seat space, so it can carry your friends, family, and their luggage with ease - Available in Ghia and Titanium.



Studio

Attention to detail defines the whole Ford Focus range, and this is clear from the Studio. Touches, like fully reclining front seats and central locking, all combine to create a car that is extremely comfortable as well as being practical and versatile.

- 15" steel wheels with 8-spoke wheelcovers
- Black bodyside mouldings
- Driver's seat manual height adjustment
- Electrically-operated front windows
- Intelligent Protection System (IPS) with
 - driver and front passenger's airbags*
 - driver and front passenger's 3D side airbags
 - front seat belt pyrotechnic pretensioners
 - front seat belt load-limiting retractors
 - brake and clutch pedal intrusion prevention system
 - load-limiting steering column
- Anti-lock braking system (ABS) with electronic brake-force distribution (EBD)
- Immobiliser - Passive Anti-Theft System (PATS)
- Central locking
- Model 5000 stereo radio/cassette
- 60:40 split-back rear seat with ISOFIX child seat mounting provision
- Rake and reach adjustable steering column
- Air recirculation switch
- Front overhead courtesy light with theatre-style dimming and delayed switch-off
- Luggage compartment tonneau cover (estate only)

*Note: A child seat should never be placed on the front passenger seat when the Ford vehicle is equipped with an operational front passenger's airbag. The safest place for children is properly restrained on the rear seat.

ⓘ This image is computer generated and, therefore, the design/features on the final version may differ in various respects.



Electrically-operated front windows

The driver's window features one-touch lowering for added safety and convenience.

Rear spoiler

The rear spoiler enhances the sporty look and incorporates a high-level rear brake light. (3-door and 5-door models)





LX

The LX model has further features to increase comfort, style and practicality. Air conditioning comes as standard, as does remote control central/double locking. While aluminium-effect finish door handles complete the stylish look.

Additional to Studio

- 16" steel wheels with 8-spoke wheelcovers
- Remote control central/double locking
- Stereo radio/CD - Model 6000CD, RDS, EON, PTY, 'Keycode' anti-theft coding and six speakers (four front, two rear)
- CFC-free air conditioning
- Electrically-operated and heated door mirrors
- Silver effect centre stack
- Front seatback stowage pockets
- Centre rear head restraint (5-door and estate only)

👁 This image is computer generated and, therefore, the design/features on the final version may differ in various respects.



Remote locking

Remote control central/double locking is a useful and safe addition to the LX.

Air conditioning

Arrive cool and refreshed, whatever the weather, thanks to the high-efficiency air conditioning system.





Sport

The Ford Focus Sport will impress you with its range of performance-inspired features. From the distinctive alloy wheels and purposeful front fog lights to the choice of refined and lively engines, and assured driving dynamics, the Sport is nothing short of a true driver's car.

Additional to LX

- 16" 6-spoke alloy wheels
- Front fog lights
- 3-spoke leather-wrapped steering wheel

A pre-production vehicle was used for the purpose of this publication. The final specification of the Sport may vary.



Electrically-operated windows and mirrors

Electrically-operated windows and door mirrors are a useful addition to the Focus Sport.

Wheels

Sport models feature 16" 6-spoke alloy wheels.





Zetec/Zetec Climate

The Ford Focus Zetec and Zetec Climate represent the definitive driver's car, offering a choice of lively high-output engines coupled with sports-style front seats and sports suspension. Those who enjoy an engaging drive will appreciate the finishing touches of the 16" 5-spoke alloy wheels, and dark headlight surrounds.

Additional to Sport

- 16" 5-spoke alloy wheels
- Sports suspension
- Sports-style front seats
- 3-spoke leather-trimmed steering wheel
- Chrome grill surround
- Electrically-operated and heated door mirrors, with body colour housings
- Perimeter Alarm
- Dark headlight surrounds
- Body colour door handles
- Aluminium-finish handbrake release button
- Satin aluminium-finish instrument cluster rings
- Trip/fuel computer

Zetec Climate additional to Zetec

- 'Quickclear' heated windscreen
- CFC-free air conditioning

Air Conditioning not available on Zetec, only available on Zetec Climate.



Dark headlight surrounds

Unique headlight housing gives a sportier look and impressive stance.

Wheels

Zetec models are equipped with distinctive 16" 5-spoke tapered alloy wheels.





Ghia

If you are looking for more luxury, the Ford Focus Ghia brings it in abundance. Features like a 4-spoke leather-trimmed steering wheel with cruise control, 'Quickclear' heated windscreen with heated washer jets, rain-sensing windscreen wipers, an auto-dimming rear-view mirror and air conditioning-cooled glovebox all combine to take this car to a new level of refinement.

Additional to Zetec Climate

- 16" 5x3-spoke 'machined' alloy wheels
- Body colour bodyside mouldings
- Cruise control
- Thatcham Cat 1 volume sensing alarm
- Driver's side adjustment lumbar support
- Electrically-operated front and rear windows with one-touch lowering/closing, 'bounce back' anti-trap feature and global opening/closing
- Autowipers, with rain sensor
- Automatic headlights
- Auto-dimming rear-view mirror
- Leather gear shift knob with silver effect gate graphics and aluminium-effect finish ring
- Driver's side sunglasses holder
- Footwell illumination
- Front map lights
- Illuminated sunvisor vanity mirrors
- Rear overhead dome courtesy light
- Front carpet slip mats
- Air conditioning-cooled glovebox
- Folding rear centre armrest with storage
- Instrument panel storage

Ghia deletes sports suspension and sport style front seats over Zetec Climate



Cruise Control

Focus Ghia is equipped with cruise control as standard, to help reduce stress and fatigue, particularly on long motorway journeys.

Wheels

Ghia models feature 16" 5x3-spoke 'machined' alloy wheels.





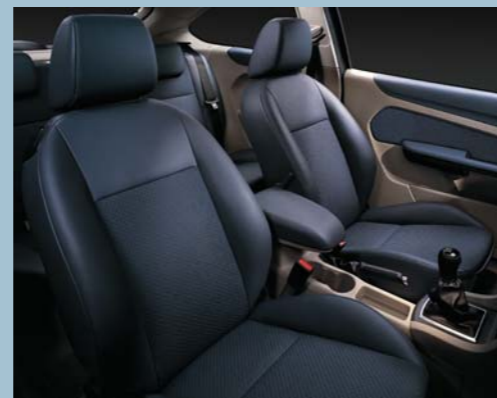
Titanium

The Titanium series defines modern refinement with all the premium touches that you would expect, plus partially leather-trimmed seats and a state-of-the-art Sony audio system to complete the impressive package.

Additional to Ghia

- 16" 5-spoke alloy wheels
- Partial leather-trimmed seats
- Sport-style front seats
- Sony audio system – Stereo radio/CD with MP3 capability and eight speakers (four front, four rear)
- Three-spoke leather-trimmed steering wheel
- Technically styled centre stack

Cruise control is not available on Titanium.



Partial-leather contoured seats

Luxurious and sporty partial-leather seats provide plenty of lateral support, particularly when cornering at speed.

Unique-finish centre console bezel

Gives a stylish look to the interior of the Titanium.





ST

For those who love driving, the new Ford Focus ST developed by Team RS delivers a purposeful sports design and exhilarating performance. With a muscular 225 PS (166 kW) 2.5-litre Duratec ST 5-cylinder turbocharged engine and a six-speed transmission, it blends addictive performance with refinement. Available in three series Focus ST, Focus ST-2, Focus ST-3 with an array of exclusive features the new ST delivers thrilling driving and outstanding handling.

Focus ST

- 18" 5-spoke alloy wheels
- Exclusive ST sports bodykit
- Recaro two-tone high performance fabric cloth sports seats
- Three-spoke ST sports steering wheel
- Chrome-tipped twin sport exhaust tailpipes
- Auxiliary instrument panel housing turbo boost, oil pressure and oil temperature gauges
- High-performance front and rear disc brakes
- Jet black headlining and submarine lighting
- Brushed aluminium gear knob and handbrake cover with racing pedals

Focus ST-2

- Sony Audio single CD/MP3 player
- Bi-xenon headlights with automatic headlight levelling and washer jets
- 'Quickclear' heated windscreen with heated washer jets
- ESP (Electronic Stability Programme) with Traction Assist and EBA

Focus ST-3

- Sony Audio 6CD player
- Full leather trimmed Recaro Seats including driver's and passenger heated front seats with 10-way manual adjustment and adjustable lumbar support and rear sculptured bench*.

* Rear sculptured seat cushion homologates vehicle as a 4-seater.

Model featured is in limited edition Electric Orange tri-coat metallic paint.



Information centre

Auxiliary instrument panel houses turbo boost, oil pressure and oil temperature gauges to keep you informed about the engine's performance.

The seat of power

Fully-adjustable Recaro sports seats are designed to provide outstanding driving comfort and excellent lateral support.





1. Bluetooth® wireless technology

Bluetooth® Hands-Free Phone and the Voice Control System technology provides a wireless mobile phone connection with voice recognition control for audio, phone and optional DEATC and navigation systems. Each of these options are available at extra cost please ask your authorized Ford dealer for details.

Not compatible with Becker 'Indianapolis' navigation system.

2. MultiMedia DVD system

Enables rear seat passengers to watch DVDs on a full-colour screen. Keeping your passengers entertained on long journeys. (Option on estate only)

3. Rear seat audio system

Features two headphone sockets and independent radio controls for rear seat passengers. Compatible with either Sony audio systems or DVD navigation system. (Option)

4. DVD navigation system

DVD navigation system with touch-screen. Provides detailed audio-visual directions to your destination and incorporates a 7" full-colour screen. (Option)

5. Low line CD navigation system

Features 4" monochrome display, stereo radio/CD/MP3, and allows CD audio listening whilst using the satellite navigation system. (Option)

6. Becker 'Indianapolis' navigation system

Single DIN-sized navigation system, renowned for its brilliant sound and superior navigation abilities, also plays CD/MP3. (Accessory). DIN adaptor with optional CD box provides a perfect fit for all DIN-sized equipment and storage for the navigation disc and your favourite music. Can be combined with an additional 6-CD changer. (Accessory)

7. Sony audio systems

The Sony 6CD RDS EON stereo radio/6-disc in-dash CD autochanger features a 'Keycode' for security. It is also available as a single MP3/CD system. (Option, single Sony MP3/CD is standard on Titanium)

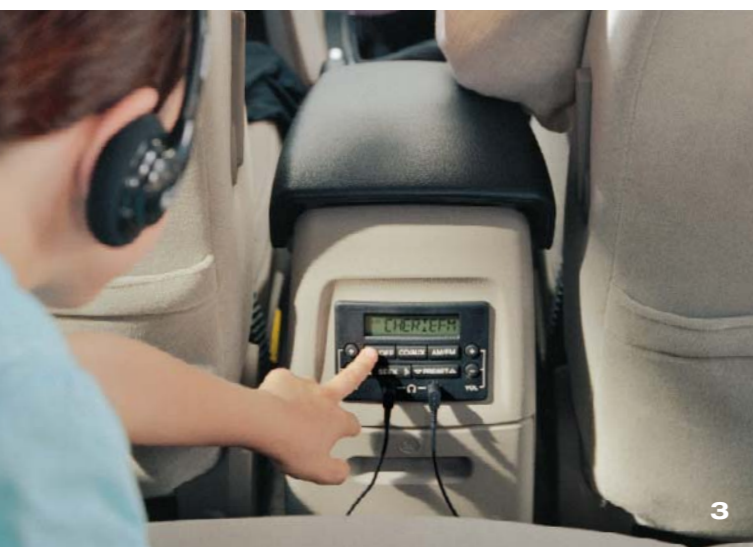
Your choice of audio, entertainment and hands-free phone systems

The Ford Focus is available with a range of premium quality audio, information and entertainment options – including the rear seat audio and the superb DVD MultiMedia system (available on estate only).

Audio systems include a 5000C radio, a 6000CD single-CD player, a Sony single-CD player with MP3 capability, and a Sony 6CD with in-dash CD autochanger. Sony systems include an external AUX jack located in the glovebox. All units incorporate a Radio Data System (RDS), which informs you of the name of your selected radio station. A DVD navigation system, with colour touch-screen, is also available on Ghia and Titanium, to help you find your way to even the most remote destinations.

Option = Must be ordered at time of vehicle purchase.

Accessory = Available from your Ford Dealer.



8. Mobile phone hands-free equipment

A selection of hands-free kits enables you to keep in touch on the move. The choice ranges from a base system and two Bluetooth® Hands-Free Phone systems (Advanced and Premium). Ask your Ford Dealer for more information regarding phone compatibility and cradle availability.

Note Image shown features Premium Bluetooth option (for illustrative purposes only.) which does not include mobile phone or hands-free equipment. It is an offence for drivers to use a hand-held mobile phone or similar device while driving.



Design elements to help you make your mark

The Ford Focus is designed to fit perfectly into your lifestyle. And now you can make it truly yours with a range of distinctive styling options. From sports-inspired exterior styling and suspension kits to exclusive interior styling elements, we have everything you need to really make your mark.

Option = Must be ordered at time of vehicle purchase.

Accessory = Available from your Ford Dealer.

Bodystyling kit

Enhance the appearance of your Ford Focus with this full bodystyling kit featuring a unique front grille (with body coloured frame), roof spoiler, front bumper, rear and side skirts. (Kit available as an option from March 2006. All parts are also available separately as accessories. Please contact your Ford Dealer for details)



Rear spoiler

Stylish body colour spoiler gives your Focus estate a sporty look. (Option and accessory)

Rear spoiler 3/5-door

Sporty body coloured spoiler for 3/5-door. Available in two distinctive designs. Please also refer to the main photograph above. (Both designs option and accessory. Please note that the small spoiler will be available from April 2006)

Styling Pack

Comprises a unique front grille insert with body colour surround, body colour rear spoiler and 17" 5-spoke 'silver' alloy wheels. Available for all 3- and 5-door models. (Option)

Unique front grille

With body colour surround. (Accessory)

17" 5-spoke alloy wheel with machined rim

(Option and accessory)

ST stripes

Show your rebellious streak with these great ST body stripes. Available as side and overhead stripes. (Option and accessory)

Eibach suspension-lowering kit

The Eibach suspension-lowering kit enhances driving performance and handling as well as giving a more sporty appearance. Lowers the car by 30 mm. (Accessory) Not suitable for ST.

Interior styling kit

Featuring luxury velour carpet mats, polished stainless steel scuff plates with recessed Focus nameplate, gear knob and handbrake cover with crafted aluminium-effect inserts. (Option; all parts also available separately as accessories)



Wheels to make heads turn

Attractive 18" 10-spoke alloy wheels guaranteed to turn heads wherever you go. (Accessory)

Choose from a selection of stylish wheel options. The alloy wheels show different finishes like machined surfaces, silver effect or grey painted and brightly chromed. All give your car a distinctive look that is guaranteed to get you noticed and make heads turn.

Option = Must be ordered at time of vehicle purchase.

Accessory = Available from your Ford Dealer.

Note: The availability of some wheels is subject to confirmation. Please check with your authorised Ford Dealer.

Standard and optional wheels

Optional and accessory wheels



Studio
15" 8-spoke wheelcover design
(Standard)



LX
16" 8-spoke wheelcover design
(Standard)



Sport
16" 6-spoke alloy wheel
(Standard)



Zetec / Zetec Climate
16" 5-spoke alloy wheel
(Standard)



Ghia
16" 5x3-spoke 'machined' alloy wheel
(Standard)



16" 5-spoke alloy wheel
(Option and accessory)



16" 6-spoke alloy wheel
(Option and accessory)



17" 5-spoke alloy wheel with machined rim
(Option and accessory)



17" 5-spoke alloy wheel
(Accessory)



17" 7x2-spoke alloy wheel
(Accessory)



Titanium
16" 5-spoke alloy wheel
(Standard)



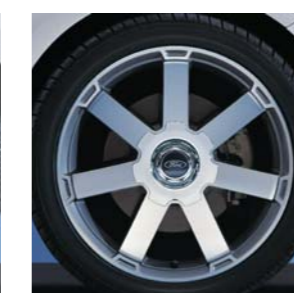
ST
18" 5-spoke alloy wheel
(Standard)



17" 9x2-spoke 'machined' alloy wheel
(Option and accessory)
(Also available in silver finish as accessory only)



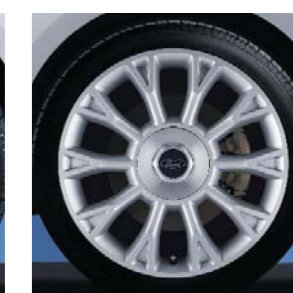
18" 7-spoke 'anthracite/machined rim' alloy wheel
(Option and accessory)



18" 7-spoke alloy wheel in either 'silver' or 'machined' finish with chrome centre cap
(Accessory)



18" 10-spoke alloy wheel
(Accessory)



18" 10-spoke Y-design alloy wheel
(Accessory)



1. Rear parking sensor

An audible warning helps you to safely judge the distance between the rear of your car and an obstacle for easier parking and manoeuvring. (Option)

Small details can make a big difference

The Ford Focus already includes a generous level of equipment as standard. But because only you know what you really want, we have left plenty of scope for you to turn it into something very special by choosing from a comprehensive range of optional features and accessories.

Option = Must be ordered at time of vehicle purchase.

Accessory = Available from your Ford Dealer.

4. Luxury velour carpet floor mats

Includes the Focus nameplate. Made to perfectly complement your chosen interior with a touch of luxury. Driver's mat is fixed to prevent slippage and interference with pedals. (Option and accessory)

6. Dual-zone air conditioning

Dual-zone electronic air conditioning (DEATC) allows both front and rear occupants to control the temperature in their part of the cabin individually. (Option for Ghia and Titanium)

5. Cruise control

Reduce your stress on long trips or when towing a trailer with optional cruise control. Simply select your desired speed and the system will maintain it for as long as you wish. (Standard on Ghia)

7. Bi-xenon headlights

Bi-xenon headlights generate an extremely bright light for superior illumination of the road ahead in bad weather or darkness, yet consume less energy and have a longer service life than conventional bulbs. (Option from Zetec)



2. Integrated sunblinds

Are integrated into the rear doors and can be quickly and easily drawn up to block out unwanted sunlight from the rear compartment. (Option, not available on Studio or 3-door)



3. Power sunroof

Tilt and slide adjustable for easily controllable ventilation. For added security, a global closing feature (standard on Ghia and Titanium) allows all the power-operated windows and sunroof to be closed together. An anti-trap feature helps prevent fingers and hands from becoming caught when the roof is closing. (Option)





Model Ghia
Options (at extra cost) Jeans metallic paint, rear spoiler
Accessories (at extra cost)
 17" 9x2 spoke "machined" alloy wheels, styled crossbars, Thule "Ocean" roof box, detachable tow bar (also available as an option).

Transportation accessories for every occasion

Now, more than ever, the Ford Focus is adaptable to every lifestyle. Bikes, luggage or skis; whatever your hobby, whatever the occasion, there's a transportation solution to suit your needs and match the look and style of your new Ford Focus.

Option = Must be ordered at time of vehicle purchase.

Accessory = Available from your Ford Dealer.



Thule roof box

Made by the most respected name in rooftop transportation. A range of different sized boxes designed to carry a wide variety of loads and protect them from weather and theft. (Accessory, available in various sizes)

Styled crossbars

Suitable for use with C-track roof rail system for Focus estate. Compatible with roof box and additional carriers for skis and bikes. Meets city crash requirements according to DIN 75302. (Option and accessory).

Mont Blanc 'Barracuda' bicycle carrier attachment

Easy to fit, easy to use bicycle carrier, designed to carry all kinds of bikes. Adjustable to suit frames from 20-80 mm diameter. Also features integral locks to help keep bikes safe and secure. (Accessory)

Base roof carrier

Available for 3/5-door and estate without C-track. Carrier is the base for all shown attachments. (Accessory)

Ski carrier

Elegant, fully-lockable ski carrier. Suitable for up to six pairs of skis. (Accessory)

Tow bar

For extra transport and stowage capability, the tow bar can tow up to 1,500 kg depending on engine. Available as fixed and detachable versions. (Option and accessory)



Added practicality and convenience

Whatever your priorities, the Ford Focus can accommodate them with ease. So you will find a comprehensive range of highly practical, quality accessories available to make your life easier and more convenient. And because they are genuine Ford parts, you can rely on them for fit, quality and reliable performance.

Option = Must be ordered at time of vehicle purchase.

Accessory = Available from your Ford Dealer.



1. Luggage retention net

This retractable retention net keeps your items secure in the luggage compartment while you're on the move and is easily stowed in its case, when not in use. (Option and accessory, estate only)

2. Traveller Pack

Includes both the luggage retention net and the reversible luggage compartment mat. (Option, estate only)

3. Reversible luggage compartment mat

Full-length mat provides luggage compartment protection even with rear seats folded forward. Reversible design offers choice of carpet or durable rubber surface ideal for carrying wet or dirty items. Incorporates flap to protect rear bumper during loading. (Option and accessory, estate only)

Loadspace liner

Durable liner, designed to keep the luggage compartment clean and tidy, ideal for transporting wet or dirty items. (Accessory)

Modular dog guard system

Half-height, full-height or full-height with luggage divider, this modular system keeps dogs or items of luggage safely in the luggage compartment. (Accessory on estate only)

Anti-slip luggage compartment mat

Luggage compartment protection, moulded to fit perfectly into the Ford Focus. Incorporates anti-slip surface. Available for all bodystyles. (Accessory)

Contoured mudflaps

Available as sets for front or rear, these practical, hard-wearing mudflaps protect the bodywork from stone chips, and help keep your Focus clean by reducing road spray. Not available for ST. (Accessory)



The finishing touch

Give your new Ford Focus the finishing touch with a choice of high-quality accessories. From child seats and emergency equipment to protective floor mats, you are sure to find just what you need. In addition, the distinctive range of personal items and gift ideas is the perfect reminder of your Ford Focus ownership.

Option = Must be ordered at time of vehicle purchase.

Accessory = Available from your Ford Dealer.

Britax child safety seat

The safest way for a child to travel is on the rear seat, in a specially-designed child safety seat. The seat can be fixed with an ISOFIX system or seat belts. A version is also available for children from birth to 18kg. (Accessory)

Safety and emergency equipment

Be prepared for the unexpected with this range of safety and emergency equipment (warning triangle, safety vest, fire extinguisher, first aid kit, towing rope and jump leads). (Accessory)

Carpet floor mats

Anthracite, smart and hard-wearing. Driver's mat is fixed to prevent slippage and interference with pedals. Kit with front and rear mats. (Accessory)

Contour rubber mats

Equipped with the Focus nameplate, the driver's mat is fixed to prevent slippage and interference with pedals. (Accessory)



- 1. FordBoutique bag**
Stylish bag with multiple pockets and single shoulder strap. Size: 29 x 44 x 17 cm.
- 2. FordBoutique keyring**
LED Lenser with white light design keyring with two detachable key wires.
- 3. FordBoutique watch**
Gent's multi-dial bracelet watch with hour, day and date dials. 50 metres water-resistant.
- 4. FordBoutique model Focus**
Minichamps 1:43 scale die-cast metal model of the Ford Focus.



2

4

Finance and services

Across the UK, a dedicated network of Ford Dealers is equipped and trained to meet the needs of today's drivers. Because of our coveted reputation for quality and reliability, from the moment your new vehicle leaves the showroom, you are assured of lasting, attentive service in many ways. Ford not only cares through Dealers, we also offer a variety of finance and leasing schemes to suit the needs of both the private and business customer. With our wide choice of plans and services, no one is more committed to delivering complete motoring confidence and total peace of mind than Ford.

Ford Credit

Ford Credit offers convenient and competitive financial services to Ford customers. Choose, try, finance and insure your Ford – without having to leave the showroom.

Ford Options

Ford Options is the flexible way to finance your Ford. If you are looking to renew your vehicle more often, this is the ideal plan. At the end of the agreement, choose which option suits you best – own the vehicle, return it or choose a new one.

Ford Acquire

Ford Acquire is a simple method of vehicle finance for both private customers and business users. Convenient to arrange, and with flexible terms to suit your needs, owning your Ford has never been so easy.

Ford Business Partner

As a specialist division of Ford Credit dedicated to partnering businesses, Ford Business Partner will work with you to achieve a complete Contract Hire transport solution.

Ford Insure

Ford Insure offers a wide range of products for you and your Ford, including Comprehensive Motor Insurance, Payment Protection Plan* and Guaranteed Asset Protection**. When you purchase a Ford from a Ford Dealer, you will receive 7 days' Driveaway cover*** free when you call Ford Insure for a no-obligation annual quotation.

What's the next step?

Your local Ford Dealer will be pleased to help if you have any further queries and advise you of current special promotions. Your Dealer can also supply a personalised quotation for the finance plan and vehicle of your choice.

To find your local Ford Dealer, please call 0845 7111 888.

Services

Ford Protect

Every new Ford car sold is protected by 12 months' unlimited mileage manufacturer's warranty, plus the option of extending this warranty to a 3-year/60,000 miles Ford Protect Classic Plan at no extra cost. Upgrades are also available, giving you the option of extended Ford Assistance and scheduled servicing.

Ford Rapid Fit

The national fast-fit network backed by Ford, offering you the convenience of a 'no-appointment-necessary, while-you-wait' service covering tyres, exhausts, brakes, batteries and much more. There are over 260 sites nationwide.

Ford Accident Repair Centres

If your Ford is involved in an accident, your Ford Dealer is best placed to return it to its pre-accident condition. Dealerships displaying the Ford Accident Repair Centre sign all meet the rigorous customer service and repair quality standards laid down by Ford, and offer a 3-year repair guarantee.

Ford Customer Relationship Centre

In the unlikely event that your Ford Dealer can't help you or you need to speak to Ford directly, the Ford Customer Relationship Centre is just a phone call away. Call local rate 0845 841 1111.

Finance subject to status and conditions, to over 18s only. Guarantees/ Indemnities may be required. Written quotations on request. Freepost Ford Credit. Correct at the time of going to print. Contact your Ford Authorised Dealer for terms and conditions. Business Partner Contract Hire is provided by Lex Vehicle Leasing. Ford Insure is underwritten by Norwich Union Insurance Limited, registered in England no. 99122. A member of the Aviva group. Authorised and regulated by the Financial Services Authority. Registered office: 8 Surrey Street, Norwich NR1 3NG. For our joint protection calls may be recorded and/or monitored. *Please refer to Payment Protection policy booklet for full details of the benefits and exclusions. ** Ford Insure Guaranteed Asset Protection is underwritten by Mapfre Asistencia. Authorised and regulated by the Financial Services Authority. Registered address: 22/26 Prospect Hill, Galway, Ireland. Registered in Ireland No 903874.***Excesses apply. Please refer to Summary of Cover for details. Maximum five vehicles. Not available in conjunction with any other promotion.

Exterior dimensions

	3 & 5 door	4-door	Estate	ST
Exterior (mm)				
Overall length	4342	4488	4472	4362
Overall width without mirrors	1840	1840	1840	1840
Overall width with mirrors	1991	1991	1991	1991
Overall height	1497	1497	1501	1497
Overall height with roof carrier system (unladen)	n/a	n/a	1609	n/a
Wheelbase	2640	2640	2640	2640
Front overhang	871	871	871	892
Rear overhang	831	977	961	830

Interior dimensions

	3-door	4-door	5-door	Estate
Front (mm)				
Headroom	999	999	999	999
Maximum effective leg room	1108	1108	1108	1108
Shoulder room	1414	1408	1408	1408
Rear (mm)				
Headroom	978	966	978	1009
Minimum effective leg room	853	853	853	853
Shoulder room	1399	1385	1385	1385
Luggage area (mm)				
Maximum cargo height	812	459	812	883
Maximum width between wheel arches	1050	1048	1050	1159
Loadspace length to back of rear seats	927	1058	927	1042
Loadspace length to back of front seats	1529	1659	1529	1669
Stowable luggage (cu m)[†]				
5-seat mode (laden to package tray)	0.385*	0.526*	0.385*	0.482*
2-seat mode (laden to roof)	1.247*	n/a	1.247*	1.525*

[†]Measured using the VDA method. Dimensions may vary dependent on the model and equipment fitted. *With mini spare wheel.

Engine data

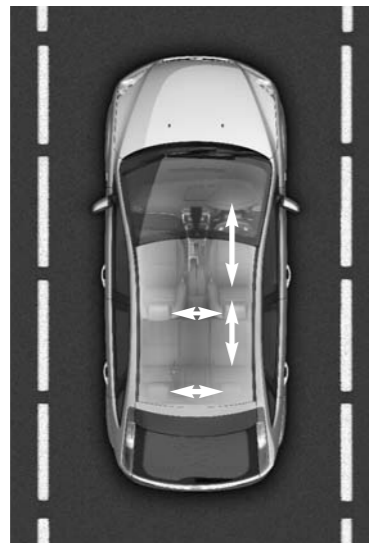
	Engine technical features	Maximum power ^o	Maximum torque ^o
1.4 Duratec Petrol 1388 cc	4 cylinders in line; DOHC; 16 valves; alloy cylinder head and block; electronic multipoint fuel injection; electronic throttle	59 kW (80 PS) at 5700 min ⁻¹ (rpm)	124 Nm at 3500 min ⁻¹ (rpm)
1.6 Duratec Petrol 1596 cc	4 cylinders in line; DOHC; 16 valves; alloy cylinder head and block; electronic multipoint fuel injection; electronic throttle	74 kW (100 PS) at 6000 min ⁻¹ (rpm)	150 Nm at 4000 min ⁻¹ (rpm)
1.6 Duratec Ti-VCT Petrol 1596 cc	4 cylinders in line; DOHC; 16 valves; Twin Independent Variable Camshaft Timing (Ti-VCT); alloy cylinder head and block; electronic multipoint fuel injection; electronic throttle	84 kW (115 PS) at 6000 min ⁻¹ (rpm)	155 Nm at 4150 min ⁻¹ (rpm)
2.0 Duratec Petrol 1999 cc	4 cylinders in line; DOHC; 16 valves; variable intake system; alloy cylinder head and block; electronic multipoint fuel injection	107 kW (145 PS) at 6000 min ⁻¹ (rpm)	185 Nm at 4500 min ⁻¹ (rpm)
2.5 Duratec ST 2522cc	5 cylinders in line; DOHC; 20 valves; alloy cylinder head; Variable Valve Timing (VVT); dual mass flywheel; turbo charged; electronic multipoint fuel injection	166 kW (225 PS) at 6000 min ⁻¹ (rpm)	320 Nm at 1600 - 4000 min ⁻¹ (rpm)
1.6 Duratorq TDCi Diesel 1560 cc	4 cylinders in line; DOHC; 16 valves; alloy cylinder head and block; direct injection with high-pressure, common-rail, multipoint fuel injection system; fixed geometry turbocharger with intercooler; electronic throttle; dual-mass flywheel	66 kW (90 PS) at 4000 min ⁻¹ (rpm)	215 Nm at 1750 min ⁻¹ (rpm)
1.8 Duratorq TDCi Diesel 1753 cc	4 cylinders in line; SOHC; 8 valves; cast iron head and block; direct injection with high pressure, common-rail, multipoint fuel injection system; variable geometry turbocharger with intercooler and transient torque overboostfunction; electronic throttle; dual-mass flywheel	85 kW (115 PS) at 3700 min ⁻¹ (rpm)	280 / 300* Nm at 1900 min ⁻¹ (rpm)
2.0 Duratorq TDCi Diesel 1997 cc	4 cylinders in line; DOHC; 16 valves; alloy cylinder head; direct injection with high-pressure, common-rail, multipoint fuel injection; variable geometry turbocharger with intercooler and transient torque overboost function; diesel particulate filter; electronic throttle; dual-mass flywheel	100 kW (136 PS) at 4000 min ⁻¹ (rpm)	320 / 340* Nm at 2000 min ⁻¹ (rpm)
DPF and FFV Engine Data			
1.8 Duratec Flexi-fuel 1798cc	4 cylinders in line; DOHC; 16 valves; alloy cylinder head and block, electronic multipoint fuel injection; electronic gas injection; fuel vapouriser/pressure regulator; dedicated ECU	92 kW (125 PS) at 6000 min ⁻¹ (rpm)	165 Nm at 4000 min ⁻¹ (rpm)
1.6 Duratorq TDCi Diesel DPF 1560 cc	4 cylinders in line; DOHC; 16 valves; alloy cylinder head and block; direct injection with high-pressure, common-rail, multipoint fuel injection system; variable geometry turbocharger with intercooler and transient torque overboost function; diesel particulate filter; electronic throttle; dual-mass flywheel	80 kW (109 PS) at 4000 min ⁻¹ (rpm)	240 / 260* Nm at 1750 min ⁻¹ (rpm)
2.0 Duratorq TDCi Diesel DPF 1997 cc	4 cylinders in line; DOHC; 16 valves; alloy cylinder head; direct injection with high-pressure, common-rail, multipoint fuel injection; variable geometry turbocharger with intercooler and transient torque overboost function; diesel particulate filter; electronic throttle; dual-mass flywheel	100 kW (136 PS) at 4000 min ⁻¹ (rpm)	320 / 340* Nm at 2000 min ⁻¹ (rpm)

^o Tested in accordance with ISO 1585. *With transient overboost.

EGR = Exhaust Gas Recirculation.

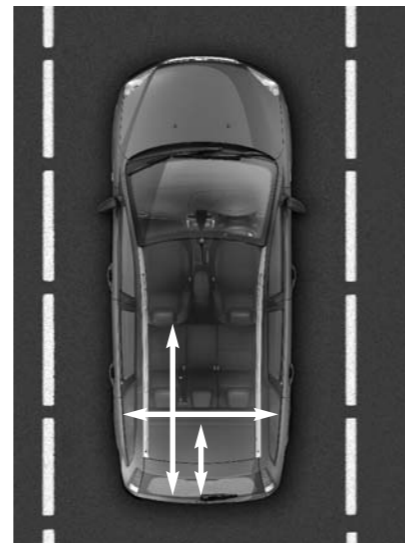
Interior seating dimensions 3-door, 4-door, 5-door and estate

Front seats:
Headroom: 999 mm
Maximum effective leg room: 1108 mm
Shoulder room: 1408 mm 4, 5-door and 1414 mm 3-door
Rear seats:
Headroom: 978 mm (966 mm in 4-door, and 1009 mm in estate)
Minimum effective leg room: 853 mm
Shoulder room: 1385 mm 4, 5-door & 1399 mm 3-door



Interior luggage dimensions 3-door, 4-door, 5-door and estate

Maximum cargo height: 833 mm (459 mm in 4-door, 890 mm in estate)
Maximum width between wheel arches: 1050 mm (1048 mm in 4-door, 1159 mm in estate)
Loadspace length to back of rear seats: 927 mm (1058 mm in 4-door, 1042 mm in estate)
Loadspace length to back of front seats: 1529 mm (1659 mm in 4-door, 1669 mm in estate)



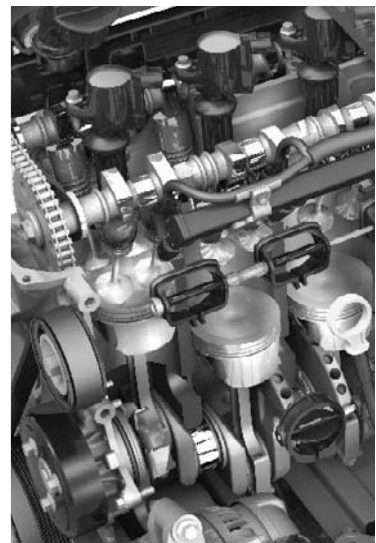
Duratorq TDCi diesel engines

Choose between four powerful yet refined Duratorq TDCi common-rail turbo diesels, a 1.6 (90PS), 1.6 (109 PS), 1.8 (115PS) and 2.0 (136 PS).



Duratec petrol engines

The Ford Focus comes with a choice of powerful, refined and reliable petrol engines: the Duratec 1.4, 1.6, 1.6 Ti-VCT, 2.0 and new 2.5-litre Duratec ST. All these engines are offered with Stage IV low emissions.



Fuel, performance and emissions

Stage	CO ₂ emissions (g/km) ⁹⁰	Derivative(s)	Fuel consumption (L/100 km) (mpg) ⁹⁰			Performance ⁹			
			Urban	Extra Urban	Combined	Max. speed (mph)	0-62 mph (secs)	31-62 mph* (secs)	
3-door Focus									
1.4 Duratec Petrol (80 PS)	Stage IV	Studio, LX, Sport	159	8.7 (32.5)	5.4 (52.3)	6.6 (42.8)	102	14.1	16.3
1.6 Duratec Petrol (100 PS)	Stage IV	LX, Sport, Zetec, Zetec Climate	161	8.7 (32.5)	5.5 (51.4)	6.7 (42.2)	112	11.9	13.3
1.6 Duratec Petrol (100 PS), Durashift 4-speed auto	Stage IV	Zetec, Zetec Climate	180	10.4 (27.2)	5.9 (47.9)	7.5 (37.7)	107	13.6	n/a
1.6 Duratec Petrol (115 PS) Ti-VCT	Stage IV	Zetec, Zetec Climate, Titanium	155	8.7 (32.5)	5.1 (55.4)	6.4 (44.1)	118	10.8	12.9
2.0 Duratec Petrol (145 PS)	Stage IV	Zetec, Zetec Climate, Titanium	170	9.8 (28.8)	5.4 (52.3)	7.1 (39.8)	128	9.2	11.9
2.0 Duratec Petrol (145 PS), Durashift 4-speed auto	Stage IV	Zetec, Zetec Climate, Titanium	192	11.2 (25.2)	6.1 (46.3)	8.0 (35.3)	121	10.7	n/a
2.5 Duratec ST Petrol (225 PS) Durashift 6-speed Manual	Stage IV	ST	224	13.8 (20.5)	6.8 (41.5)	9.3 (30.4)	152	6.8	6.1
1.6 Duratorq TDCi Diesel (109 PS)	Stage IV + DPF	Zetec, Zetec Climate, Titanium	127	6.2 (45.6)	4.0 (70.6)	4.8 (58.9)	117	10.9	10.9
1.8 Duratorq TDCi Diesel (115 PS)	Stage IV	Zetec, Zetec Climate, Titanium	137	6.7 (42.2)	4.3 (65.7)	5.2 (54.3)	119	10.8	9.5
2.0 Duratorq TDCi Diesel (136 PS), Durashift 6-speed manual	Stage IV ***	Zetec Climate, Ghia, Titanium	148	7.4 (38.2)	4.6 (61.4)	5.6 (50.4)	126	9.3	7.6
4-door Focus									
1.6 Duratec Petrol (100 PS)	Stage IV	Ghia	161	8.7 (32.5)	5.5 (51.4)	6.7 (42.2)	114	12	13.4
1.6 Duratec Petrol (100 PS), Durashift 4-speed auto	Stage IV	Ghia	184	10.6 (26.7)	6.0 (47.1)	7.7 (36.7)	109	13.7	n/a
1.6 Duratec Petrol (115 PS) Ti-VCT	Stage IV	Ghia, Titanium	155	8.7 (32.5)	5.1 (55.4)	6.4 (44.2)	121	10.9	13.0
2.0 Duratec Petrol (145 PS)	Stage IV	Ghia, Titanium	170	9.8 (28.8)	5.4 (52.3)	7.1 (39.8)	131	9.3	12.0
2.0 Duratec Petrol (145 PS), Durashift 4-speed auto	Stage IV	Ghia, Titanium	192	11.2 (25.2)	6.1 (46.3)	8.0 (35.3)	121	10.8	n/a
1.6 Duratorq TDCi Diesel (109 PS)	Stage IV + DPF	Ghia, Titanium	127	6.2 (45.6)	4.0 (70.7)	4.8 (58.9)	119	11	11.0
1.8 Duratorq TDCi Diesel (115 PS)	Stage IV	Ghia, Titanium	140	6.8 (41.6)	4.4 (64.2)	5.3 (53.3)	121	10.9	9.7
2.0 Duratorq TDCi Diesel (136 PS) Durashift 6-speed manual	Stage IV ***	Ghia, Titanium	151	7.5 (37.7)	4.7 (60.1)	5.7 (49.6)	127	9.4	7.9
5-door Focus									
1.4 Duratec Petrol (80 PS)	Stage IV	Studio, LX, Sport	159	8.7 (32.5)	5.4 (52.3)	6.6 (42.8)	102	14.1	16.3
1.6 Duratec Petrol (100 PS)	Stage IV	LX, Sport, Zetec, Zetec Climate, Ghia	161	8.7 (32.5)	5.5 (51.4)	6.7 (42.2)	112	11.9	13.3

Fuel, performance and emissions

Stage	CO ₂ emissions (g/km) ⁹⁰	Derivative(s)	Fuel consumption (L/100 km) (mpg) ⁹⁰			Performance ⁹			
			Urban	Extra Urban	Combined	Max. speed (mph)	0-62 mph (secs)	31-62 mph* (secs)	
1.6 Duratec Petrol (100 PS) Durashift 4-speed auto	Stage IV	LX, Sport, Zetec, Zetec Climate, Ghia	184	10.6 (26.6)	6.0 (47.1)	7.7 (36.7)	107	13.6	n/a
1.6 Duratec Petrol (115 PS) Ti-VCT	Stage IV	LX, Sport, Zetec, Zetec Climate, Ghia, Titanium	155	8.7 (32.5)	5.1 (55.4)	6.4 (44.1)	118	10.8	12.9
1.8 Duratec Flexi-fuel	Stage IV	LX, Sport, Zetec, Zetec Climate, Ghia	169	9.6 (29.4)	5.6 (50.4)	7.0 (40.4)	123	10.3	12.1
2.0 Duratec Petrol (145 PS)	Stage IV	Zetec, Zetec Climate, Ghia, Titanium	170	9.8 (28.8)	5.4 (52.3)	7.1 (39.8)	128	9.2	11.9
2.0 Duratec Petrol (145 PS), Durashift 4-speed auto	Stage IV	Zetec, Zetec Climate, Ghia, Titanium	192	11.2 (25.2)	6.1 (46.3)	8.0 (35.3)	121	10.7	n/a
2.5 Duratec ST (225 PS) Durashift 6-speed manual	Stage IV	ST	224	13.8 (20.5)	6.8 (41.5)	9.3 (30.4)	152	6.8	6.1
1.6 Duratorq TDCi Diesel (90 PS)	Stage IV	Studio, LX, Sport	125	5.9 (47.9)	4.0 (70.7)	4.7 (60.1)	111	12.6	12.7
1.6 Duratorq TDCi Diesel (109 PS)	Stage IV + DPF	LX, Sport, Zetec, Zetec Climate, Ghia, Titanium	127	6.2 (45.6)	4.0 (70.6)	4.8 (58.9)	117	10.9	10.9
1.8 Duratorq TDCi Diesel (115 PS)	Stage IV	LX, Sport, Zetec, Zetec Climate, Ghia, Titanium	137	6.7 (42.2)	4.3 (65.7)	5.2 (54.3)	119	10.8	9.5
2.0 Duratorq TDCi Diesel (136 PS), Durashift 6-speed manual	Stage IV ***	Zetec Climate, Ghia, Titanium	148	7.4 (38.2)	4.6 (61.4)	5.6 (50.4)	126	9.3	7.8
5-door Focus Estate									
1.6 Duratec Petrol (100 PS)	Stage IV	Studio, LX, Sport, Zetec, Zetec Climate, Ghia	161	8.7 (32.5)	5.5 (51.4)	6.7 (42.2)	112	12.2	13.6
1.6 Duratec Petrol (100 PS), Durashift 4-speed auto	Stage IV	LX, Sport, Zetec, Zetec Climate, Ghia	184	10.6 (26.6)	6.0 (47.1)	7.7 (36.7)	107	13.9	n/a
1.6 Duratec Petrol (115 PS) Ti-VCT	Stage IV	LX, Sport, Zetec, Zetec Climate, Ghia, Titanium	155	8.8 (32.1)	5.2 (54.3)	6.4 (43.5)	118	11.0	13.2
1.8 Duratec Flexi-fuel	Stage IV	LX, Sport, Zetec, Zetec Climate, Ghia	169	9.6 (29.4)	5.6 (50.4)	7.0 (40.4)	123	10.5	12.4
2.0 Duratec Petrol (145 PS)	Stage IV	Zetec, Zetec Climate, Ghia, Titanium	170	9.8 (28.8)	5.4 (52.3)	7.1 (39.8)	128	9.4	12.1
2.0 Duratec Petrol (145 PS), Durashift 4-speed auto	Stage IV	Zetec, Zetec Climate, Ghia, Titanium	192	11.2 (25.2)	6.1 (46.3)	8.0 (35.3)	121	10.7	n/a

***Also available with DPF (Diesel Particulate Filter)

Duratec Ti-VCT

The Focus engine range is led by the fresh and exciting 1.6-litre Duratec Ti-VCT with Twin independent Variable Camshaft Timing. It uses fuel more efficiently, yet provides increased power and torque.

**Advanced technology**

Ford's Duratec Ti-VCT engine uses the latest fully variable valve timing technology to perfectly match the engine's response with the demands of the driver.

**2.5-litre Duratec ST**

The exciting new Ford Focus ST is powered by a 2.5-litre Duratec ST 5-cylinder turbocharged engine. Powerful, yet incredibly smooth-revving, the new engine delivers 225 PS (166 kW) of power, and a huge 320 Nm of torque at just 1600 rpm.

**Durashift 6-speed manual**

Engineered to complement the powerful 2-litre Duratorq TDCi diesel engine, the Durashift 6-speed manual transmission delivers added in-gear flexibility, fuel economy and refinement.



Fuel, performance and emissions

	Stage	CO ₂ emissions (g/km) ⁹⁰	Fuel consumption (L/100 km) (mpg) ⁹⁰			Performance ⁹			
			Urban	Extra Urban	Combined	Max. speed (mph)	0-62 mph (secs)	31-62 mph* (secs)	
1.6 Duratorq TDCi Diesel (90 PS)	Stage IV	Studio, LX, Sport	125	5.9 (47.9)	4.0 (70.7)	4.7 (60.1)	111	12.9	12.9
1.6 Duratorq TDCi Diesel (109 PS)	Stage IV + DPF	LX, Sport, Zetec, Zetec Climate, Ghia, Titanium	127	6.2 (45.6)	4.0 (70.6)	4.8 (58.9)	117	11.1	11.1
1.8 Duratorq TDCi Diesel (115 PS)	Stage IV	LX, Sport, Zetec, Zetec Climate, Ghia, Titanium	140	6.8 (41.6)	4.4 (64.2)	5.3 (53.3)	119	10.9	9.7
2.0 Duratorq TDCi Diesel (136 PS), Durashift 6-speed manual	Stage IV ***	Zetec Climate, Ghia, Titanium	151	7.5 (37.7)	4.7 (60.1)	5.7 (49.6)	126	9.5	7.9

*In 4th gear. ⁹Ford test figures. ⁹⁰All CO₂ emissions figures in g/km and fuel consumption figures in L/100 km (mpg) are from officially approved tests in accordance with EEC Directive 93/116/EC. The CO₂ emissions and fuel consumption test figures shown in the chart do not express or imply any guarantee of the fuel consumption of a car of the class in question. All the figures are based on tests conducted on vehicles with core equipment level and with standard wheels and tyres; optional or accessory wheels and tyres may have an effect on the emissions and fuel consumption of a vehicle. **Urban** An engine started from cold in laboratory conditions operated at varying speeds, maximum 31 mph, average 12 mph over a theoretical distance of 2.5 miles (4 km). **Extra Urban** Conducted immediately after the urban cycle, it consists of half steady speed driving and half varying speed driving, maximum 75 mph over a distance of 4.3 miles (7 km). **Combined** This is an average of the two parts of the test, weighted by the distances covered in each part. All vehicles are 5-speed manual unless auto stated. **CVT** = Constantly Variable automatic Transmission. **DPF** = Diesel Particulate Filter. **Note** All petrol engines are equipped with a catalytic converter. **The availability date of this particular transmission is subject to confirmation. Please check with your Authorized Ford Dealer ***Also available with DPF (Diesel Particulate Filter)

Model availability, weights and loads

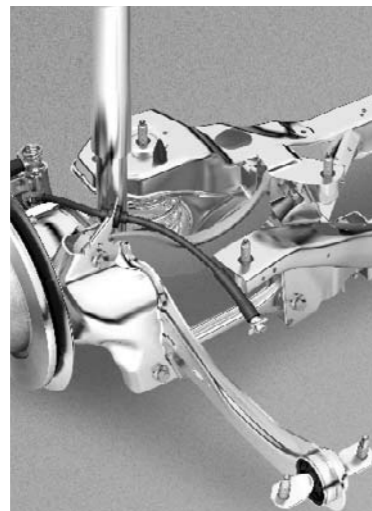
	Kerbweights (kg)								Gross Vehicle Mass (kg)	Max. towable mass (kg)
	Stage	Studio	LX	Sport	Zetec/ Zetec Climate	Ghia	Titanium	ST		
3-door Focus										
1.4 Duratec Petrol (80 PS)	Stage IV	1229	1245	1250					1690	700
1.6 Duratec Petrol (100 PS)	Stage IV		1242	1247	1255				1710	1200
1.6 Duratec Petrol (100 PS), Durashift 4-speed auto	Stage IV				1284				1740	800
1.6 Duratec Petrol (115 PS) Ti-VCT	Stage IV				1267		1276		1720	1200
2.0 Duratec Petrol (145 PS)	Stage IV				1326		1337		1775	1400
2.0 Duratec Petrol (145 PS) Durashift 4-speed auto	Stage IV				1343		1352		1785	1300
2.5 Duratec ST (225 PS) Durashift 6-speed manual	Stage IV							1392	1850	n/a*
1.6 Duratorq TDCi Diesel (109 PS)	Stage IV + DPF				1356		1362		1780	1300
1.8 Duratorq TDCi Diesel (115 PS)	Stage IV				1397		1406		1860	1500
2.0 Duratorq TDCi Diesel (136 PS) Durashift 6-speed manual	Stage IV				n/a / 1392		1399		1850	1500

Model availability, weights and loads

	Stage	Kerbweights (kg)							Gross Vehicle Mass (kg)	Max. towable mass (kg)
		Studio	LX	Sport	Zetec/ Zetec Climate	Ghia	Titanium	ST		
2.0 Duratorq TDCi Diesel (136 PS), Durashift 6-speed manual	Stage IV + DPF				n/a / 1401		1408		1860	1500
4-door Focus										
1.6 Duratec Petrol (100 PS)	Stage IV						1313		1750	1200
1.6 Duratec Petrol (100 PS), Durashift 4-speed auto	Stage IV						1313		1780	800
1.6 Duratec Petrol (115 PS) Ti-VCT	Stage IV						1322	1319	1765	1200
2.0 Duratec Petrol (145 PS)	Stage IV						1377	1374	1810	1400
2.0 Duratec Petrol (145 PS), Durashift 4-speed auto	Stage IV				1385		1397	1395	1820	1300
1.6 Duratorq TDCi Diesel (109 PS)	Stage IV + DPF						1421	1418	1835	1200
1.8 Duratorq TDCi Diesel (115 PS)	Stage IV						1451	1448	1905	1500
2.0 Duratorq TDCi Diesel (136 PS) Durashift 6-speed manual	Stage IV						1461	1458	1895	1500
2.0 Duratorq TDCi Diesel (136 PS) Durashift 6-speed manual	Stage IV + DPF						1470	1467	1905	1500
5-door Focus										
1.4 Duratec Petrol (80 PS)	Stage IV	1247	1263	1268					1710	700
1.6 Duratec Petrol (100 PS)	Stage IV		1264	1269	1277	1280			1730	1200
1.6 Duratec Petrol (100 PS), Durashift 4-speed auto	Stage IV		1301	1306	1314	1317			1755	800
1.6 Duratec Petrol (115 PS) Ti-VCT	Stage IV		1273	1278	1285	1289	1294		1740	1200
1.8 Duratec Flexi-fuel	Stage IV		1333	1337	1350	1348			1795	1200
2.0 Duratec Petrol (145 PS)	Stage IV				1345	1358	1356		1795	1400
2.0 Duratec Petrol (145 PS) Durashift 4-speed auto	Stage IV				1361	1373	1371		1805	1300
2.5 Duratec ST (225PS) Durashift 6-speed manual	Stage IV							1437	1865	n/a
1.6 Duratorq TDCi Diesel (90 PS)	Stage IV	1352	1357	1408					1790	1200
1.6 Duratorq TDCi Diesel (109 PS)	Stage IV + DPF		1362	1367	1375	1376	1381		1795	1300
1.8 Duratorq TDCi Diesel (115 PS)	Stage IV		1406	1415	1415	1427	1424		1875	1500
2.0 Duratorq TDCi Diesel (136 PS) Durashift 6-speed manual	Stage IV				n/a / 1405		1417	1412	1865	1500
2.0 Duratorq TDCi Diesel (136 PS) Durashift 6-speed manual	Stage IV + DPF				n/a / 1414		1426	1421	1875	1500
5-door Focus Estate										
1.6 Duratec Petrol (100 PS)	Stage IV	1278	1294	1299	1310	1320			1820	1200
1.6 Duratec Petrol (100 PS), Durashift 4-speed auto	Stage IV		1323	1328	1340	1350			1845	800
1.6 Duratec Petrol (115 PS) Ti-VCT	Stage IV		1295	1300	1310	1321	1316		1825	1200

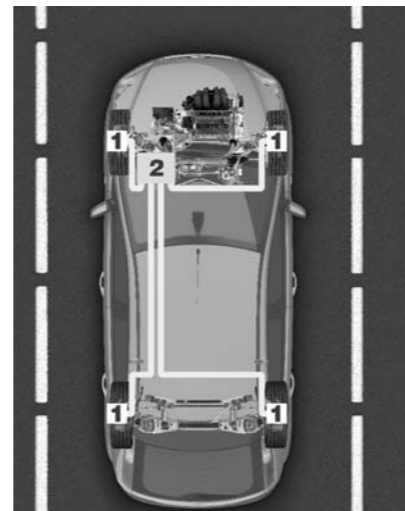
Control Blade independent rear suspension

This system absorbs both horizontal and vertical rear-wheel movement and provides passive rear-wheel steering for increased cornering stability. Control Blade independent rear suspension is more effective at cushioning impacts than torsion beam suspensions.



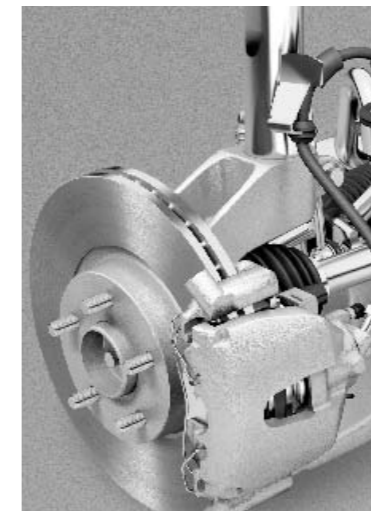
Brake technology

The standard anti-lock braking system (ABS) uses sensors on each wheel (1) that work with the onboard computer (2) to monitor wheel lock-up. The system includes Electronic Brake-force Distribution (EBD), and can be specified with the option of ESP and Emergency Brake Assist (EBA). Together, these features contribute to a safe and stable driving experience.



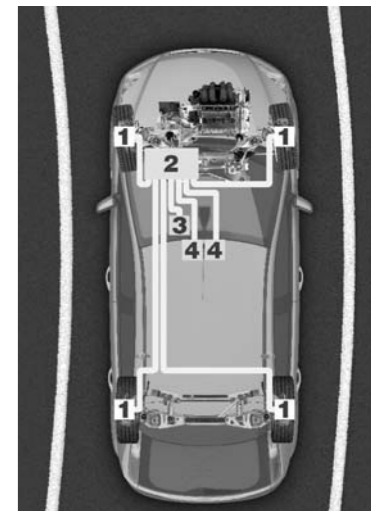
Emergency Brake Assist (EBA)

EBA monitors the amount of brake pressure being applied to the pedal during an emergency stop. If the force being applied to the pedal is sufficient, the EBA system will automatically apply the brakes to their maximum pressure. This assistance, in conjunction with ABS, can reduce the stopping distance of the vehicle greatly. (Option within ESP)



Electronic Stability Programme (ESP)

ESP has sensors that monitor front and rear wheel rotation (1), steering wheel angle (3), yaw angle and lateral acceleration (4). If they detect oversteer or understeer, the onboard computer (2) can modulate engine power and apply the brakes to individual wheels to keep them under control and heading in the right direction. (Option with EBA)



Model availability, weights and loads

	Kerbweights (kg)							Gross Vehicle Mass (kg)	Max. towable mass (kg)
	Stage	Studio	LX	Sport	Zetec/ Zetec Climate	Ghia	Titanium		
1.8 Duratec Flexi-fuel	Stage IV		1367	1374	1387	1381		1895	1200
2.0 Duratec Petrol (145 PS)	Stage IV				1383	1395	1390	1895	1400
2.0 Duratec Petrol (145 PS), Durashift 4-speed auto	Stage IV				1398	1411	1409	1905	1300
1.6 Duratorq TDCi Diesel (90 PS)	Stage IV	1387	1391	1408				1880	1200
1.6 Duratorq TDCi Diesel (109 PS)	Stage IV + DPF		1396	1401	1413	1421	1415	1885	1300
1.8 Duratorq TDCi Diesel (115 PS)	Stage IV				1449		1458	1950	1500
2.0 Duratorq TDCi Diesel (136 PS) Durashift 6-speed manual	Stage IV				n/a / 1452	1465	1459	1950	1500
2.0 Duratorq TDCi Diesel (136 PS) Durashift 6-speed manual	Stage IV + DPF				n/a / 1461	1474	1468	1950	1500

*Represents the lightest kerbweight assuming the driver at 75 kg, full fluid levels and fuel levels, subject to manufacturing tolerances and options, etc., fitted. * = Optional transmission. n/a = Not available. **Note** All vehicles are 5-speed manual unless auto stated. All petrol engines are equipped with a catalytic converter. **CVT** = Constantly Variable automatic Transmission. **DPF** = Diesel Particulate Filter. **Towing limits** quoted represent the maximum towing ability of the vehicle at its Gross Vehicle Mass to restart on a 12 per cent gradient at sea level. The performance and economy of all models will be reduced when used for towing. **Roof rack load** is a maximum of 75 kg on all models. **Nose weight limit** is a maximum of 75 kg on all models. **The availability date of this particular transmission is subject to confirmation please check with your Authorized Ford Dealer. *no tow bar available.

Insurance groups

	Studio	LX	Sport	Zetec/ Zetec Climate	Ghia	Titanium	ST
3-door Focus							
1.4 Duratec Petrol (80 PS) (Stage IV)	4E	4E	4E				
1.6 Duratec Petrol (100 PS) (Stage IV)		6E	6E	6E			
1.6 Duratec Petrol (100 PS), Durashift 4-speed auto* (Stage IV)				6E			
1.6 Duratec Petrol (115 PS) Ti-VCT (Stage IV)				6E	7E		
2.0 Duratec Petrol (145 PS), Durashift 4-speed auto* (Stage IV)				n/a / 9E	10E		
2.0 Duratec Petrol (145 PS) (Stage IV)				9E	10E		
2.5 Duratec ST (225 PS) (Stage IV)							17E
1.6 Duratorq TDCi Diesel (109 PS) (Stage IV + DPF)				6E	7E		
1.8 Duratorq TDCi Diesel (115 PS) (Stage IV)				6E	7E		
2.0 Duratorq TDCi Diesel (136 PS) (Stage IV)				n/a / 9E	10E		
4-door Focus							
1.6 Duratec Petrol (100 PS) (Stage IV)					7E		
1.6 Duratec Petrol (100 PS), Durashift 4-speed auto* (Stage IV)					7E		
1.6 Duratec Petrol (115 PS) Ti-VCT (Stage IV)					7E	7E	
2.0 Duratec Petrol (145 PS) (Stage IV)					10E	10E	

Insurance groups

	Studio	LX	Sport	Zetec/ Zetec Climate	Ghia	Titanium	ST
2.0 Duratec Petrol (145 PS), Durashift 4-speed auto* (Stage IV)					10E	10E	
1.6 Duratorq TDCi Diesel (109 PS) (Stage IV + DPF)					7E	7E	
1.8 Duratorq TDCi Diesel (115 PS) (Stage IV)					7E	7E	
2.0 Duratorq TDCi Diesel (136 PS), Durashift 6-speed manual (Stage IV)					9E	10E	
5-door Focus							
1.4 Duratec Petrol (80 PS) (Stage IV)	4E	4E	4E				
1.6 Duratec Petrol (100 PS) (Stage IV)		6E	6E	6E	7E		
1.6 Duratec Petrol (100 PS), Durashift 4-speed auto* (Stage IV)		6E	6E	6E	7E		
1.6 Duratec Petrol (115 PS) Ti-VCT (Stage IV)		6E	6E	6E	7E	7E	
1.8 Duratec Flexi-fuel (Stage IV)		tba	tba	tba	tba	tba	
2.0 Duratec Petrol (145 PS) (Stage IV)				9E	10E	10E	
2.0 Duratec Petrol (145 PS), Durashift 4-speed auto* (Stage IV)				9E	10E	10E	
2.5 Duratec Petrol (225 PS), (Stage IV)							17E
1.6 Duratorq TDCi Diesel (90 PS) (Stage IV)	5E	6E	6E				
1.6 Duratorq TDCi Diesel (109 PS) (Stage IV + DPF)		6E	6E	6E	7E	7E	
1.8 Duratorq TDCi Diesel (115 PS) (Stage IV)		6E	6E	6E	7E	7E	
2.0 Duratorq TDCi Diesel (136 PS), Durashift 6-speed manual (Stage IV)				n/a / 9E	9E	10E	
5-door Focus Estate							
1.6 Duratec Petrol (100 PS) (Stage IV)	5E	6E	6E	6E	7E		
1.6 Duratec Petrol (100 PS), Durashift 4-speed auto* (Stage IV)		6E	6E	6E	7E		
1.6 Duratec Petrol (115 PS) Ti-VCT (Stage IV)		6E	6E	6E	7E	7E	
1.8 Duratec Flexi-fuel (Stage IV)		tba	tba	tba	tba	tba	
2.0 Duratec Petrol (145 PS) (Stage IV)				9E	10E	10E	
2.0 Duratec Petrol (145 PS), Durashift 4-speed auto* (Stage IV)				9E	10E	10E	
1.6 Duratorq TDCi Diesel (90 PS) (Stage IV)	5E	6E	6E				
1.6 Duratorq TDCi Diesel (109 PS) (Stage IV + DPF)		6E	6E	6E	7E	7E	
1.8 Duratorq TDCi Diesel (115 PS) (Stage IV)		6E	6E	6E	7E	7E	
2.0 Duratorq TDCi Diesel (136 PS), Durashift 6-speed manual (Stage IV)				n/a / 9E	9E	10E	
2.0 Duratorq TDCi Diesel (136 PS), Durashift 6-speed manual (Stage IV)				n/a / 9E	9E	10E	

E = Exceeds security requirement for model concerned and group rating has been reduced. n/a = Not available. *Includes trip computer. **The availability date of this particular transmission is subject to confirmation please check with your Authorized Ford Dealer.

Passive Anti-Theft System

To help keep your car where you leave it, the new Ford Focus is equipped with a Passive Anti-Theft System (PATS). PATS automatically prevents the engine from starting unless it recognises an electronic code generated by a transponder within the ignition key.



Global opening/closing

For added convenience and security, the global opening/closing feature opens or shuts the electrically-operated windows and sunroof at the press of a button.

(Standard on Ghia and Titanium. Not available on Titanium 3-door)



Remote central locking

Remote control central/double locking conveniently locks or unlocks the doors at the press of a button (not available on Studio).



KeyFree System

The KeyFree System allows you to lock and unlock the doors and boot, and start the engine, without having to get the keys out of a pocket or handbag. The passive sensor inside the car can detect you approaching from a set 1.2-metre radius.

(Option on Ghia, Titanium and ST-2/ST-3)



Mechanical features

	Studio	LX	Sport	Zetec/ Zetec Climate	Ghia	Titanium	ST
Brakes							
Diagonally-split brakes with dual-line servo-assistance and ventilated front discs	●	●	●	●	●	●	●
Rear brakes – Drums	●	●	●	●	●	●	
Rear brakes – Discs (2.0 and 2.5 Duratec, 2.0 Duratorq TDCi engines only, standard on estates)	●	●	●	●	●	●	●
Anti-lock brakes (ABS) with electronic brake-force distribution (EBD)	●	●	●	●	●	●	●
Electronic Stability Programme (ESP) with Traction Assist (includes Emergency Brake Assist (EBA) and rear discs)	○	○	○	○	○	○	○ / ■ / ■+
Fuel tank							
55 litres (useable capacity) (52.7 litres on diesels)	●	●	●	●	●	●	●
Fuel cut-off – Inertia switch (petrol only)	●	●	●	●	●	●	●
Steering							
Electric Hydraulic Power-Assisted Steering (EHPAS) (not available on 1.4 and 1.6 Duratec Petrol engines)	●	●	●	●	●	●	●
Suspension and body							
Front – Independent with MacPherson struts, rebound springs, angled coil/spring damper units and lower A-arms, anti-roll bar	●	●	●	●	●	●	●
Rear – Independent Control Blade multi-link system, rebound springs, anti-roll bar	●	●	●	●	●	●	●
Rear – Self-levelling (estate only, not available with sports suspension)	○	○	○		○	○	
Sports Suspension				●		○	
Unique Suspension - Performance with monotube rear suspension							●
Turning circle							
Kerb to kerb - 10.4m	●	●	●	●	●	●	
Kerb to kerb - 11.68m							●

● = Standard ○ = Optional, at extra cost. ■ = Standard on ST-2 ■+ = Standard on ST-3

Safety and security

	Studio	LX	Sport	Zetec/ Zetec Climate	Ghia	Titanium	ST
Intelligent Protection System (IPS):							
Airbags – Drivers and front passengers*	●	●	●	●	●	●	●
Airbags – 3D front side impact	●	●	●	●	●	●	●
Airbags – Side curtain airbags deployed from the headlining		●	●	●	●	●	●
Seat belt pre-tensioners and retractors (front seats only)	●	●	●	●	●	●	●
Collapsible steering column and pedal	●	●	●	●	●	●	●
Airbags – Passengers airbag deactivation switch. (Dealer-fit option, not available with Park Assist sensors option)	○	○	○	○	○	○	○
Side impact door beams, front and rear, steel safety cage	●	●	●	●	●	●	●

Safety and security

	Studio	LX	Sport	Zetec/ Zetec Climate	Ghia	Titanium	ST
Immobiliser – Passive Anti-Theft System (PATS)	●	●	●	●	●	●	●
Alarm – Perimeter*	○	○	○	○			
Alarm – Perimeter with volume sensing (CAT 1 Thatcham approved)				○			
KeyFree System – Allows entry and ignition of vehicle without conventional key					○	○	○
Locking bonnet – Key-operated	●	●	●	●	●	●	●
Locks – High-security, anti-burst, shielded with strengthened mountings and childproof locks on rear doors	●	●	●	●	●	●	●
Locks – Central locking	●						
Locks – Remote control central/double locking		●	●	●	●	●	●
Locks - Flip Key					●	●	●
Locks - 2nd Remote Key					○	○	○
Fuel flap – Central locking linked	●	●	●	●	●	●	●
Seats – ISOFIX mounting brackets for integrated child seat	N/C	N/C	N/C	N/C	N/C	N/C	N/C**
Vehicle Identification Number (VIN) – Visible	●	●	●	●	●	●	●

● = Standard, ○ = Optional, at extra cost, N/C = No cost option.

Note: A child seat should never be placed in the front passenger seat when the Ford vehicle is equipped with an operational front passengers airbag. The safest place for children is properly restrained on the rear seat

* Standard on the 1.8 Duratorq TDCi Diesel (115PS). ** Does not apply with sculptured rear seat option

Wheel availability

	Studio	LX	Sport	Zetec/ Zetec Climate	Ghia	Titanium	ST
6x15" with 8-spoke wheelcovers and 195/65 Rx15 tyres	●						
6½x16" with 8-spoke wheelcovers and 205/55 Rx16 tyres		●					
6½x16" 6-spoke alloy with 205/55 Rx16 tyres			●				
6½x16" 5-spoke tapered alloy with 205/55 Rx16 tyres				●			
6½x16" 5x3-spoke machined alloy with 205/55 Rx16 tyres					●		
6½x16" 5-spoke alloy with 205/55 Rx16 tyres						●	
6½x17" 5-spoke alloy with 205/50 Rx17 tyres				○	○	○	
6½x17" 9x2-spoke machined alloy with 205/50 Rx17 tyres						○	
7½x18" 7-spoke anthracite/machined rim alloy with 225/40 Rx18 tyres				○	○	○	
8x18" Unique ST Alloy with 225/40 Rx18 tyres							●
Mini steel spare	●	●	●	●	●	●	□
Full-size steel spare (reduces luggage capacity by 123 litres on the 3- and 5-door, not available with 17" and 18" alloy wheels)	○	○	○	○	○	○	
Locking wheel nuts (only available on alloy wheels)			●	●	●	●	●

● = Standard, ○ = Optional, at extra cost. □ Mini spare wheel reduces luggage capacity to 282 litres (to be replaced with tyre inflator kit Q1 2006).

Committed to safety

The Ford Focus has one of the most advanced body structures with computer-optimised crush zones routing energy away from the occupants in a crash. Further protection is provided by single stage front airbags, a load limiting steering column that collapses horizontally providing more space for the driver, plus new 3D side airbags and curtain airbags (not available on Studio) that drop from the headlining to protect in side impact.



Seat belt pre-tensioners

5-10 milliseconds before the airbags inflate, the front seat belt pre-tensioners take up any slack in the webbing, keeping occupants tight in their seat to avoid impact with the inside of the vehicle.



Side airbags

The Ford Focus is equipped with front seat side airbags that are designed to provide optimum passenger protection in the event of a side impact.



Exterior features

	Studio	LX	Sport	Zetec/ Zetec Climate	Ghia	Titanium	ST
Styling							
Bodyside mouldings – Black	●	●	●	●			
Bodyside mouldings – Body colour					●	●	●
Bumpers – Body colour	●	●	●	●	●	●	●
Bumpers - Unique ST front bumper incorporating chrome foglight surround							●
Bumpers - Unique ST rear bumper incorporating chrome surround foglight and reversing light							●
Bumpers – Rear bumper scratch pad moulding	●	●	●	●	●	●	●
Door handles – Body colour				●	●	●	●
Paint – Metallic	○	○	○	○	○	○	○
Paint - Unique ST							○
Radiator grille – Black, mesh	●	●	●	●	●	●	
Radiator grille - Unique ST design, mesh							●
Radiator grille – Chrome finish surround				●	●	●	
Rocker panel mouldings - Body colour							●
Spoiler - Unique ST body colour 'single wing' design, rear mounted							●
Functional							
Door mirrors – Manual internal control, black housings, manual fold back	●						
Door mirrors – Electrically-operated and heated, black housings		●	●				
Door mirrors – Electrically-operated and heated, body colour housings				●	●	●	
Door mirrors - Electrically-operated and heated body colour housings with integrated side turn indicators							●
Heated rear window	●	●	●	●	●	●	●
Heated windscreen – Quickclear – with heated washer jets		○	○	n/a / ●	●	●	○ / ■ / ■+
Windscreen – Solar Reflect Windshield					○	○	○
Electronic tailgate release	●	●	●	●	●	●	●
Park Assist – Rear sensors		○	○	○	○	○	○
Roof rail carrier system – Black (estate only)	●	●	●	●	●	●	
Roof rail carrier system – Aluminium effect finish (estate only)				○	○	○	
Roof rail crossbars – Black (estate only)	○	○	○	○	○	○	
Tow bar – Fixed or detachable (including 13-pin electrical kit) (fixed not available on estate with self-levelling suspension)	○	○	○	○	○	○	
Wipers – Front, variable intermittent with electric wash	●	●	●	●	●	●	●
Wipers – Tailgate, intermittent with electric wash and auto reverse wipe	●	●	●	●	●	●	●
Wipers – Rain-sensing wipers					●	●	○

Exterior features

	Studio	LX	Sport	Zetec/ Zetec Climate	Ghia	Titanium	ST
Lights							
Adaptive Front Lighting System (not available with Bi-xenon headlights)*		○	○	○	○	○	○
Auto-lighting					●	●	○
Headlamp Delay				●	●	●	●
Front fog lights			●	●	●	●	●
Bi-xenon headlights with automatic headlight levelling and washer jets				○	○	○	○ / ■ / ■+
Rear fog light, reversing light, high-mounted rear brake light	●	●	●	●	●	●	●

● = Standard, ○ = Optional, at extra cost, n/a = Not available. ■ = Standard ST-2. ■+ = Standard ST-3. * Not available with Focus ST-2 and Focus ST-3

Audio and communication systems

	Studio	LX	Sport	Zetec/ Zetec Climate	Ghia	Titanium	ST
Stereo radio/cassette – Model 5000C, RDS EON, PTY, Keycode anti-theft coding and 2 front speakers	●						
Stereo radio/CD – Model 6000CD, RDS EON, PTY, Keycode anti-theft coding and 6 speakers (4 front, 2 rear)	○	●	●	●	●	●	●
Sony audio system – Sony CD – Stereo radio/CD/MP3, CD, RDS EON, PTY, MP3 compatibility, Keycode anti-theft coding, DSP, external AUX jack located in glovebox, 8 premium speakers (4 front, 4 rear)		○	○	○	○	●	○ / ■
Sony audio system – Sony 6CD – Stereo radio/6 disc in-dash CD autochanger, 6CD, RDS EON, PTY, Keycode anti-theft coding, DSP, external AUX jack located in glovebox, 8 premium speakers (4 front, 4 rear)		○	○	○	○	○	○ / ■+
Remote audio controls (column-mounted)		●	●	●	●	●	●
CD navigation system (allowing CD audio listening whilst active route guidance via corridor function), 4" monochrome display, stereo radio/CD, 6 speakers (4 front, 2 rear) (includes external CD autochanger located under front passenger's seat)		○	○	○	○	○	
Touchscreen DVD navigation system – 7" touchscreen, colour display, Stereo radio/CD/MP3, external AUX jack located in glovebox, 8 premium speakers (4 front, 4 rear) (includes DEATC air conditioning and external CD autochanger located under front passenger's seat).*					○	○	○
Rear seat audio system – Two headphone sockets with independent volume and audio controls (requires either Sony audio systems or DVD navigation system)		○	○	○	○	○	
MultiMedia DVD system – Model 7500 – Headliner-mounted DVD player with flip-down 7" screen with infrared remote control and two infrared headphones (not available with sunroof) (only available on estate)					○	○	
Basic telephone pack*** – Contains exterior roof antenna, vehicle adaptor cable and interface bracket (hands-free cradle must be fitted at your Dealer at extra cost) Does not include mobile phone.		○	○	○	○	○	

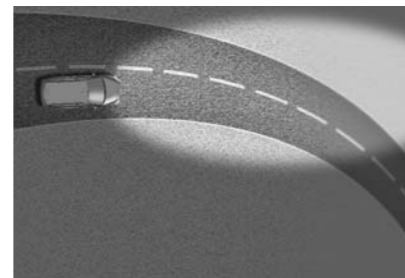
Adaptive Front Lighting System

The Ford Focus is the first car in its class available with halogen-based Adaptive Front Lighting System. The system automatically adjusts the headlights to aim where you are going, making for safer and more enjoyable night driving.



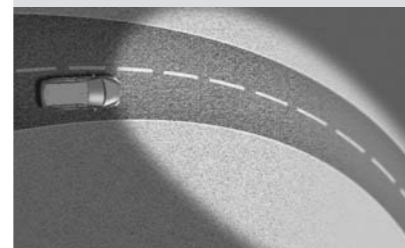
Cornering with ordinary headlights

At night, conventional headlights shine straight ahead of the car, illuminating just the outside of the bend.



Cornering with the Adaptive Front Lighting System

With the Adaptive Front Lighting System, the headlight unit swivels left and right as the steering wheel is turned, illuminating both your line of sight and the line along which the car is travelling.



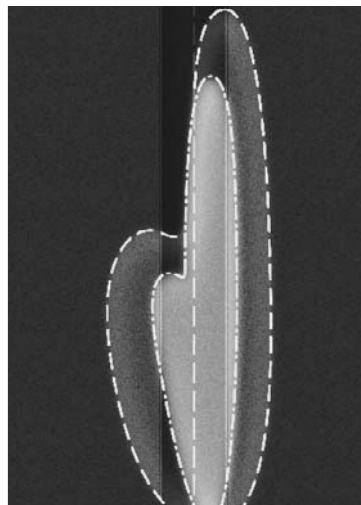
Bi-xenon Headlights

High Intensity Discharge bi-xenon headlights (HID) have a stylish, high-tech look and deliver around twice the intensity of conventional bulbs for better illumination of the road ahead. (Option on Zetec, Ghia, Titanium and ST. Standard on ST-2 and ST-3)



High-performance headlights

The Ford Focus is equipped with halogen headlights for class-leading illumination and safer night driving. Optional bi-xenon headlights are also available (from Zetec). Delivering a brighter light than conventional halogen bulbs, they consume less energy and enjoy a longer service life.



Audio and communication systems

	Studio	LX	Sport	Zetec/ Zetec Climate	Ghia	Titanium	ST
Advanced telephone pack – Bluetooth® Hands-Free and Voice Control System (system without cradle) Does not include mobile phone.**		○	○	○	○	○	○
Premium telephone pack – Bluetooth® Hands-Free and Voice Control System (hands-free cradle must be fitted at your Dealer at extra cost) Does not include mobile phone.**		○	○	○	○	○	○

● = Standard, ○ = Optional, at extra cost. ■ = Standard ST-2. ■ + = Standard ST-3 * Excludes external CD autochanger when ordered with ST, also deletes Sony ICE from Focus ST-2 and Focus ST-3 **Voice Control System functionality requires compatible options at extra cost. *** It is an offence for drivers to use a hand-held mobile phone or similar device whilst driving.

Interior features

	Studio	LX	Sport	Zetec/ Zetec Climate	Ghia	Titanium	ST
Comfort and convenience							
Accessory socket with stowage tray	●	●	●	●	●	●	●
Air recirculation switch	●	●	●	●	●	●	●
Air conditioning – CFC-free	○	●	●	n/a / ●	●	●	●
Air conditioning – CFC-free with Dual Electronic Automatic Temperature Control (DEATC)					○	○	○
Adjustable Pedals ●+					○	○	○
Centre console – Front cup holders, pen holder, and rear heating ducts	●	●	●	●	●	●	●
Centre console – Rubber stowage compartment mat		●	●	●	●	●	●
Clock – Digital (as part of the ICE display)	●	●	●	●	●	●	●
Glovebox – Includes CFC-free air conditioning-driven cooling capacity					●	●	●
Grab handles – Damped front and rear folding with rear coat hooks	●	●	●	●	●	●	●
Mirror – Auto-dimming rear-view					●	●	●
Stowage unit – Located in upper instrument panel with lid					●	●	●
Sunblinds – Integrated pull-up on rear doors (not available on 3-door)		○	○	○	○	○	○
Sunglasses holder					●	●	●
Sunroof – Electrically-operated, tilt/slide (not available with MultiMedia DVD system)		○	○	○	○	○	○
Sunvisors – Driver's and passenger's with mirror and cover, illuminated on Ghia, Titanium and ST.	●	●	●	●	●	●	●
Windows – Front, electrically-operated with one-touch lowering on driver's side (3-door only on Titanium)	●	●	●	●	●	●	●
Windows – Front and rear, electrically-operated with one-touch lowering/closing, anti-trap feature and global opening/closing (not available on Titanium or Focus ST 3-door)					●	●	○
Seat and seat belts							
Front seat – Driver's manual height adjustment	●	●	●	●	●	●	●
Front seat – Driver's lumbar adjustment					●	●	●

Interior features

	Studio	LX	Sport	Zetec/ Zetec Climate	Ghia	Titanium	ST
Front seat – Driver's 2-way power adjustment with adjustable lumbar support (includes front passenger seat 4-way pump up and down, slide fore/aft, rotary recliner and mechanical lumbar adjustment)		○	○	○	○	○	
Front seat – Driver's 6-way power adjustment with adjustable lumbar support (not available with 3-door) (includes front passenger seat 4-way pump up and down, slide fore/aft, rotary recliner and mechanical lumbar adjustment)				○	○	○	
Front seat – Recaro Driver's 8-way manual adjustment with adjustable lumbar support							●
Front seats – Anti-submarining, fully reclining with height-adjustable head restraints	●	●	●	●	●	●	●
Front seats – Tipping (3-door only)	●	●	●	●		●	●
Seats – Recaro Pack 1 - Passenger's 8-way manual adjustment with adjustable lumbar support and rear 'sculptured' seat cushion with two adjustable head restraints *							○
Front seats - Recaro style							●
Rear seat – 60/40 split back and cushion with two height-adjustable head restraints	●	●	●	●	●	●	●
Rear seat – Centre rear head restraint (not available on 3-door models except on Titanium, and not available with Recaro 'sculptured' rear seat cushion)		●	●	●	●	●	○
Rear seat – Folding centre armrest					●	●	
Seats – Partial leather-trimmed						●	
Seats – Leather-trimmed (includes driver's 6-way power adjustment on 5-door (2-way on 3-door) with heated front seats)				○ / □	○ / □	○ / □	
Seats - Recaro Leather trimmed (includes driver's and passenger heated front seats with 10-way manual adjustment and adjustable lumbar support and rear 'sculptured' cushion with two adjustable head restraints)*							○ / ■ +
Stowage pockets – Front seat backs		●	●	●	●	●	●
Seat belts – Front, inertia reel, with grabbers, pre-tensioners and height-adjustable mounts. Rear, three inertia reel, lap and diagonal	●	●	●	●	●	●	●
Carpet and trim							
Door handles – Aluminium-effect finish		●	●	●	●	●	●
Floor mats – Carpet slip mats, front					●	●	
Floor mats – Premium velour slip mats, front and rear				○ / □	○ / □	○ / □	●
Gear lever knob – Satin aluminium-effect insert	●	●	●	●			
Gear lever knob – Leather with silver-effect insert and aluminium-effect finish ring					●	●	●
Handbrake release button – Aluminium-effect finish				●	●	●	●
Pedal covers - Aluminium finish							●
Satin aluminium-effect finish instrument cluster rings				●	●	●	●
Satin aluminium-effect finish instrument pointer hubs	●	●	●	●	●	●	●

Bluetooth® Hands-Free Phone

Bluetooth® Hands-Free Phone and the Voice Control System technology provides a wireless mobile phone connection with voice recognition control for audio, phone and optional DEATC and navigation systems. Each of these options are available at extra cost, please ask your authorized Ford dealer for details. (Option from Ghia at extra cost)



DVD navigation system

Keep on the right road with the DVD navigation system. Featuring a 7" full-colour touch-screen display, the system provides easy-to-follow audio-visual directions to your destination. Also incorporates audio and climate system controls, plus an external AUX jack in the glovebox.

(Option on Ghia, Titanium, ST-2 and ST-3)



Air conditioning with Dual Electronic Automatic Temperature Control (DEATC)

Dual-zone air conditioning allows both the driver and front passenger to control the temperature in their area individually. This feature can also work in conjunction with the Voice Control System.

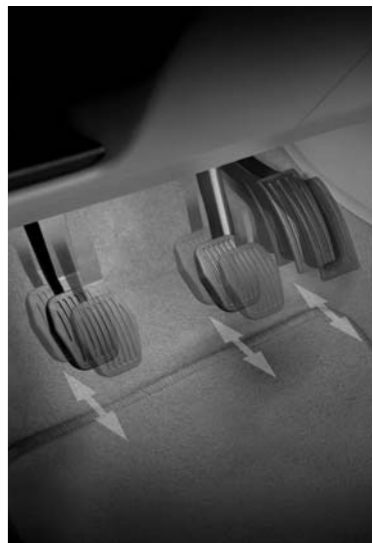
(Option on Ghia, Titanium, ST-2 and ST-3)



Adjustable pedals

People come in different shapes and sizes. So adjustable brake, accelerator and clutch pedals are available as an option, allowing you to move them electrically to precisely the right position for your optimum comfort and safety.

(Option on Ghia, Titanium and ST) (Available 2006)



Interior features

	Studio	LX	Sport	Zetec/ Zetec Climate	Ghia	Titanium	ST
Scuff plates – Front silver					●	●	
Scuff plates - Front, aluminium finish with unique 'ST' logo							●
Unique electro-illumincation dials							●
Instruments and controls							
Cruise Control					●		
Headlight levelling	●	●	●	●	●	●	○
Trip/fuel computer, incorporating exterior air temperature display and low temperature warning lights				●	●	●	
Trip/fuel computer, incorporating exterior air temperature display and low temperature warning lights and oil pressure, oil temperature and turbo gauges							●
Warning indicators for glow plugs on (diesel only), brake system, airbags, door ajar and 'lights on' warning alarm	●						
Warning indicators for glow plugs on (diesel only), brake system, airbags, door ajar, low fuel level, low washer fluid level and 'lights on' warning alarm		●	●	●	●	●	●
Illuminated recirculation heater controls – 4-speed fan, with pollen and active carbon filters and direction control, two dedicated side window demists and rear compartment ducts (not if specified with DEATC air conditioning)	●	●	●	●	●	●	●
Steering column – Reach and rake adjustable	●	●	●	●	●	●	●
Steering wheel – Leather-trimmed, 3-spoke, with silver-effect accents			●	●		●	
Steering wheel – Leather-trimmed, 4-spoke, with silver-effect accents							
Steering wheel – Leather-trimmed, 4-spoke, with silver-effect accents and Cruise Control					●		
Steering wheel - Leather-trimmed, 3-spoke unique ST design							●
Interior lighting							
Courtesy light – Front overhead with theatre-style dimming and delayed switch-off					●	●	●
Courtesy lights – Front overhead with two map lights and front footwell light					●	●	●
Courtesy lights – Rear overhead dome courtesy light					●	●	
Submarine Lighting							●
Luggage compartment							
Auxiliary power socket (estate only)	●	●	●	●	●	●	
Carpet floor mat – Reversible (estate only)		○ / □	○ / □	○ / □	○ / □	○ / □	
Courtesy light	●	●	●	●	●	●	●
Load barrier retention net (estate only)		○ / □	○ / □	○ / □	○ / □	○ / □	
Stowage – Cargo net (estate only)					●	●	
Tie-down hooks					●	●	●
Tonneau cover (estate only)	●	●	●	●	●	●	

● = Standard, ○ = Optional, at extra cost, □ = Part of an option pack, at extra cost, n/a = Not available. ■+ = Standard on ST-3 *Vehicle is homologated as a 4-seater, ●+ Available 2006.

Option packs

	Studio	LX	Sport	Zetec/ Zetec Climate	Ghia	Titanium	ST
Focus ST-2 - Sony CD, Bi-xenon Headlights, Heated Front Screen, ESP							●
Focus ST-3 - Recaro Front & Rear Leather Seats, Heated Front Screen, Bi-xenon Headlights, Sony 6CD, ESP, includes 'sculptured' rear cushion and two adjustable head restraints*							●
Exterior Styling Pack 1 - Overhead ST stripes							○
Exterior Styling Pack 2 - Side ST stripes							○
Interior Styling Pack – Brushed stainless steel scuff plates with recessed logo, unique gear knob and handbrake handle design and velour front and rear floor mats				○	○	○	
Climate Pack – CFC-free air conditioning and 'Quickclear' heated windscreen				n/a / ●			
Leather Styling Pack – Leather-trimmed seats, driver's 6-way power adjustment (2-way on 3-door) and heated front seats, and metallic paint				○	○	○	
Smoker's Pack – Accessory socket is replaced with cigar lighter	○	○	○				●
Premium Smoker's Pack – Contains lidded ashtray, and accessory socket is replaced with cigar lighter				○	○	○	
Traveller Pack – Load barrier retention net and reversible luggage compartment carpet floor mat (estate only)		○	○	○	○	○	

● = Standard, ○ = Optional, at extra cost, n/a = Not available. *Vehicle is homologated as a 4-seater

Facia-top stowage

Lidded compartment in the centre of the instrument panel is ideal for storing maps, passports and other papers.

(Standard on Ghia and Titanium)



Centre stowage

The centre stowage area provides a convenient place to put small items you might need on the move. Ideal for cans of drink, tissues, CDs and other essential items. Includes a pen holder, cup holders and ashtray.



Integrated sunblinds

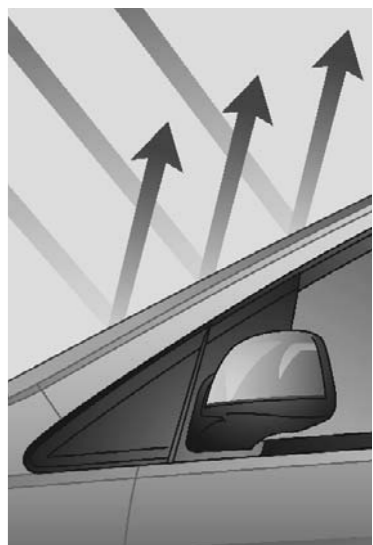
Can be quickly and easily drawn to filter out unwanted sunlight from the rear compartment.

(Option, not available on Studio or 3-door)



Solar Reflect Windshield

The Solar Reflect Windshield blocks nearly five times the level of solar radiation as standard tinted glass, helping to keep the interior cooler and significantly improving the efficiency of the air conditioning. (Option on Ghia, Titanium and ST)



Colour and trim

Model	Studio		LX		Sport		Zetec/ Zetec Climate			
Seat trim	Stripy	Stripy	Humy	Humy	Humy	Humy	Rack	Leather*	Rack	Leather*
Seat trim colour	Dark Flint	Generic Blue/ Dark Flint	Dark Flint	Medium Light Stone	Dark Flint	Medium Light Stone	Ebony	Ebony	Infinity Blue	Infinity Blue
Environment colour	Dark Flint	Dark Flint	Dark Flint	Ebony/ Medium Light Stone	Dark Flint	Ebony/ Medium Light Stone	Dark Flint	Dark Flint	Infinity Blue/ Medium Light Stone	Infinity Blue/ Medium Light Stone
Upper instrument panel colour	Ebony	Ebony	Ebony	Ebony	Ebony	Ebony	Ebony	Ebony	Infinity Blue	Infinity Blue
Lower instrument panel colour	Dark Flint	Dark Flint	Dark Flint	Medium Light Stone	Dark Flint	Medium Light Stone	Dark Flint	Dark Flint	Medium Light Stone	Medium Light Stone
3-door	●	●	●	-	●	-	●	●	●	●
4-door	-	-	-	-	-	-	-	-	-	-
5-door	●	●	●	●	●	●	●	●	●	●
Estate	●	●	●	●	●	●	●	●	●	●
Solid body colours										
Colorado Red	●	-	●	●	●	●	●	●	-	-
Diamond White	-	●	●	●	●	●	●	●	●	●
Deep Navy	-	●	●	●	●	●	●	●	●	●
Metallic body colours*										
Aquarius ***	-	●	●	-	-	-	●	●	●	●
Electric Orange	-	-	-	-	-	-	-	-	-	-
Ink Blue	-	●	●	●	●	●	●	●	●	●
Jeans	-	●	●	●	●	●	●	●	●	●
Kelp Green	●	-	●	●	●	●	●	●	-	-
Moondust Silver	-	●	●	●	●	●	●	●	●	●
Panther Black	-	●	●	●	●	●	●	●	●	●
Performance Blue	-	-	-	-	-	-	-	-	-	-
Sea Grey	-	●	●	●	●	●	●	●	●	●
Tango Red	-	●	●	●	●	●	●	●	-	-
Tonic	-	●	●	●	●	●	●	●	●	●

● = Available. - = Not available * = Optional at extra cost. *** = Body colour is not available on 4-door models, or Valencia production 5-door models. Please consult your Dealer for further details.

Interior Styling Pack

Featuring luxury velour carpet mats, unique scuff plates with recessed Focus logo, and unique design gear knob and handbrake cover.

(Option and accessory)

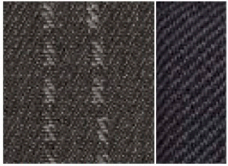


Premium velour carpet floor mats

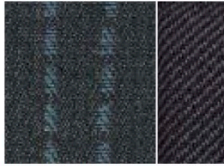
Made to perfectly complement your chosen interior. Driver's mat is fixed to avoid slippage and interference with the foot pedals.

(Option and accessory)

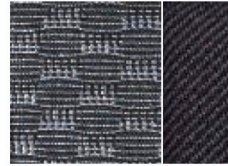




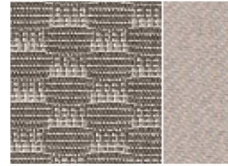
Stripy in Dark Flint
seat facing
Twill in Dark Flint
seat sides



Stripy in Generic Blue
seat facing
Twill in Dark Flint
seat sides



Humy in Dark Flint
seat facing
Twill in Dark Flint
seat sides



Humy in Medium Light Stone
seat facing
Twill in Medium Light Stone
seat sides



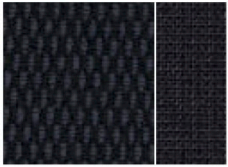
Colorado Red
Solid body colour



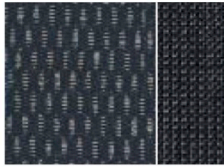
Deep Navy
Solid body colour



Diamond White
Solid body colour



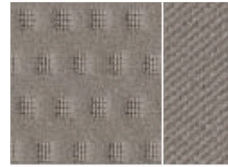
Rack in Ebony
seat facing
Mondus in Ebony
seat sides



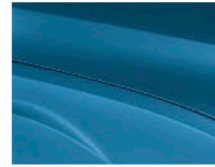
Rack in Infinity Blue
seat facing
Mondus in Infinity Blue
seat sides



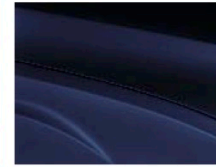
Cubical in Ebony
seat facing
Kent Light in Ebony
seat sides



Cubical in Medium Light Stone
seat facing
Kent Light in Light Stone
seat sides



Aquarius
Metallic body colour*



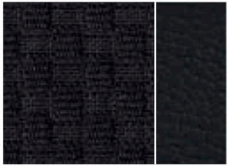
Ink Blue
Metallic body colour*



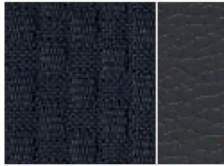
Jeans
Metallic body colour*



Kelp
Metallic body colour*



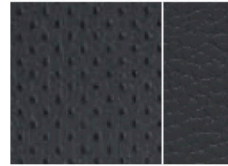
Span in Ebony
seat facing
Verona leather in Ebony
seat sides



Span in Infinity Blue
seat facing
Verona leather in Infinity Blue
seat sides



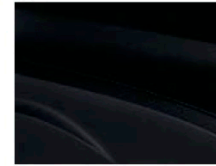
Louis leather in Ebony
seat facing
Verona leather in Ebony
seat sides



Louis leather in Infinity Blue
seat facing
Verona leather in Infinity Blue
seat sides



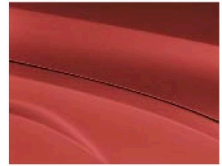
Moon dust Silver
Metallic body colour*



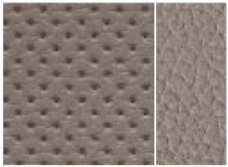
Panther Black
Metallic body colour*



Sea Grey
Metallic body colour*



Tango Red
Metallic body colour*



Louis leather in Medium Light Stone
seat facing
Verona leather in Medium Light Stone
seat sides



Tonic
Metallic body colour*



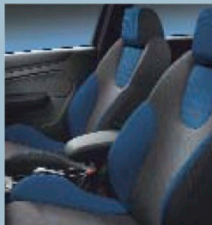
Electric Orange
Tri-coat metallic body colour (ST only)*



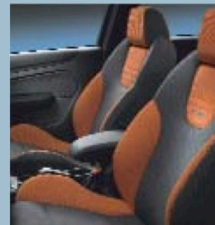
Performance Blue
Metallic body colour (ST only)



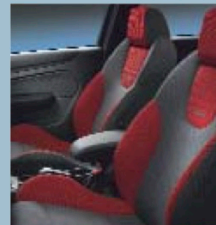
Recaro Mondus in Dark Flint
seat facing
Volume in Anthracite
seat sides



Recaro Mondus in Dark Flint
seat facing
Volume in Generic Blue
seat sides



Recaro Mondus in Dark Flint
seat facing
Volume in Generic Orange
seat sides



Recaro Mondus in Dark Flint
seat facing
Volume in Generic Red
seat sides

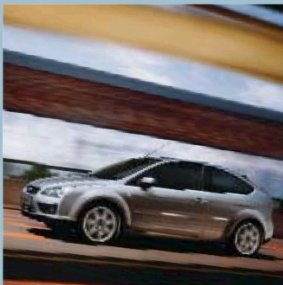


Recaro Louis Leather in Ebony
seat facing*
Verona leather in Ebony
seat sides

The Ford Focus is covered by the Ford Perforation Warranty for 12 years from the date of first registration. Subject to terms and conditions.
*Metallic body colours and leather trim are options at extra cost.
Note The car images used are to illustrate body colours only and may not reflect current specification. Colours and trims reproduced within this brochure may vary from the actual colours, due to the limitations of the printing processes used.

Ghia				Titanium			ST		
Cubical	Leather*	Cubical	Leather*	Span/Partial leather	Leather*	Span/Partial leather	Leather*	Recaro Mondus	Recaro Embossed leather*
Ebony	Ebony	Medium Light Stone	Medium Light Stone	Ebony	Ebony	Infinity Blue	Infinity Blue	Dark Flint	Dark Flint
Dark Flint	Dark Flint	Ebony/ Medium Light Stone	Ebony/ Medium Light Stone	Dark Flint	Dark Flint	Infinity Blue/ Medium Light Stone	Infinity Blue/ Medium Light Stone	Dark Flint	Dark Flint
Ebony	Ebony	Ebony	Ebony	Ebony	Ebony	Infinity Blue	Infinity Blue	Dark Flint	Dark Flint
Dark Flint	Dark Flint	Medium Light Stone	Medium Light Stone	Dark Flint	Dark Flint	Medium Light Stone	Medium Light Stone	Dark Flint	Dark Flint
-	-	-	-	-	-	-	-	-	-
-	-	-	-	-	-	-	-	-	-
-	-	-	-	-	-	-	-	-	-
-	-	-	-	-	-	-	-	-	-
-	-	-	-	-	-	-	-	DR	-
-	-	-	-	-	-	-	-	DA/DB/DR	-
-	-	-	-	-	-	-	-	-	-
-	-	-	-	-	-	-	-	DO	-
-	-	-	-	-	-	-	-	-	-
-	-	-	-	-	-	-	-	-	-
-	-	-	-	-	-	-	-	-	-
-	-	-	-	-	-	-	-	-	-
-	-	-	-	-	-	-	-	DA/DR	-
-	-	-	-	-	-	-	-	DA/DR	-
-	-	-	-	-	-	-	-	DB	-
-	-	-	-	-	-	-	-	DA/DR	-
-	-	-	-	-	-	-	-	-	-
-	-	-	-	-	-	-	-	-	-

Interior trim colour: E - Ebony, DA - Dark Flint with Anthracite, DB - Dark Flint with Generic Blue, DO - Dark Flint with Generic Orange, DR - Dark Flint with Generic Red, / - Choice of colour. *Metallic paint and leather trim are optional, at extra cost.



Take a last look at the Ford Focus. By now you'll know that it looks more dynamic than ever. You'll know its sense of quality and style is second to none. And that it's packed with innovative new technology, designed to make your life easier, safer and more enjoyable. But these pages can only tell part of the story. The true pleasure comes when you drive the Ford Focus and experience the finer things in life for yourself.

MY 2006 GBR en



Collect Nectar points at participating Ford Dealers now. So keep a look out for the latest Ford offers at www.ford.co.uk/nectar or call the Ford Information Service on 0845 7111 888.*

Dealer



Allergy-tested interior
All materials used in the manufacture of the interior of the new Ford Focus meet the strict requirements of the TÜV TOXPROOF Criteria Catalogue for Vehicle Interiors by the TÜV Produkt und Umwelt GmbH and are designed to minimise the risk of allergic reactions.
With doors and windows closed, the interior materials selected - together with the integrated pollen filter - protect the passengers against most allergising particles from the outdoor air. At higher temperatures, the additional use of air conditioning is recommended.

Bluetooth*
The Bluetooth® word mark and logos are owned by the Bluetooth SIG, Inc. and any use of such marks by Ford Motor Company is under licence. Other trademarks and trade names are those of their respective owners.

Published by Ford Motor Company Limited, Brentwood, Essex, England. Registered in England No. 235446. FA 1491/3. E.N. 301154. FoE H22E. PN 572502/1005/300m/GBR en November 2005. © Ford Motor Company Limited.

www.ford.co.uk

The Government fuel figures do not express or imply any guarantee of the fuel consumption of any particular car. The cars themselves have not been tested and there are inevitably differences between individual cars of the same model. In addition, a car may incorporate particular modifications. Furthermore, the driver's style and road and traffic conditions, as well as the extent to which the car has been driven and the standard of maintenance, will affect its fuel consumption. Insurance groups are only as recommended by the Association of British Insurers. You should always consult your insurance adviser for confirmation. **Illustrations, descriptions and specifications.** This catalogue was correct at the time of going to print. However, Ford policy is one of continuous product development. The right is reserved to change specifications, colours and prices of the models and items illustrated and described in this publication at any time. For the latest details always consult your Ford Dealer. **Optional equipment.** Throughout this publication, wherever a feature is described as being an 'Option' or 'Optional Fitment/Pack', etc., you should assume that it will be at extra cost to the base vehicle, unless specifically stated to the contrary. All models and colour combinations are subject to availability. *Ford Information Service. Calls are charged at national rate and may be recorded for training purposes.

Designed for living. Engineered to last



