

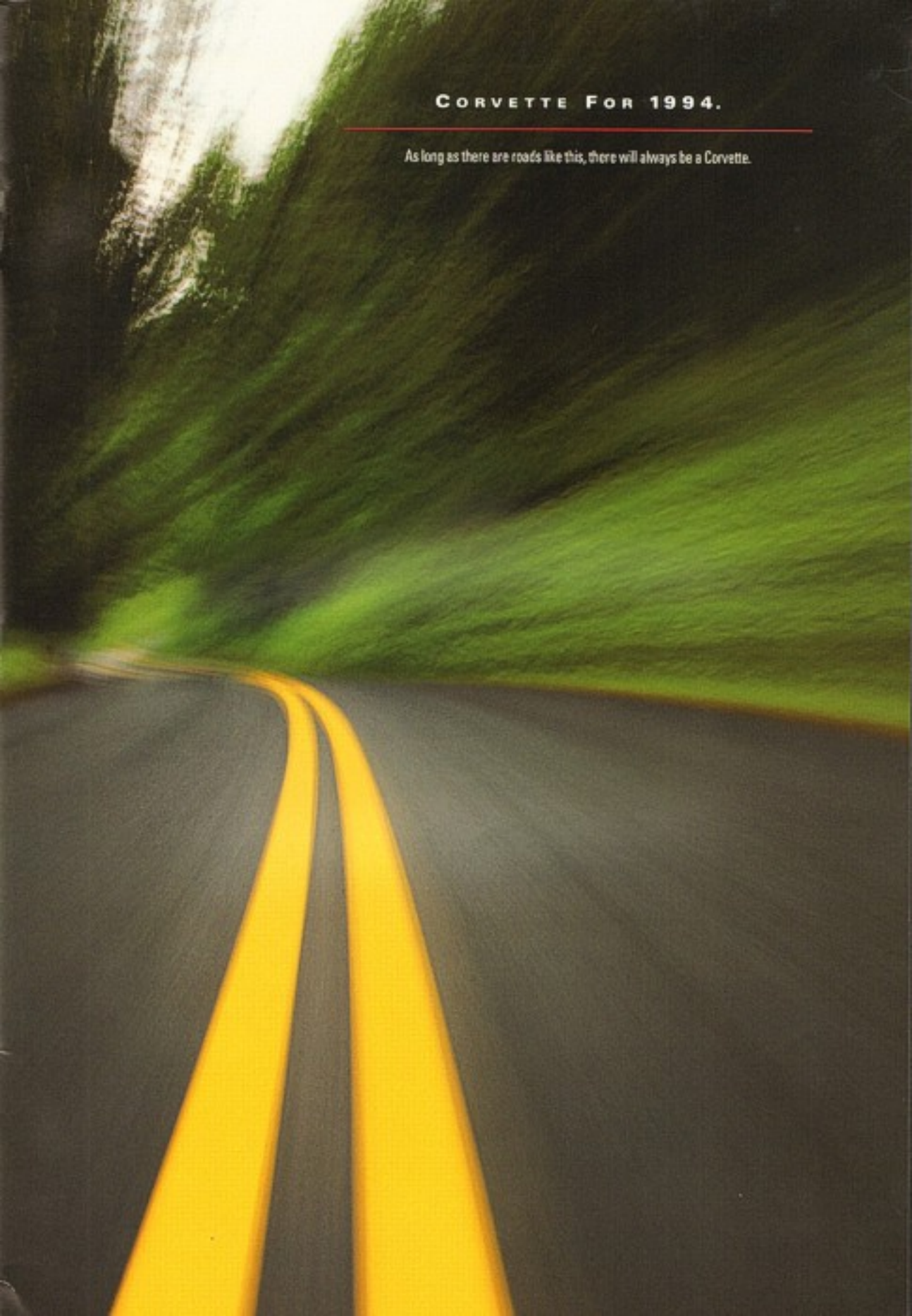


CORVETTE



CORVETTE FOR 1994.

As long as there are roads like this, there will always be a Corvette.





AMERICA'S SPORTS CAR.



IT STILL TAKES
YOUR BREATH AWAY.



4
CORVETTE



TRADITION HAS EVERYTHING
TO DO WITH IT.

Afficionados can recite a litany of "firsts" that have made Corvette one of the world's most desired sports cars. Fiberglass body panels, fuel-injected "small-block" V8s, four-wheel disc brakes and ABS are but a few of the innovations that have defined "Corvette" for generations of car lovers.

The 1994 Corvette reflects this tradition of leadership with the most advanced version ever of the 5.7 Liter V8, the 330-hp LT1 featuring new Sequential-Port Fuel Injection. Other reasons this legend just keeps getting better and better include

a sensational 6-speed manual transmission (or, if you prefer, a new electronically controlled 4-speed automatic), a sophisticated fully independent suspension with precision-crafted aluminum componentry, and an advanced traction-control system that helps utilize all available traction by regulating wheel spin.

By any objective standard of performance, the 1994 Corvette is world-class. However, there's more to this story, and it is best experienced behind the wheel of a new Corvette.



SEE THE DIFFERENCE
The Corvette Convertible's folding top features a new glass rear window with electric defogger for improved durability and visibility.



CORVETTE

SDM 731



THE PERFORMANCE STARTS AS SOON AS YOU'RE SEATED.

First impressions do count. You may even remember the first time you ever saw America's sports car. Now there's a reason to fall in love all over again: the 1994 Corvette with its optional sport bucket-seat interior.

While the dramatic style of this new option is easy to see, it's the level of comfort that makes this the best Corvette interior ever.

These leather-trimmed sport seats feature contoured bolsters for excellent support and wider cushions for maximum comfort. The six-way power

adjustment and power lumbar support ensure that you'll feel just right behind the new two-spoke, leather-wrapped Corvette steering wheel.

The 1994 redesign goes far beyond bold new buckets. Every '94 Corvette features driver- and passenger-side air bags, a beautifully restyled instrument panel, plush new carpeting, and convenient new in-door storage areas.

So go ahead. Drive a new Corvette. Really drive it. We're betting your next impression will be the same as your first. *I want this car.*



COMFORT WITH CONVENIENCE
Controls for the optional six-way power seats and optional Selective Ride Control are conveniently located on the center console.

WAIT TILL YOU GET YOUR HANDS ON IT.

Picture yourself here. The newly styled instrument panel sweeps around you. Controls are within easy reach. Instrumentation is a well-planned mix of digital readouts (speedometer, volts, oil temperature, coolant temperature, instant or average fuel economy, range) and analog gauges (tachometer, water temperature, oil pressure, oil

temperature and voltmeter). Our racing experience tells us this is an excellent way to communicate information instantly and clearly.

Also standard: PASS-Key II, a totally passive theft-deterrent system that is designed to help keep your new Corvette safe and secure. Only your special ignition key starts your 1994 Corvette.





PASSIVE KEYLESS ENTRY

A unique-to-Corvette standard feature. When set to do so, your key fob unlocks one or both doors (your option) as you approach your Corvette and locks them as you leave. This is a totally passive system; you do nothing. There's even a built-in security feature that prevents the doors from locking when the keys are left in the ignition.





WE'RE NOT MAKING IT EASY FOR YOU THIS YEAR.

You've already seen one beautiful Corvette interior. Here's another. And this one's standard.

All-new bucket seats feature soft leather seating surfaces. Significantly, the contours are revised to provide maximum comfort for a wider range of people shapes and sizes.

The new look extends to the instrument panel, the deeper carpeting, and the restyled door panels. What hasn't changed: Corvette is still one of the world's best-equipped two-seaters. Standard convenience features include power windows with a

driver's "Express-Down" feature, power door locks, Electronic Speed Control, illuminated visor mirrors, and air conditioning with CFC-free refrigerant.

You'll also appreciate the Passive Keyless Entry system that locks or unlocks your doors as you leave or approach your Corvette, the proven PASS-Key II theft-deterrent system, the new leather-wrapped adjustable steering wheel, and the thoughtfully placed courtesy lamps.

So which interior will it be? In a 1994 Corvette, there is no wrong answer.



CONVENIENT STORAGE

The 1994 Corvette features four convenient storage compartments, one in each door, one in the center console, and one behind the passenger seat.



DUAL AIR BAGS

Driver- and passenger-side air bags are standard in every '94 Corvette. Remember to always wear safety belts, even in cars equipped with air bags.

ROCK AND ROLL
NEVER SOUNDED SO GOOD.

Listening to music in a Corvette is not like listening to your home stereo. It's better.

Delco and Delco/Bose sound systems are tuned exactly to the acoustics of Corvette. From speaker design and placement to receiver features and controls, music in a Corvette is a carefully considered science.

Delco AM/FM Stereo With Cassette Tape Player

This high-performance stereo is standard in the Coupe and the Convertible. Features include cassette tape player with automatic reverse, electronic tuning, four speakers, power antenna, and an integral digital clock.

Delco/Bose Gold Series AM/FM Stereo

With Cassette Tape Player

The gold standard in automotive sound. Features include six tuned Bose speakers with 200 watts of natural sound, and a cassette tape player with auto-reverse. This Delco/Bose system is optional in Corvette Coupe and Convertible.

Delco/Bose Gold Series AM/FM Stereo With

Compact Disc Player and Cassette Tape Player

This outstanding top-of-the-line Corvette sound system is standard in the ZR-1 and optional in other models. In addition to the features of the radios listed above, this six-speaker stereo features an integral compact disc player and a cassette tape player. Another world-class feature of this stereo is automatic speed-compensated volume: the faster you go, the louder the volume.

STOP
PLAY

1
REV

2
FF

3
COMP

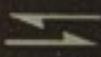
▲
EJCT

4
REPT

5
SRCH

6
SCAN

NR



Delco BOSE
GOLD SERIES

15

CORVETTE



THE LT1: THE VERY HEART OF THE CORVETTE LEGEND.

Horsepower alone doesn't make a great sports car. You might think that's a strange admission coming from the makers of Corvette, but it is really the philosophy that has guided Corvette engine development ever since our first V8.

Balanced performance is what you really want, and it's this very quality that has made the Chevrolet "small-block" V8 one of the most successful engines in automotive history.

Fast-forward to 1994, and the Corvette LT1 V8. This 5.7 Liter V8 serves up a remarkable blend of overall power, acceleration, and smoothness. Performance is enhanced by new Sequential-Port

Fuel Injection, a system that optimizes combustion by precisely matching fuel delivery to each cylinder. Also new: a more powerful ignition system that provides outstanding cold-start performance under severe conditions.

The only real decision for the enthusiast should you choose the 6-speed manual transmission or the new electronically controlled 4-speed automatic. Both are perfectly matched to the high torque characteristics of the LT1 V8.

As for horsepower, the LT1 makes 300 at 5000 rpm. No other production small-block V8 has ever delivered more.



SIX SPEEDS FORWARD
The Corvette six-speed manual transmission (a no-cost option) enhances the performance of the LT1 V8 with its carefully chosen gear ratios.



SEAMLESS PERFORMANCE
A new electronically controlled 4-speed automatic transmission delivers precise, computer-selected shift quality. The transmission and engine are regulated by a new electronic powertrain control module, for smooth, consistent performance and enhanced drivability.



STRAIGHT-LINE PERFORMANCE IS ONLY PART OF THIS STORY.

The Corvette four-wheel independent suspension does the seemingly impossible: crisply handling corners and harnessing horsepower while maintaining excellent ride quality. The technology includes variable-rate front and rear transverse springs that function with front and rear stabilizer bars to help filter out road harshness while reducing lean and sway in high-speed maneuvers. High-strength forged-aluminum suspension components reduce undesirable "unsprung" weight, and the unique five-link independent rear suspension contributes to the poised, balanced feel of Corvette. High-performance Goodyear Eagle GS-C tires are an integral part of the chassis dynamics.

OPTIONAL SELECTIVE RIDE CONTROL

Selective Ride Control is a computerized system that allows the driver to select from one of three shock absorber damping levels (Touring, Sport or Performance) via a console-mounted switch. It is programmed for six automatic gradations of firmness within each mode, with firmness increasing as vehicle speed increases.

COMPETITION-PROVEN PERFORMANCE

The bottom line? The 1994 Corvette is the refined, retuned version of the only car that has won six straight championships in SCCA-sponsored showroom stock racing. Isn't it time you put one in your corner?



RACING-INSPIRED FRONT SUSPENSION
The Corvette front suspension features high-strength forged-aluminum componentry and quick-ratio power rack-and-pinion steering.



FULLY INDEPENDENT REAR SUSPENSION
A unique 5-link independent rear suspension with a transverse monoleaf spring helps put power to the pavement.

THE ALL-WEATHER SPORTS CAR.

Any high-performance car can show you a good time on clean, dry roads. Corvette expands the very definition of performance with this broader concept, "The All-Weather Sports Car."

Now you can drive the 300-hp sports car of your dreams ... in the rain, even in the snow ... thanks to integrated performance systems which include Traction Control, four-wheel anti-lock brakes and Goodyear Eagle GS-C tires.

How Traction Control Works

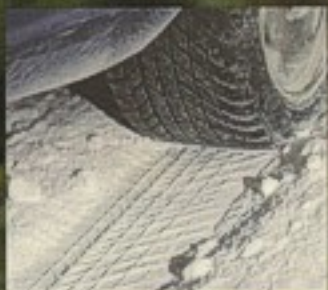
Traction Control is a computer-controlled system which provides optimized acceleration and enhanced vehicle directional stability. In other words, no more useless wheel spinning. When wheel slip is detected, the traction-control system pulses the anti-lock brakes and momentarily reduces engine output via engine spark retardation and throttle control until traction is restored.

Bosch ABS III

This Bosch ABS is one of the most advanced four-wheel anti-lock braking systems available, and it is standard in every 1994 Corvette. ABS reduces the chance of wheel lockup during braking and is designed to help you maintain steering control even in a panic stop in rain, on snow or on ice. Bosch ABS III is combined with four-wheel power discs for up to 1.0g of stopping power.

GOODYEAR EAGLE GS-C TIRES

Asymmetrical, unidirectional Eagle GS-C tires are specifically tailored to the handling characteristics of Corvette. In addition to a tenacious grip on dry surfaces, the Eagle GS-C lets Corvette drivers enjoy improved wet-weather traction, and a quieter highway ride.



YOU'RE IN CONTROL

Traction Control is a computer-controlled system which provides optimized acceleration and vehicle directional stability.





CORVETTE SAFETY.

General Motors is a world leader in automotive safety research, and the design of the 1994 Corvette reflects this tradition of leadership.

Did you know, for example, that GM was the first automaker to produce an air bag for sale? And that one of the industry's most advanced driver- and passenger-side air bag systems is standard in every 1994 Corvette? We're also proud to say that Corvette was the first American car to feature a four-wheel anti-lock brake system as standard equipment. Today's Corvette uses the advanced Bosch ABS III, an enhancement to the Corvette four-wheel disc brake system that improves:

Controllability — the ability to stop the vehicle in a straight line. Steerability — the ability to steer around obstacles while braking.

Other safety features in the 1994 Corvette include high-strength side frame rails and side-guard door beams that help provide excellent structural integrity, and front and rear "crumple zones" that absorb energy in a collision.





STANDARD DUAL AIR BAGS

The driver- and passenger-side air bags supplement the protection of safety belts in certain moderate to severe frontal collisions. Remember to always wear safety belts, even in cars equipped with air bags.

SAFETY FEATURES

OCCUPANT PROTECTION

- Supplemental Inflatable Restraint: manual lap/shoulder safety belts and air bags, driver/passenger
- Energy-absorbing steering column
- Energy-absorbing instrument panel
- Interlocking door latches
- Folding front-seat locks, inertia-type
- Safety armrests
- Breakaway inside rearview mirror
- Security door locks and door-retention components
- Laminated windshield glass, urethane-bonded
- Head restraints (integral)
- Side-guard door beams
- Passenger-guard inside door-lock handles
- Front and rear crush zones.

ACCIDENT AVOIDANCE

- Side-marker lamps and reflectors
- Parking lamps
- Four-way hazard-warning flashers
- Backup lamps
- Directional signal control
- Windshield defrosters, washers and multi-speed wipers
- Inside day/night rearview mirror
- Outside rearview mirrors
- Brake system with dual master cylinder plus warning light
- Center high-mounted stop lamp
- Starter safety switch
- Low-glare finish (inside windshield moldings, wiper arms and blades, metallic steering wheel surfaces)
- Illuminated heater and defroster controls
- Tires with built-in tread-wear indicators
- Audible disc brake lining-wear indicators
- Anti-lock brakes
- Traction Control
- Brake/transmission shift interlock (automatic transmission only).

THEFT DETERRENCE

- Visible vehicle identification number
- Laser-etched VIN plate
- Marked body parts
- Theft-deterrent steering column lock
- PASS-Key II personal security system
- Remote inside hood release.



KEEP ON GOING

New "Extended Mobility" Goodyear Eagle GS-C EMT tires are optional on the LT1 Coupe and Convertible. With this option, you can drive up to 200 miles at 55 mph on completely deflated tires, so chances are you'll never change a tire at the side of the road again.



ZR-1: THE AMERICAN SUPERCAR.



A FOUR-CAM MASTERPIECE.

All rise for the King of the Hill. And doubters, shame on you. The Corvette ZR-1 crashes the party again this year and the raucous sound of its 405 hp, 32-valve V8 should be heard all the way from Detroit to Zuffenhausen.

In four short years, ZR-1 has redefined the word "supercar" by combining race-car performance with an equally impressive level of comfort and civility.

While the flared rear bodywork and extra-wide Eagle ES-C tires signal the cognoscente that this is no "ordinary" Corvette, what really counts is what's packed underneath.

Specifications of the ZR-1's all-aluminum LTS V8 are already legendary: four overhead camshafts, Sequential-Port Fuel Injection with a 16-runner inlet manifold and two injectors per cylinder. The result is totally uncompromised high performance.

Perhaps the most intriguing aspect of the LTS V8 is its ability to combine high-rpm power with a smooth, refined around-town attitude. A dual-mode induction system contains the secret of this tractable nature. Within each cylinder, the intake ports, valves and cam lobes are divided into two

groups, the primary and secondary. Below half-throttle, or 3000 rpm, the engine breathes through the primary ports only. So operation, in effect, is on three valves per cylinder.

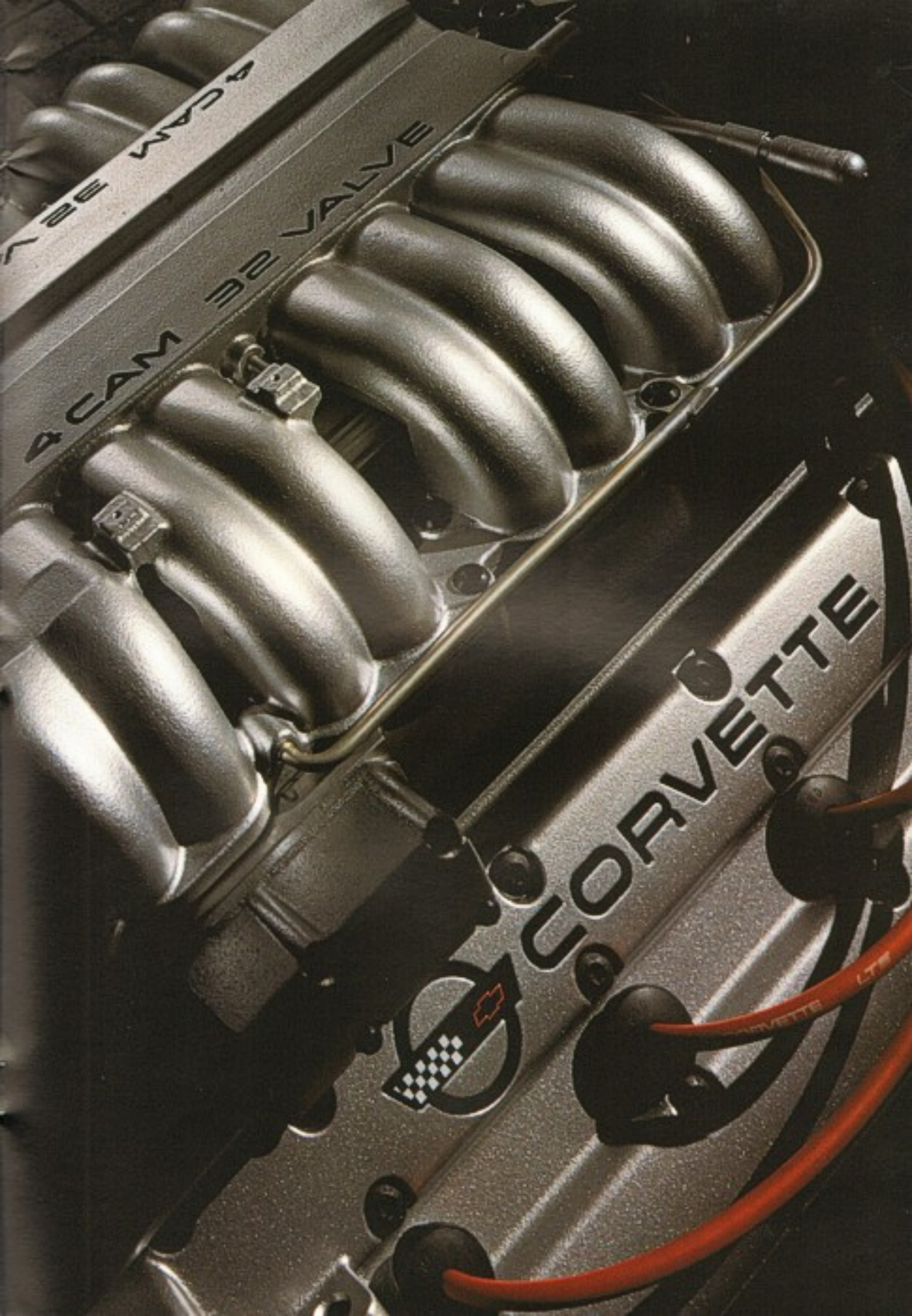
But put your foot down and you unleash the full potential of ZR-1. The "secondaries" open, and the LTS is running on all 16 injectors and all 32 valves. The secondary intake valves are actuated by cam lobes with more duration than the primaries, providing true variable valve timing, for impressive low-speed and high-speed characteristics in a single engine.

A word of caution: only a lucky few will own the 1994 edition of the American Supercar. You may want to get your order in early.



32 VALVES, 405 HP

The all-aluminum LTS V8 features four overhead camshafts and four valves per cylinder for excellent volumetric efficiency through a wide rpm range.



4 CAM 32 VALVE

CORVETTE



CORVETTE LTZ

THE CORVETTE PROMISE.

Chevrolet is committed, in every way, to making your 1994 Corvette the best car you've ever owned. That commitment starts with a quality car, and it continues with a promise to treat you as a valued customer and a friend. Always.

As a Corvette owner, you are covered by the Chevrolet Customer Care Package, a comprehensive owner-protection plan that includes a 3-year/36,000-mile Bumper to Bumper warranty with no deductible, Courtesy Transportation if your car needs warranty service, and a 24-hour Roadside Assistance Program.

THE GM 3-YEAR/36,000-MILE WARRANTY

This comprehensive warranty covers repairs for all 1994 Corvettes, including labor and parts, to correct any defects in material or workmanship occurring during the warranty period. Warranty features include air conditioning repair, towing, no-cost warranty transfer and 5-year/50,000-mile emissions control system coverage. Items not covered include tires (which are covered by their manufacturer) and normal maintenance. See your Chevrolet dealer for terms of this limited warranty.

COURTESY TRANSPORTATION

Customers who purchase or lease a 1994 Corvette will be able to take advantage of Courtesy Transportation at no additional charge when their vehicles are left at a participating dealership for repairs covered under the 3-year/36,000-mile New Vehicle Limited Warranty. See your participating dealer for details.

CORVETTE ROADSIDE ASSISTANCE PROGRAM

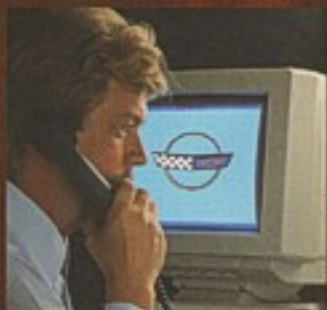
For as long as you own your 1994 Corvette, the security and convenience of round-the-clock roadside assistance is available via a toll-free hot line (1-800-CHEV-USA). Your call will be answered by a Roadside Assistance phone advisor trained by Chevrolet. You will be placed in contact with a nearby service center, and assistance with towing, directions and many other helpful services will be arranged. See your dealer for more details.

CORVETTE ACTION CENTER

The Corvette Action Center has a special, toll-free number (1-800-457-VETT). It puts you in contact with Corvette experts who can handle any product/service question or problem you may have.



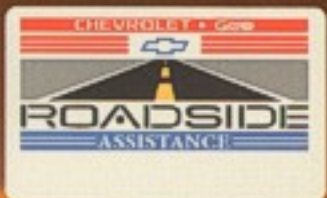
AMERICA'S LARGEST DEALER NETWORK
Corvette owners enjoy the security of the Chevrolet dealer network — the largest dealer network in the United States.



CORVETTE ACTION CENTER
Have a question about your new Corvette? The Action Center is just a phone call away (1-800-457-VETT).



BUMPER TO BUMPER WARRANTY
The 1994 Corvette is covered by GM's excellent 3-year/36,000-mile Bumper to Bumper, no-deductible, limited warranty. See your dealer for details.



ROUND-THE-CLOCK PROTECTION
The security of 24-hour roadside assistance is available to every Corvette owner, should you ever need it, via a toll-free hot line (1-800-CHEV-USA).



TORCH RED



COPPER METALLIC



THE CORVETTE PALETTE.

Your dream Corvette. Should it be the classic white convertible? Or a bright red coupe? Those are popular choices, but maybe you're in the mood for something daring, like Competition Yellow.

New for 1994: Copper Metallic and Admiral Blue Metallic. Refer to the charts at right, but take your time, because choosing the color of your new Corvette can really be fun.

AVAILABLE COLOR COMBINATIONS

Exterior Colors	Interior Colors			
	Black	Light Beige	Light Gray	Torch Red
Torch Red	■	■	■	■
Copper Metallic	■	■	■	—
Competition Yellow	■	■	■	—
Arctic White	■	■	■	■
Bright Aqua Metallic	■	■	■	—
Dark Red Metallic	■	■	■	—
Black Rose Metallic	■	■	■	—
Black	■	■	■	■
Palo Verde II Metallic	■	■	—	—
Admiral Blue Metallic	■	■	■	—

■ Available



DARK RED METALLIC



BLACK ROSE METALLIC



BLACK



Competition Yellow



Arctic White



Bright Aqua Metallic

INTERIOR TRIM AVAILABILITY

	Standard Leather-Trimmed Bucket	Optional Leather-Trimmed Sport Bucket
Black	■	■
Light Beige	■	■
Torch Red	■	■
Light Gray	■	■

■ Available

CONVERTIBLE TOP COLORS

Black, White, and Beige

INTERIOR COLORS



Polo Green II Metallic



Asphalt Blue Metallic



FEATURES AND OPTIONS.

EXTERIOR	COUPE	CONV.	ZR-1
Base-coat/clear-coat paint	\$	\$	\$
Corrosion-proof fiberglass body panels	\$	\$	\$
Dual electric remote-controlled heated sport mirrors	\$	\$	\$
Dual halogen fog lamps	\$	\$	\$
Front cornering lamps	\$	\$	\$
One-piece removable roof panel	\$	—	\$
Removable hardtop	—	0	—
Retractable halogen headlamps	\$	\$	\$
Tinted and flush-mounted glass	\$	\$	\$
Transparent roof panel	0	—	0

INTERIOR	COUPE	CONV.	ZR-1
Air bags, driver-side and passenger-side	\$	\$	\$
Air conditioning	\$	\$	—
Air conditioning (Electronic Control)	0	0	\$
Day/night rearview mirror with integral map light	\$	\$	\$
Electric rear-window defogger	\$	\$	\$
Electronic speed control	\$	\$	\$
Full instrumentation with analog and digital display	\$	\$	\$
Headlamps—bi-xenon	\$	\$	\$
Illuminated dual door mirrors	\$	\$	\$
Intermittent windshield wipers	\$	\$	\$
Leather-wrapped steering wheel	\$	\$	\$
PASS-Key II theft-deterrent system	\$	\$	\$
Power door locks	\$	\$	\$
Power windows with driver's Express-Down feature	\$	\$	\$
Remote Passive Keyless Entry System	\$	\$	\$
Scotchgard™ Carpet Protector (on floor carpeting and floor mats)	\$	\$	\$
Seats, leather seating surfaces	\$	\$	—
Seats, sport, leather seating surfaces	0	0	\$
Seats, power six-way adjustment	0	0	\$
Theft-deterrent horn alarm	\$	\$	\$
Tilt Wheel™ Adjustable Steering Column	\$	\$	\$

POWER TEAM / CHASSIS / MECHANICAL

5.7 Liter (71) V8 engine with Sequential-Port Fuel Injection and aluminum cylinder heads	\$	\$	—
5.7 Liter (71) V8 engine with Sequential-Port Fuel Injection and aluminum cylinder heads	—	—	\$
6-speed manual transmission	0	0	\$
4-speed automatic transmission	\$	\$	—
ZR-1 Performance Handling Package (Includes 17" x 8.5" wheels and P205/40ZR-17 tires)	0	—	—
Acceleration Slip Regulation (Traction Control)	\$	\$	\$

OPTIONAL	COUPE	CONV.	ZR-1
Boch ABS (17) four-wheel anti-lock brake system	\$	\$	\$
Electric in-tank fuel pump	\$	\$	—
Electric in-tank fuel pumps (2)	—	—	\$
Fully independent suspension with transverse front and rear springs	\$	\$	\$
Limited slip differential	\$	\$	\$
Power rack-and-pinion steering	\$	\$	\$
Power steering cooler	\$	\$	\$
Selective Ride Control	0	0	\$
Stainless-steel exhaust system	\$	\$	\$

WHEELS / TIRES

Wheels: 17" x 8.5" aluminum (front), 17" x 8.5" aluminum (rear)	\$	\$	—
Wheels: 17" x 8.5" aluminum (front), 17" x 11" aluminum (rear)	—	—	\$
Tires: Goodyear Eagle GS-C (P205/40ZR-17 front), (P205/40ZR-17 rear)	\$	\$	—
Tires: Goodyear Eagle GS-C (P275/40ZR-17 front), (P215/20ZR-17 rear)	—	—	\$
Tires: Goodyear Eagle GS-C EMT (Extended Mobility) (requires low-tire-pressure warning system)	0	0	—

DELCO ETR™ SOUND SYSTEMS

Delco AM/FM stereo with cassette tape player, power antenna and digital clock	\$	\$	—
Delco (Base) AM/FM stereo with cassette tape player, power antenna and digital clock	0	0	—
Delco (Base) AM/FM stereo with cassette tape player, compact disc player, power antenna and digital clock	0	0	\$

EXTERIOR DIMENSIONS (in.)

Wheelbase	96.2	96.2	96.2
Length (overall)	176.5	176.5	176.5
Width (overall)	72.7	72.7	73.1
Height	46.3	47.3	46.3
Tread width — front	57.7	57.7	57.7
Tread width — rear	59.1	59.1	60.6

INTERIOR DIMENSIONS (in.)

Head room	36.5	37.0	36.5
Leg room	42.8	42.9	42.0
Shoulder room	53.8	53.8	53.8
Hip room	50.8	50.8	50.8

CAPACITIES

Passenger capacity	2	2	2
Cargo capacity (in. lb.)	12.8	6.6	12.8
Fuel tank (gal.)	20.8	20.0	20.0

A Word About Engines

Chevrolet vehicles are equipped with engines produced by different operating units of GM, its subsidiaries or suppliers to GM worldwide.

A Word About Assembly

Chevrolet vehicles are assembled by different operating units of General Motors, its subsidiaries or suppliers to GM worldwide. Chevrolet vehicles incorporate thousands of components produced by different operating units of GM, its subsidiaries or suppliers to GM worldwide. We sometimes find it necessary to produce Chevrolet vehicles with different or differently sourced components than originally scheduled. All such components have been approved for use in Chevrolet vehicles and will provide the quality performance associated with the Chevrolet name. Since some options may be unavailable when your vehicle is assembled, we suggest that you verify that your vehicle includes the equipment you ordered or, if there are changes, that they are acceptable to you.

A Word About Unrated Service Information

Chevrolet regularly sends its dealers useful service bulletins about Chevrolet products. Chevrolet monitors product performance in the field. We then prepare bulletins for servicing our products better. Now you can get these bulletins, too. Ask your dealer. To get ordering information, call toll free 1-800-551-4123.

IMPORTANT: A Word About This Catalog

We have tried to make this catalog as comprehensive and factual as possible. We reserve the right, however, to make changes at any time, without notice, in prices, colors, materials, equipment, specifications, models and availability. Since some information may have been updated since the time of printing, please check with your Chevrolet dealer for complete details.

GM Protection Plan

The available GM Protection Plan offers service protection in addition to that provided by GM's new-vehicle limited warranty. Ask your dealer about it. Coverage available only in the U.S. and Canada.

A Word About Air Bags

Always wear safety belts, even with air bags.



**BUCKLE UP
AMERICA**

Life • USA 538 July 1993

At your Chevrolet dealer, financing or leasing your new Corvette can be as easy as saying GMAC. General Motors, GM, the GM Emblem, Chevrolet, the Chevrolet Emblem, Corvette, the Corvette Emblem and ZR-1 are registered trademarks and Chevy is a trademark of the General Motors Corporation. Scotchgard is a trademark of the 3M Corp. PASS-Key II is a registered trademark of Delco Electronics. GMAC is a registered trademark of the General Motors Acceptance Corporation. ©1993 General Motors Corporation. All rights reserved.

AN AMERICAN CLASSIC,
FROM DAY ONE.



1990

Corvette ZR-1. The most talked-about sports car in a generation.



1953
Corvette's first year. Only 300 built,
all white roadsters.



1984
A radically new Corvette
challenges the world.





Corvette
Sting Ray

1983
Sting Ray! Revolutionary then,
classic today.



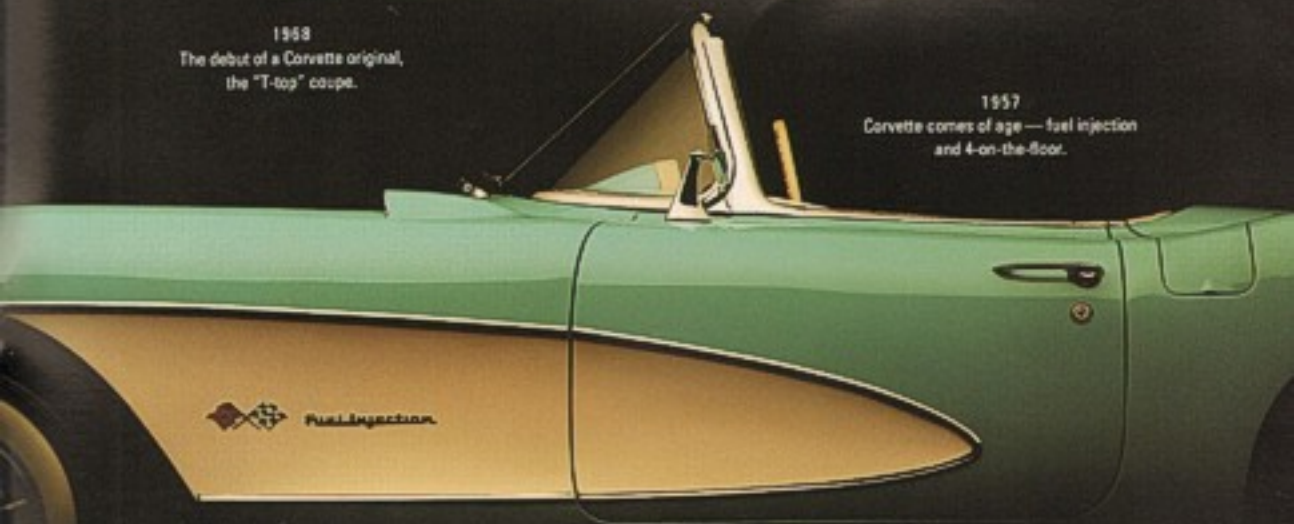
1978
For the first time, Corvette paces Indy,
and America gets "pace car" fever.



1986
The convertible comes back ...
and paces Indy.



1953
The debut of a Corvette original,
the "T-top" coupe.



1957
Corvette comes of age — fuel injection
and 4-on-the-floor.



CORVETTE.

Haven't you waited long enough?



CORVETTE