



The All-New

# 05 MUSTANG



# > FREEDOM TO RUN.

Open road. Open windows. Open throttle. Sometimes the ride has nothing to do with the destination. In Ford Mustang, it's always been full throttle ahead. Now, for 2005, everything about this legend is better than ever. New sheet metal and powertrains improve the tire-smokin' freedom-ridin' experience that Mustang's always delivered, while new chassis architecture and interior styling bring precise refinement. Get ready for a new obsession — as Mustang charges proudly into the future. The legend lives.



Mustang GT, Satin Silver Metallic  
available 17" bright machined aluminum wheels and Red Interior Color Accent Package



## **DYNAMIC DESIGN 05**

Stunning Mustang GT and V6 Renditions • Bold Design Cues

## **PURE POWER 07**

Roarin' 300-hp 4.6L 3-Valve V8 • Robust 210-hp 4.0L SOHC V6 • Mustang-First 5-Speed Automatic

## **SOLID FOUNDATION 09**

All-New Chassis Architecture • Hardy Front and Rear Suspensions • Performance-Minded Panhard Rod

## **INNOVATIVE TECHNOLOGY 11**

Available Anti-Theft System • Available Traction Control • Select-Fit Engine Bearings

## **INTERIOR DETAILS 15**

Interior Color Accent Package • Cloth and Leather-Trimmed Seats • MyColor™ Instrument Panel Lighting

## **SUPERIOR SOUND 19**

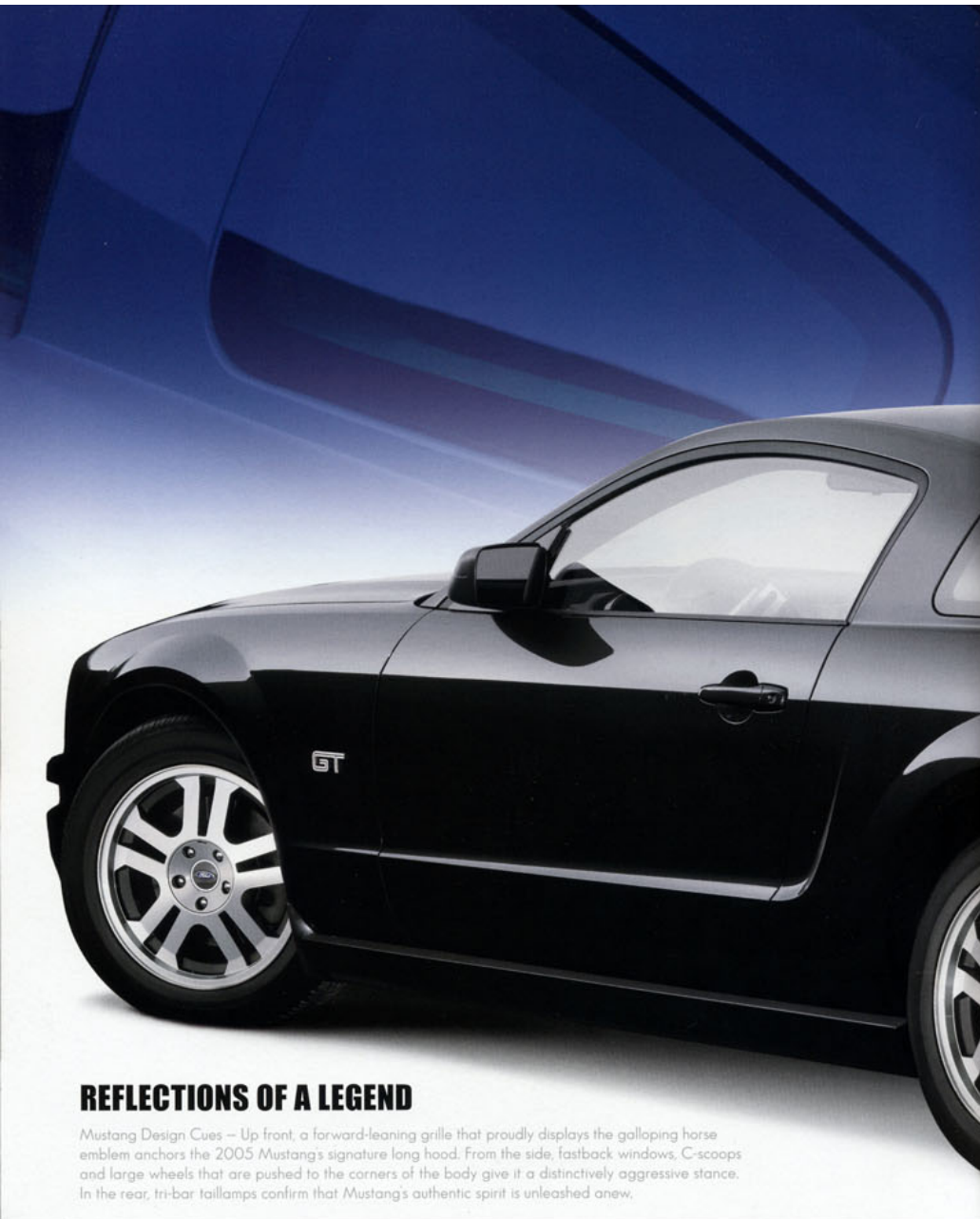
Shaker 500 and 1000 Audio Systems • Tuned Exhaust Note

## **SPECIFICATIONS 23**

# THE NEW 2005 MUSTANG.

THE LEGEND LIVES.





## REFLECTIONS OF A LEGEND

Mustang Design Cues — Up front, a forward-leaning grille that proudly displays the galloping horse emblem anchors the 2005 Mustang's signature long hood. From the side, fastback windows, C-scoops and large wheels that are pushed to the corners of the body give it a distinctively aggressive stance. In the rear, tri-bar taillamps confirm that Mustang's authentic spirit is unleashed anew.

# > EYEMAGNET.

With fan clubs on 5 continents and appearances in over 300 motion pictures, Mustang design has inspired quite a few stares. Those numbers are sure to rise with this 2005 rendition (buy your wax now). "It's a bold, aggressive shape liberally frosted with memorable design cues from golden-era Mustangs," *Motor Trend* says. "It is low and planted to the ground, both all-Mustang cues and fresh to the eye," says *AutoWeek*.

A technical and design knockout, just one look and you're sold.



Above: Chrome spinners on available 16" bright machined-aluminum wheels and available Exterior Sport Appearance Package Mustang V6 — Sonic Blue Metallic  
Below: Mustang GT — Black — available 17" bright machined-aluminum wheels



# 300 HORSEPOWER

4.6L SOHC 3-Valve V8 Engine – The coveted 300-hp threshold that had been reserved for limited-edition Mustang Mach I and SVT Mustang Cobra models is now standard on every Mustang GT – and achieved using 87-octane fuel. An aluminum 4.6L V8 engine, sporting a 3-valves-per-cylinder head arrangement, delivers Mustang GT's thunderous 300 hp and 320 lb.-ft. of torque. With powerful engine management controls, variable camshaft timing and Electronic Throttle Control, responsiveness is maximized at all engine speeds for brawny, pavement-pounding performance.

# > GET UP AND GONE.

From stoplights to twisting blacktop to the standing quarter-mile, you always have the freedom to get up and go – quickly – in Ford Mustang. All-new V6 and muscular V8 powertrains will still encourage pedal meeting metal. Both engines feature Electronic Throttle Control, a Mustang first, for optimal throttle response, while variable camshaft timing on the V8 provides cam settings specifically tailored to the engine's speed and load to improve fuel efficiency and performance. As powerful as they are, these engines are also more than 50% cleaner\* than last year's. And hours in the listening lab have produced a growl that's downright inspiring. \*The fleet average of the Mustang for the '05 model year is certified to produce 56% less ozone-forming pollutants than in '04.



## V8 BRAGGING RIGHTS

3-Valves-Per-Cylinder Technology – The 300 hp and 320 lb.-ft. of torque from Mustang GT's 4.6L V8 engine give you plenty to crow about. With 3 valves (2 intake and 1 exhaust) per cylinder and variable cam timing, this free-breathing design results in higher horsepower, compression, enhanced low-end torque, and improved combustion precision.

## POTENT POWER OFF THE LINE

60-Degree 4.0L SOHC V6 Engine – Standard on Mustang V6, this engine provides a full 210 hp, more than some previous Mustang GT engines. Inherently smoother and more powerful than the 90-degree V6 engine it replaces, the 4.0L V6 provides 240 lb.-ft. of low-end torque for excellent off-the-line performance and acceleration.

## SMOOTH-SHIFTING TRANSMISSIONS

Mustang-First 5-Speed Automatic – For the first time, Mustang can be equipped with an available 5-speed automatic transmission. Closely spaced ratios keep the engine in its power band, balancing excellent acceleration with good fuel economy. A 5-speed manual transmission is standard.



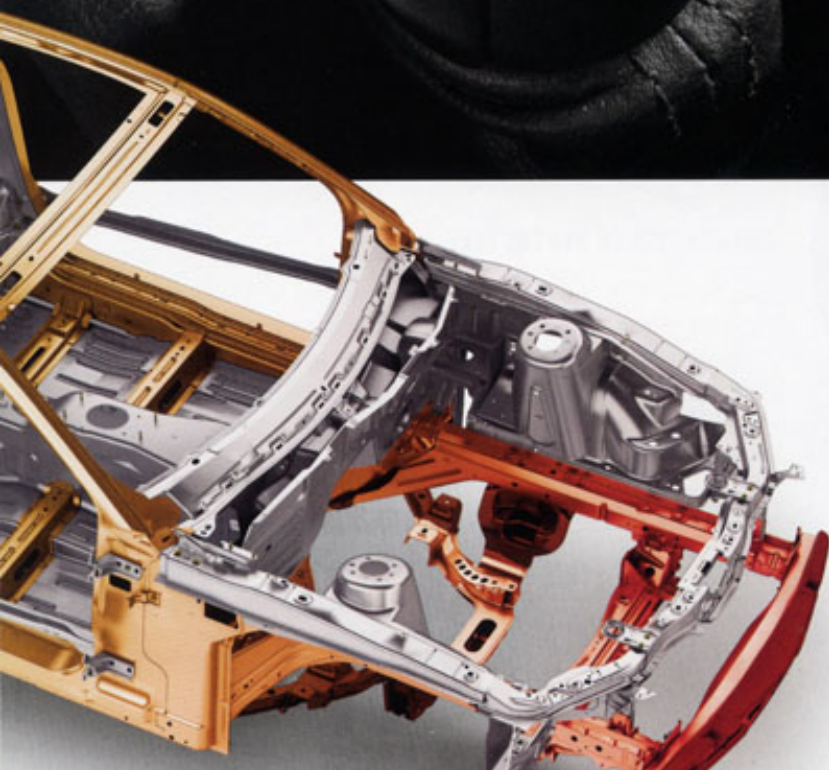
# > GEARED TO PERFORM.

Mustang is designed to run free. Around hundreds of tight corners. Down plenty of glorious straightaways. That's why our engineers spent so much time perfecting the underpinnings that drive this legend. And they'll tell you that the all-new, completely redesigned and engineered performance-car architecture of this 2005 model delivers the best Mustang driving experience ever. With its storied heritage, that's certainly saying a lot. Go see what they mean.



## 5 ON THE FLOOR

Tremec 5-Speed Manual Transmissions – True to its muscle-car heritage, a 5-speed manual gearbox is standard on V6 and GT models. Shift linkage is geared only one way: to provide quick engagement and a solid feel. For an added measure of excitement, a 3.55 axle ratio is teamed with the 5-speed manual on Mustang GT for quicker acceleration and improved performance.



## ALL-NEW HARDWARE

Ultra-Rigid Chassis Structure – From the street to the track, better chassis tuning results in more robust performance. And the stiffer the chassis, the more precisely the spring, damping and bushing rates can be tuned. 30% stiffer than the chassis it replaces, Mustang's all-new, purpose-built, performance-car platform accelerates, turns and stops better than ever before.

## BETTER BALANCED

52/48 Weight Distribution – By crafting the hood from aluminum and extending the wheelbase almost 6", Mustang's weight distribution is better balanced than the previous model. A more even balance improves performance and road-gripping action.



#### READY TO STRUT (a)

MacPherson Strut Front Suspension – Delivering both comfort and control with their light weight, Mustang's MacPherson struts feature concentrically mounted springs in a coil-over-strut configuration to reduce friction and allow more precise shock-valve tuning. Reverse "L" lower control arms are exceptionally strong yet lightweight, while power rack-and-pinion steering provides crisp turn-in, excellent response, and a turning radius that's nearly 3' tighter than the 2004 Mustang.



#### POWER TO THE PAVEMENT (b)

3-Link, Solid-Axle Rear Suspension – Engineers maintained a solid axle in the rear suspension to handle Mustang's brute force and assist in its straight-line dominance. By separating the fore-aft and lateral forces, Mustang's rear suspension is tuned to be soft fore-aft for ride comfort and to be stiff laterally for good handling and steering. A Panhard rod, stabilizer bar (Mustang GT) and 3-link architecture anchor the axle, improving the handling precision and flat-out performance that define this new breed of Mustang.

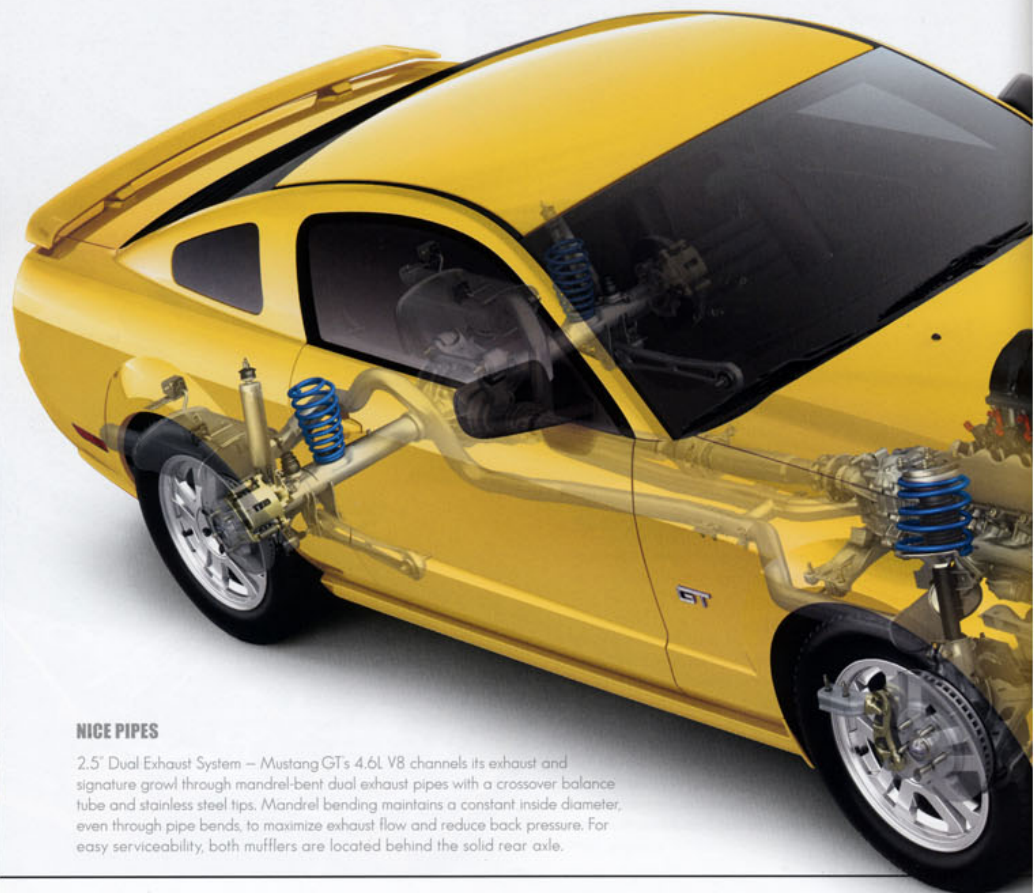


#### SERIOUS GRABBING POWER (c)

Bigger Rotors and Stiffer Calipers – With 300 hp under the Mustang GT hood, it's good to know you've got the goods to bring that power under control. A standard 4-channel Anti-lock Brake System (available on V6 models) enhances the performance of dual-piston aluminum calipers and 12.4" ventilated rotors (11.5" on V6 models) up front, and single-piston calipers with 11.8" ventilated rotors in the rear. In braking performance, bigger is definitely better.

# > HI-TECHHERO.

Starting with an all-new chassis design and 3-valve V8 under GT's hood, advanced technology helps the 2005 Ford Mustang really fly. New assembly-line automation brings Mustang's bold sheet metal and body panels together more precisely than ever before, while new powertrain choices employ the latest technological advancements to deliver on Mustang's performance legend. Inside, the available MyColor™ driver-configurable instrument panel (as described on page 16) lights the way to this next-generation Mustang. Won't you come out and play?



## NICE PIPES

**2.5" Dual Exhaust System** – Mustang GT's 4.6L V8 channels its exhaust and signature growl through mandrel-bent dual exhaust pipes with a crossover balance tube and stainless steel tips. Mandrel bending maintains a constant inside diameter, even through pipe bends, to maximize exhaust flow and reduce back pressure. For easy serviceability, both mufflers are located behind the solid rear axle.

## A RING OF PROTECTION

**Body Stiffness Benefits** – Special care has been given to the design of the occupant compartment to help protect the cabin from deformation and intrusion in certain types of accidents. These enhancements helped achieve a torsional stiffness that is 30% greater than the 2004 Mustang.

## WIND IT OUT WITH CONFIDENCE

**Rear-Suspension Panhard Rod** – Attached to the solid rear axle at one end and to the body at the other, the tubular Panhard rod locates the axle in its proper position and keeps it firmly controlled during hard cornering. The rear-axle shafts on Mustang GT are a heavy-duty, 31-spline design for high torque capacity, delivering power firmly and evenly through the wheels to the pavement.



## HANDS OFF

**Anti-Theft Technology** – Unfortunately, you're not the only one who thinks your Mustang is hot. So protect yourself with its available anti-theft package. When the system is armed, it sounds a remotely located alarm sounder, honks the horn and flashes the exterior lights if any of these sensors are tripped: an anti-tow sensor that detects changes in vehicle inclination to guard against tow-away thefts; an ultrasonic interior-motion sensor that detects motion inside the cabin to help deter "smash-and-grab" break-ins; perimeter sensors that detect the opening of the hood, doors or trunk; and a global open-and-close feature that allows the windows to be opened using the remote keyless entry key fob, or opened and closed by turning the key in the driver's door cylinder.

## A LITTLE ASSIST

**Traction Control** – Mustang GT's standard Traction Control was tuned to respond differently if the vehicle is on dry pavement or a slippery surface. Also available on Mustang V6, the system allows more rear-wheel slip on dry pavement when you're accelerating. However, if the system detects slippery surfaces such as ice, snow or wet roads, it acts more aggressively to help the tires maintain grip. And since it's on a Mustang, the system can be deactivated with the press of a button should you want to really "light 'em up."

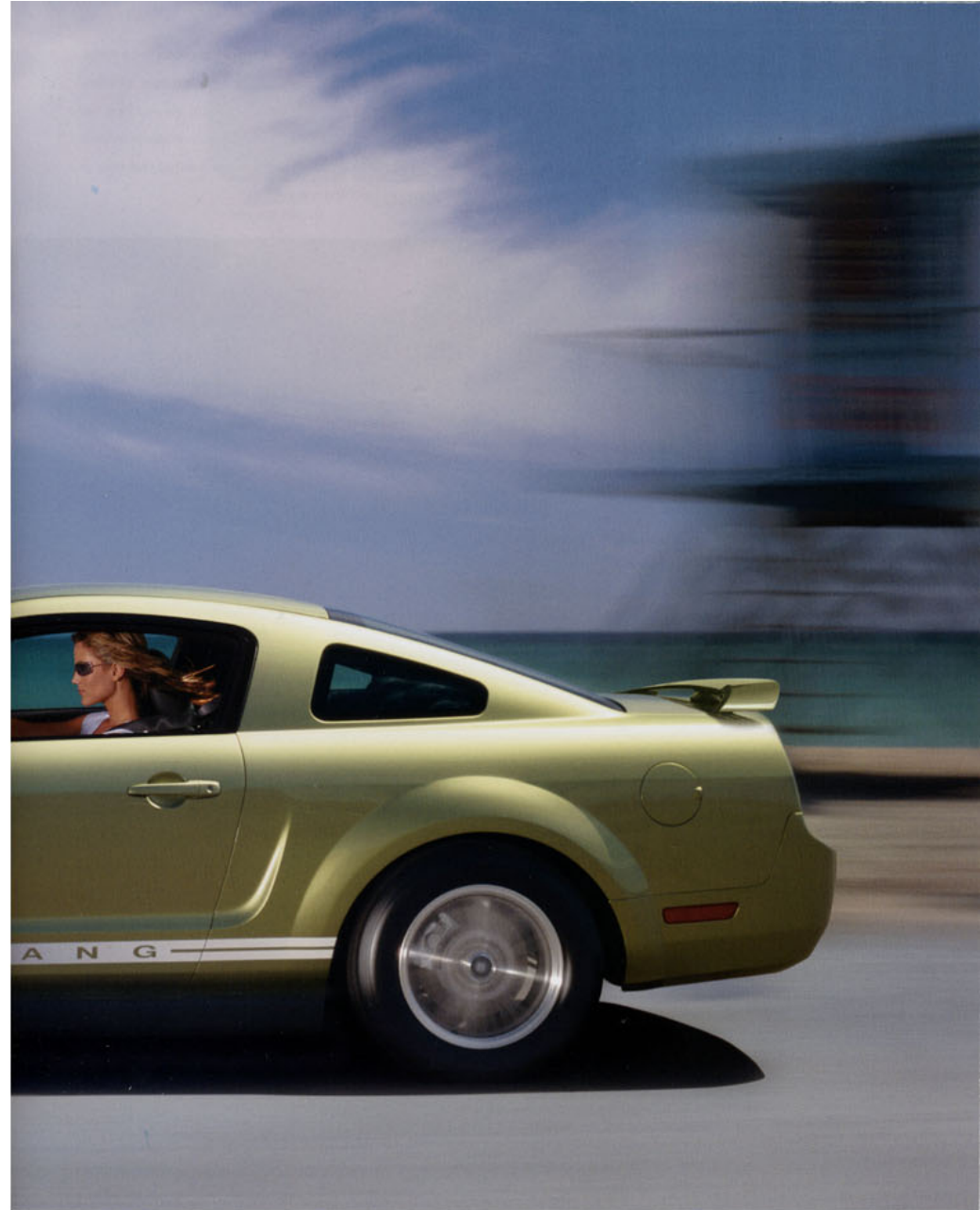
## CRADLING THE ENGINE IN PLACE

**Liquid-Filled Engine Mounts** – Located on both sides of the engine block, liquid-filled engine mounts help absorb vibrations by keeping them off the chassis and out of the cabin.

## A MATTER OF MICRONS

**Select-Fit Main Engine Bearings** – When you're trying to squeeze all the available horsepower from a high-performance engine, microns matter. On Mustang GT's 4.6L V8, the tolerances of the Select-Fit main bearings are so tight that they're measured in microns (a millionth of a meter). While that may seem like a small detail, it pays big rewards in improved durability, power and performance.





# > REDHOT.

Mustang's taut exterior sheet metal isn't the only surface that turns heads. Inside, you'll be treated to a masterpiece of modern design. Quality materials, precise craftsmanship and technical innovations set new standards in muscle-car style. And thanks to efficient use of interior space, all 4 occupants have the room they need to enjoy the ride — especially the lucky one behind the wheel.



## READY TO RIDE

Interior Color Accent Package — Trick out your space even more with Mustang's available Interior Color Accent Package. Building on the Interior Upgrade Package, it splashes the front door-trim panels, floor mats and leather-trimmed sport bucket seats in glorious red.



V6 CLOTH  
Mustang Pattern

V6 LEATHER TRIM

GT CLOTH  
Galloping Horse Pattern

GT LEATHER TRIM



### RED ACCENT COLOR (A)

V6 leather-trimmed interior shown with Interior Color Accent Package.

### LIGHT GRAPHITE (B)

V6 cloth interior shown with Interior Upgrade Package.

### MEDIUM PARCHMENT (C)

V6 cloth interior shown with Interior Upgrade Package.

### DARK CHARCOAL (D)

Mustang GT leather-trimmed interior shown with Interior Upgrade Package.



## WELL BEYOND STOCK

Mustang V6 — Part of Mustang's mass appeal is that it's always been a good value for the times. For 2005, every Mustang V6 Deluxe model features standard driver and front-passenger one-touch-up/down windows; power sideview mirrors; power door locks with remote keyless illuminated entry; rear-window defroster; variable-interval windshield wipers; speed control and an AM/FM stereo with a single-CD player. Mustang V6 Premium adds a standard 6-way power driver's seat with power lumbar and a 500-watt Shaker Audio System featuring 8 speakers and a 6-disc in-dash CD changer with MP3 capability.

# > INITIATE LAUNCH.

Sit here and the countdown begins. Check the chrome-ringed, barrel-like performance gauges. Adjust the flush-mounted audio and climate controls to your desired settings. Take hold of the leather-wrapped shift knob for the standard manual transmission or the T-handle for the available 5-speed automatic. And make sure you establish the proper mood with the industry's first available driver-configurable MyColor™ instrument-panel lighting that lets you choose from 125 colors. Thoroughly modern and unmistakably Mustang, it's always all systems go in here.



## 125 COLORS

MyColor™ – The brightest feature of Mustang's available Interior Upgrade Package is the exclusive MyColor™ instrument-panel lighting. Choose from over a hundred color combinations to find a glow that's just right for you.



## LEGENDARY LINES

Mustang Cockpit – Start with the 3-spoke steering wheel and its galloping horse, front and center. Under the arched-eyebrow instrument panel, the speedometer and tachometer feature radial numeric markers in classic Mustang style. Chrome-ringed air vents, precisely in line with the gauges, flow horizontally across the instrument panel. Clearly, this cockpit is geared for the ride.

## PUT A SHINE TO IT

Interior Upgrade Package – Features satin-aluminum-finish instrument-panel appliqué, door handles, air vents and door scuff plates with bright Mustang lettering inserts, a leather-wrapped steering wheel with satin-aluminum spokes, leather-wrapped shift knob for manual transmission or satin-aluminum-finish handle for available automatic transmission, 6-gauge instrument cluster with MyColor™ lighting and message center.



Mustang V6 Premium, Dark Charcoal Interior  
available leather trim, 5-speed automatic transmission and Interior Upgrade Package



## POWER UP

Single-CD Player with 4 Speakers – Standard on Deluxe models, this AM/FM stereo with single-CD player features 160 watts of power and 4 speakers. And Mustang's new electrical hardware allows the radio to continue playing for several minutes after the Ignition key is removed.

## POWERFUL PERFORMANCE

Shaker 500 Audio System – With the ability to play standard and MP3-burned CDs on its 6-disc in-dash CD changer, you could listen to 1200 songs in a row or about 40 hours of continuous music. Who knows where you'd end up? Two door-mounted subwoofers are part of the system's 8 speakers, which blast out up to 500 watts of peak power. Standard on Premium and available on Deluxe models.

## SOUNDS THE ALARMS

Shaker 1000 Audio System with 4 Subwoofers – 1000 watts of peak power. A 6-disc in-dash CD changer that can play standard and MP3-burned CDs. And 10 premium Audiophile speakers, including 4 subwoofers (2 door-mounted and dual 500-watt subwoofers in the trunk) for thumpin' bass response. Let everyone know you're coming with the ultimate sound system for the ultimate ride. Shown at left, it's available on Mustang V6 Premium and Mustang GT models.



## WAKE 'EM UP

Dual Trunk-Mounted Subwoofers – Thanks to computer-aided design, engineers were able to devise a space-saving subwoofer enclosure on the right side of the trunk that provides maximum audio performance, yet remains out of the way of the key storage area.

# > STIR IT UP.

Mustang's solid chassis architecture offers benefits beyond improved ride and handling. Its tight structure helped engineers ensure that the sounds in the cabin are the ones you want to hear – like Mustang's signature rumble, or its incredibly powerful Shaker Audio Systems (described at left). An improved network electrical system even allows the audio system to increase the volume as vehicle speed increases and decrease it as the vehicle slows. Its performance will stir you up.



## TAKE NOTE

**Mustang Exhaust Rumble** – Before a single V8 was built, engineers created the sound of Mustang GT's engine on computers and in the Ford listening lab with vehicle prototypes, perfecting the sweet V8 sound that rumbles forth from Mustang GT's dual exhaust pipes. It's tuned to reach the ears of the driver in just the right doses, at just the right time, such as when accelerating. At cruising speed, the sound fades away to allow the audio system to fill the cabin.



# THE LEGEND LIVES.

THE ALL-NEW 2005 MUSTANG.

## MUSTANG POWER

- Mustang GT's 4.6L 3-valve V8 engine delivers a thunderous 300 hp and 320 lb.-ft. of torque
- The standard 4.0L V6 provides 210 hp and 240 lb.-ft. of low-end torque

## MUSTANG DESIGN

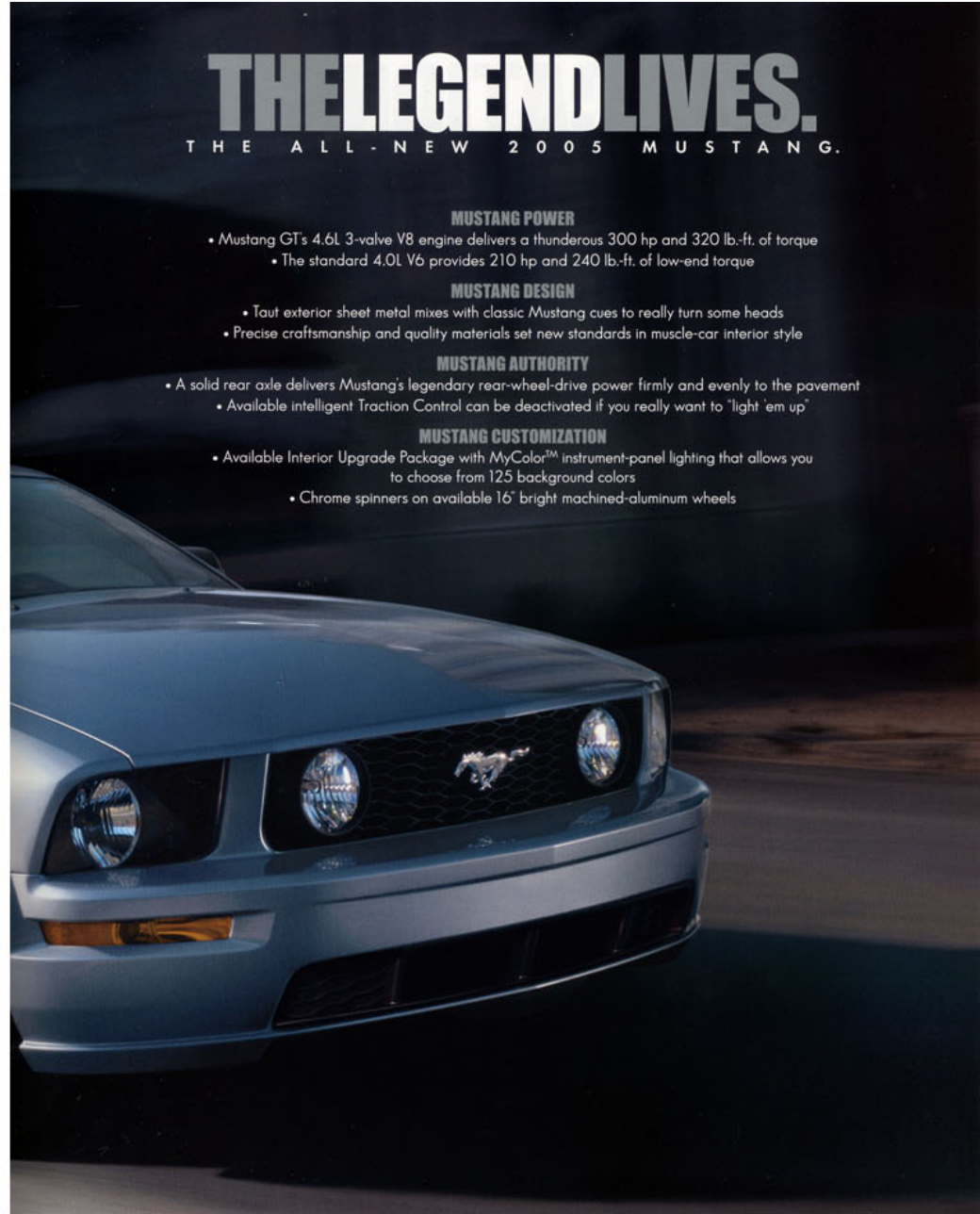
- Taut exterior sheet metal mixes with classic Mustang cues to really turn some heads
- Precise craftsmanship and quality materials set new standards in muscle-car interior style

## MUSTANG AUTHORITY

- A solid rear axle delivers Mustang's legendary rear-wheel-drive power firmly and evenly to the pavement
- Available intelligent Traction Control can be deactivated if you really want to "light 'em up"

## MUSTANG CUSTOMIZATION

- Available Interior Upgrade Package with MyColor™ instrument-panel lighting that allows you to choose from 125 background colors
- Chrome spinners on available 16" bright machined-aluminum wheels



# > SPECIFICATIONS

**MODEL HIGHLIGHTS** Each Premium model includes the standard equipment of the Deluxe model.



## MUSTANG V6

### DELUXE

4.0L SOHC V6 Engine  
5-Speed Manual Transmission  
Stainless Steel Single Exhaust  
Power 4-Wheel Disc Brakes  
Front Stabilizer Bar  
4-Way Manual Height-Adjustable Driver's Seat  
50/50 Split-Folding Rear Seat  
Tilt Steering Wheel  
Speed Control  
Power Windows and Door Locks  
Remote Keyless Illuminated Entry  
Air Conditioning  
AM/FM Single-CD Audio System  
16" Painted Aluminum Wheels  
P215/65R16 All-Season Tires

### PREMIUM

Shaker 500 Audio System with 6-Disc In-Dash CD Changer, 8 Speakers and MP3 Capability  
6-Way Power Driver's Seat with Power Lumbar  
16" Bright Machined-Aluminum Wheels with Chrome Spinners

## MUSTANG GT

### DELUXE

4.6L 3-Valve V8 Engine  
5-Speed Manual GT Transmission  
Stainless Steel Dual Exhaust  
Power 4-Wheel Disc Anti-Lock Brakes  
Front and Rear Stabilizer Bars  
Traction Control  
Fog Lamps  
Rear Spoiler  
6-Way Power Driver's Seat with Power Lumbar  
50/50 Split-Folding Rear Seat  
Leather-Wrapped Tilt Steering Wheel  
Speed Control  
Power Windows and Door Locks  
Remote Keyless Illuminated Entry  
Air Conditioning  
AM/FM Single-CD Audio System  
17" Painted Aluminum Wheels  
P235/55ZR17 Performance Tires

### PREMIUM

Shaker 500 Audio System with 6-Disc In-Dash CD Changer, 8 Speakers and MP3 Capability  
Leather-Trimmed Sport Bucket Seats

## STANDARD INTERIOR



## INTERIOR UPGRADE PACKAGE



## WHEELS



16" Painted Aluminum Wheel  
Standard on V6 Deluxe



16" Bright Machined-Aluminum Wheel with Chrome Spinner  
Standard on V6 Premium;  
Available on V6 Deluxe



17" Painted Aluminum Wheel  
Standard on GT Deluxe and Premium



17" Bright Machined-Aluminum Wheel  
Available on GT Deluxe and Premium

## STANDARD FEATURES

### Mechanical

100,000-mile tune-up interval*
Compact spare tire
Power 4-wheel disc brakes
Power rack-and-pinion steering
Rear-wheel drive
Stabilizer bar – Front on V6, front and rear on GT
Suspension – Front: coil-over-strut with reverse "L" lower control arms; rear: coil spring 3-link solid axle with Panhard rod and outboard-mounted shocks

### Safety/Security

Personal Safety System™ for driver and front passenger – With dual-stage airbags,** safety belt pretensioners, driver's-seat position sensor, crash severity sensor, energy-management retractors, safety belt usage sensors and front-passenger-seat occupant classification sensor
Belt-Minder® safety belt reminder
Illuminated entry
LATCH – Lower anchors and tether anchors for child-safety seats
Remote keyless illuminated entry system
Safety belts – 3-point for all seating positions
Side-impact door beams

### Seating

4-way manual height-adjustable driver's seat
Front cloth bucket seats
Rear 50/50 split-folding seat

### Interior

Air conditioning
Carpeted front floor mats
Chrome accent 4-gauge instrument cluster and air registers
Cupholders – 2
Driver's footrest
Front-door map pockets
Full center console with armrest and storage
Power door locks
Power points – 2
Power windows with one-touch-up/-down feature
Speed control
Tilt steering wheel

### Exterior

Dual power sideview mirrors
Rear-window defroster
Variable-interval windshield wipers

\*Under normal driving conditions with routine fluid and filter changes.  
\*\*Always wear your safety belt and secure children in the rear seat.

## ENGINES

	4.0L SOHC V6	4.6L 3-Valve V8
Horsepower (hp @ rpm)	210 @ 5300	300 @ 5750
Torque (lb.-ft. @ rpm)	240 @ 3500	320 @ 4500

## EPA-ESTIMATED FUEL ECONOMY

	4.0L SOHC V6	4.6L 3-Valve V8
Manual transmission	19 city/28 hwy.	17 city/25 hwy.
Automatic transmission	19 city/25 hwy.	18 city/23 hwy.

## MODEL-SPECIFIC FEATURES & OPTIONS

	V6 Deluxe	V6 Premium	GT Deluxe	GT Premium
				<b>Mechanical</b>
● ● — —	● ● — —	● ● — —	● ● — —	4.0L SOHC V6 engine
— — ● ●	— — ● ●	— — ● ●	— — ● ●	4.6L 3-valve V8 engine
● ● — —	● ● — —	● ● — —	● ● — —	5-speed manual transmission (3.31 axle ratio)
— — ● ●	— — ● ●	— — ● ●	— — ● ●	5-speed manual GT transmission (3.55 axle ratio)
○ ○ ○ ○	○ ○ ○ ○	○ ○ ○ ○	○ ○ ○ ○	5-speed automatic transmission (3.31 axle ratio)
● — — —	● — — —	● — — —	● — — —	16" painted aluminum wheels
○ ● — —	○ ● — —	○ ● — —	○ ● — —	16" bright machined-aluminum wheels with chrome spinners
— — ● ●	— — ● ●	— — ● ●	— — ● ●	17" painted aluminum wheels
— — ○ ○	— — ○ ○	— — ○ ○	— — ○ ○	17" bright machined-aluminum wheels
● ● — —	● ● — —	● ● — —	● ● — —	P215/65R16 all-season tires
— — ● ●	— — ● ●	— — ● ●	— — ● ●	P235/55ZR17 all-season performance tires
○ ○ ● ●	○ ○ ● ●	○ ○ ● ●	○ ○ ● ●	Anti-lock Brake System (ABS) and Traction Control
● ● — —	● ● — —	● ● — —	● ● — —	Stainless steel single exhaust
— — ● ●	— — ● ●	— — ● ●	— — ● ●	Stainless steel dual exhaust
				<b>Safety/Security</b>
○ ○ ○ ○	○ ○ ○ ○	○ ○ ○ ○	○ ○ ○ ○	Active Anti-Theft System
○ ○ ○ ○	○ ○ ○ ○	○ ○ ○ ○	○ ○ ○ ○	Front-seat-mounted side-impact airbags
○ ○ ○ ○	○ ○ ○ ○	○ ○ ○ ○	○ ○ ○ ○	Wheel-lock kit
				<b>Seating</b>
○ ● ● ●	○ ● ● ●	○ ● ● ●	○ ● ● ●	6-way power driver's seat with power lumbar
— ○ — —	— ○ — —	— ○ — —	— ○ — —	Leather-trimmed bucket seats
○ ○ ○ ●	○ ○ ○ ●	○ ○ ○ ●	○ ○ ○ ●	Leather-trimmed sport bucket seats (V6 requires Red Interior Color Accent Package)
				<b>Interior</b>
● — ● —	● — ● —	● — ● —	● — ● —	AM/FM audio system with single-CD player and 4 speakers (160-watt)
○ ● ○ ●	○ ● ○ ●	○ ● ○ ●	○ ● ○ ●	Shaker 500 Audio System with AM/FM stereo, 6-disc in-dash CD changer, 8 speakers and MP3 capability (500-watt)
— ○ ○ ○	— ○ ○ ○	— ○ ○ ○	— ○ ○ ○	Shaker 1000 Audio System with AM/FM stereo, 6-disc in-dash CD changer, 10 Audiophile speakers and MP3 capability (1000-watt)
				<b>Exterior</b>
— — ● ●	— — ● ●	— — ● ●	— — ● ●	Fog lamps
— — ● ●	— — ● ●	— — ● ●	— — ● ●	Rear spoiler
— — ○ ○	— — ○ ○	— — ○ ○	— — ○ ○	Spoiler delete option
				<b>Packages</b>
○ ○ — —	○ ○ — —	○ ○ — —	○ ○ — —	Exterior Sport Appearance Package – Includes rear spoiler and lower-bodyside Mustang logo tape stripe
○ ○ ○ ○	○ ○ ○ ○	○ ○ ○ ○	○ ○ ○ ○	Interior Upgrade Package – Includes 6-gauge instrument cluster with MyColor™ illumination; leather-wrapped steering wheel and shift knob; satin-aluminum-finish air vents; satin-aluminum spokes on steering wheel; satin-aluminum-finish instrument panel, door latches and door scuff plates; message center and Dark Charcoal door-panel inserts
○ ○ ○ ○	○ ○ ○ ○	○ ○ ○ ○	○ ○ ○ ○	Red Interior Color Accent Package – Red leather-trimmed sport bucket seats, red door-panel inserts and red floor mats (requires Interior Upgrade Package and Dark Charcoal interior trim)

● Standard ○ Optional — Not Available



## INTERIOR COLORS

### V6 TRIM



Medium Parchment Mustang Cloth  
Standard on V6



Light Graphite Mustang Cloth  
Standard on V6



Dark Charcoal Mustang Cloth  
Standard on V6



Medium Parchment Leather  
Optional on V6



Light Graphite Leather  
Optional on V6



Dark Charcoal Leather  
Optional on V6

### GT TRIM



Medium Parchment Galloping Horse Cloth  
Standard on GT



Light Graphite Galloping Horse Cloth  
Standard on GT



Dark Charcoal Galloping Horse Cloth  
Standard on GT



Medium Parchment Leather  
Optional on GT



Light Graphite Leather  
Optional on GT



Dark Charcoal Leather  
Optional on GT

Paint	Interior Color			
	Medium Parchment	Light Graphite	Dark Charcoal	Dark Charcoal w/Red Leather*
Performance White	●	●	●	●
Torch Red	●	●	●	●
Redfire Metallic	●	●	●	●
Screaming Yellow			●	
Legend Lime Metallic	●		●	
Windveil Blue Metallic	●	●	●	
Sonic Blue Metallic	●	●	●	
Satin Silver Metallic	●	●	●	●
Mineral Grey Metallic	●		●	●
Black	●	●	●	●

Available V6 Exterior Sport Appearance Package Tape Stripe Color				
Performance White	Pearl Gold	Black	Black	Black
Torch Red	Pearl Gold	Black	Black	Black
Redfire Metallic	Pearl Gold	Black	Black	Black
Screaming Yellow			Black	
Legend Lime Metallic	Black or White		Black or White	
Windveil Blue Metallic	Pearl Gold	Black or White	Black or White	
Sonic Blue Metallic	Pearl Gold	White	White	
Satin Silver Metallic	Black	Black	Black	Black
Mineral Grey Metallic	Pearl Gold		Black	Black
Black	Pearl Gold	White	White	White

\*Interior Color Accent Package.



Red Leather  
Interior Color Accent Package  
Optional on V6 and GT

## GENUINE FORD ACCESSORIES

See your dealer for these and other great dealer-installed accessories or visit us at [fordaccessoriesstore.com](http://fordaccessoriesstore.com).



### Hands On The Wheel

Mobile-Ease Hands-Free Communication System – Place and receive hands-free calls through the audio system with this Bluetooth® technology and your Bluetooth-equipped cell phone.



### Quick, Convenient Access

Keyless Entry Keypad – No more standing out in the rain or other nasty weather trying to find your keys. Just walk up, enter the code, and you'll be inside in a flash. At night, backlighting makes it easy to see.



### A Speeding Bullitt

17" Polished GT-Style Wheel – With its aggressive look and chrome spinner-style center cap, this new wheel accentuates Mustang's street credentials. It's also available in argent, black, beige and silver.



### Show Your Stripes

Racing Stripe Decals – New for 2005, these accent stripes cover Mustang's long hood, roof and rear decklid. Available in black or silver. Dealer installation recommended.

## EXTERIOR COLORS



Performance White



Torch Red



Redfire Metallic



Screaming Yellow



Legend Lime Metallic



Windveil Blue Metallic



Sonic Blue Metallic



Satin Silver Metallic



Mineral Grey Metallic

Ford uses clearcoat paint for beauty and protection. Colors shown are representative only. See your dealer for actual paint/trim options.



Black



Get the ride you want. Whether you plan to lease or finance, you'll find the choices that are right for you at Ford Credit. Ask your Ford Dealer for details or check us out at [fordcredit.com](http://fordcredit.com).



For a purchase or lease, the Ford **Extended Service Plan (ESP)** gives you "Peace-of-Mind" protection designed to cover key vehicle components and protect you from the cost of unexpected repairs. Ask your dealer for an ESP backed by Ford Motor Company and honored at all Ford dealerships.



Choose the insurance program that's designed for your vehicle – Ford Motor Company Insurance Services. Our program helps you receive the rates and service you deserve. Call 1-877-367-3847 or visit us at [fordvip.com](http://fordvip.com) for a no-obligation quote. Insurance offered by American Road Services Company (in CA, American Road Insurance Agency), a licensed agency and subsidiary of Ford Motor Company.

**NATIONAL** Indy Pace Car Registry of Mustangs • International Mustang Bullitt Owners Club • Mustang Club of America • Saleen Owners & Enthusiasts Club • Shelby American Automobile Club • SVT Club of America • SVT Owners Association • SVT Colors Owners Association **ALABAMA** Birmingham Mustang Club **ARKANSAS** Central Arkansas Mustangers • Northwest Arkansas Mustang Club **ARIZONA** Copperstate Mustang Club • Southern Arizona Mustang Club **CALIFORNIA** All Mustang & Ford Club of Southern California • Los Angeles SAAC • Mustang Owners Club of California • Northern California Region SAAC • Saleen Mustang Owners Group • Beach Cities Mustang Club • South Bay Mustang Owners **COLORADO** Rocky Mountain Mustangers • The Early Mustang Club of Colorado **CONNECTICUT** SAAC of New England **FLORIDA** Emerald Coast Mustang Club • Fort Lauderdale Mustang Club • Gold Coast Mustang Club • Gulf Coast Regional Mustang Club • Jacksonville Mustang Club • Mid-Florida Mustang Club • Mustang Club of West Central Florida • Space Coast Mustang Club • Suncoast Mustang Club **GEORGIA** Georgia Regional Mustang Club • Northeast Georgia Mustang Club • Savannah Mustang Club **IOWA** Eastern Iowa Mustangs • Mustang Club of Central Iowa **IDAHO** Inland Empire Mustang Club **ILLINOIS** Central Illinois Mustangers • Northern Illinois Shelby Club • Northern Mustang Corral **INDIANA** Falls City Mustang Club • Indiana SAAC • Michiana Mustangs • Mustang Club of Indianapolis **KANSAS** South Central Kansas Mustang Club

## JOIN THE CLUB.

• Vintage Mustang Club of Kansas City **KENTUCKY** Derby City Mustang Club **LOUISIANA** Baton Rouge Mustangers **MASSACHUSETTS** Mustang Car Club of New England **MARYLAND** Mid-Maryland Ford Club Inc. • National Capital Region Mustang Club • SAAC Group of Maryland **MICHIGAN** Mustang Club of Mid-Michigan • Mustang Owners Club of Southeastern Michigan • SAAC Motor City Region • West Michigan Mustang Club **MINNESOTA** Upper Midwest Region SAAC **MISSOURI** Central Missouri Mustang Club • Greater Ozarks Mustang Club • Mid-America Mustangers • Show-Me Mustang Club **MISSISSIPPI** Mississippi Coast Mustang Club **NORTH CAROLINA** Carolina Regional Mustang Club **NEBRASKA** Capital City Ford Club • Mustang Car Club of Omaha **NEW HAMPSHIRE** New Hampshire Mustang Club **NEW JERSEY** Garden State Regional Mustang Club • New Jersey Shelby Club **NEW MEXICO** Rio Grande Mustang Club Inc. **NEVADA** Mustang Club of Las Vegas **NEW YORK** Classic Mustang Group • Long Island • Greater Rochester Mustangs **OHIO** Mahoning Valley Mustangs • Mustang Club of Ohio • Ohio Region SAAC Inc. • Tri-State Mustang Club **OKLAHOMA** Green Country Mustang Club • Mid-America Shelby Club • Oklahoma Mustang Club **OREGON** Mustang Wranglers of Oregon • SAAC Northwest Region **PENNSYLVANIA** First Pennsylvania Mustang Club • Greater Pittsburgh Mustang Club • Lehigh Valley Region SAAC • North Central Mustang Club • Valley Forge Mustang Club **SOUTH CAROLINA** Low Country Mustang Club **SOUTH DAKOTA** Rapid Mustang Club of the Black Hills **TENNESSEE** Music City Mustang Club • Mustangs of Memphis • Tennessee Valley Mustang Club **TEXAS** Mustang Club of Houston • Mustang Owners Club of Austin • North Texas Mustang Club • SVT Cobra Club of North Texas **UTAH** Northern Utah Mustang Owners **VIRGINIA** Central Virginia Mustang Club • Styling Stangs of Hampton Road • Victory 7 Mustang Club **WASHINGTON** Mustangs Northwest • Mustangs West • Pierce County Mustang Club **WISCONSIN** Badgerland Mustang Club • Northwoods Region SAAC • Wisconsin Early Mustangers **WYOMING** Hoofbeats Mustang Club

(and that's just to name a few)