



By appointment  
to HM The Queen  
motor car manufacturers  
Bentley Motors Limited  
Crewe Cheshire



By appointment  
to HRH The Prince of Wales  
motor car manufacturers  
Bentley Motors Limited  
Crewe Cheshire



**BENTLEY**

THE NEW MULSANNE RANGE



12 WO

THE NEW MULSANNE RANGE







INTRODUCTION <sup>6</sup>/ DESIGN <sup>20</sup>/ PERFORMANCE <sup>32</sup>/  
INTERIOR <sup>42</sup>/ TECHNOLOGY <sup>58</sup>/ PERSONALISING  
YOUR CAR <sup>66</sup>/ MULLINER <sup>90</sup>/ DESIGNER'S CHOICE <sup>96</sup>/  
WORLD OF BENTLEY <sup>112</sup>/ OVER TO YOU <sup>118</sup>/  
SPECIFICATIONS AND OPTIONS <sup>120</sup>

**Photography – Colour specification of cars illustrated:**

**Mulsanne:**

Fountain Blue  
Autumn leather interior  
Liquid Amber veneer

**Mulsanne Speed:**

Julep  
Beluga leather interior  
Piano Black veneer

**Mulsanne Extended Wheelbase:**

Magnetic and Rose Gold  
Twine and Porpoise leather interior  
Dark Stained Vavona veneer



INTRODUCTION





## A vision realised.

Created for visionaries with the power to turn their ideas into reality, the Mulsanne represents a unique pairing of power and luxury.

The signature model, the Mulsanne, is the quintessential expression of Bentley craftsmanship. The Mulsanne Speed adds focus for those who enjoy driving their car more progressively and want to appreciate the full potential of the Mulsanne's power. And for those who wish to be driven in unrivalled luxury and style, the Mulsanne Extended Wheelbase offers a rear seat experience unlike any other.

With a completely redesigned front and rear for greater road presence, new technology throughout the cabin and new headlamps, tail lamps and wing vents, there has never been a better time to acquaint oneself with the world's finest handmade car.

The Mulsanne represents a peerless combination of extraordinary luxury and effortless power; an exquisitely crafted environment in which drive time becomes time to think. So it is no surprise that the Mulsanne appeals to free thinkers. Those for whom tomorrow arrives sooner than it does for the rest.











## Elegance without equal.

A pure expression of both luxury and performance, the new Mulsanne represents the pinnacle of Bentley's design, craft and engineering skills.

A new, wide front grille sees the addition of vertical stainless steel vanes. Together with redesigned headlamps and bumpers, it lends the car a muscular, imposing appearance.

New tail lamps reflecting the Bentley 'B' design match the stainless steel Bentley 'B' wing vents, while inside, a new fluted seat design completes a uniquely luxurious cabin.

But the new Mulsanne is about much more than beauty. It delivers an unrivalled drive, whether you sit in the rear or behind the wheel.

Inside and out, you will find the finest craftsmanship in evidence, using authentic materials, thoughtful design and discreet technology to achieve the highest levels of luxury and style. This is the essence of the new Bentley Mulsanne: absolute luxury coupled with absolute power.





## Exhilaration with elegance.

The new Mulsanne Speed offers a sporting take on luxury, coupled with even more dynamism and power. Its rifled stainless steel tailpipes, unique 21" wheels, dark tint brightware and 'Speed' wing vents all add to its powerful road presence.

The new, wide front grille houses dark tint matrix brightware, a theme carried through to the Bentley 'B' wing vents and even the new dark tint headlamps.

Inside the car, polished stainless steel treadplates greet you, engraved with the word 'Speed'. Drilled alloy sports foot

pedals and a knurled sports gear lever bring Bentley's racing heritage to mind, as you sit in its newly designed diamond quilted seats.

Ultimately, the Speed is all about performance. A re-engineered 6¾ litre twin-turbocharged V8 engine propels it to 60 mph in just 4.8 seconds (100 km/h in 4.9 seconds) and on to a phenomenal top speed of 190 mph (305 km/h), the gear changes almost imperceptible, thanks to its 8-speed automatic transmission.





## More luxury. More space.

For those individuals with both the vision and the drive to bring their ideas to life, the Bentley Mulsanne has long represented the ultimate luxury car. Its unique combination of power and exquisite craftsmanship make it the perfect car for those who like to act fast.

There are those for whom the act of driving itself can be a distraction. Some need more space to think, work and relax. That is why Bentley's designers and engineers created a new pinnacle in Bentley luxury: the Mulsanne Extended Wheelbase.

Offering an extra 250 mm (9.8") of legroom for rear passengers, the Mulsanne Extended Wheelbase is an incredible car in

which to travel. Light floods into the rear cabin, courtesy of an expansive glass sunroof.

Airline-style reclining seats can be commissioned,\* giving occupants in the back the chance to relax as they might on a private jet. Controls for the digital entertainment system are accessible from the rear seat, providing access to fast wireless connectivity, high-resolution video screens and the option of the world's finest in-car audio system.

The Mulsanne Extended Wheelbase is the ultimate combination of space, speed and exquisite automotive luxury.



DESIGN







## A vision takes shape.

The sweeping lines drawn by Bentley designers are difficult to realise in steel and aluminium. Difficult, but not impossible.

It takes around 125 hours to create one bodyshell for the new Mulsanne. First, sheets of aluminium are heated to 500°C, then air pressure is applied to mould them, in a process called superforming. Originating in the aerospace industry, it's the innovation behind the car's seamless curves.

Once formed, the panels are primed, painted, sanded, lacquered and polished to a mirror finish by hand. From the front, the car looks low and tightly connected to the road, its bumpers emerging seamlessly from its bodyshell. The sharp lines formed by the fenders, bonnet and boot can be complemented with new wheel designs, to give the car's exterior an even more contemporary appearance.

It's an effect repeated at the rear, where the corners of the bumper have been extended by 26 mm (1.02") on each side, with a light-catching lower valance making the car appear closer to the road. A small detail – but it's one created in the pursuit of perfection. Exactly what one would expect of the world's finest handmade car.







## Precious metal.

Brightware. It's the name Bentley gives to the precision-cut chrome features that adorn the cars they create.

Small as these details may appear, they have a significant impact on the way the Mulsanne is seen. New vertical vanes have been added to the front grille, itself now widened by 80 mm (3.15"). Angled to fan out from the centre of the car, they add presence to the matrix grille that sits directly behind.

Beneath the main grille, the lower grilles have been extended towards the corners of the car by 53 mm (2.09") in either direction. Together with the introduction of new Flying 'B' wing vents, these changes introduce subtle distinctions between the new Mulsanne models.

Among the most recognisable features of the Mulsanne are the headlamps. They have been subtly updated for a sleeker appearance, the two secondary lamps moving up by just a few millimetres, their lower rims now aligning with those of the main lights.

The Mulsanne is just as easily identified from the rear, thanks to its completely redesigned tail lamps. When lit, they form a clear, three-dimensional Bentley Flying 'B' shape, clearly visible in the dark.







### Perfectly proportioned.

The sleek silhouette of the Mulsanne Extended Wheelbase conceals an additional 250 mm (9.8") of extra legroom for rear passengers.

The rear door has been extended, making it easier to get in and out of the car in style. The powerline, a Bentley hallmark since the 1950s, runs down the profile of the body, lending a sense of power and performance to its sleek, sophisticated lines. On this car, its route along the rear fender has been subtly lengthened.

Features like these achieve a striking effect: they allow for incredible space and comfort on the inside, with no compromise to the design of the car on the outside.











## Design: the facts.

### The Mulsanne.

- Steel monocoque body structure with superformed aluminium fenders, bonnet and doors
- Solid stainless steel exterior brightware
- Painted radiator shell with bright stainless steel vertical vanes and matrix grille
- Polished stainless steel Flying 'B' style wing vents
- Oval-style, polished stainless steel exhaust tailpipes
- Full LED headlamps with four auto AFS modes and concealed washer jets
- Flying 'B' style LED rear light clusters

### The Mulsanne Speed.

- Dark tint solid stainless steel matrix grille to radiator, lower front bumper and wing vents
- Dark tint lamps front and rear
- Solid stainless steel 'Speed' badge to front wing vent
- Polished stainless steel 'Speed' treadplate badge
- Unique 21" Mulsanne Speed wheel, individually machined from a forged aluminium alloy blank
- Rifled exhaust tailpipes

### The Mulsanne Extended Wheelbase.

- Rear sunroof with electric blind
- Bright stainless steel vertical vanes and matrix grille to lower bumper centre aperture
- Bright stainless steel Flying 'B' style wing vents with vertical vanes and bright matrix grille
- 21" Radiance wheel by Mulliner (cost option)
- Lengthened rear door incorporating powerline from rear door to tail lamps





PERFORMANCE





## The power behind the throne.

Beneath the exquisitely crafted bonnet of the Mulsanne lies its legendary 6¾ litre twin-turbocharged V8 engine – a handbuilt marvel that can propel the signature model to 60 mph in just 5.1 seconds (0 to 100 km/h in 5.3 seconds) and on to a top speed of 184 mph (296 km/h)\*.

To Bentley, performance has always meant more than raw power, however. Which is why the Mulsanne's Drive Dynamics Control offers four different modes to choose from – Bentley, Sport, Comfort and Custom – for the ultimate in ride and handling, whatever the driver's preference.

Throughout the new powertrain, various innovations come together to deliver a truly luxurious experience. Computer-

controlled active engine mounts have been introduced alongside new air springs and subframe bushes, to reduce engine vibration.

To complement the cabin's state-of-the-art sound insulation, Bentley has collaborated with Dunlop to eliminate much of the noise generated by the tyres when driving on poor road surfaces, reducing sound levels in the whisper-quiet cabin by a further four decibels.

Whether you relax in the rear or you opt instead to take the wheel, the Mulsanne delivers unparalleled performance, in every sense of the word.



## Driving force.

The Mulsanne Speed is the most driver-focused car in the Mulsanne range, delivering phenomenal levels of power and torque, for a truly thrilling drive.

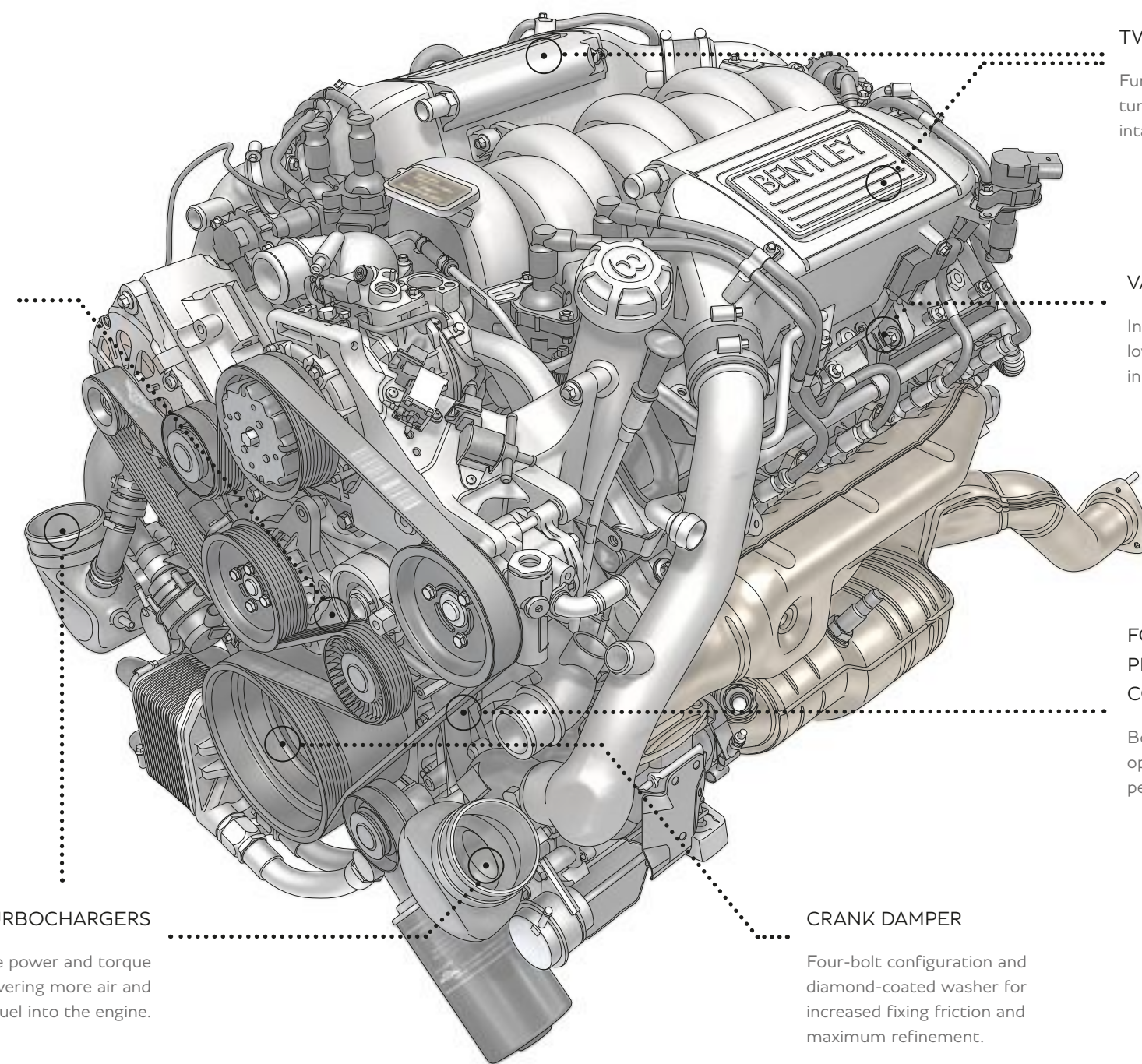
With a power output of 530 bhp (537 PS / 395 kW) and torque levels that can reach 1,100 Nm (811 lb.ft), it is among the most powerful road cars in the world – something that becomes abundantly clear during acceleration: it will surge effortlessly from 0 to 60 mph in just 4.8 seconds (0 to 100 km/h in 4.9 seconds) and ultimately, attain speeds of up to 190 mph (305 km/h).

The car's weight is distributed almost equally between the front and the rear, allowing for an exhilarating drive;

indeed, many drivers are surprised at how agile it feels on the road. The Sport mode, selectable using the Drive Dynamics Control, delivers higher levels of grip, body control and steering accuracy, while the other modes match those of the signature Mulsanne, allowing for a more relaxed ride.

Together, the new brake callipers and carbon ceramic discs are 16 kg lighter than their iron counterparts – a saving that improves both acceleration and dynamic performance, by allowing the suspension to maintain better contact between the road and the tyres. Fade resistance is 20% better, while the brakes themselves can be 10% more effective under heavy usage or hot weather.

This is a car with stopping power, in more ways than one.



### CAM PHASING

For smooth idle quality, increased torque at low rpm and instant throttle response.

### TWIN-CHARGE COOLERS

Further boost the gains from turbocharging by cooling the air intake and increasing its density.

### VARIABLE DISPLACEMENT

Increases fuel efficiency and lowers CO<sub>2</sub> emissions by running in V4 configuration when cruising.

### FORGED CRANKSHAFT, PISTONS AND CONNECTING RODS

Both weight and strength-optimised for best performance and durability.

### TWIN-TURBOCHARGERS

Increase power and torque by delivering more air and fuel into the engine.

### CRANK DAMPER

Four-bolt configuration and diamond-coated washer for increased fixing friction and maximum refinement.





### Performance: the facts.

- Engine: 6¾ litre twin-turbocharged V8
- Transmission: 8-speed automatic transmission with steering wheel mounted paddleshift
- Electronically-controlled air springs with Continuous Damping Control (CDC) to constantly monitor and adjust the vehicle's damping, ensuring optimum control
- Drive Dynamics Control – four driver-selectable settings for CDC and power steering
- Sport mode to lower ride height and increase grip, body control and driving accuracy





## Performance: the figures.

### The Mulsanne.

- Maximum power:  
505 bhp / 377 kW / 512 PS @ 4,000 rpm
- Maximum torque:  
1,020 Nm / 752 lb.ft @ 1,750 rpm
- Top speed: 184 mph / 296 km/h
- Acceleration: 0-60 mph in 5.1 seconds  
(0-100 km/h in 5.3 seconds)

### The Mulsanne Speed.

- Maximum power:  
530 bhp / 395 kW / 537 PS @ 4,000 rpm
- Maximum torque:  
1,100 Nm / 811 lb.ft @ 1,750 rpm
- Top speed: 190 mph / 305 km/h
- Acceleration: 0-60 mph in 4.8 seconds  
(0-100 km/h in 4.9 seconds)

### The Mulsanne Extended Wheelbase.

- Maximum power:  
505 bhp / 377 kW / 512 PS @ 4,000 rpm
- Maximum torque:  
1,020 Nm / 752 lb.ft @ 1,750 rpm
- Top speed: 184 mph / 296 km/h
- Acceleration: 0-60 mph in 5.3 seconds  
(0-100 km/h in 5.5 seconds)



INTERIOR







### Inside information.

When it comes to luxury, attention to detail is everything. Which is why the Mulsanne's interior is crafted with only the finest leathers, woods, metals and wools, each treated with specific care and utmost attention.

Up to seventeen hides are needed to fashion the leather upholstery for a Mulsanne – more than in any other car. And they are stitched with such pride that the upholsterers sign the back of each one, prior to completion.

Every veneer surface is mirror-matched, a process by which each sheet of veneer is fitted opposite another piece cut from the same part of the same tree. The result is a symmetrical cabin, right down to the natural grain of the wood. The finishes available can only be achieved by lacquering and sanding each piece at least five times.

Solid stainless steel fittings feature throughout, from something as visible as the organ stop controls of the air vents to the hinges hidden inside the glove box.

Such dedication to every detail is Bentley's hallmark. Indeed, there was a time when every car was made to the measure of its owner. At Bentley, we still work this way.







## An exquisite space to think.

As the pinnacle of luxury performance, the Mulsanne is a space like no other: quiet, calm and comfortable – whether driving or being driven.

Design and detail are paramount to the interior. And the first place you might notice is the seats. At the front, both feature 14-way electrical adjustment, while the rear seats have eight-way electrical adjustment. All are equipped with lumbar support, two memory positions and adjustable heating.

Air quality and circulation are vital to cabin comfort. They are controlled by a four-zone air conditioning system with separate front and rear units to regulate fan speeds and temperature. Polished bulls-eye air vents and organ stop controls are also found throughout.

For those who want an extra level of comfort and privacy, the optional Comfort Specification includes rear seat headrests with airline ‘sleeper’ style wings that adjust to cradle the head, as well as super-soft Alcantara headrest pads and comfort bolsters.

Privacy curtains, smoothly controlled from the driver’s seat or rear compartment, together with window blinds and Comfort Specification,\* can thoughtfully transform the Mulsanne’s rear cabin into a private haven of peace.





## Experience the beauty of space.

With an extra 250 mm (9.8") of legroom for passengers in the rear and the option of airline-style reclining seats, the Mulsanne Extended Wheelbase delivers the ultimate in passenger luxury.

In the comfort of its exquisite rear cabin, you can experience a completely new infotainment system. With updated telephone and wireless networking, it enables the car's occupants to enjoy all their digital content, or work effectively on the move.

An elongated central console runs the length of the cabin, its handcrafted veneers concealing a wealth of cleverly designed

storage options for the comfort of rear passengers, alongside controls for heating and ventilation, seats and entertainment.

Hide-trimmed picnic tables fold out from the console, their smooth, silent movement the result of a precision mechanism that was designed and handmade by Bentley.

With a suite of technology options including the Bentley Theatre rear seat entertainment system and Naim for Bentley, arguably the world's finest in-car sound system, the cabin of the Mulsanne Extended Wheelbase can be considered a true home from home.











### Mulsanne: the facts.

- Supremely comfortable seats with a choice of 24 traditionally tanned hide colours
- Hand-finished veneers, taking over 78 hours for each car
- Traditional polished stainless steel bulls-eye air vents and organ stop controls
- Bright interior fittings in solid stainless steel
- Unique glass-effect switches
- Specially developed deep-pile carpets





### Mulsanne Speed: the facts.

- Unique 'Speed' interior hide colour split
- Diamond quilted hide door panels and seats
- Embroidered Bentley emblems to four seats
- Indented hide headlining
- Drilled alloy sports foot pedals
- Coined finish to interior door handles
- Knurled sports gear lever
- Knurled finish to organ stops





### Mulsanne Extended Wheelbase: the facts.

- Airline-style reclining seats with electrically deployed footrests\* create additional space for rear passengers
- Comfort headrests and super-soft Alcantara headrest cushions\*
- Long console with twin deployable picnic tables, optional frosted glass bottle cooler, USB ports and additional stowage\*
- Rear sunroof with electric sunblind
- Electrically deployed curtains in rear cabin
- Veneered door panels
- Cabin illumination with touch-sensitive controls



TECHNOLOGY





## Ideas in motion.

Much of the Mulsanne's technology works quietly in the background. Nevertheless, its effect on the car's occupants can be profound.

Take the air spring suspension, marshalled electronically by the Continuous Damping Control system. It enables the car to adjust its ride height, responding automatically to changes in speed and weight. And, in parallel with the speed-sensitive power steering, it allows for a choice of four driving modes, with which the driver can tune the settings to their liking.

Adaptive Cruise Control ensures the Mulsanne keeps a safe distance from the car in front. Should the traffic slow to a stop, the Mulsanne will too, automatically moving forward again when it becomes safe to do so. At very low speeds, it can start, stop and inch forwards with no driver input at all.

The Blind Spot Assist function employs two short-range radars at the rear of the car to monitor the Mulsanne's blind spots at speeds from 10 km/h to 250 km/h (6 mph to 155 mph). A visual warning is given in the door mirrors should another vehicle enter these areas.

When visibility is limited, two cameras assist the driver. Concealed in the rear licence plate aperture, the Rear View Camera is activated automatically whenever reverse gear is selected. Optional Corner View Cameras on the front and rear of the car provide a wide-angle view of the road when emerging from garages, gateways or side streets – whether driving forwards or in reverse. Whatever the manoeuvre, the new Mulsanne provides the information you need to keep the car and its occupants safe.

Outside the car, the new all-LED headlamps are linked to GPS and feature light-sensing technology, enabling them to operate automatically. Four different light modes are automatically selected, for driving in town, in the country, on the motorway or in situations where you simply need the powerful main beam.







## Fast moving technology.

Every Mulsanne is equipped with a cutting-edge suite of digital information and entertainment technology.

Set into the sleek veneers of the dashboard, a new 8" touch-screen controls the infotainment and vehicle systems, with 4G connectivity for faster response times, an improved user experience, and compatibility with Apple CarPlay.

Google Maps,\* satellite imagery and Street View\* bring a new dimension to the navigation system, allowing the driver to see routes, junctions and destinations.

Mobile phones and tablets can be connected to the car via Bluetooth, or the USB ports in either the media drawer or the glove box, allowing them to be charged while sharing their data. An in-car WiFi hotspot provides high speed\*\* access for eight such devices.

Two new mobile apps have been created to work with the car.

My Bentley allows the car's systems to share data with a phone or tablet, allowing the driver to navigate to the address of a contact or appointment stored on the device, with just one tap on the dashboard touchscreen.

Created exclusively for the Mulsanne, Smart Remote allows passengers to control the radio and entertainment system using their smartphones or tablets. They can see vehicle data on their devices and even set reminder alarms that will go off at a certain time or distance from their destination, making it easier to relax or work en route.

Both apps are available for Apple and Android devices.



## Theatre of dreams.

The Mulsanne features acoustic glazing and unrivalled soundproofing, insulating the cabin from the sounds of the world outside. Features like this are rare in a car, yet they are essential for the uninterrupted enjoyment of the Mulsanne's 14-speaker audio system.

In models fitted with the new Bentley Theatre rear seat entertainment system, twin 10.4" tablets are beautifully concealed in the back of the front seats, electrically deploying at the touch of a button and adjusting for optimum viewing angle. Using the vehicle's on board WiFi and able to run the same media or different sources simultaneously, the Android-based system provides access to Skype video calls, radio, TV, internet and media stored in the vehicle's hard drive or DVD changer.

Fully integrated with the vehicle, the system allows passengers to plan a route and send this directly to the car's navigation system and can display vehicle-related data such as time to destination and fuel level. The tablets themselves have independent media storage capacity to enable them to be removed and operated independently of the car.

For serious audiophiles, there is the option to upgrade to the Naim for Bentley premium audio system. Designed to be the best in-car audio in the world, the system delivers 2,200 watts of aural perfection through the world's most powerful production amplifier and 20 high-performance speaker drive units. Eight DSP modes have been fine-tuned by sound experts to showcase the system's unrivalled quality.







PERSONALISING YOUR CAR





## Create a car in a billion.

The Mulsanne offers so many options that the number of possible combinations runs into the billions. At the current rate of production, the factory could build them for 100,000 years without ever making two the same.

From the exterior paint to fine details like the steering wheel upholstery and the finishes on the foot pedals, almost every visible feature can be customised to your specification.

Every Mulsanne is crafted from the finest materials. But what really makes it special is the vision of its owner. It is this, ultimately, that makes every Mulsanne unique.





- 1 Violette
- 2 Grey Violet
- 3 Pale Velvet
- 4 Havana\*
- 5 Black Velvet\*
- 6 Azure Purple
- 7 Magenta
- 8 Passion Pink
- 9 Rubino Red
- 10 Sunset
- 11 Damson
- 12 Burgundy\*
- 13 Dragon Red II
- 14 St. James' Red (Pearlescent)
- 15 St. James' Red (Solid)\*
- 16 Candy Red
- 17 Orange Flame
- 18 Claret
- 19 Amber
- 20 Burnt Orange
- 21 Bronze
- 22 Julep
- 23 Khamun
- 24 Monaco Yellow (Solid)
- 25 Bentayga Bronze
- 26 Sunburst Gold
- 27 Special Magnolia (Pearlescent)
- 28 Gazelle\*
- 29 Extreme Silver Satin
- 30 Old English White (Solid)
- 31 Special Magnolia (Solid)
- 32 Camel\*
- 33 Breeze
- 34 Rose Gold
- 35 Magnolia (Solid)
- 36 Silver Storm\*



- 37 Silver Taupe
- 38 Silver Frost
- 39 Ghost White (Pearlescent)
- 40 White Satin
- 41 Ice
- 42 Hallmark\*
- 43 Arctica (Solid)
- 44 Moonbeam\*
- 45 Magnetic
- 46 White Sand\*
- 47 Extreme Silver
- 48 Light Grey Satin
- 49 Porcelain
- 50 Glacier White (Solid)\*
- 51 Silver Tempest
- 52 Sandstone
- 53 Dove Grey (Solid)
- 54 Light Gazelle
- 55 Pale Brodgar
- 56 Venusian Grey
- 57 Dark Cashmere\*
- 58 Dark Grey Satin
- 59 Tungsten
- 60 Burnt Oak
- 61 Arabica
- 62 Brodgar\*
- 63 Granite\*
- 64 Cumbrian Green
- 65 Barnato (Solid)
- 66 Midnight Emerald\*
- 67 Light Onyx
- 68 British Racing Green 4 (Solid)
- 69 Anthracite Satin
- 70 Storm Grey
- 71 Spruce
- 72 Verdant



- 73 Light Emerald
- 74 Radium
- 75 Apple Green
- 76 Cypress
- 77 Alpine Green\*
- 78 Glacier Blue (Solid)
- 79 Jetstream II
- 80 Light Windsor Blue
- 81 Silverlake
- 82 Portofino\*
- 83 Aquamarine
- 84 Neptune
- 85 Light Sapphire
- 86 Kingfisher
- 87 Pale Sapphire
- 88 Fountain Blue\*
- 89 Marlin\*
- 90 Peacock
- 91 Sequin Blue
- 92 Moroccan Blue
- 93 Blue Crystal
- 94 Thunder\*
- 95 Anthracite
- 96 Meteor\*
- 97 Windsor Blue
- 98 Dark Sapphire\*
- 99 Onyx\*
- 100 Titan Grey\*
- 101 Spectre
- 102 Beluga (Solid)\*
- 103 Oxford Blue (Solid)
- 104 Black Crystal
- 105 Black Sapphire
- 106 Royal Ebony

\*Standard colours.  
Please note, the colours reproduced are for representation purposes only and therefore vary slightly from the actual vehicle.



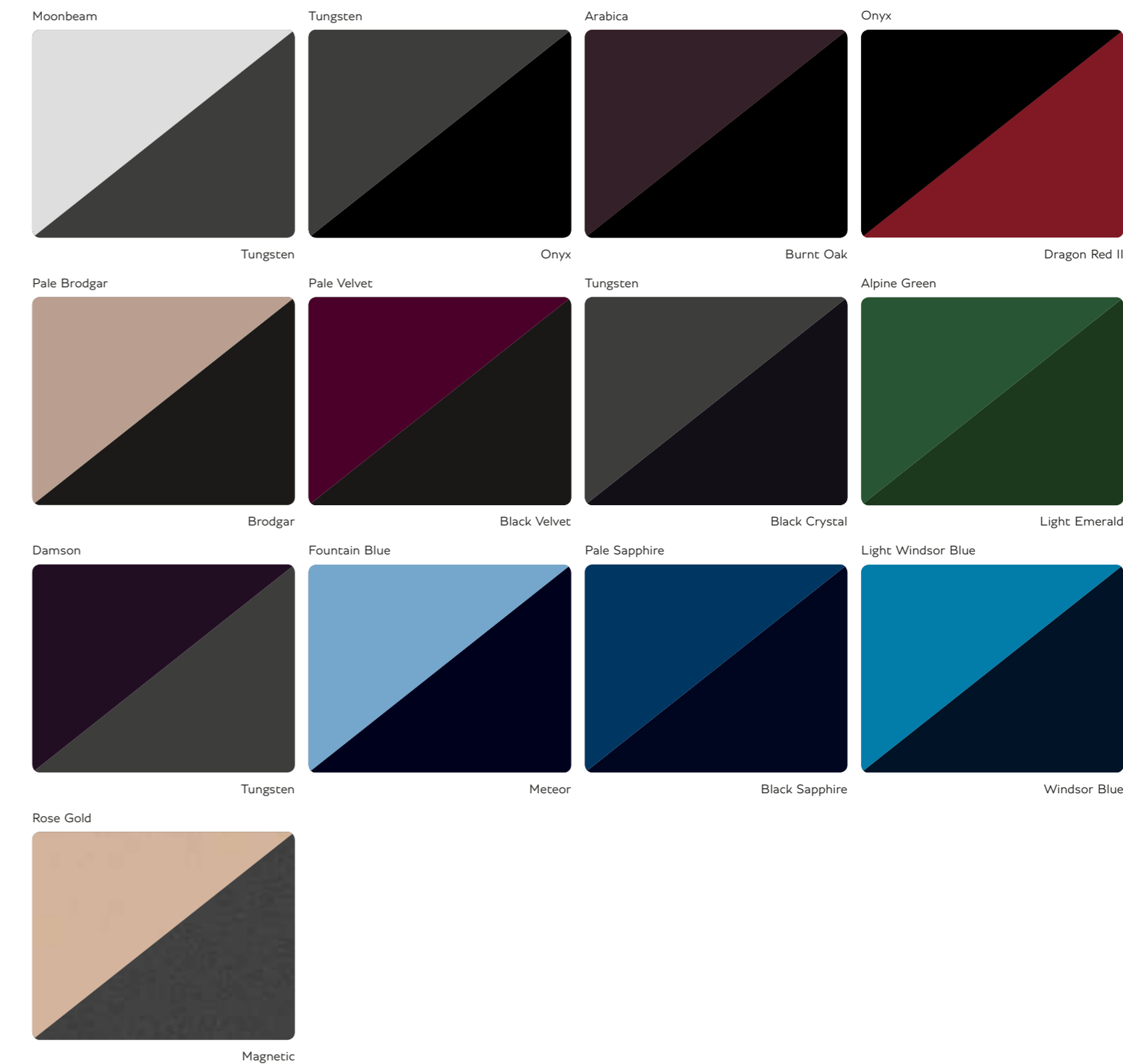


### Duo-tone colour collection.

Duo-tone paint finishes give you the opportunity to create an even more individual exterior and give the Mulsanne your own style.

The Bentley Colour and Trim team have created a range of duo-tone combinations which provide the perfect complement for the Mulsanne, and accentuate its flowing lines.

You may choose from a palette of complementary colours offering light over dark, or dark over light, all of which are meticulously applied and finished.





## Colour with meaning.

With over 100 colours – including eleven blacks – and even more options when duo-tone combinations are considered, the Mulsanne offers an incredible choice of exterior colours.

But if this extensive palette still isn't enough, our paint specialists can perfectly match any colour sample you

provide – and reproduce it in a mirror-like finish. In the past, bespoke colours have been created to match dresses, wrapping paper and a food blender. One customer even brought in his golf shoes, requesting an identical duo-tone finish for his Mulsanne.





Not all wheels are created equal.

Every Mulsanne wheel is engineered at the Bentley factory in Crewe – and designed by the team responsible for the Mulsanne’s sleek silhouette. They are available in a range of designs and sizes, from those that emphasise elegance to styles of a more sporting nature. For full all-weather capability, winter compound tyres are also available from your Bentley retailer.



20" MULSANNE  
ALLOY WHEEL – PAINTED



21" MULSANNE SPEED  
WHEEL – PAINTED



21" CLASSIC  
ALLOY WHEEL – PAINTED



21" RADIANCE ALLOY WHEEL  
BY MULLINER – PAINTED



21" MULSANNE SPEED WHEEL – DARK TINT  
WITH BRIGHT MACHINED ACCENTS



21" MULSANNE SPEED  
WHEEL – POLISHED



21" CLASSIC  
ALLOY WHEEL – POLISHED



21" RADIANCE ALLOY WHEEL  
BY MULLINER – POLISHED





## Flawlessly finished.

Bentley's craftsmen and women work with an enormous variety of wood species to create the veneered surfaces of the Mulsanne cabin, all sourced ethically from forests around the world. Subject to rigorous sustainability requirements, veneers can even be created from trees on a customer's land.

Turning the raw material into a finished veneer is a painstaking process; one that takes around five weeks for every car. The first three are reserved for the untreated sheets to be humidified and pressed, stabilising them to ensure there is no shrinkage or cracking later on.

Every sheet is sanded and lacquered five times, over a period of a further ten days. Finally a UV layer is applied, to protect the finish from the sun for years to come.

Wood is not the only way to finish the fascia of your car. For a truly individual cabin, you can even consider materials as exotic as slate and quartzite stone.







Birds Eye Maple



Olive Ash



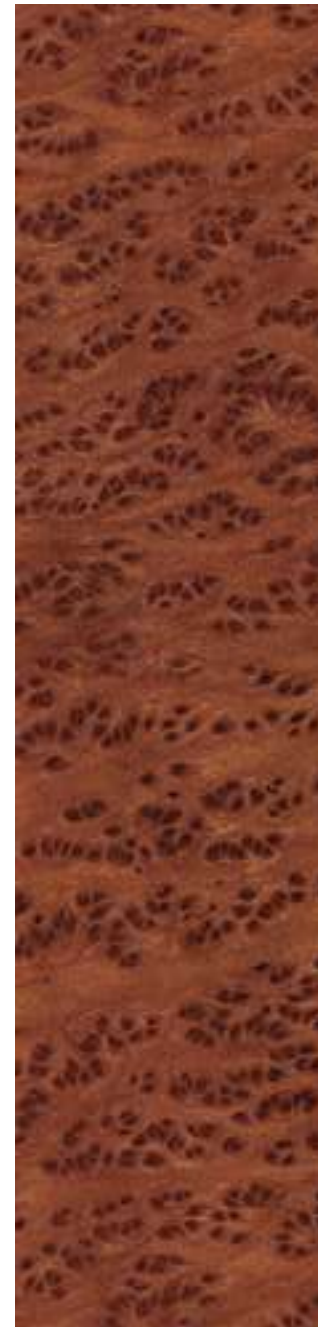
Tamo Ash



Chestnut



Burr Walnut\*



Vavona



Liquid Amber



Dark Stained Madrona



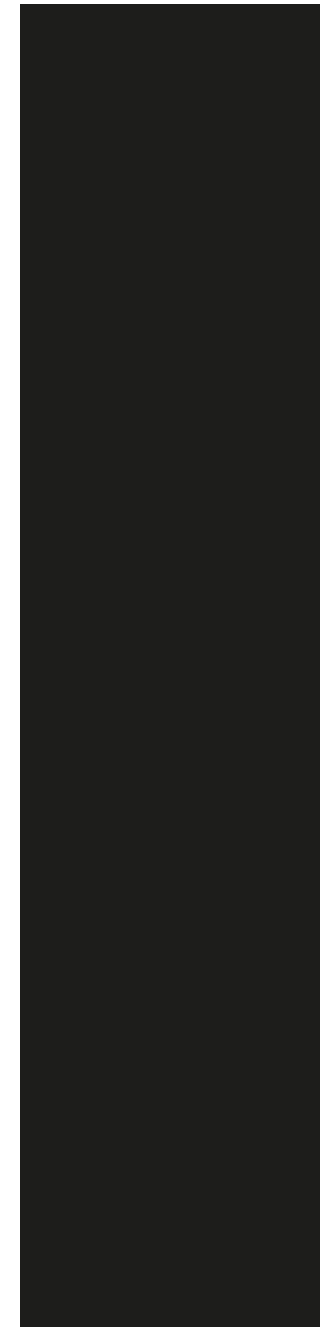
Dark Stained Vavona



Dark Stained Burr Walnut†



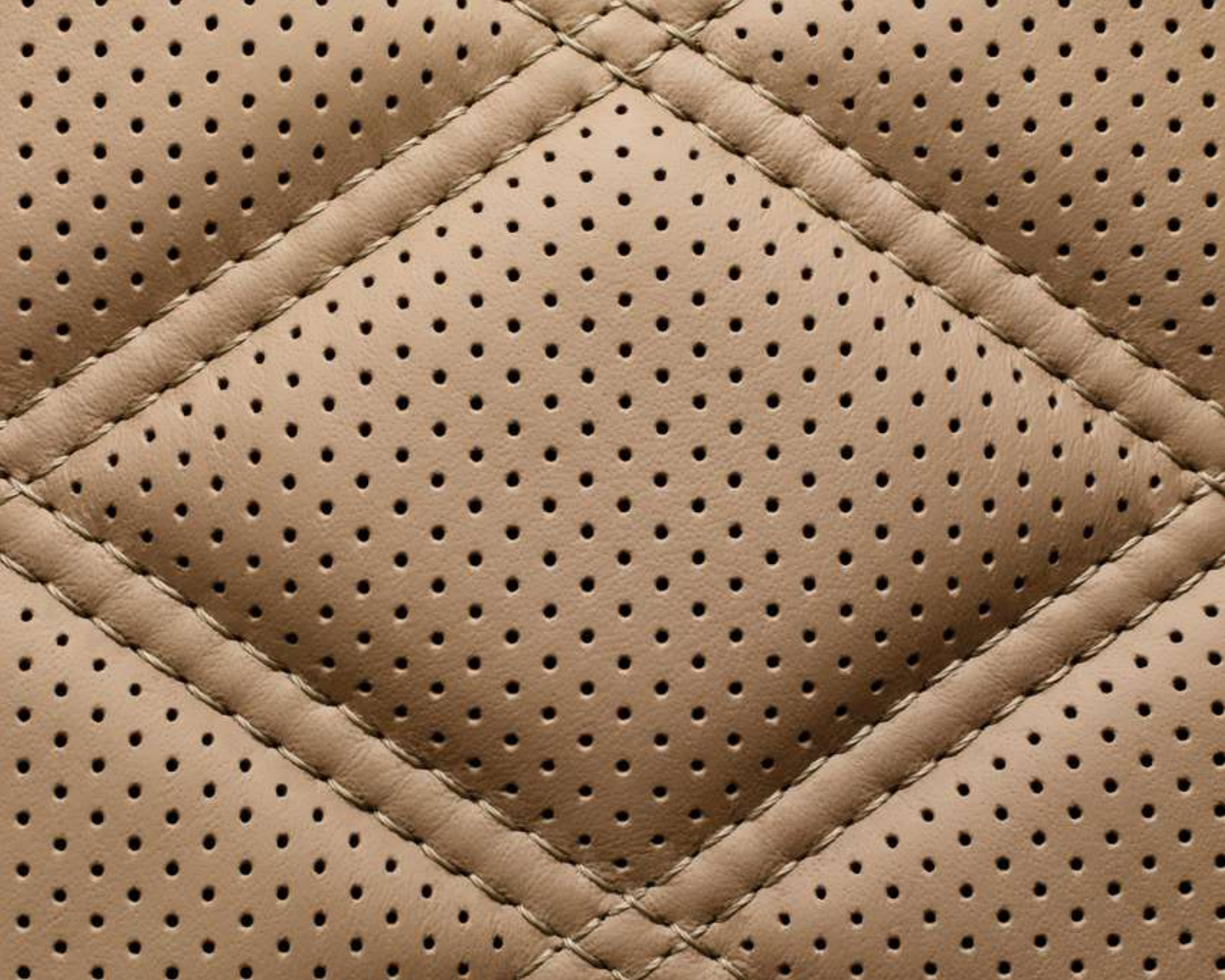
Dark Fiddleback Eucalyptus†



Piano Black†

\*Standard veneer. †No cost option. All other veneers are a cost option. Please note, the colours reproduced are for representation purposes only and therefore vary slightly from the actual vehicle.





## Handcrafted hides.

It takes no fewer than seventeen hides to complete the opulent interior of one Mulsanne.

A special tanning process guarantees a natural leather aroma, reminiscent of classic Bentley interiors. The hides are then dyed in a range of over 20 colours, with bespoke hues available on request. Leather connoisseurs can even opt for the softer, more natural finish of semi-aniline hides.

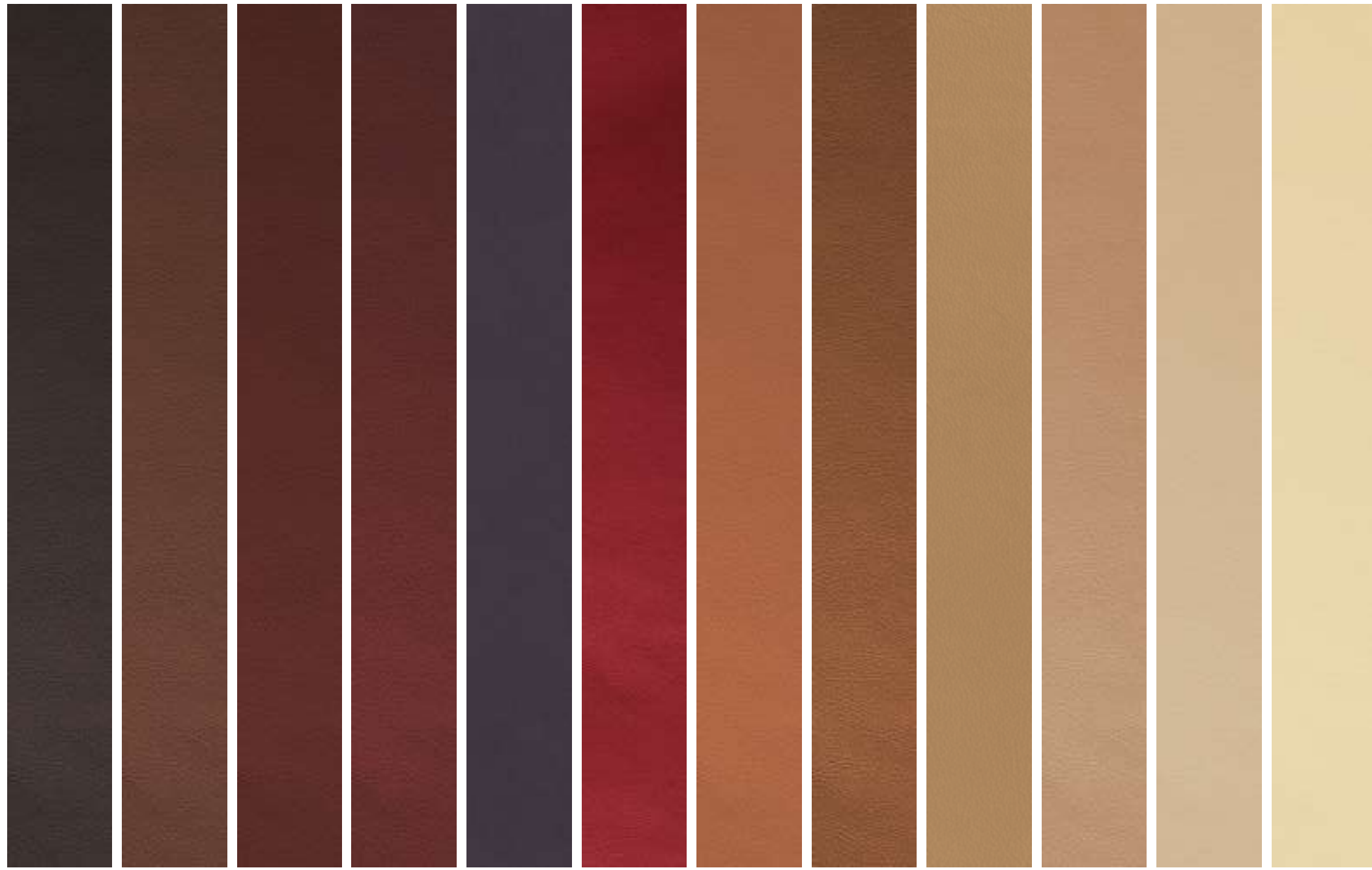
All hides are tested for durability to standards three times higher than those used by other car manufacturers. They are tested against UV radiation and, because Bentley windows block UV rays, they are even tested for heat resistance by subjecting them to a constant temperature of 120°C for a week.

Sections with high natural elasticity are used for curved surfaces like the seats, rather than piping or flatter areas like the door inserts. To minimise the number of seams on the instrument panel, the leather is specially treated to ensure the airbag can be deployed.

On average, it takes around 37 hours to complete the leather interior of one car, five of which go into the leather steering wheel alone. This is deliberate: few parts of your car will be held in your hands quite so often. It is even covered in a different type of leather, more resistant to the natural chemicals it absorbs from the driver's skin.







Burnt Oak   Cognac   Redwood   Fireglow   Damson   Hotspur   Newmarket Tan   Saddle   Camel   Autumn   Twine   Magnolia



Saffron   Cashew   Shortbread   Linen   Portland   Cumbrian Green   Porpoise   Anthracite   Brunel   Imperial Blue   Highland Hare   Beluga



## Interior options.

A plethora of interior options have been created for the Mulsanne, each one thoughtfully designed and crafted to unparalleled standards. The optional refrigerated bottle cooler by Mulliner, for example, holds two bottles – keeping them in a canted position to avoid spillage, even when they are open.

Discreetly hidden behind the rear seats, the cooler features a powered, frosted glass cover and white LED lighting, with holders for three bespoke champagne flutes, designed by David Redman of London and inspired by the Mulsanne wheel design.

For those who prefer to enjoy non-alcoholic beverages, Mulliner offers a cooler, which includes two tumbler-style glasses instead of champagne flutes. The illuminated cocktail cabinet, meanwhile, holds two crystal decanters, two hand-cut crystal tumblers and a stainless steel hip flask. With LED accent lighting, it is finished in veneers that match the rest of the car.

From privacy curtains to ambient interior mood lighting, there are countless examples of optional features that can add to your individual Mulsanne experience.



## Interior options: the facts.

- Comfort Specification
- Contrast or cross-stitching
- Emblem stitching
- Hide trimmed and veneer steering wheel
- Heated steering wheel
- Ventilated seats with massage function
- Leather seat piping
- Veneered picnic tables
- Deep-pile Wilton carpet overmats or lambswool rugs
- Illuminated fold down vanity mirrors
- Frosted glass, refrigerated bottle cooler with bespoke crystal champagne flutes
- Curtains to rear cabin
- Bentley wing badge and chrome inlay strip to waistrails
- Long console with twin deployable picnic tables and enhanced stowage
- Airline-style reclining seats (two in rear cabin, including comfort headrests)

Please note that some items listed above are included in the standard specification of either the Mulsanne Speed or the Mulsanne Extended Wheelbase. For more details, please consult your Bentley retailer.







## Distinguishing marques.

Bentley is not the only badge seen on cars built at the factory in Crewe. For decades, the site has also been home to Mulliner, a marque with an equally rich history.

The Mulliner family began making saddles in the 16th Century. From there, they moved on to carriages and, as the 20th Century dawned, coach-built bodies for some of the world's first motor cars. They built the bodies of many early Bentleys, forming a creative partnership that would endure to the present day.

Today, Mulliner is wholly owned by Bentley. It has its own workshop and design team within the factory, dedicated to helping the most discerning Bentley customers to personalise their cars.

The team can make bespoke modifications to practically any aspect of the Mulsanne, from personally commissioned colour schemes to unique coach-built cars.

Mulliner is the definition of personal commissioning.



## Redefining driving.

Available for the signature Mulsanne model, the Mulliner Driving Specification comprises a carefully curated collection of sport-themed additions, for a more dynamic edge to the interior and exterior of your car.

- 21" Radiance alloy wheel by Mulliner
- Unique Mulliner treadplate plaques to all door sills
- Sports-tuned driver-selectable suspension and steering settings
- Diamond quilted seats and door panels with perforated hide
- Indented hide headlining
- Knurled sports gear lever with hand cross-stitched hide
- Coined interior door handles
- Knurled organ stop air vent controls
- Drilled alloy sports foot pedals
- Embroidered Bentley emblems to the front and rear seats

## Redefining luxury.

Not all Mulliner modifications are made for the driver alone. The Mulliner Specification, available for the Mulsanne Extended Wheelbase, focuses on heightened style and passenger luxury.

- 21" Radiance alloy wheel by Mulliner
- Unique Mulliner treadplate plaques to all door sills
- Diamond quilted seats and door panels with perforated hide
- Indented hide headlining
- Coined interior door handles
- Knurled organ stop air vent controls
- Embroidered Bentley emblems to the front and rear seats
- Lambswool rugs to front and rear
- Rear quarter vanity mirrors with veneer surround







## Unleash your imagination.

While many handcrafted Mulliner accessories have already been designed, the opportunity to create a truly unique car can only be seized with a bespoke commission.

Mulliner's Bespoke Hide Service enables you to commission hides in the hue of your choice, based on any sample you care to provide. And your personal colour scheme needn't stop there. Stitching, seatbelts, carpets and even the speaker grilles can be coloured according to your taste.

For a more subtle approach, Mulliner's Hidden Delights option adds the accent colour of your choice to the interior of the glove box and other storage areas, just as a Savile Row tailor might add a vivid lining to a bespoke suit.

Your name, monogram or company logo can also be reflected in the finish of your car. It can be engraved in your Mulsanne's treadplates, which can be illuminated if you wish. It can even be integrated into the veneers or embroidered onto any suitable location in the cabin.

Marquetry – the process of applying pieces of veneer in contrasting colours to create shapes or pictures in the surface – can also be created to your specification. Mulliner has created numerous examples of bespoke marquetry, from commemorative emblems to detailed pictures using materials such as mother-of-pearl.

Even something as simple as stitching can be taken to a new level. Contrasting colours can be used in conjunction with Bentley's trademark diamond quilting to striking effect. Cross-stitching can be applied by hand to any part of the cabin where the surface is leather.

The team will be happy to discuss your ideas, from the simplest modification to the design of entirely new features. From atomisers and umbrella holders to exquisite vanity sets and cigar humidors there is no end to the list of bespoke modifications Mulliner can make to your Mulsanne. There is, quite simply, no better way to create the car of your dreams.





DESIGNER'S CHOICE



### Designer's choice.

When colours are combined successfully, the results can be breathtaking. Even the subtlest adjustment to one hue can unlock the beauty in others. On the pages that follow, our designers demonstrate the power of a well-planned palette, with a selection of their personal favourites.

To configure a Mulsanne of your own, go to [BentleyMotors.com/Configurator](http://BentleyMotors.com/Configurator).





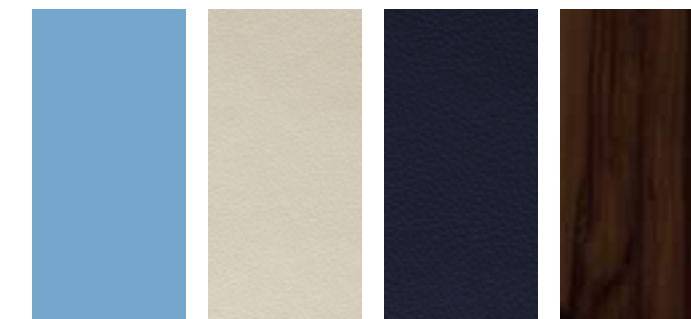


## Nimbus.

A Fountain Blue exterior encases a cabin characterised by the light, airy feel of Linen hide, contrasted with darker Imperial Blue secondary hide. For the veneer, the rich flow of Liquid Amber completes an exquisite picture.



Mulsanne



Exterior Paint:  
Fountain Blue

Main Hide:  
Linen

Secondary Hide:  
Imperial Blue

Veneer:  
Liquid Amber



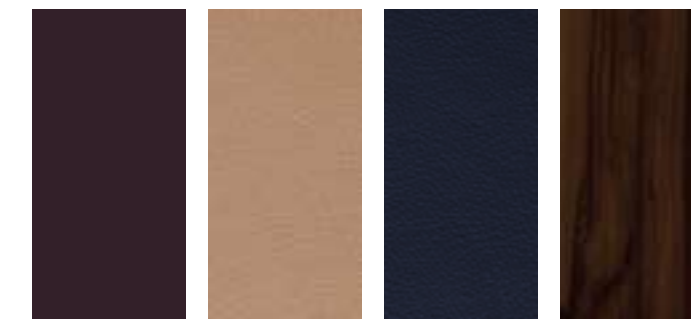


## Dusk.

The exterior of this imposing Mulsanne reflects the rich bronze tones of its Arabica paintwork. Inside, Autumn hide is paired with an Imperial Blue secondary hide to form a warm cocoon of comfort.



Mulsanne



Exterior Paint:  
Arabica

Main Hide:  
Autumn

Secondary Hide:  
Imperial Blue

Veneer:  
Liquid Amber



## Bullion.

The cool gold of this Mulsanne Speed's Julep exterior contrasts powerfully with its dark tint lamps and brightware. Inside, futuristic Carbon Fibre surfaces bring a racier touch and feel to the Beluga hide and Piano Black veneer, the dark sophistication further punctuated by the unexpected neon flashes of Mulliner Hidden Delights.



Mulsanne Speed



Exterior Paint:  
Julep

Main Hide:  
Beluga

Secondary Hide:  
Beluga

Veneer:  
Piano Black



## Red Mercury.

With a duo-tone exterior comprising Onyx and Dragon Red, this Mulsanne Speed is nothing if not devilishly handsome – an effect enhanced by the addition of black Mulliner wheels and brightware, alongside twin Hotspur fine lines. Inside, Beluga leather hide and Dark Stained Vavona veneer complement the sense of dark sophistication.



Mulsanne Speed



Exterior Paint:  
Onyx over  
Dragon Red

Main Hide:  
Hotspur

Secondary Hide:  
Beluga

Veneer:  
Dark Stained  
Vavona



### Synchronicity.

A striking duo-tone combination of Rose Gold and Magnetic perfectly complements the lines and proportions of the new Mulsanne Extended Wheelbase – hence our choice to make it our featured car in this book. Inside, contrasting Twine and Porpoise hides evoke an attitude as bold as that conveyed by its exterior finish. Meanwhile, the optional Mulliner Specification adds sporting style, inside and out.



Mulsanne Extended Wheelbase



Exterior Paint:  
Rose Gold over  
Magnetic

Main Hide:  
Twine

Secondary Hide:  
Porpoise

Veneer:  
Dark Stained  
Vavona





## Gun Metal.

A sleek Extreme Silver body and 21" Radiance wheels give way to an interior with real edge. Camel and Brunel hides complement drilled foot pedals and knurled brightware, courtesy of the optional Mulliner Specification, while the silken veneer displays the unmistakable vertical stripe of Dark Fiddleback Eucalyptus.



Mulsanne Extended Wheelbase



Exterior Paint:  
Extreme Silver

Main Hide:  
Camel

Secondary Hide:  
Brunel

Veneer:  
Dark Fiddleback  
Eucalyptus



WORLD OF BENTLEY







PRIVACY CURTAINS

## Accessories.

Our designers and engineers are involved in setting the specifications for each of the accessories for the Mulsanne, which are then rigorously tested to Bentley standards.

Accessories include protective personalised car covers for both indoor and outdoor use, privacy curtains and winter traction aids for snow and ice.

The jewelled Bentley torch features the Bentley 'B' etched into the lens, while a child seat trimmed with Bentley upholstery can even be embroidered with your child's name.

For details of our full accessories range, please contact your local Bentley retailer.



ILLUMINATED TREADPLATES



MATRIX GRILLE TIES (RED AND LIGHT BLUE)

## Bentley Collection.

In the Bentley Collection, contemporary design meets the finest materials. From Cashmere throws to bespoke luggage sets and bags inspired by the brand's early days, every item embodies the essence of the Bentley marque – unparalleled craftsmanship and incredible attention to detail.

To view the entire Bentley Collection, please contact your local Bentley retailer or visit the online store at [BentleyCollection.com](http://BentleyCollection.com)



ORGAN STOP CUFFLINKS



JEWELLED TORCH



BRANDED VALVE CAPS



CHILD SEAT (GROUP 2 + 3)



CONTINENTAL HANDBAG (BURNT OAK)



TIBALDI PENS



CONTINENTAL WEEKENDER (DARK SAPPHIRE)





## Bentley events.

Every year, Bentley runs a series of events exclusively for Bentley drivers, enthusiasts and those looking for a more rewarding set of experiences and a closer acquaintance with the Bentley brand.

From the pure exhilaration of Power on Ice, which offers guests an experience beyond expectation, to Grand Tours through some of Europe's most impressive landscapes, our range of unique events offer something for every intrepid Bentley explorer.

To discover more, visit [Events.BentleyMotors.com](http://Events.BentleyMotors.com)

## Financing your Mulsanne.

Finance agreements are tailored to ensure you make the most of your investment.

While other financiers look only at their customer, the Bentley Financial Service experts create bespoke packages, based not just on your personal circumstances, but also on the car you commission.

To discover more, please visit your local Bentley retailer or visit [BentleyMotors.com](http://BentleyMotors.com)



[Events.BentleyMotors.com](http://Events.BentleyMotors.com)



## The Bentley Experience.

The Bentley Experience begins at CW1 House, offering you an immersive and memorable brand experience at the home of the Bentley factory in Crewe – where each and every one of our cars is crafted to perfection.

The CW1 House showroom contains the full model range with a brand new personalisation area, bespoke Mulliner room and dedicated boutique, giving you a clear window into the world of the Bentley brand.

With the opportunity to visit Bentley's factory, the Bentley Experience offers a unique insight into the world-class design and engineering required to create a Bentley motor car. Factory visits are available exclusively to customers.

When you commission your Bentley in person, you will discover exactly what craftsmanship means. A customer host will tailor every detail of your visit to your time, tastes and interests, right down to selecting the colour of thread used to cross-stitch the interior you desire. Whether you have an hour to spare or a whole day, seeing the way your car is made will only accentuate the pleasure of owning it.

To book a factory visit, please contact your Bentley retailer.





## Over to you.

The Mulsanne is the pinnacle of the Bentley range and arguably, the most exquisite and powerful luxury car available anywhere in the world. So it stands to reason that, to fully appreciate its qualities, you need to experience it in person.

To arrange a test drive, please contact your local Bentley retailer or, for more information, visit [BentleyMotors.com](http://BentleyMotors.com)





## SPECIFICATIONS AND OPTIONS





## The Mulsanne

### STANDARD SPECIFICATION

#### CHASSIS

- Mulsanne 20" light-alloy wheels with 265 x 45 x ZR20 tyres
- Tyre cavity resonance dampers
- Double wishbone front suspension
- Multi-link rear suspension with toe and brake reaction control. Uniquely developed for Mulsanne to handle extreme torque
- Electronically-controlled air springs with Continuous Damping Control (CDC) to constantly monitor and adjust the vehicle's damping, ensuring optimum control
  - Automatic ride height control, sensitive to speed and load
- Servotronic speed-sensitive power steering with two settings selectable by Drive Dynamics Control
- Drive Dynamics Control – four driver-selectable settings for CDC, engine management (cylinder deactivation) and power steering:
  - Three standard modes: Bentley, Sport and Comfort
  - A fourth mode, Custom, allows the driver to tune the system to a preferred driving style
  - Electronic Stability Control (ESC) with ABS, traction control, hydraulic brake assist, electronic brake pre-fill and automatic hill-hold control
- Twin-booster braking system with ventilated discs and Electronic Brake force Distribution (EBD)
  - Bentley-branded front brake callipers
  - Front brake discs: two-piece assembly with 400 mm diameter x 38 mm iron disc and lightweight aluminium hub
  - Rear brake discs: 370 mm diameter x 30 mm iron disc with lightweight aluminium hub
  - Electronic parking brake with drive-away assist and hill-hold feature
- Choice of tyre repair/inflation kit or emergency spare wheel and toolkit

#### BODY & EXTERIOR

- Steel monocoque body structure with front and rear energy-absorbing crumple zones
- Aluminium closures
  - Superformed aluminium front wings
  - Aluminium bonnet
  - Aluminium doors with superformed structure and extruded aluminium side impact beams
- Composite polymer bootlid housing fully concealed antennae systems
- Painted radiator shell with bright stainless steel vertical vanes and matrix grille and 2D Bentley winged 'B' badge
- Paintwork applied and polished by hand to a mirror finish
  - Choice of 25 paint colours especially selected for Mulsanne
- Bright stainless steel matrix grilles to lower bumper apertures and wing vents
- Polished stainless steel brightware to glass surrounds
- Polished stainless steel embellishers to doors and bumpers
- Door pillar finishers in steel with gloss black painted finish
- Polished stainless steel 'Mulsanne' treadplates and commissioning plates
- Wide oval polished stainless steel exhaust tailpipes
- Full LED headlamps with four auto AFS modes, LED halo for supplementary main beam, light sensing auto operation, daytime running light signature and concealed washer jets
- Flying 'B' style, LED rear light clusters and discreet high-level stop lamp to rear screen
- Colour-keyed, electronically adjustable door mirrors with heating, power folding, reverse-dip, two memory positions, electrochromatic dimming and integrated puddle lamps
- Keyless entry system with chromed metal door handles and engine start button
- Soft-close power latching to all doors for easy entry/exit
- Power bootlid operation with emergency releases inside boot and under rear seat
- Park distance control to front and rear with audible signal and graphics displayed via infotainment screen

#### INTERIOR

- Hand-selected leather to all trimmed surfaces including seating, fascia, console, door panels, door pillars, parcel shelf, cantrails, headlining, sunvisors, all stowage compartments and glove box
  - 24 'standard' colours in single-tone or duo-tone combinations in four different styles (colour splits) allowing the choice of not just the colour scheme but the mood of the interior – from very elegant to sporty
- Specially developed, flat-cut and leather-bound carpet. Choice of 21 colours to match interior hide
  - Set of four carpet overmats to match cabin carpet, leather-bound and with polished stainless steel fixings
- Choice of 22 seat belt colours with buckles colour-matched to interior hides
- Veneer to fascia, continuous 'ring of wood' waistrails, centre console, rear centre armrest, and front and rear roof consoles in Burr Walnut, Dark Fiddleback Eucalyptus, Dark-Stained Burr Walnut or Piano Black. Eight further veneer species are available
- Bright finish interior fittings in polished stainless steel
- Unique, glass-effect switchgear
- Driver's instrument panel featuring inverted, aviation-style dials for vehicle and engine speed; supplementary colour screen displaying a driver-configurable choice of navigation prompts, compass, infotainment, vehicle or trip information
- Minor gauges panel in centre fascia with fuel gauge, analogue clock with 'Bentley Motors' inscription and coolant temperature gauge
- Boot trimmed in leather and carpeted to match interior cabin with polished stainless steel sill plate

#### COMFORT & CONVENIENCE

- Shade band to tinted windscreen
- Tinted glass sunroof to front compartment with powered Alcantara roller blind\*
- Front seats with 14-way electrical adjustment, including lumbar support, two memory positions, easy entry/exit function and adjustable heating
  - Front passenger seat – full adjustment from rear cabin. Controls housed in rear centre armrest
  - Two-plus-one rear seat configuration with eight-way electrical adjustment to outboard seats, including lumbar support, two memory positions and adjustable heating
- Four-zone air conditioning including additional rear cabin air conditioning unit with front and rear controls for fan speed and temperature
- Traditional, polished stainless steel bulls-eye air vents and organ stop controls
- Four-spoke, hide-trimmed, multi-function steering wheel with electric adjustment for tilt and reach with two memory positions, easy entry function and paddleshift
- Ambient interior mood lighting
- Twin front centre armrests with hide-lined storage and cordless telephone handset\*
- Electrical height adjustment for front seat belts with two memory positions
- Cruise control
- Rear view camera
- Blind spot assist
- Electrochromatic auto-dimming interior rear-view mirror with on/off button
- Remote-controlled three-button garage door opener integrated in roof console\*
- Rain-sensing windscreen wipers
- Sentinel headlamp functions
- Folding rear centre armrest console with controls for seating and air conditioning and leather-lined stowage compartment with two USB charging sockets
- Twin rear door armrest stowage pockets
- Smart Remote app for Apple or Android devices (free download) for rear-seat control of main infotainment system including navigation

- 'My Bentley' app for Apple or Android devices (free download) enabling remote uploading of navigation destinations and other time-saving features
- Power windows with one-touch operation and anti-trap protection
- Acoustic glazing with infrared reflective interlayer (except front screen to allow use of mobile communications and toll readers)
- Electrically-operated privacy blinds for rear windows and rear screen, controlled from front or rear cabin with one-shot operation and anti-trap
- Twin adjustable front cupholders
- Twin handcrafted rear cupholders with dedicated stowage
- Front and rear cabin cigar lighters and solid metal ashcans in rear doors
- Hide-lined glove box with illumination, USB socket and 12V power socket
- Leather-bound owner's handbook housed in dedicated stowage shelf within glove box
- Document stowage compartments to front seatbacks



## The Mulsanne

### STANDARD SPECIFICATION

#### INFOTAINMENT

- 8" high-resolution colour touch-screen to display infotainment and vehicle systems information. Supports Apple CarPlay
- Central Multi Media Interface (MMI) rotary controller with convenience keys for instant access to main system menus of: navigation, telephone, radio, media (including TV when fitted), tone, information and car systems
- 60GB hard drive unit fitted in glove box with 20GB of personal storage space, single slot DVD drive, two SD card readers and SIM card reader. Includes inbuilt Gracenote database that displays artist/album/song names from CDs
- Six disc DVD changer fitted in glove box
- Voice control for all major systems and operations
- Satellite navigation system integrated in vehicle's hard disc, ensuring fast route calculation. Configurable maps, including Google Maps and Street View.\* Seven-digit postcode destination entry, active traffic information\*
- Mulsanne audio system with 14 speakers, two subwoofers, powered through six channels, with digital sound processing
  - Extensive digital media compatibility
- Digital radio (DAB) or satellite radio (SDARS) depending on market
- Unique, hide-lined media drawer, with USB port, for out-of-sight storage, connection and charging of multimedia devices
- USB port to glove box, for out-of-sight connection and charging of larger multimedia devices
- 4G telephone system with Bluetooth wireless connectivity
- WiFi Hotspot, integrated in main unit, allowing connection of up to eight devices simultaneously

#### SAFETY, SECURITY & CHARGING

- Intelligent driver's airbag and front passenger airbag with deactivation facility
- Curtain airbags fitted to cantrails
- Three-point seat belts to front seats with electric height adjustment and memory function, pyrotechnic pre-tensioners and force limiters
- Three-point seat belts to outer and centre rear seats with pyrotechnic pre-tensioners and force limiters to outer seats\*
- Rear seat ISOFIX child seat fixings with top tether points
- Direct tyre pressure monitoring system with provision for speed-related warning
- Vehicle immobiliser and interior volumetric alarm system
- Battery conditioner with magnetic trickle charging point concealed in rear registration plate recess
- 12V power sockets located in glove box, rear centre armrest and boot in addition to cigar lighter sockets in front and rear cabin
- Two USB ports for charging in rear armrest (or console where fitted)

### OPTIONAL SPECIFICATION

#### WHEELS & TYRES

- 21" Classic alloy wheel – painted
- 21" Classic alloy wheel – polished
- 21" Radiance alloy wheel by Mulliner – painted
- 21" Radiance alloy wheel by Mulliner – polished
- Space-saving spare wheel\*

#### EXTERIOR FITTINGS

- Flying 'B' radiator mascot
- Chromed radiator shell with bright stainless steel vertical vanes matrix grille
- Bright stainless steel door pillar finisher
- Jewel fuel filler cap
- Without front licence plate bracket

#### GLASS & ROOF

- Privacy glass to rear screen and rear side windows\*
- Glass sunroof to front compartment\*

#### VENEERS

- Birds Eye Maple, Chestnut, Dark Fiddleback Eucalyptus, Dark Stained Burr Walnut, Dark Stained Madrona, Dark Stained Vavona, Liquid Amber, Olive Ash, Piano Black, Tamo Ash and Vavona

#### WOODWORK & INLAYS

- Bentley wing badge and chrome inlay strip to waistrails (not compatible with Carbon Fibre inserts)
- Contemporary style cross-banding and inlay to fascia and waistrails (only available with Burr Walnut)
- Picture frame-style inlay to waistrails (not available with Piano Black)
- Rear quarter vanity mirrors with veneer surround
- Veneer door panels
- Veneered media drawer and minor gauges panel
- Veneered picnic tables (must be selected with Bentley Theatre)
- Veneered picnic tables with contemporary cross-banding and inlay

#### SEATING

- Contrast stitching
- Cross-stitching
- Seat piping
- Seat ventilation and massage function to front and rear seats
- Comfort headrests

#### STEERING WHEELS & DRIVER CONTROLS

- Duo-tone hide trimmed steering wheel (four-spoke)
- Single-tone hide trimmed steering wheel (four-spoke)
- Heated single-tone hide trimmed steering wheel (four-spoke)
- Veneered gear lever (not available with Dark Fiddleback Eucalyptus, Dark Stained Madrona or Liquid Amber veneers)
- Veneered-rim steering wheel (four-spoke) (available with Birds Eye Maple, Burr Walnut, Chestnut, Dark Stained Burr Walnut, Piano Black and Tamo Ash veneers)

#### MATS & RUGS

- Deep-pile Wilton carpet mats to front and rear (in lieu of standard overmats)
- Lambswool rugs for front and rear (in addition to standard overmats)

#### AUDIO & TECHNOLOGY

- Twin electrically-deployed picnic tables with concealed iPad holders, integrated charging and dedicated space for Apple wireless keyboards
- Naim for Bentley premium audio system
- Bentley Theatre rear seat entertainment with twin 10.4" electrically-deployed tablets
- Digital TV tuner\*
- Corner view camera
- Adaptive cruise control

#### CONVENIENCE

- Additional handbook in alternative language\*
- Frosted glass, refrigerated bottle cooler with bespoke crystal champagne flutes
- Frosted glass, refrigerated bottle cooler with bespoke crystal tumblers
- Illuminated cocktail cabinet with bespoke crystal decanters and tumblers – by Mulliner
- Curtains to rear cabin, available in black or ivory
- First aid kit in addition to warning triangle\*
- Two or four city umbrellas
- Remote-controlled garage door opener\*
- Side-view camera (only available with rear-view camera)
- Bentley GPS tracking system preparation or full fitment (in addition to standard alarm system)
- Twin illuminated fold down vanity mirrors
- Valet key

#### MULLINER CATALOGUE

- Personalised embroidery to headrests
- Personalised treadplate plaques
- Hidden delights

#### BENTLEY RECOMMENDED SPECIFICATIONS

NB – All recommended specifications complement each other and can be ordered together

#### MULLINER DRIVING SPECIFICATION

- 21" Radiance alloy wheel by Mulliner
- Diamond quilted seats, doors and rear quarter inserts
- Indented headlining
- Knurled finish to organ stops
- Knurled sports gear lever
- Coined finish to interior door handles
- 'Handcrafted by Bentley Mulliner' vertical treadplates
- Drilled alloy sports foot pedals
- Sports tuned suspension and steering

#### PREMIER SPECIFICATION

- Bright stainless steel door pillar finisher
- Flying 'B' radiator mascot
- Jewel fuel filler cap
- Remote-controlled garage door opener\*
- Two city umbrellas
- Valet key
- Veneered media drawer and minor gauges panel

#### ENTERTAINMENT SPECIFICATION

- Naim for Bentley premium audio system
- Bentley Theatre – rear seat entertainment with twin 10.4" electrically-deployed tablets

#### COMFORT SPECIFICATION

- Seat ventilation and massage function to front and rear seats
- Two rear headrests with adjustable wings
- Super-soft Alcantara headrest cushions
- Twin loose comfort bolsters

\*Regional applicability. Certain options and specifications may appear as standard or may not be available. Please contact your Bentley retailer for more information.



## The Mulsanne Speed

### STANDARD SPECIFICATION

(in addition to Mulsanne Standard Specification)

#### WHEELS & TYRES

- 21" Mulsanne Speed wheels – painted, with 265 x 40 x 105Y tyres

#### BODY & EXTERIOR

- Painted radiator shell with bright stainless steel vertical vanes, dark tint stainless steel matrix grille and 2D Bentley winged 'B' badge
- Dark tint stainless steel matrix grilles to lower bumper apertures and wing vents
- Solid stainless steel 'Speed' badge fitted to front wing lower brightware
- Polished stainless steel 'Mulsanne' and 'Speed' treadplates
- Rifled exhaust tailpipes
- Full LED dark tint headlamps with four auto AFS modes, LED halo for supplementary main beam, light sensing auto operation, daytime running light signature and concealed washer jets
- Flying 'B' style, dark tint LED rear light clusters and discreet high-level stop lamp to rear screen

#### INTERIOR

- 24 standard colours in single-tone or duo-tone combinations in five different styles (including the new exclusive colour split for Speed) allowing the choice of not just the colour scheme but the mood of the interior – from very elegant to sporty
- Diamond quilted door panels and Speed style seats
- Embroidered Bentley emblems to all seats
- Contrast stitching
- Indented hide headlining
- Coined finish to interior door handles
- Knurled finish to organ stops
- Knurled sports gear lever
- Drilled alloy sports foot pedals

### OPTIONAL SPECIFICATION

(in addition to Mulsanne Optional Specification)

#### WHEELS & TYRES

- 21" Mulsanne Speed alloy wheel – polished
- 21" Mulsanne Speed alloy wheel – dark tint with bright machined accents

#### EXTERIOR FITTINGS

- Carbon ceramic brakes with black painted callipers
- Chromed radiator shell with bright stainless steel vertical vanes and dark tint matrix grille

#### WOODWORK & INLAYS

- Piano Black with Carbon Fibre waistrail inlays (only available when Piano Black is selected. Not available with any other inlays or marquetry options)

#### MULSANNE SPEED PREMIER SPECIFICATION

- 21" Mulsanne Speed wheel in dark tint or polished finish
- Flying 'B' radiator mascot
- Jewel fuel filler cap
- Remote-controlled garage door opener\*
- Two city umbrellas
- Valet key
- Veneered media drawer and minor gauges panel

## The Mulsanne Extended Wheelbase

### STANDARD SPECIFICATION

(in addition to Mulsanne Standard Specification)

#### BODY & EXTERIOR

- Wheelbase extended by 250 mm

#### INTERIOR

- Two plus two seating configuration
- Veneered door panels
- Tinted glass sunroof to rear compartment with powered Alcantara roller blind
- Electrically operated curtains for rear windows and rear screen, controlled from front or rear cabin with one-shot operation
- Head and thorax airbags fitted to front and rear seats (curtain airbags not fitted)

### OPTIONAL SPECIFICATION

(in addition to Mulsanne Optional Specification)

#### INTERIOR

- Twin airline-style reclining seats (includes comfort headrests)
- Full length console with twin deployable picnic tables and enhanced stowage

#### MULLINER SPECIFICATION

- 21" Radiance alloy wheel by Mulliner
- Diamond quilted seats, doors and rear quarter inserts
- Indented headlining
- Knurled finish to organ stops
- Coined finish to interior door handles
- 'Handcrafted by Bentley Mulliner' vertical treadplates
- Rear quarter vanity mirrors with veneer surround
- Lambswool rugs to front and rear (in addition to standard overmats)

#### COMFORT SPECIFICATION

- Twin airline-style reclining seats to rear cabin
- Seat ventilation and massage function to front and rear seats
- Two rear headrests with adjustable wings
- Super-soft Alcantara headrest cushions
- Twin loose comfort bolsters





## MULSANNE

Engine: 6¾ litre twin-turbocharged V8 cam phasing and variable displacement

Max Power: 512 PS / 505 bhp / 377 kW @ 4,000 rpm

Max Torque: 1,020 Nm / 752 lb.ft @ 1,750 rpm

Emission Controls: EU6 and LEVII emissions compliant

Transmission: 8-speed automatic transmission with electronic shift interface, sport mode and steering wheel mounted paddleshift

Driveline: Rear wheel drive

Top Speed: 184 mph / 296 km/h

0-60 mph / 0-100 km/h: 5.1 seconds / 5.3 seconds

0-100 mph / 0-160 km/h: 11.6 seconds / 11.5 seconds

Wheelbase: 3,266 mm / 10 ft 8 in

Overall length: 5,575 mm / 18 ft 3 in

Width (across mirrors): 2,208 mm / 7 ft 3 in

Width with mirrors folded: 1,926 mm / 6 ft 4 in

Overall height: 1,521 mm / 5 ft

Unladen weight (Markets outside North America): 2,685 kg / 5,919 lb

Unladen weight (North America): 2,711 kg / 5,977 lb

Gross weight: 3,200 kg / 7,055 lb

Fuel tank: 96 litres / 21.12 gallons / 25.36 US gallons

Boot volume: 443 litres / 15.75 cu ft

Drag: 0.33 Cd

### Fuel consumption (EU cycle)

Urban: 12.1 mpg / 23.4 l/100 km

Extra-Urban: 28.0 mpg / 10.1 l/100 km

Combined: 18.8 mpg / 15.0 l/100 km

CO<sub>2</sub> Emissions: 342 g/km

### Fuel consumption (EPA cycle)

City Driving (US): 11 US mpg

Highway Driving (US): 18 US mpg

Combined (US): 13 US mpg



## MULSANNE SPEED

Engine: 6¾ litre twin-turbocharged V8 cam phasing and variable displacement

Max Power: 537 PS / 530 bhp / 395 kW @ 4,000 rpm

Max Torque: 1,100 Nm / 811 lb.ft @ 1,750 rpm

Emission Controls: EU6 and LEVII emissions compliant

Transmission: 8-speed automatic transmission with electronic shift interface, sport mode and steering wheel mounted paddleshift

Driveline: Rear wheel drive

Top Speed: 190 mph / 305 km/h

0-60 mph / 0-100 km/h: 4.8 seconds / 4.9 seconds

0-100 mph / 0-160 km/h: 11.1 seconds / 11.0 seconds

Wheelbase: 3,266 mm / 10 ft 8 in

Overall length: 5,575 mm / 18 ft 3 in

Width (across mirrors): 2,208 mm / 7 ft 3 in

Width with mirrors folded: 1,926 mm / 6 ft 4 in

Overall height: 1,521 mm / 5 ft

Unladen weight (Markets outside North America): 2,685 kg / 5,919 lb

Unladen weight (North America): 2,711 kg / 5,977 lb

Gross weight: 3,200 kg / 7,055 lb

Fuel tank: 96 litres / 21.12 gallons / 25.36 US gallons

Boot volume: 443 litres / 15.75 cu ft

Drag: 0.33 Cd

### Fuel consumption (EU cycle)

Urban: 12.1 mpg / 23.4 l/100 km

Extra-Urban: 28.0 mpg / 10.1 l/100 km

Combined: 18.8 mpg / 15.0 l/100 km

CO<sub>2</sub> Emissions: 342 g/km

### Fuel consumption (EPA cycle)

City Driving (US): 11 US mpg

Highway Driving (US): 18 US mpg

Combined (US): 13 US mpg



## MULSANNE EXTENDED WHEELBASE

Engine: 6¾ litre twin-turbocharged V8 cam phasing and variable displacement

Max Power: 512 PS / 505 bhp / 377 kW @ 4,000 rpm

Max Torque: 1,020 Nm / 752 lb.ft @ 1,750 rpm

Emission Controls: EU6 and LEVII emissions compliant

Transmission: 8-speed automatic transmission with electronic shift interface, sport mode and steering wheel mounted paddleshift

Driveline: Rear wheel drive

Top Speed: 184 mph / 296 km/h

0-60 mph / 0-100 km/h: 5.3 seconds / 5.5 seconds

0-100 mph / 0-160 km/h: 11.8 seconds / 11.8 seconds

Wheelbase: 3,516 mm / 11 ft 5 in

Overall length: 5,825 mm / 19 ft 1 in

Width (across mirrors): 2,208 mm / 7 ft 3 in

Width with mirrors folded: 1,926 mm / 6 ft 4 in

Overall height: 1,541 mm / 5 ft 1 in

Unladen weight (Markets outside North America): 2,730 kg / 6,019 lb

Unladen weight (North America): 2,751 kg / 6,064 lb

Gross weight: 3,200 kg / 7,055 lb

Fuel tank: 96 litres / 21.12 gallons / 25.36 US gallons

Boot volume: 443 litres / 15.75 cu ft

Drag: 0.33 Cd

### Fuel consumption (EU cycle)

Urban: 12.1 mpg / 23.4 l/100 km

Extra-Urban: 28.0 mpg / 10.1 l/100 km

Combined: 18.8 mpg / 15.0 l/100 km

CO<sub>2</sub> Emissions: 344 g/km

### Fuel consumption (EPA cycle)

City Driving (US): 11 US mpg

Highway Driving (US): 18 US mpg

Combined (US): 13 US mpg







